

TOMAHAWK 3.0

Gas Griller

10033510



COOKINGCO
OOKINGCOO
KINGCOOKIN
INGCOOKING
COOKINGCO
OOKINGCOO
KINGCOOKIN
INGCOOKING

KLARSTEIN

www.klarstein.com

CE 2531-20

Dear Customer,

Congratulations on purchasing this device. Please read the following instructions carefully and follow them to prevent possible damages. We assume no liability for damage caused by disregard of the instructions and improper use. Scan the QR code to get access to the latest user manual and more product information.



CONTENTS

Technical Data	4
Safety Instructions	5
Overview	6
Installation	7
Connection to Appliance	11
Checking for Leaks	12
Lighting Instructions for Barbecue	13
Cleaning and Care	14
Troubleshooting	15
Disposal Considerations	16
Manufacturer & Importer (UK)	16

TECHNICAL DATA

Item number	10033510			
Total heat input	9.6 kW (699 g/h)			
Burners heat input	3.2 kW (233 g/h) x 3			
Gas category	I3 + (28-30/37) <input checked="" type="checkbox"/>		I3B/P (30) <input type="checkbox"/>	I3B/P (50) <input type="checkbox"/>
Types of gas	Butane (G30)	Propane (G31)	Butane, propane or their mixtures	
Gas pressure	28-30 mbar	37 mbar	28-30 mbar	50 mbar
Grill burner injection size	0.85 mm	0.8 mm	0.85 mm	0.75 mm
Side burner injector size	0.85 mm	0.8 mm	0.85 mm	0.75 mm
I3 + (28-30/37)	BE, FR, IT, LU, IE, GB, GR, PT, ES, CY, CZ, LT, SK, CH, SI, LV			
I3B/P (30)	LU, NL, DK, FI, SE, CY, CZ, LT, MT, SK, SI, BG, IS, NO, TR, HR, RO, IT, HU, LV			
I3B/P(37)	PL			
I3B/P (50)	AT, DE, CH, LU, SK			
Identification number	2531CS-0055			
Important Notes	<ul style="list-style-type: none">• WARNING: accessible parts may be very hot. Keep young children away.• Read the instructions before using the appliance.• Use the appliance in well-ventilated areas.• Any modifications of the appliance may be dangerous.• Turn off the gas supply at the gas cylinder after use.			

Chal-Tec GmbH
Wallstraße 16
10179 Berlin
Germany



SAFETY INSTRUCTIONS

- FOR OUTDOOR USE ONLY.
- PLEASE READ INSTRUCTIONS CAREFULLY BEFORE ASSEMBLY.
- RETAIN THIS MANUAL FOR FUTURE REFERENCE.



WARNING: Danger of hazardous fire or explosion

Follow the instructions.

- Read the instructions before using the appliance.
- Retain this manual for future reference.
- Use outdoors only.
- Warning: accessible parts may be very hot. Keep young children away.
- Do not move the appliance during use.
- Turn off the gas supply at the gas cylinder after use.
- Do not modify the appliance.
- This appliance must be kept away from flammable materials during use.
- The regulator and hose must be connected correctly to the appliance. A spanner must be used to tighten the nut onto the connection thread.
- Do not keep any gas cylinder inside the barbecue trolley when it is in use. It is forbidden to insert / put gas cylinder into the appliance.

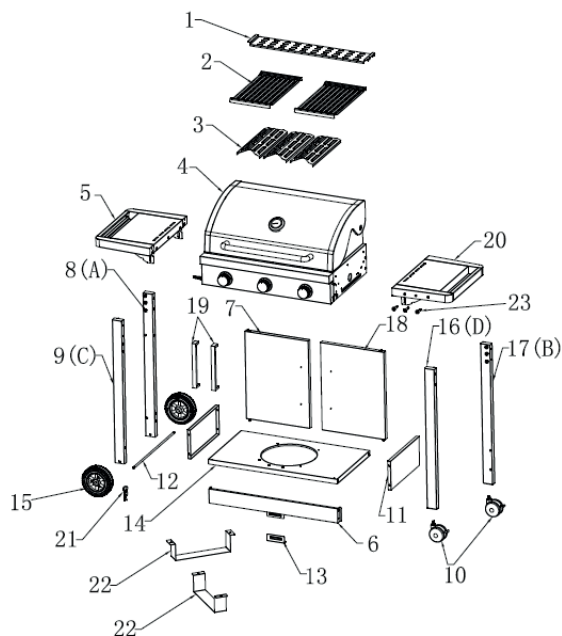
For your safety if, you smell gas:

1. Turn off gas supply at gas cylinder.
2. Extinguish all naked flames; do not operate any electrical appliances.
3. Ventilate the area.
4. Check for leaks as detailed in this manual.
5. If odour persists, contact your dealer or gas supplier immediately.

Precautions

1. Leak test all connections after each cylinder refill or before each use.
 2. Never check for leaks with a match or open flame.
 3. Do not store or use gasoline or other flammable vapours and liquids in the vicinity of this or any other appliance.
 4. Any LP cylinder not connected for use shall not be stored in the vicinity of this or any other appliance.
- The ventilation openings of the cylinder compartment must absolutely never be obstructed.
 - Always take precautions when changing the gas cylinder by carrying out the change away from any source of ignition.

OVERVIEW



- | | | | |
|----|-------------------------------|----|--------------------------------|
| 1 | Warming plate (1 pc) | 13 | Magnet (1 pc) |
| 2 | Cooking grill (2 pcs) | 14 | Trolley bottom panel (1 pc) |
| 3 | Flame tamer (3 pcs) | 15 | 6 inch plastic wheel (2 pcs) |
| 4 | Body (1 pc) | 16 | Trolley right front leg (1 pc) |
| 5 | Left side table (1 pcs) | 17 | Trolley right back leg (1 pc) |
| 6 | Beam (1 pc) | 18 | Right door (1 pc) |
| 7 | Left door (1 pc) | 19 | Door handle (2 pcs) |
| 8 | Trolley left back leg (1 pc) | 20 | Right side table (1 pc) |
| 9 | Trolley left front leg (1 pc) | 21 | Split pin (2 pcs) |
| 10 | Small wheel (2 pcs) | 22 | Tank shelf (1 pc) |
| 11 | Trolley side panel (2 pcs) | 23 | Step peg (3 pcs) |
| 12 | Wheel axle (1 pc) | | |

INSTALLATION

WARNING: Whilst every effort has made in manufacture of your barbecue to remove any sharp edges, you should handle all components with care in order to avoid accidental injury.

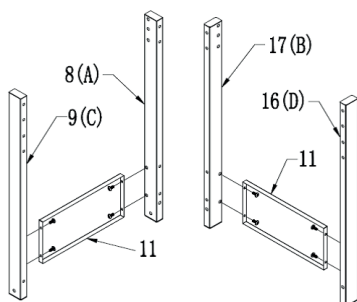
Tools required: Either a Phillips screwdriver or flat-bladed screwdriver and either a spanner (we have supplied a multifunction spanner) or a pair of pliers.

ASSEMBLY:

Please read all instructions thoroughly before proceeding. Find a large, clean area in which to assemble your trolley barbecue. Please refer to the parts list and assembly diagram as necessary. Assembly of the barbecue involves many large components, it is advisable to have two people assemble the unit.

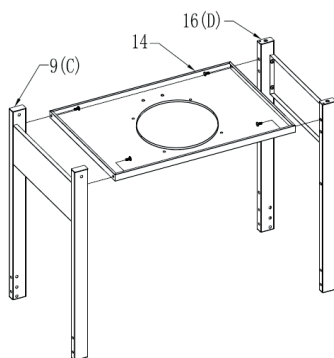
NOTICE: Make sure all the plastic protection is removed before assembling!

1



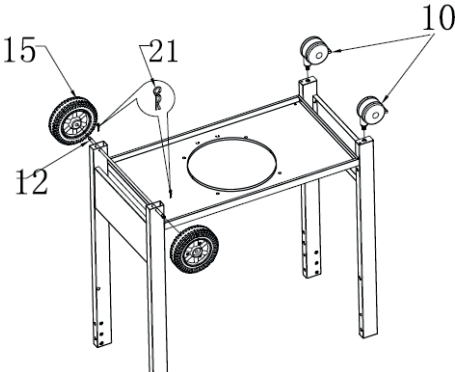
M6*10 ➡ 8 PCS

2

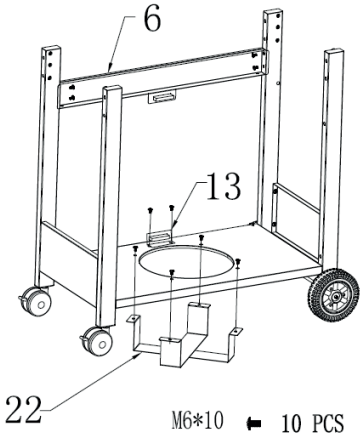


M6*10 ➡ 4 PCS

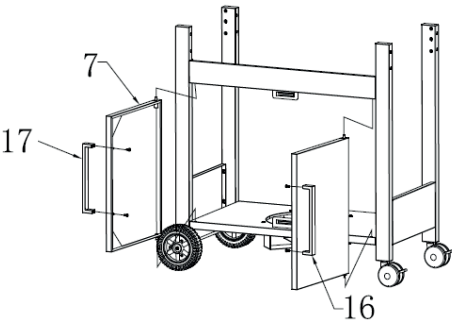
3



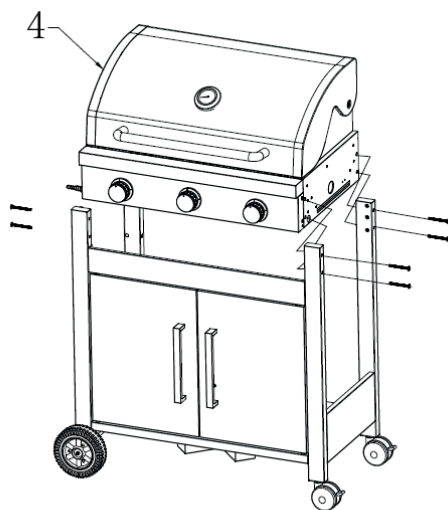
4



5

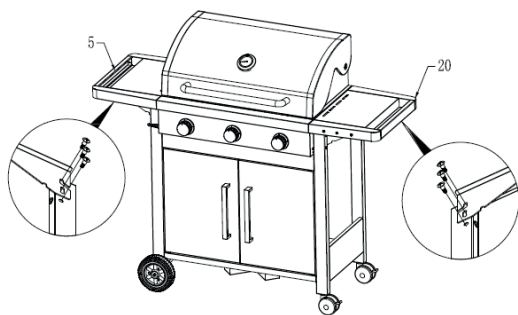


6



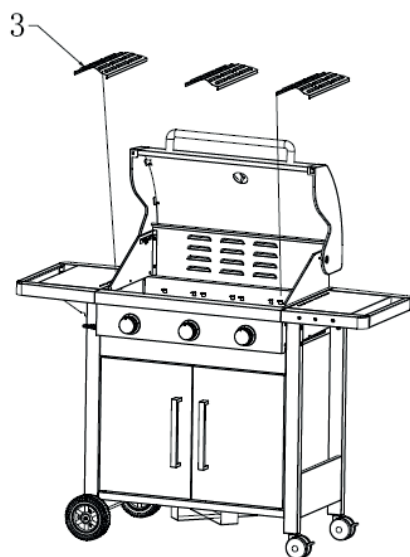
M6*65 ← 8pcs

7

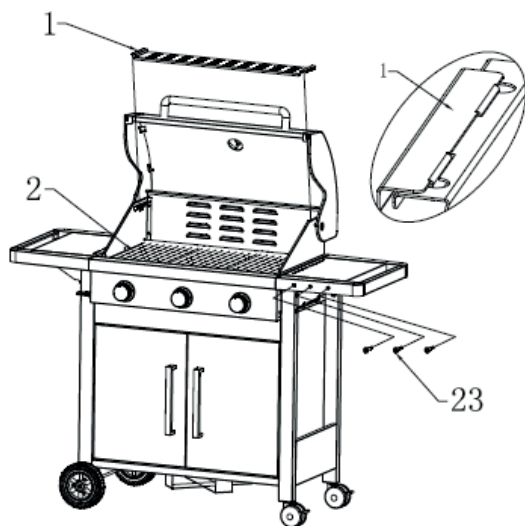


M6 → 12pcs

8



9



CONNECTION TO APPLIANCE

- This appliance is only suitable for use with low-pressure butane or propane gas or LPG mixtures, fitted with the appropriate low-pressure regulator via a flexible hose.
- The hose should be secured to the regulator and the appliance with hose clips. Make sure the flexible hose cannot come in contact with hot surfaces and avoid twisting.
- Use a suitable regulator that is certified to BSEN 12864 or EN 16129. Make sure the regulator and flexible hose comply with local code.

Regulator and hose

Use only regulators and hoses approved for LP Gas at the above pressures. The life expectancy of the regulator is estimated at 2 years.

The use of the wrong regulator or hose is unsafe; always check that you have the correct items before operating the barbecue.

The hose used must conform to the relevant standard for the country of use. Worn or damaged hoses must be replaced. Ensure that the hose is not obstructed, kinked, or in contact with any part of the barbecue other than at its connection.

For flexible hoses

- Avoid twisting the flexible hose when the appliance is in use. The length of the flexible hose shall not exceed 1.5 m. In Finland, the length shall not exceed 1.2 m. The hose should be certified according to the applicable EN Standard and comply with local code.

Storage of appliance

- Storage of an appliance indoors is only permissible if the cylinder is disconnected and removed from the appliance. When the appliance is not to be used for a longer period of time it should be stored in its original packaging in a dry dust-free environment.

Gas cylinder

The gas cylinder should not be dropped or handled roughly! If the appliance is not in use, the cylinder must be disconnected. Replace the protective cap on the cylinder after disconnecting the cylinder from the appliance. The gas cylinder must be located outside the body of the appliance.

Always connect or replace the cylinder in a well-ventilated area and away from any source of ignition, never in the presence of a flame, spark or heat source.

Cylinders must be stored outdoors in an upright position and out of the reach of children. The cylinder must never be stored where temperatures can reach over 50 °C. Do not store the cylinder near flames, pilot lights or other sources of ignition. DO NOT SMOKE.

This barbecue is designed for use outdoors, away from any flammable materials. It is important that there are no overhead obstructions and that there is a minimum

distance of 1 m from the side or rear of the appliance. It is important that the ventilation openings of the appliance are not obstructed. The barbecue must be used on a level, stable surface. The appliance should be protected from direct draughts and shall be positioned or protected against direct penetration by any trickling water (e.g. rain).

Make sure that the gas cylinder compartment (if any) is not obstructed, keep it ventilated and clean.

CHECKING FOR LEAKS

- Make 2-3 fluid ounces of leak-detecting solution by mixing one part washing-up liquid with 3 parts water.
- Ensure the control valve is 'OFF'.
- Connect the regulator to the cylinder and ON/OFF valve to the burner, ensure the connections are secure then turn ON the gas.
- Brush the soapy solution onto the hose and all joints. If bubbles appear you have a leak, which must be rectified before use.
- Retest after fixing the fault
- Turn OFF the gas at the cylinder after testing.
- If leakage is detected and cannot be rectified, do not attempt to cure leakage but consult your gas dealer.

LIGHTING INSTRUCTIONS FOR BARBECUE

1. Open the hood of the barbecue before attempting to light the burners.
2. Turn all the control knobs clockwise to 'OFF' position.
3. Connect the regulator to the gas bottle. Turn the gas supply 'ON' at the regulator. Check with the use of soapy water for any gas leakage between the bottle and the regulator.
4. Push down the front left control knob and keep pressing whilst turning anti-clockwise to the "HIGH" position (a clicking sound will be heard). This will light the left hand burner. Observe if the burner has lit. If not repeat this process.
5. If the burner has not lit after retrying wait 5 minutes and repeat step 4.
6. Adjust the heat by turning the knob to the High/Low position.
7. If the burner does not light, light the appliance with a match using the lighting hole in the side of the appliance. Consult your gas dealer to rectify the ignition.
8. To light the remaining burners in sequence from left to right, repeat 4 above. The cross-lighting channel between the burners will light the burner adjacent to it.
9. To turn the barbecue 'OFF' turn the cylinder valve or regulator switch to the 'OFF' position and then turn the control knob on the appliance clockwise to the 'OFF' position.

Warning: If the burner fails to ignite, turn the control knob off (clockwise) and also turn the cylinder valve off. Wait five minutes before attempting to relight with ignition sequence.

- Before cooking for the first time, operate the barbecue for about 15 minutes with the lid closed and the gas turned on LOW. This will 'heat clean' the internal parts and dissipate odour from the painted finish.
- Clean your barbecue after each use. DO NOT use abrasive or flammable cleaners, as it will damage the parts of the product and may start a fire. Clean with warm soapy water.
- WARNING: Danger of burns.
- Accessible parts may be very hot. Keep young children away from the hot appliance at all times (even while it is cooling down).
- It is recommended that protective gloves (e. g. oven gloves) be used when handling particularly hot components.

CLEANING AND CARE

**WARNING: Danger of burns**

All cleaning and maintenance should be carried out when the barbecue is cool and with the fuel supply turned OFF at the gas cylinder.

Cleaning

'Burning off' the barbecue after every use (for approx 15 minutes) will keep excessive food residue to a minimum.

Outside surface

1. Use mild detergent or baking soda and hot water solution. Non-abrasive scouring powder can be used on stubborn stains, then rinse with water.
2. If the inside surface of the barbecue lid has the appearance of peeling paint, baked-on grease build-up has turned to carbon and is flaking off. Clean thoroughly with strong hot soapy water solution.

Interior of barbecue bottom

Remove residue using brush, scraper and/or cleaning pad then wash with a soapy water solution. Rinse with water and allow to dry.

Wooden surface

Wash with a soft cloth and hot soapy water solution. Rinse with water. Do not use abrasive cleaners, degreasers or a concentrated barbecue cleaner on wooden parts.

Cooking grid

Use a mild soapy water solution. Non-abrasive scouring power can be used on stubborn stains then rinse with water.

Cleaning the burner assembly

CAUTION: All cleaning and maintenance should be carried out when the barbecue is cool and with the fuel supply turned OFF at the gas cylinder.

1. Turn the gas OFF at the control knob and disconnect the cylinder.
2. Remove cooling grate.
3. Clean the burner with a soft brush or blow clean with compressed air and wipe with a cloth.
4. Clean any clogged ports with a pipe cleaner or stiff wire (such as an opened paper clip).

TROUBLESHOOTING

Problem	Possible Cause	Solution
Burners will not light using the ignition system.	LP gas cylinder is empty	Replace with full cylinder
	Faulty regulator	Have regulator checked or replace.
	Obstructions in burner	Clean burner.
	Obstructions in gas jets or gas hose	Clean jets and gas hose.
	Electrode wire loose or disconnected on electrode or ignition unit	Reconnect wire.
	Electrode or wire is damaged. Faulty push button igniter	Change electrode and wire change igniter.
Burner will not light with a match.	LP gas cylinder is empty.	Replace with full cylinder.
	Faulty regulator.	Have regulator checked or replace .
	Obstructions in burner.	Clean burner.
	Obstructions in gas jets or gas hose	Clean jets and gas hose.
Low flame or flashback (fire in burner tube - a hissing or roaring noise may be heard)	LP gas cylinder too small	Use larger cylinder.
	Obstructions in burner	Clean burner.
	Obstructions in gas jets or gas hose .	Clean jets and gas hose.
	Windy conditions.	Use grill in a more sheltered position.

DISPOSAL CONSIDERATIONS



If there is a legal regulation for the disposal of electrical and electronic devices in your country, this symbol on the product or on the packaging indicates that this product must not be disposed of with household waste. Instead, it must be taken to a collection point for the recycling of electrical and electronic equipment. By disposing of it in accordance with the rules, you are protecting the environment and the health of your fellow human beings from negative consequences. For information about the recycling and disposal of this product, please contact your local authority or your household waste disposal service.

MANUFACTURER & IMPORTER (UK)

Manufacturer:

Chal-Tec GmbH, Wallstrasse 16, 10179 Berlin, Germany.

Importer for Great Britain:

Chal-Tec UK limited
Unit 6 Riverside Business Centre
Brighton Road
Shoreham-by-Sea
BN43 6RE
United Kingdom



KLARSTEIN