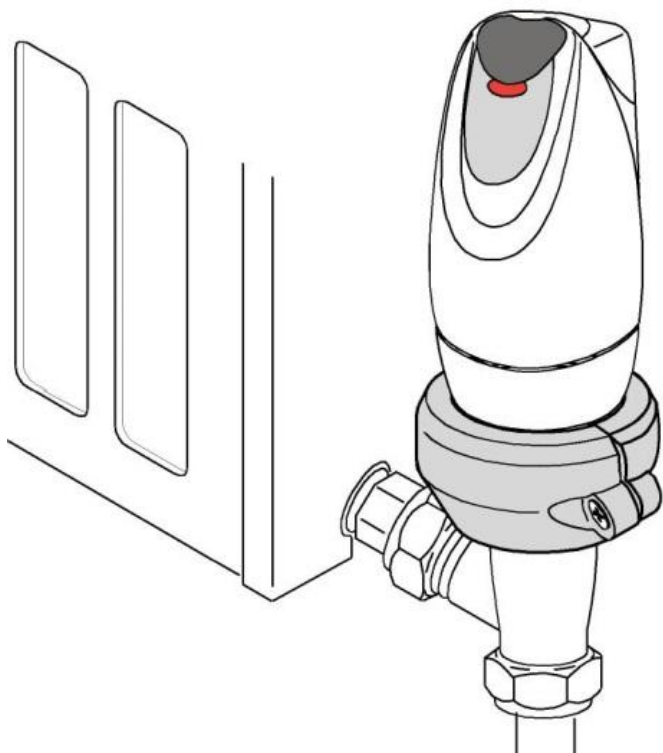


Security Thread Lock for eTRV - Installation guide



Thank you for buying the Security Thread Lock for use with the eTRV (electronic Thermostatic Radiator Valve). Please check that the Security Thread Lock is suitable for your thermostatic radiator valve or adaptor, as some valve combinations are not compatible.

Please take the time needed to read and understand these instructions. After you have read the manual, store it in a safe place.

eTRV is protected under GB Patent, number 2452043.

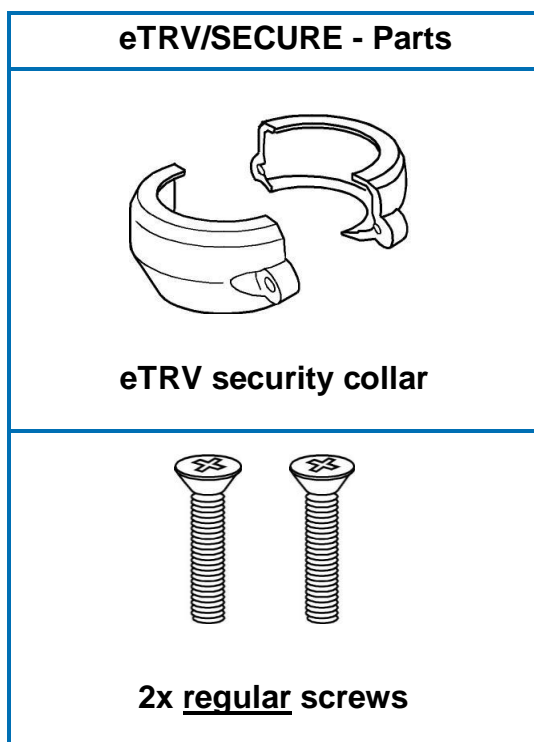
eTRV is a registered trademark.

2014/04v1

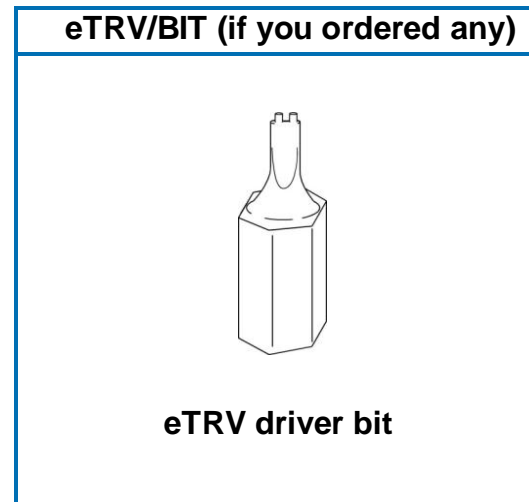
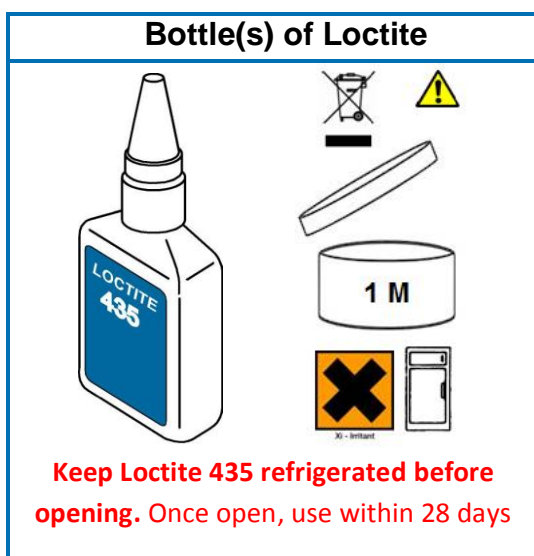
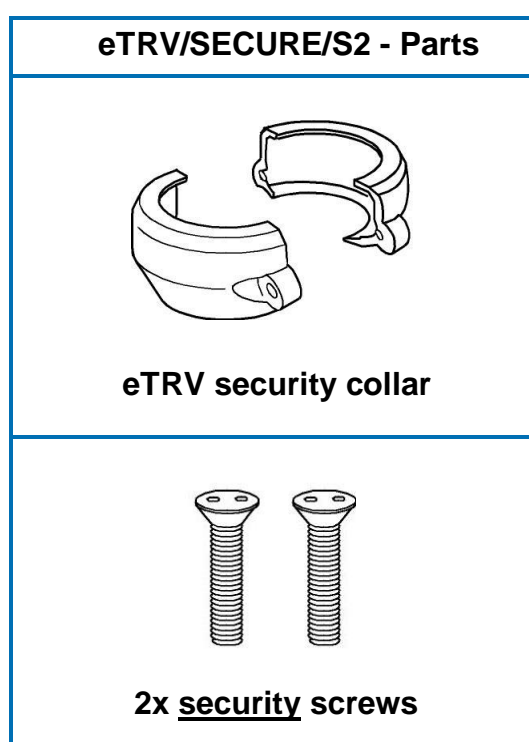
1 Introduction ▲

This manual explains how to install and remove the eTRV Security Thread Lock.

The box should contain the following items and accessories:



OR

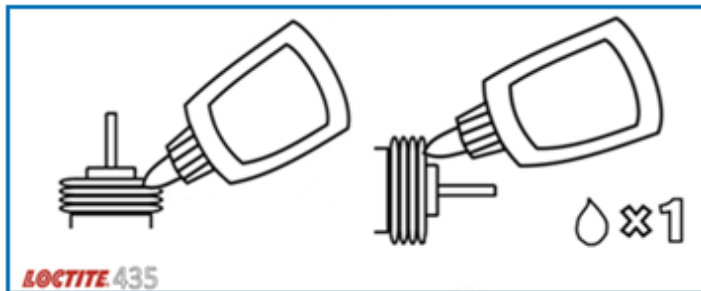


You will need: a Phillips screwdriver (one with a cross tip)

You will need: a socket screwdriver (to accept the eTRV/BIT)


2 Installation ▲

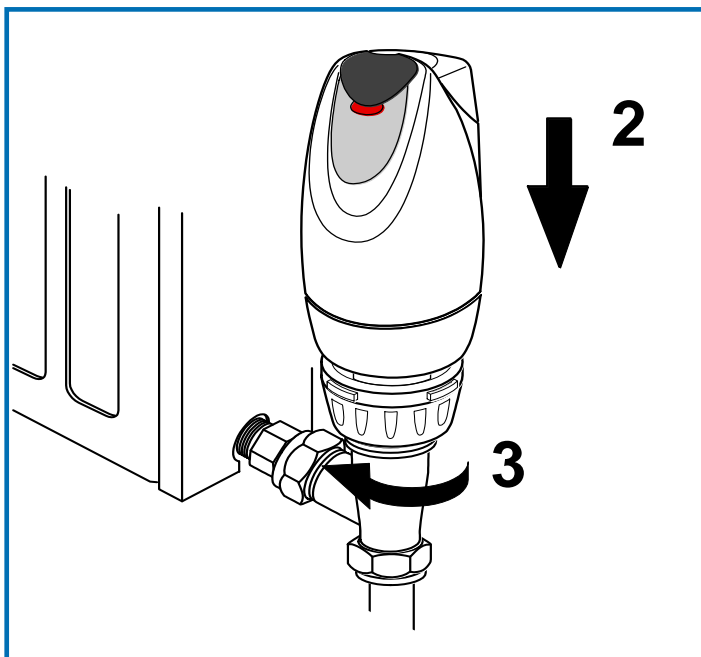
If the eTRV stem is **fully retracted**, you can safely attach the eTRV to the radiator valve. See section 5 on page 10 of the eTRV instructions. Have all parts prepared ready to fit.



Step 1

Apply only **one single drop** of Loctite 435 to the top of the thread on the TRV valve body.

Note : Observe the safety  information provided overleaf.



Step 2

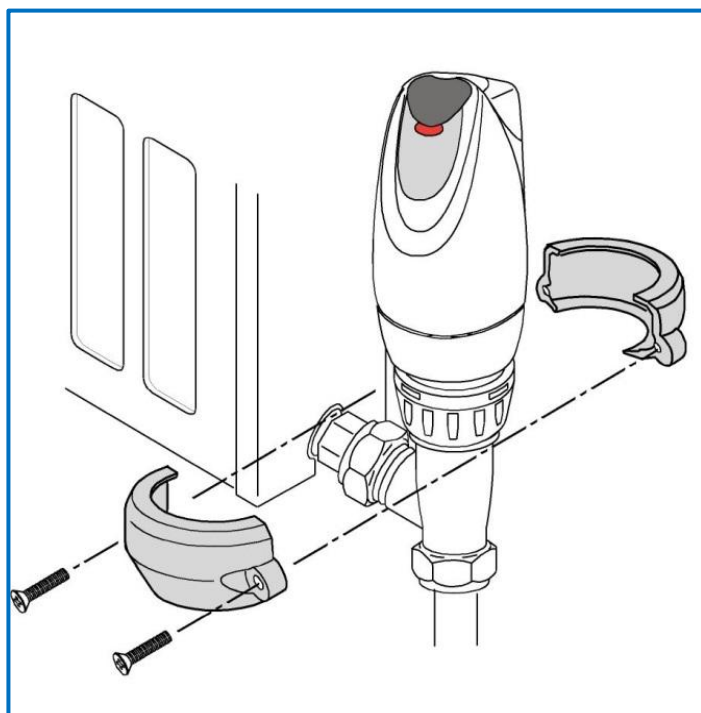
Place the eTRV on the valve.

Note : Follow steps in the eTRV instructions first so that a suitable base ring and spacer is used and ensure pegs are fitted correctly.

Step 3

Carefully screw the base ring **clockwise by hand** until it is firmly in place.

Note : It may take upto 24 hours for the Loctite 435 to cure and hold fast.



Step 4

Place the security collar around the base ring on the eTRV. There are small pegs and rebates where the half collars meet. These need to line up with each other.

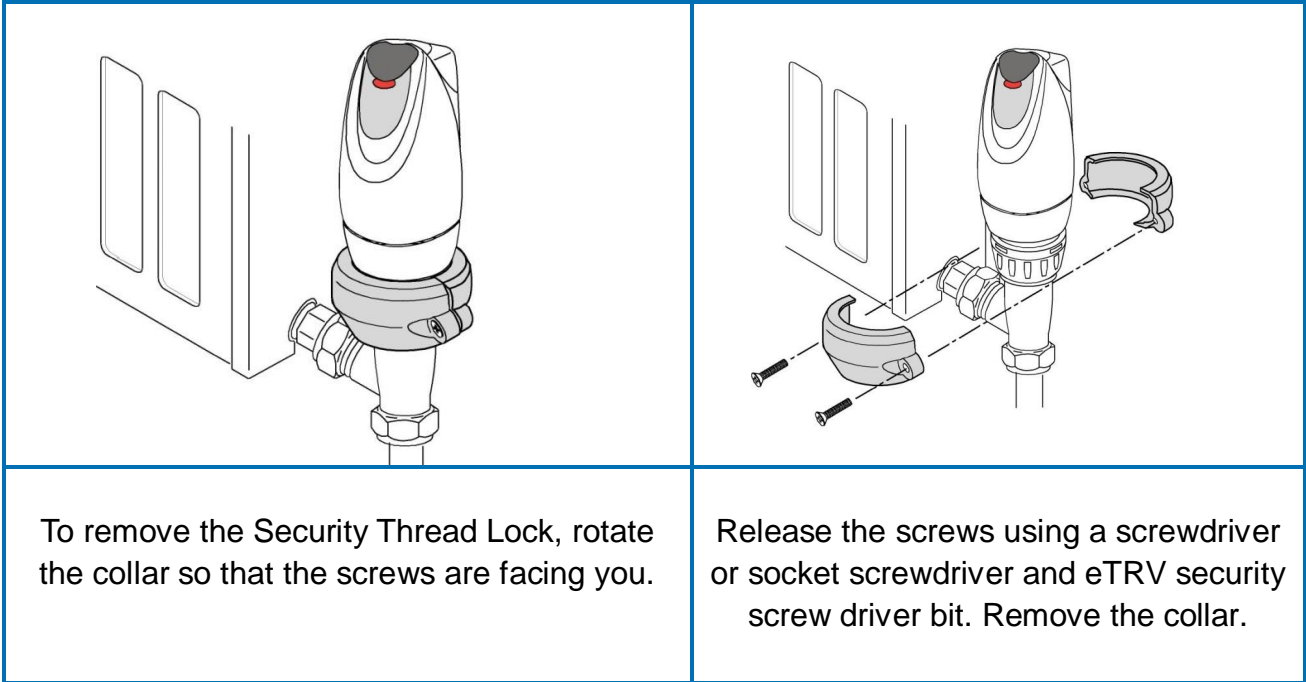
The half with the brass threaded inserts should be behind the eTRV.

The countersunk half should be in front of the eTRV.

Now fasten the screws in firmly.

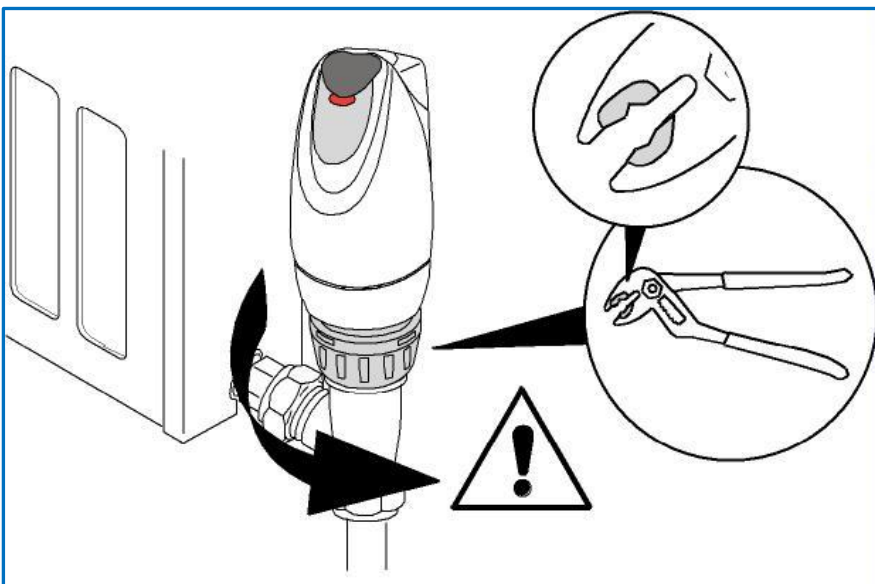
Note : Take care to hold the two halves so that they are aligned whilst tightening the screws.

3 Removal ▲



To remove the Security Thread Lock, rotate the collar so that the screws are facing you.

Release the screws using a screwdriver or socket screwdriver and eTRV security screw driver bit. Remove the collar.



To remove the eTRV, use wide jaw plumbing pliers.

Note : These ***must*** be fitted with ***soft jaw grips*** so the eTRV Base Ring and pegs aren't damaged.

Gently grip the eTRV Base Ring and turn anticlockwise to remove the eTRV from the valve.

Clean the thread of any residue if necessary.

4 ⚠️ Loctite 435 – **HAZARDOUS** – Safety information ⚠️ ▲

Keep Loctite 435 out of reach of children and unauthorised people. Dispose of waste and residues according to local authority requirements. Do not empty in drains, surface water or ground water drainage.

MAY CAUSE: See *Loctite 435 Material Safety Datasheet for further information*

SKIN IRRITATION	Avoid contact with skin. Wear suitable protective clothing and gloves. Do not pull bonded skin apart. It may be gently peeled apart with a blunt object such as a spoon, preferably after soaking in warm soapy water.
SERIOUS EYE IRRITATION	Avoid contact with eyes. Wear protective eye protection. In case of contact with eyes, rinse immediately with water and seek medical advice.
RESPIRATORY IRRITATION	Avoid breathing vapours. An approved mask or respirator fitted with an organic vapour cartridge should be worn if the product is used in a poorly ventilated area.