

GOND LONG A VISSER M16

Poids du portail : 100Kg

M16 LONG HINGE - SCREWING TYPE

Gate weight : 100 Kg

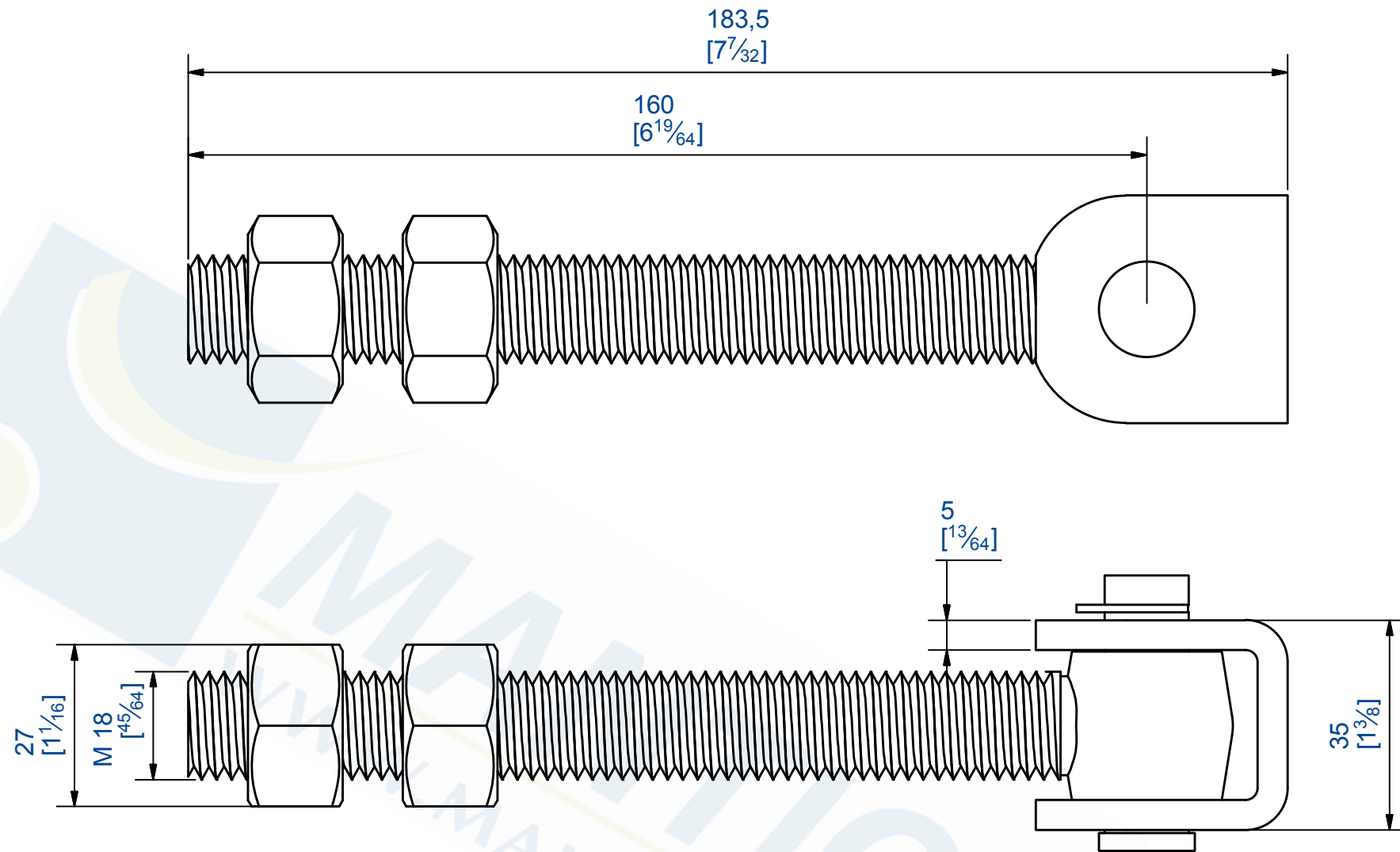


7,rue Gay Lussac  
25000 BESANCON

Référence  
Item Nr:

**25163L**

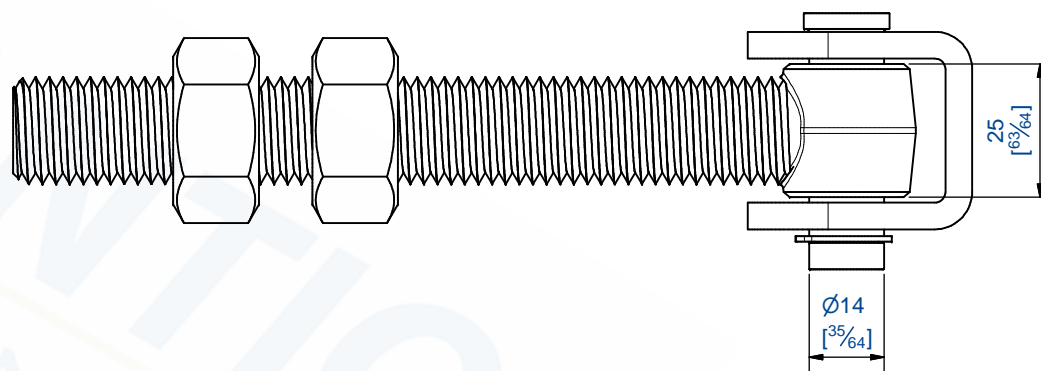
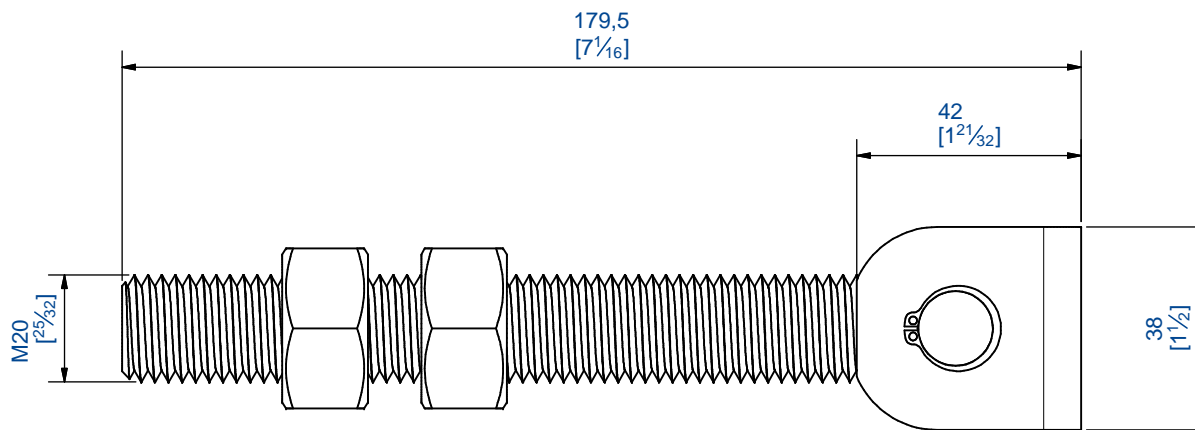
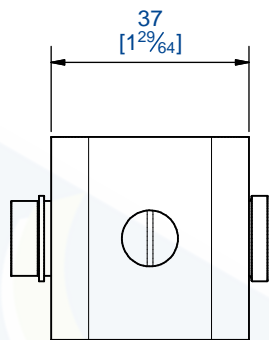
Rail associé  
Combined track:



7, rue Gay Lussac  
25000 BESANCON

Référence  
Item Nr: **25183L**

Rail associé  
Combined track:



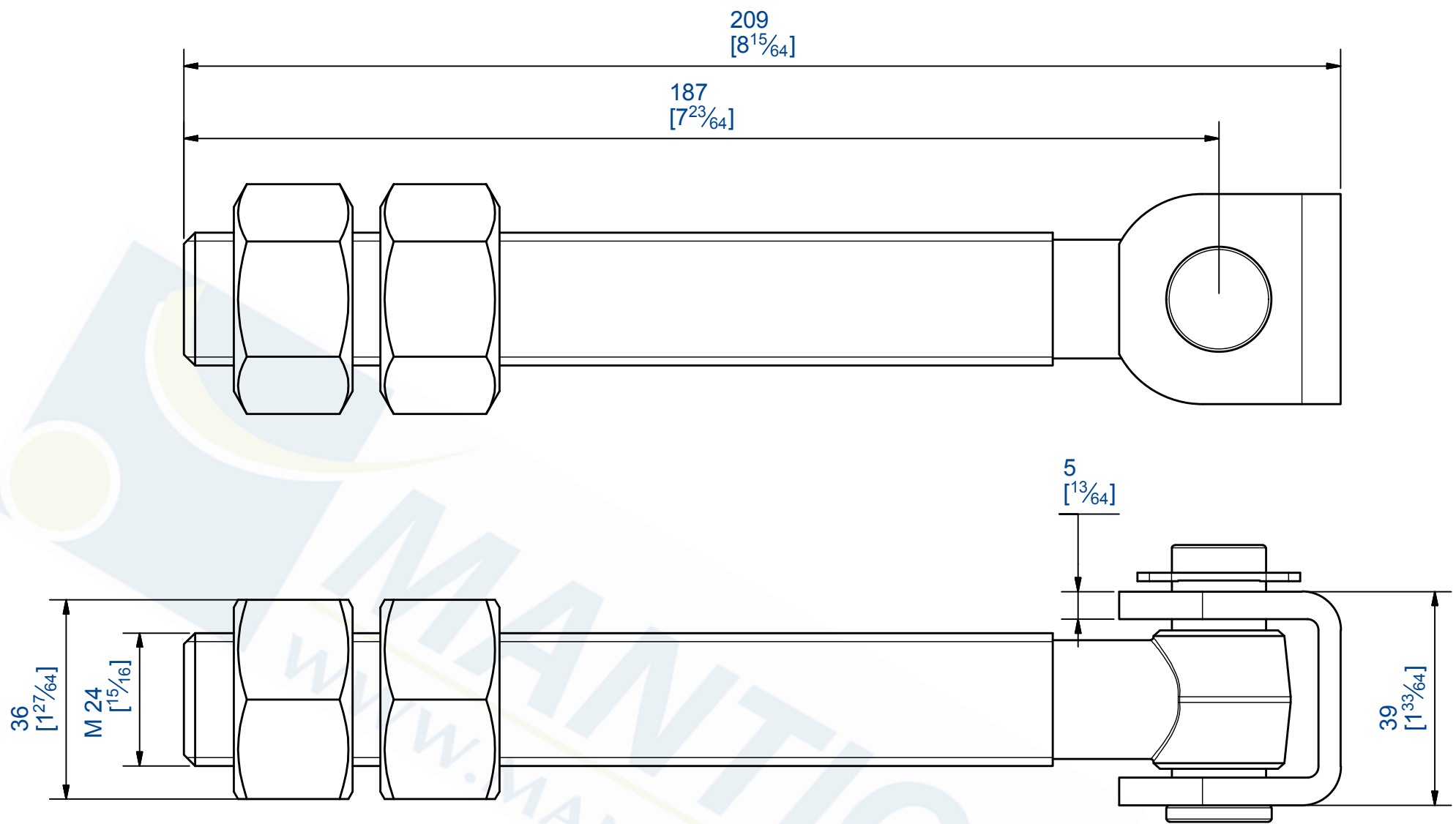
Gond à visser avec chape à visser.  
Poids du portail : 200Kg

Hinges screwing type with screwing type cap.  
Gate weight : 200 Kg

**MANTION**  
FERRURES DE PORTES COULISSANTES  
MANUFACTURING FOR MONORAIL  
7, rue Gay Lussac  
25000 BESANCON

Référence  
Item Nr: **25203L**

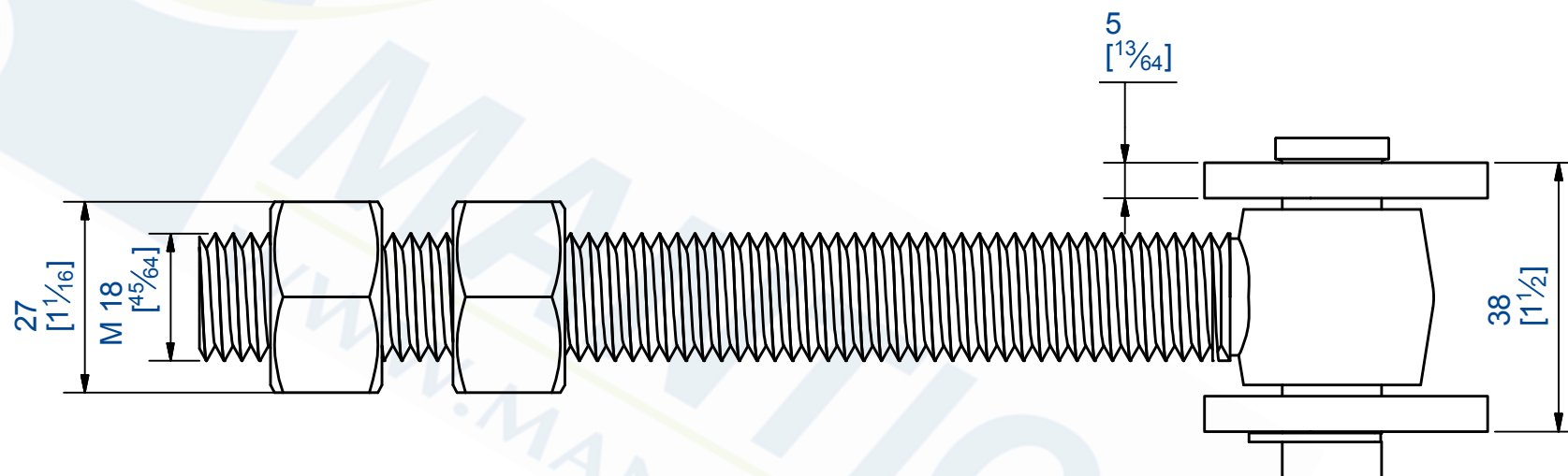
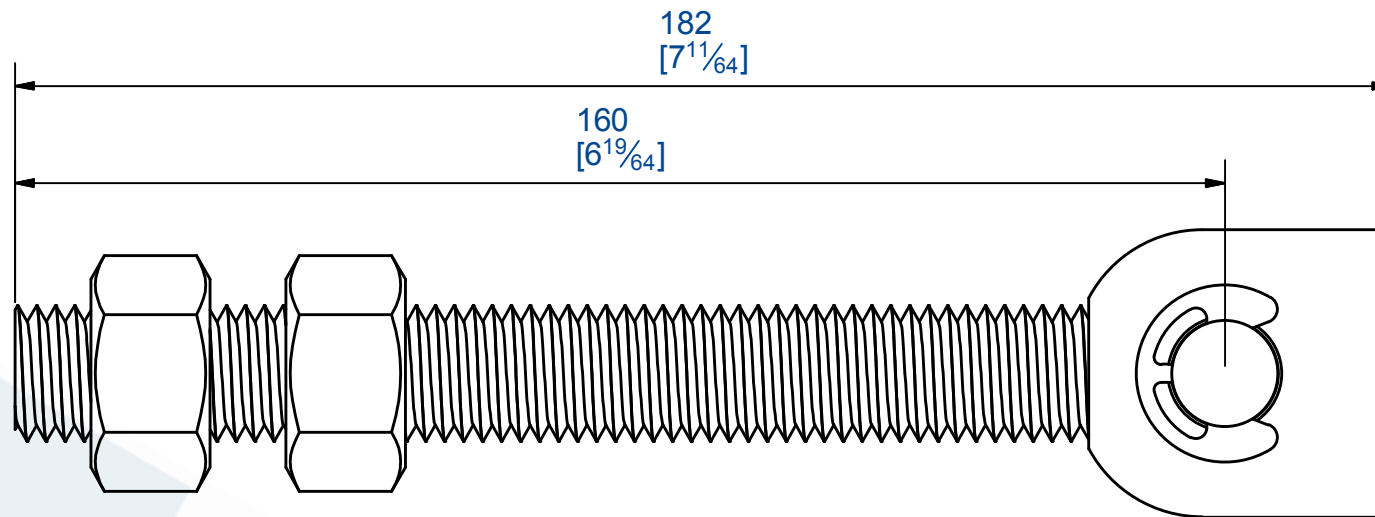
Rail associé  
Combined track:



7, rue Gay Lussac  
25000 BESANCON

Référence  
Item Nr: **25243L**

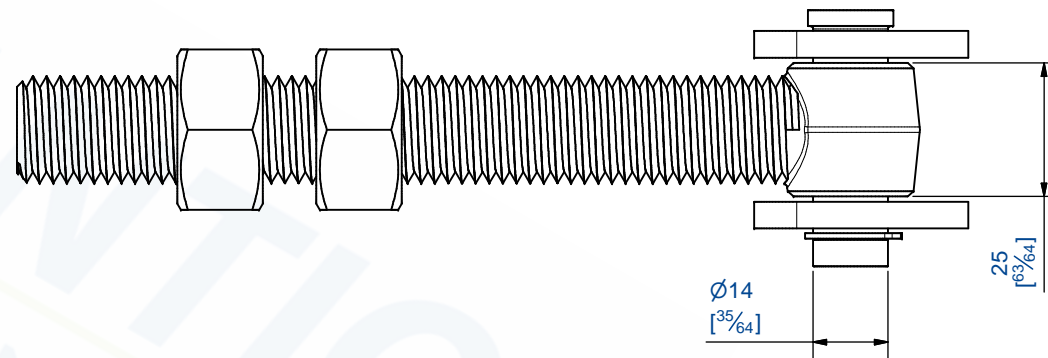
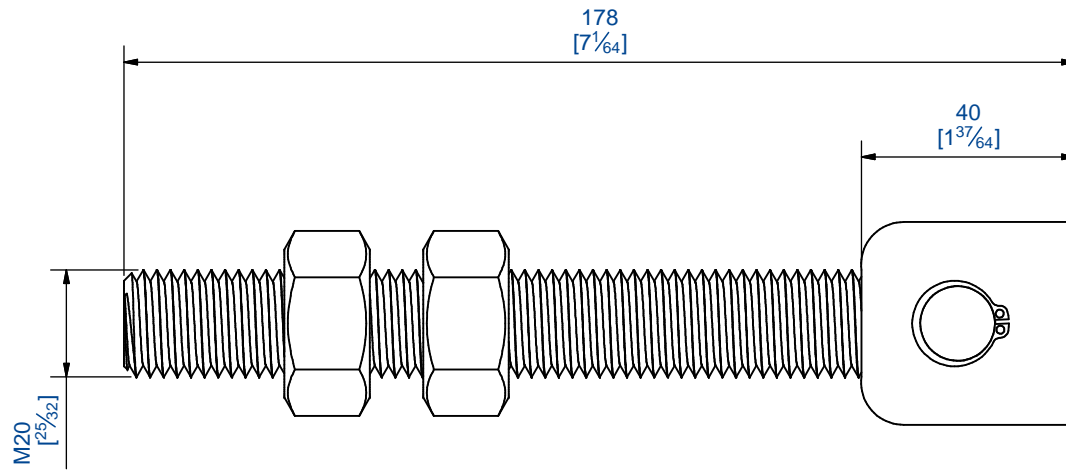
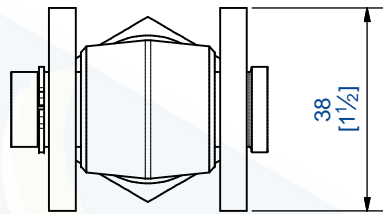
Rail associé  
Combined track:



7, rue Gay Lussac  
25000 BESANCON

Référence  
Item Nr: **25183SOL**

Rail associé  
Combined track:



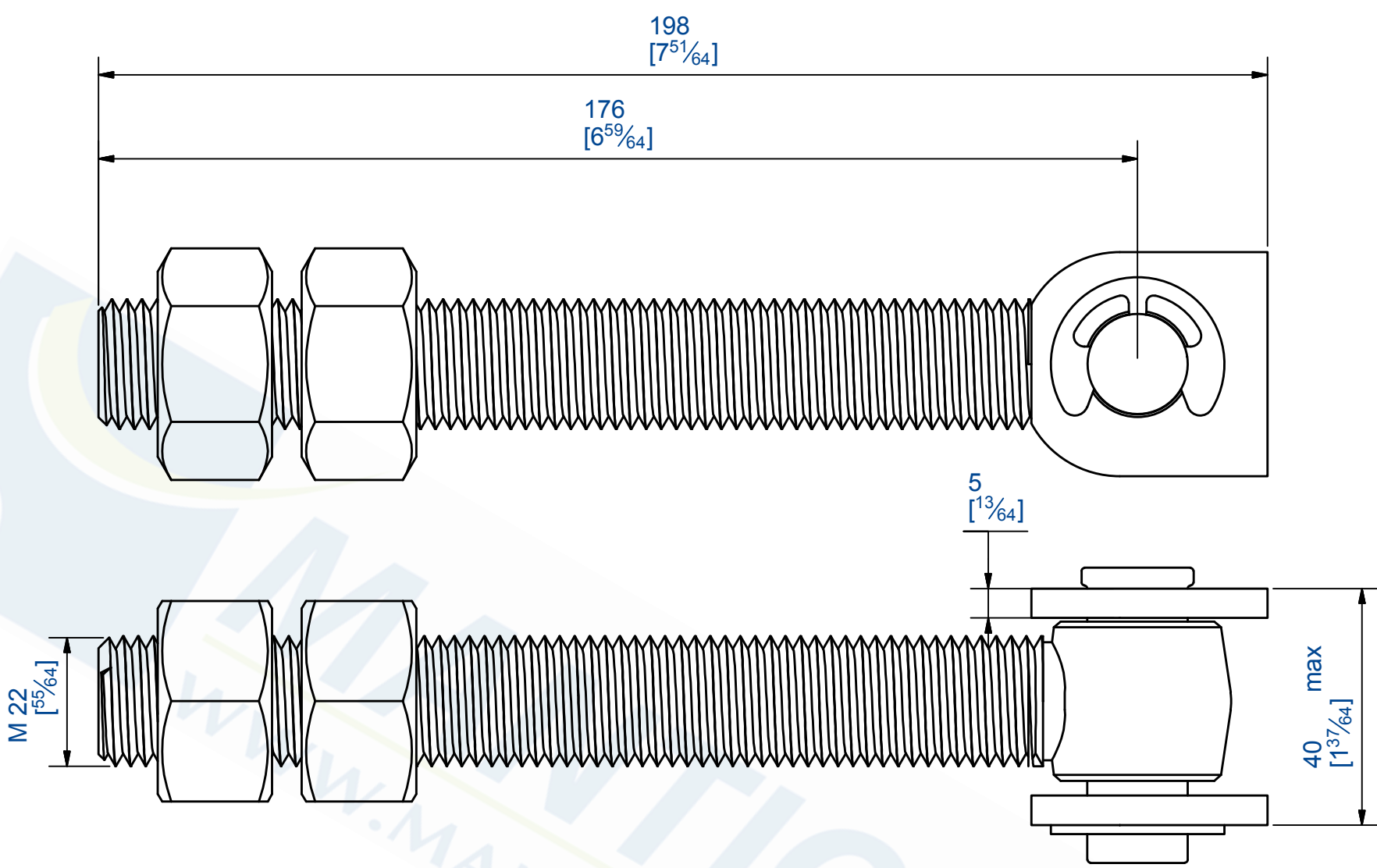
Gond à souder avec chape à visser.  
 Poids du portail : 200Kg

Hinges welding type with screwing type cap.  
 Gate weight : 200 Kg



Référence  
 Item Nr: **25203SOL**

Rail associé  
 Combined track:



  
**MANTION**  
 FERRURES DE PORTES COULISSANTES  
 MANUTENTION PAR MONORAIL  
 7,rue Gay Lussac  
 25000 BESANCON

Référence  
 Item Nr: **25223SOL**

Rail associé  
 Combined track: