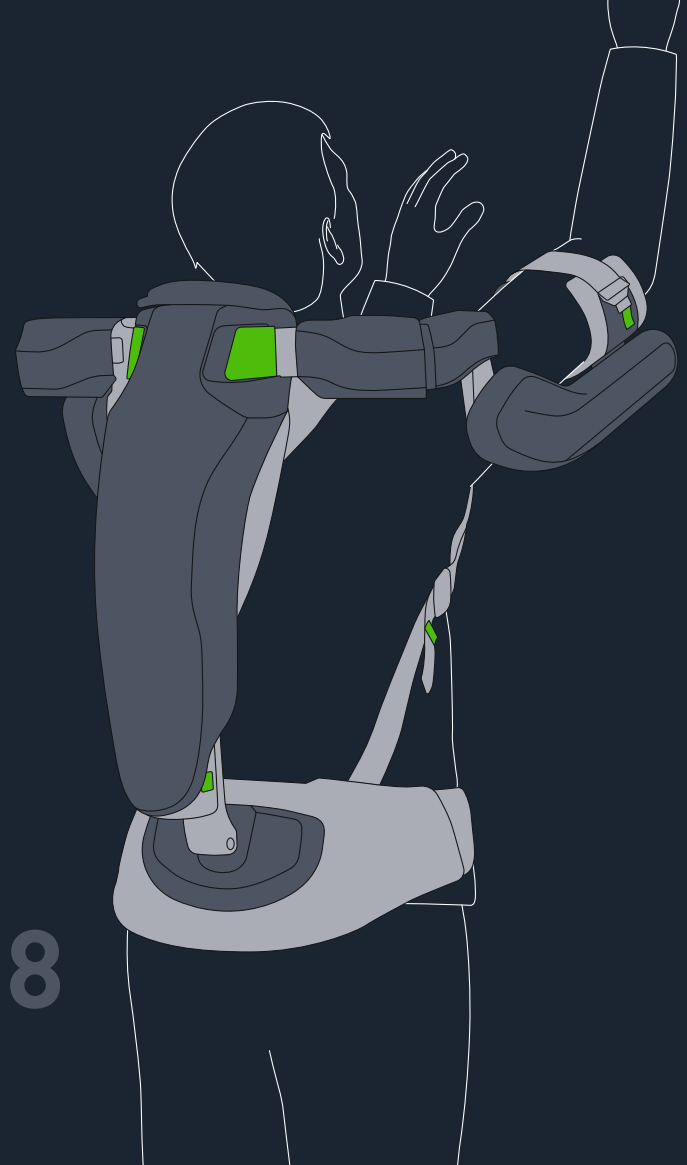


FESTOOL



ExoActive EXO 18

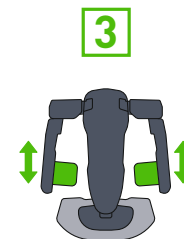
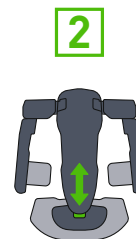
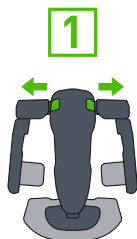
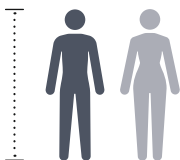
Quick Start Guide

Overview



- P. 02** Find your size
- P. 03–04** Adjust your size
- P. 04** Attach battery pack
- P. 05–07** Put on
- P. 08** Check fit
- P. 09** Switch on
- P. 09** Support area
- P. 10** Control
- P. 11** Pack after use

Find your size*



160-165 cm 64-65"	1	0	3	1	2	1
166-170 cm 66-67"	1	0	4	2	2	2
171-175 cm 68-69"	2	1	5	3	3	2
176-180 cm 70-71"	2	2	6	4	3	3
181-185 cm 72-73"	3	3	7	5	4	4
186-190 cm 74-75"	4	3	8	6	4	4
>190 cm >75"	5	4	>8	>6	5	5



160-165 cm 64-65"	2	0	3	1	2	1
166-170 cm 66-67"	2	1	4	2	2	2
171-175 cm 68-69"	3	2	5	3	3	2
176-180 cm 70-71"	4	3	6	4	4	3
181-185 cm 72-73"	5	3	7	5	4	4
186-190 cm 74-75"	6	4	8	6	5	4
>190 cm >75"	6	4	>8	>6	5	5



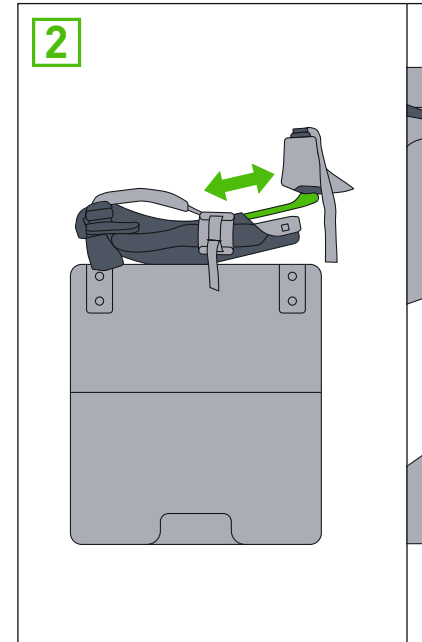
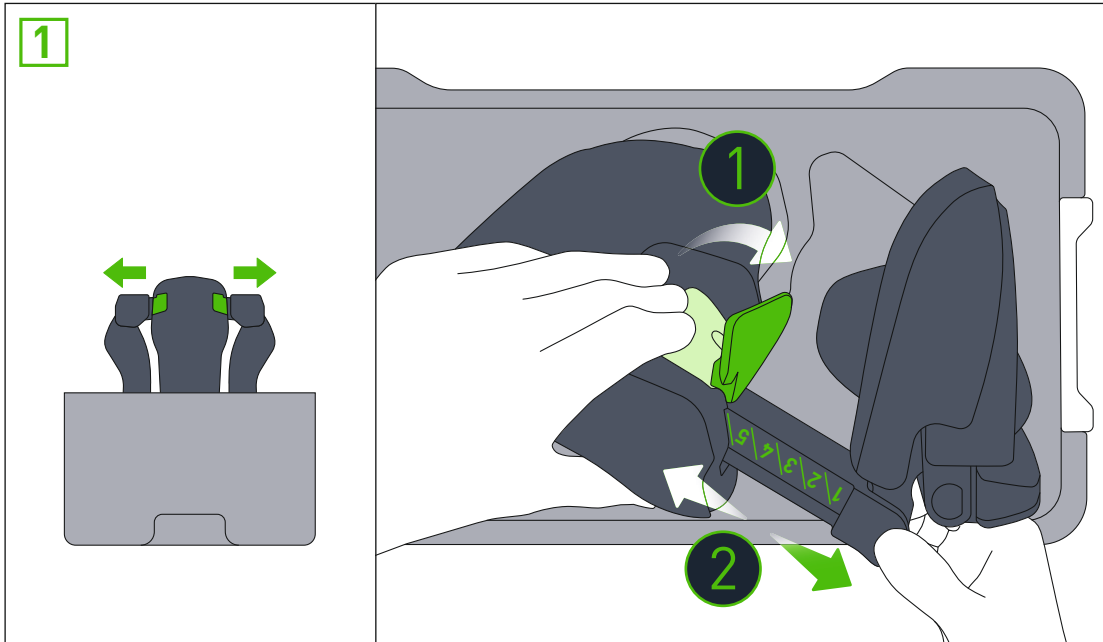
160-165 cm 64-65"	2	1	3	1	2	1
166-170 cm 66-67"	3	2	4	2	2	2
171-175 cm 68-69"	4	2	5	3	3	2
176-180 cm 70-71"	5	3	6	4	4	3
181-185 cm 72-73"	6	4	7	5	4	4
186-190 cm 74-75"	7	4	8	6	5	4
>190 cm >75"	7	5	>8	>6	5	5

* The values are a recommendation, if they do not fit, please use individual settings.

Adjust your size

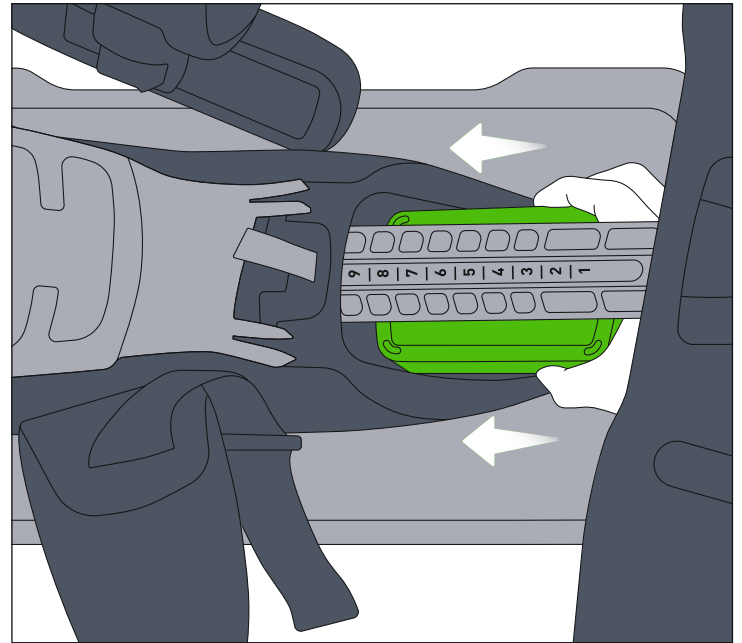
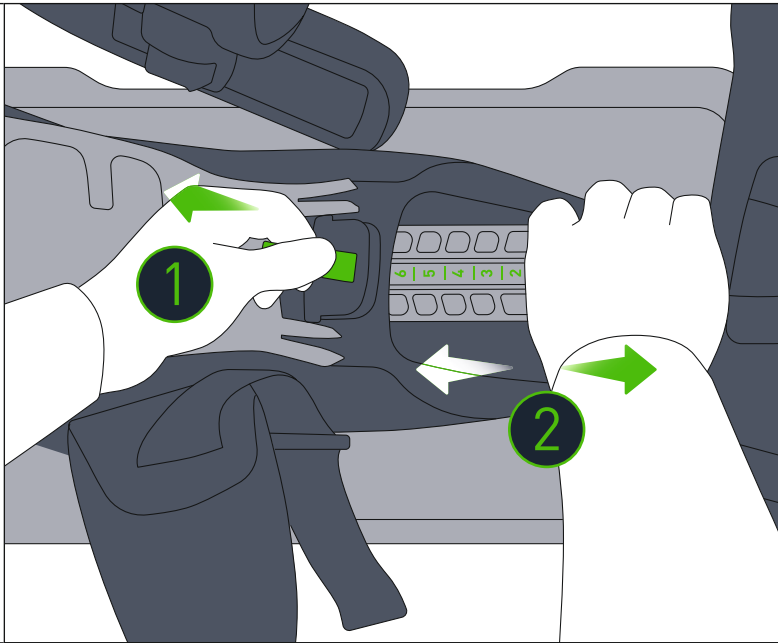
Shoulder width

Back length



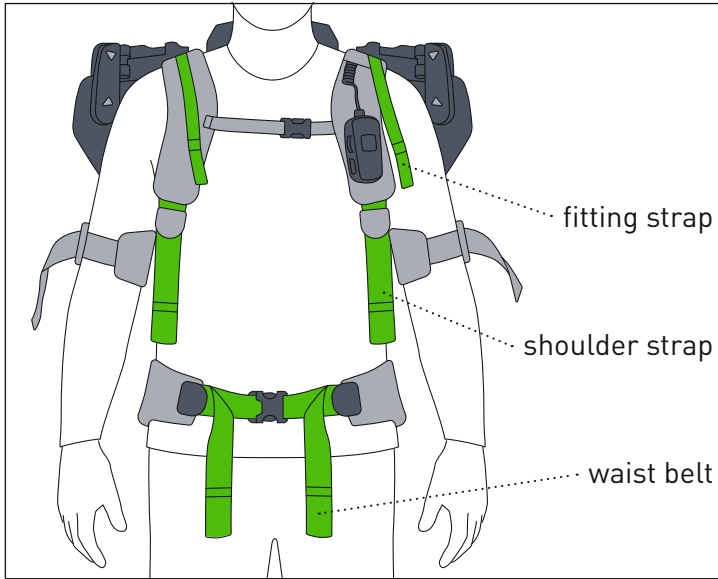
Attach battery pack

04

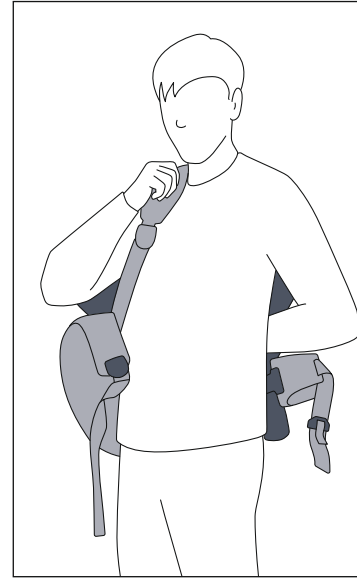


Put on

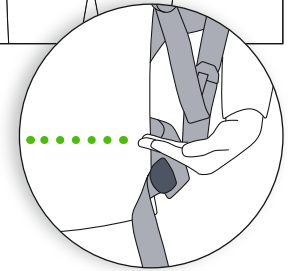
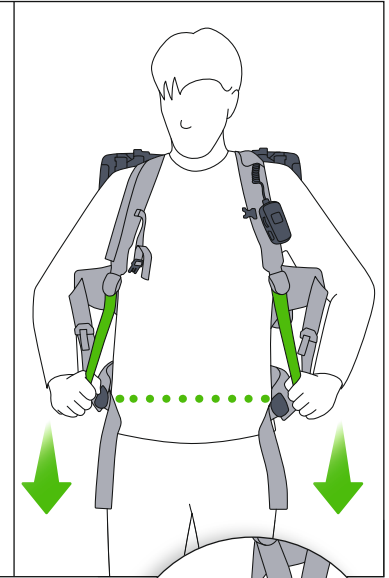
05



Suit up



Bring waist belt level and into position



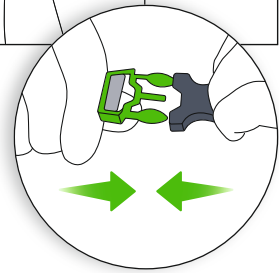
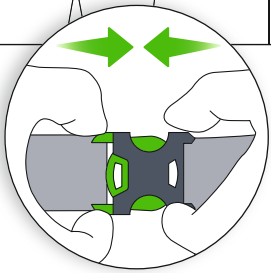
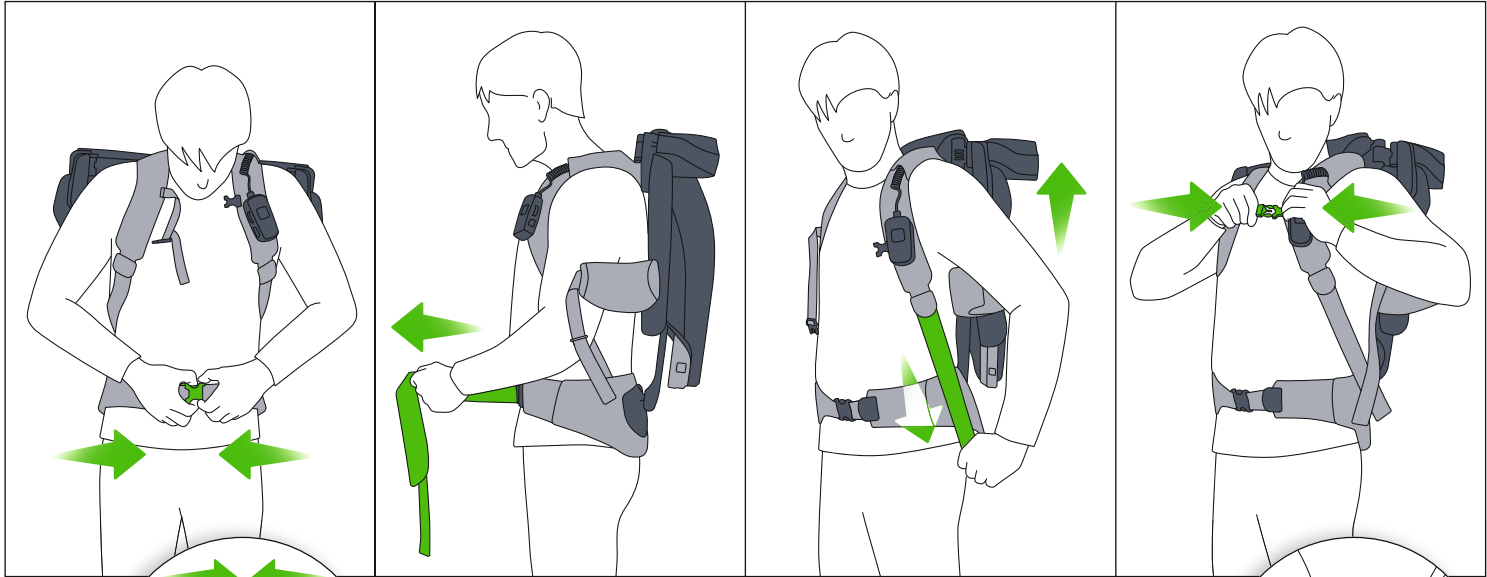
www.festool.com/ExoActive-QuickStartGuide02

Fasten waist belt

Pull waist belt; tight

Tighten straps; loosley

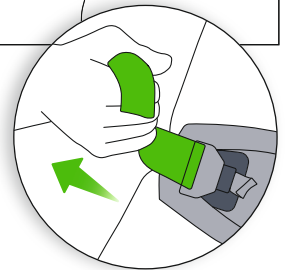
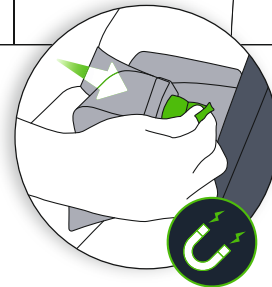
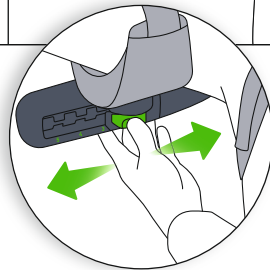
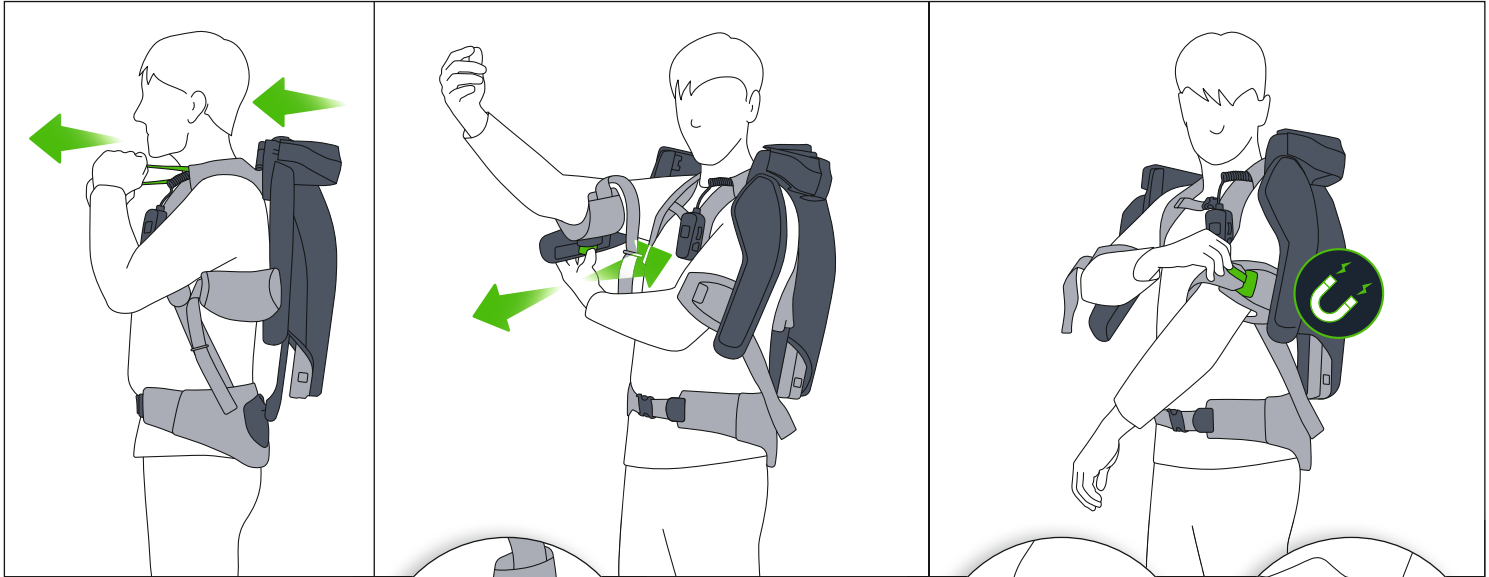
Fasten chest strap



Pull fitting straps

Adjust arm holders **3**

Close magnetic lock

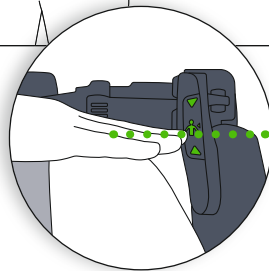
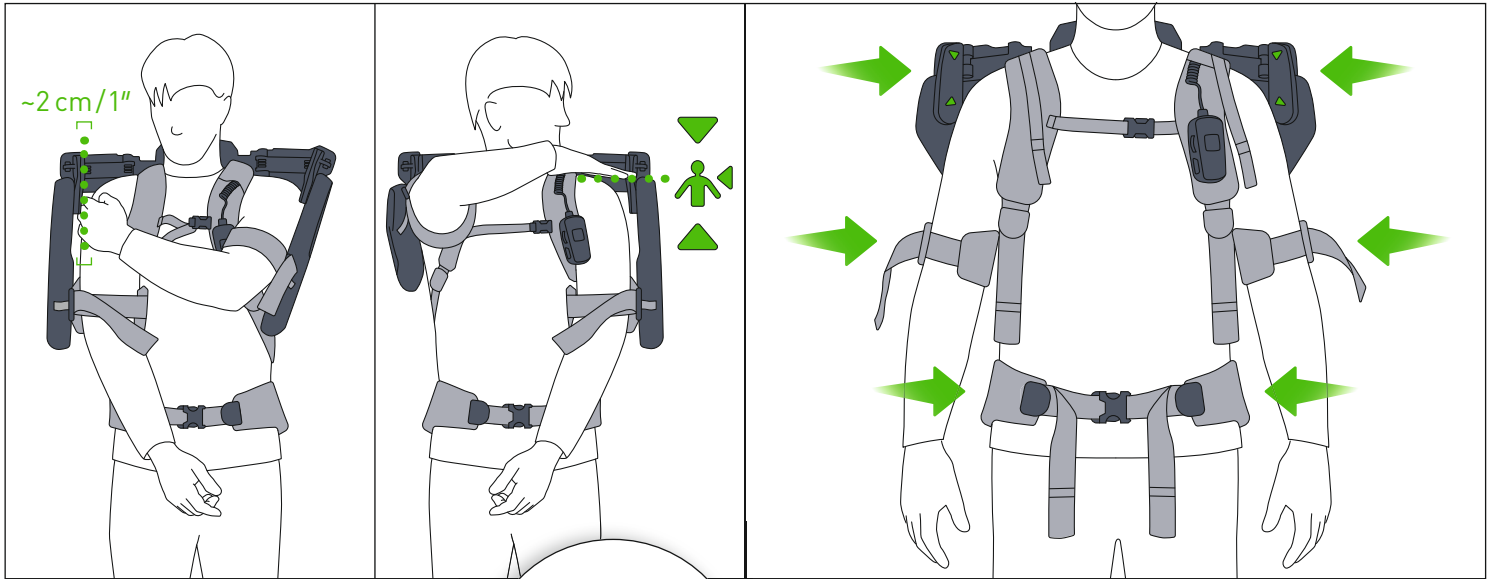


Check fit

Distance ~2 cm/1" to arm

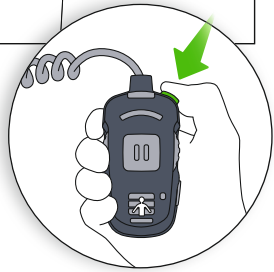
Shoulder is level to mark

Check: shoulder height & clearance, freedom of movement

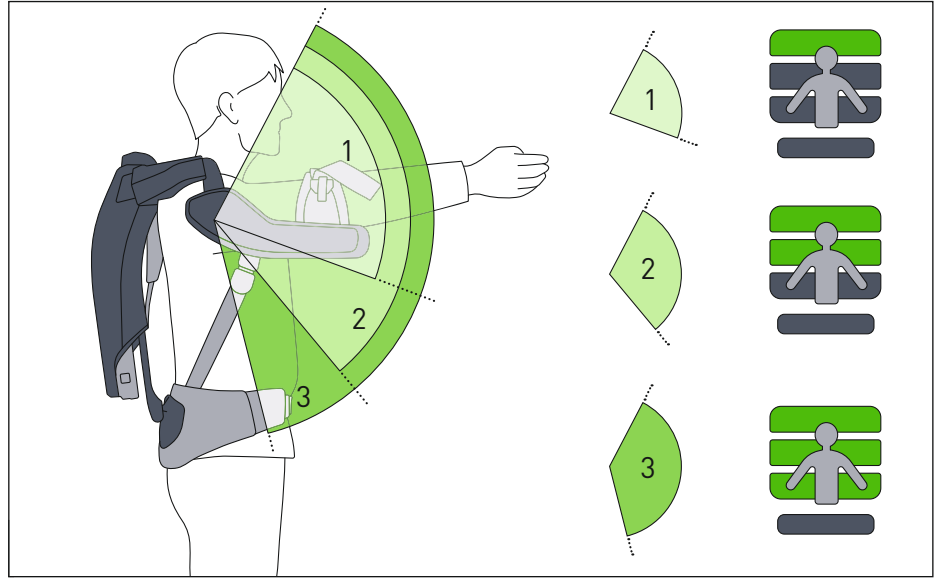


Switch on

Press ON/OFF ca. 1 sec



Support area



Control

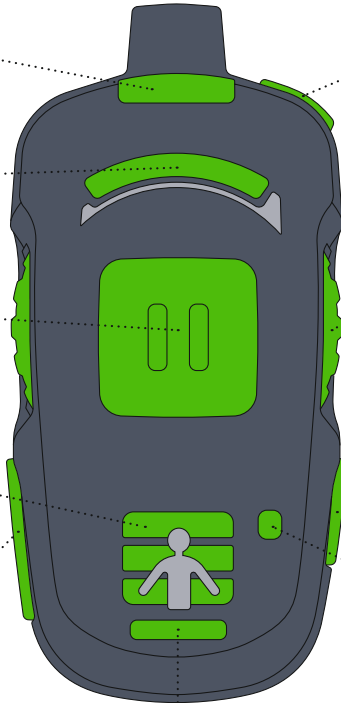
Operational & battery status

Status power level

Pause/operation

Support area 3/2/1

Change supporting area



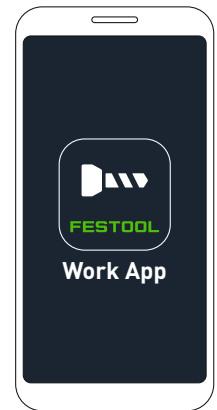
ON/OFF – Press ca. 1 sec

Power dial

Paring mode

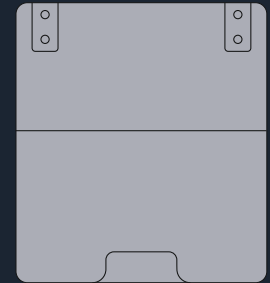
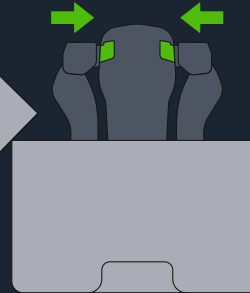
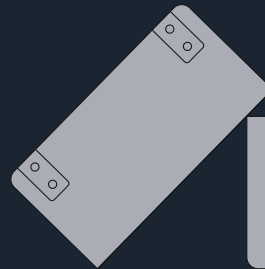
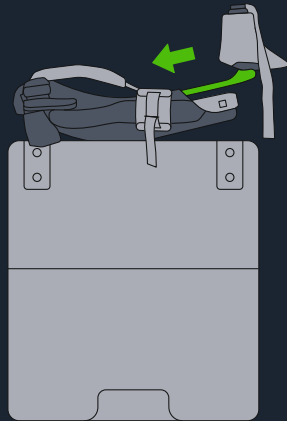
Bluetooth status

App controlled settings



Pack after use

OFF – Press ca. 1 sec



Register your tool
**FOR 3 YEARS OF
FREE WARRANTY**
www.festool.com/service



Festool GmbH

Wertstraße 20
73240 Wendlingen
Germany

Phone +49 (0)70 24/804-0
Email info@festool.com
www.festool.com



Festool is dedicated to taking care of forests for future generations. The following materials are FSC™-certified: paper.