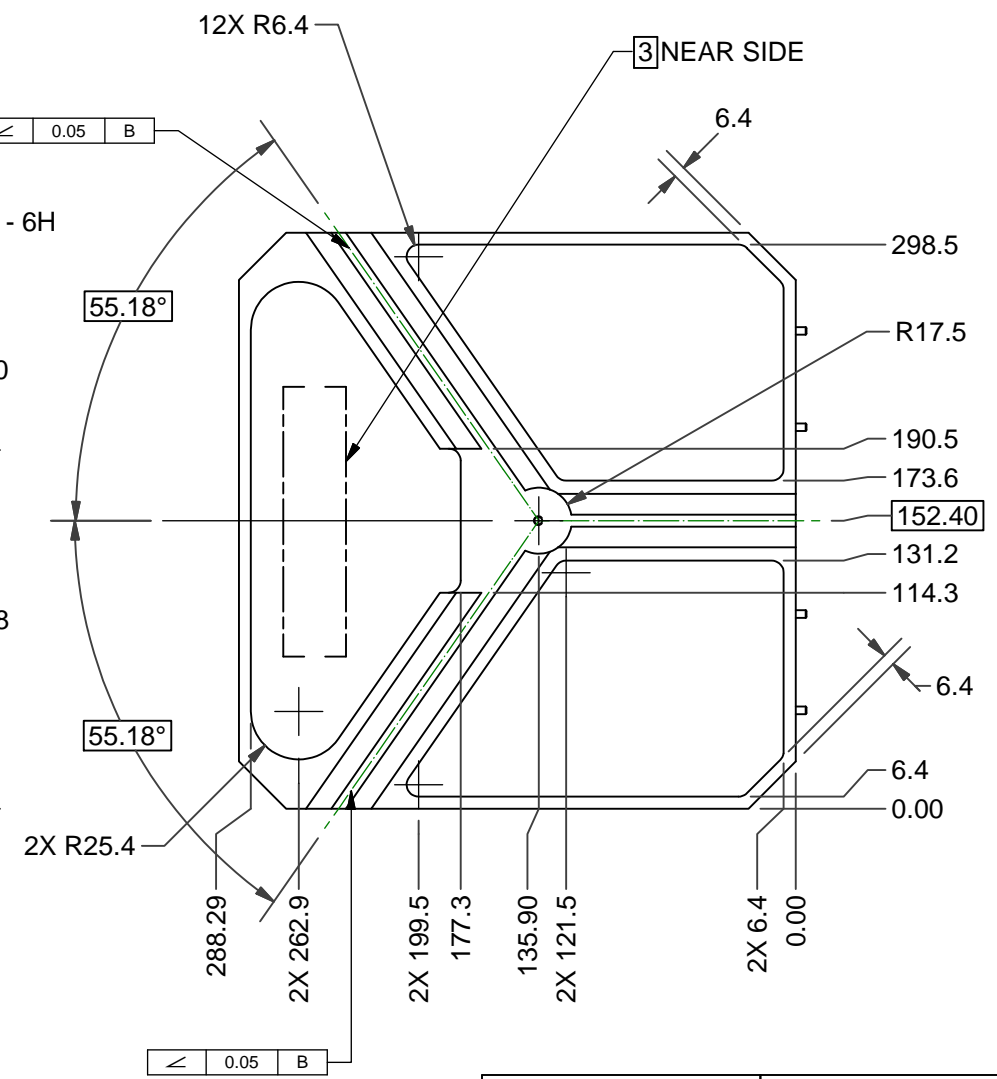
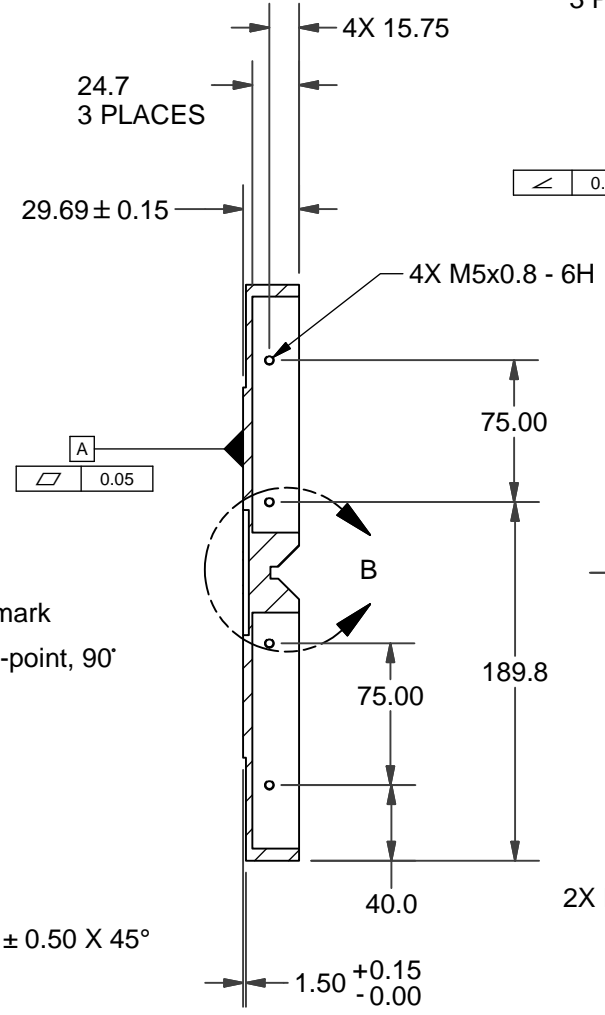
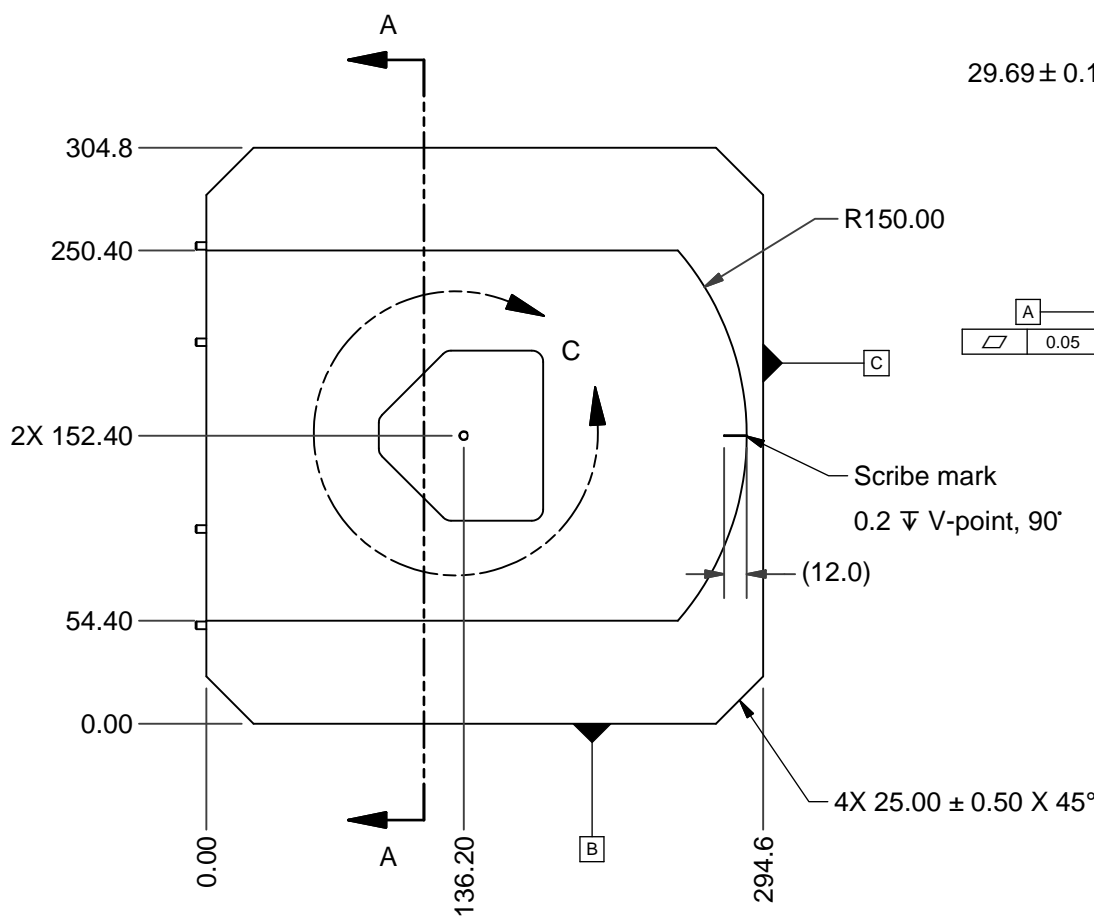
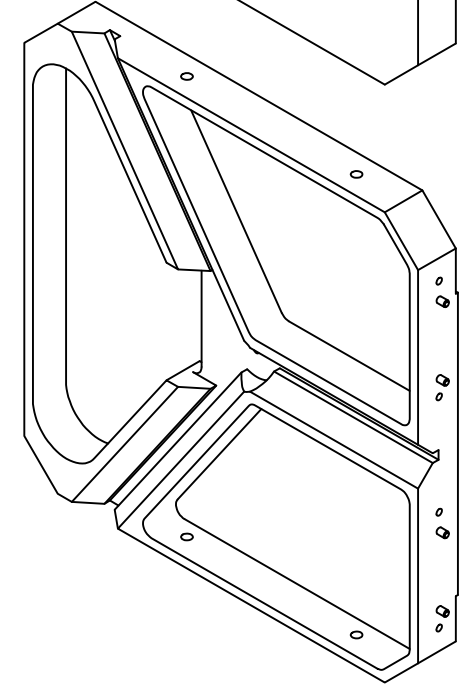
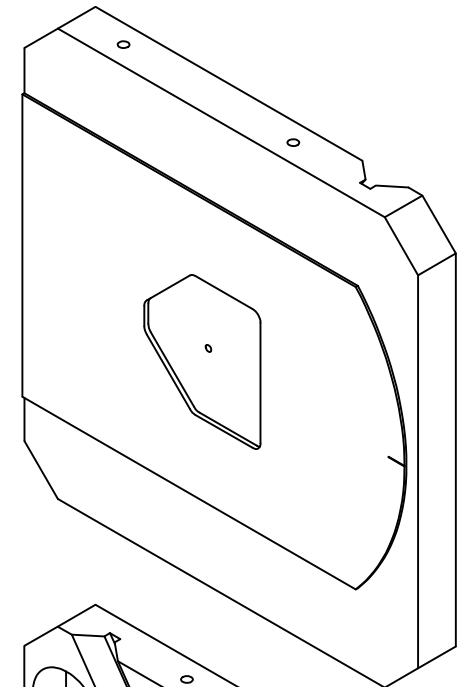
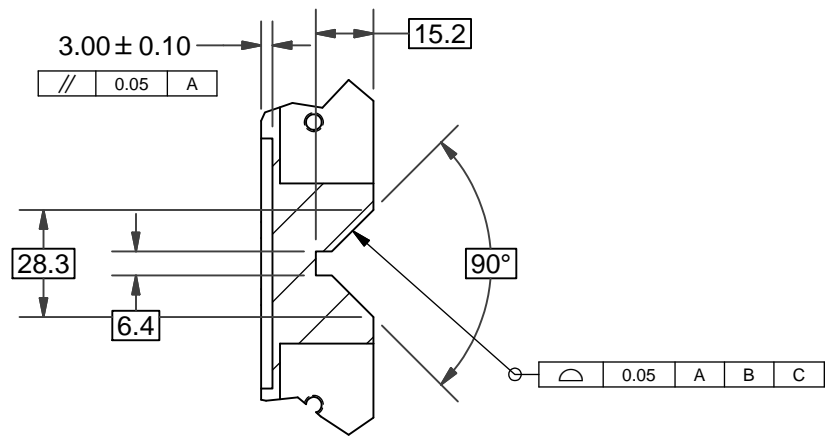
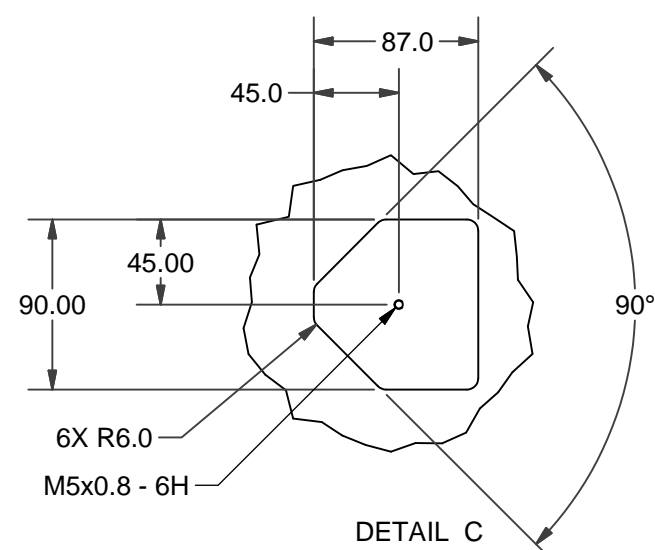


4

3

2

1



APPLICABLE STANDARDS AND SPECIFICATIONS:  
 1. ASME Y14.5M-1994 DIMENSIONING AND TOLERANCING.

SUPPLIER NOTES:  
 2. REMOVE ALL BURRS AND SHARP EDGES.  
 3. PART MARK ACCORDING TO DOCUMENT QSP0033, METHOD 2.  
 4. ANODIZE, RED, MIL-A-8625C, TYPE II, CLASS 2.  
 5. SURFACE AREA ~ = 2.8 SQUARE FEET.

UNLESS OTHERWISE SPECIFIED DIMENSIONS ARE IN MILLIMETERS TOLERANCES ARE:		THIRD ANGLE PROJECTION		TEACHING FIXTURE, BASE JIG		
DECIMALS	ANGLES	APPROVALS				DATE
.X ± 0.5	± .5	DRAWN	htran			1/27/2016
.XX ± 0.25		CHECK				
DO NOT SCALE DRAWING		ENGR		HTran	SIZE B	
MATERIAL		MFG ENG				
ALUMINUM MIC6		APPD				
PARENT		APPD			DWG NO VFX0038	
PARENT		APPD			REV A	
SCALE		NONE		SHEET 1 OF 2		

4

3

2

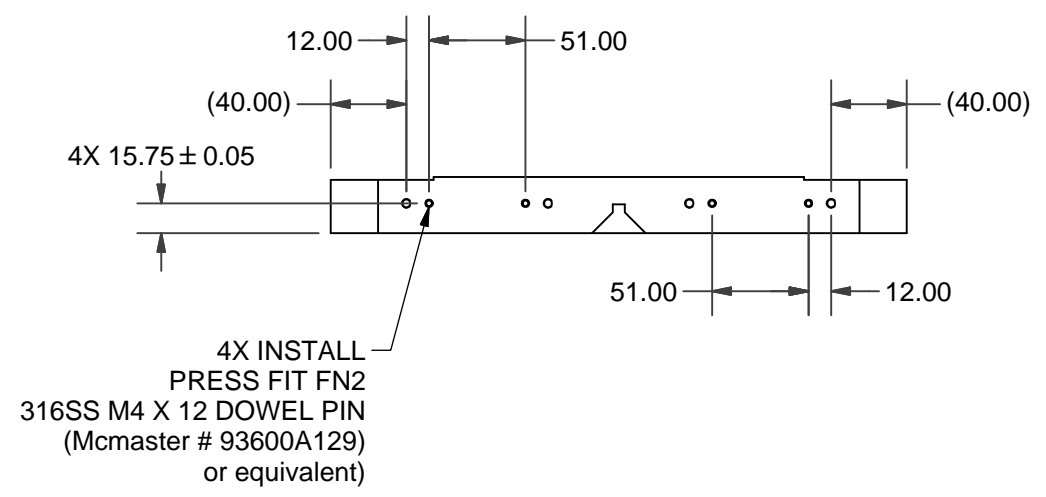
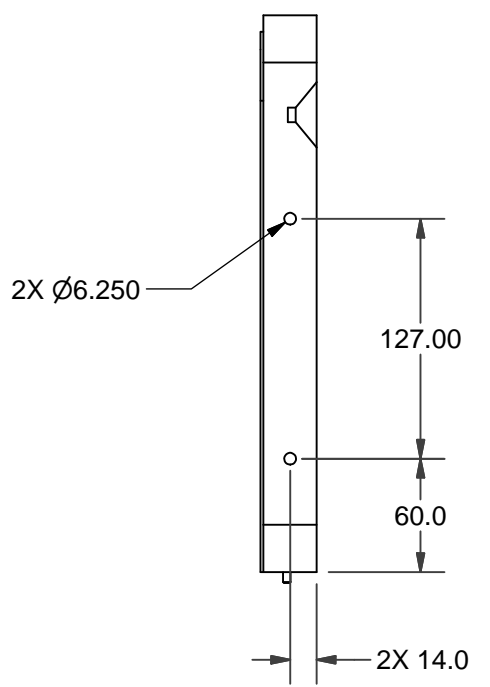
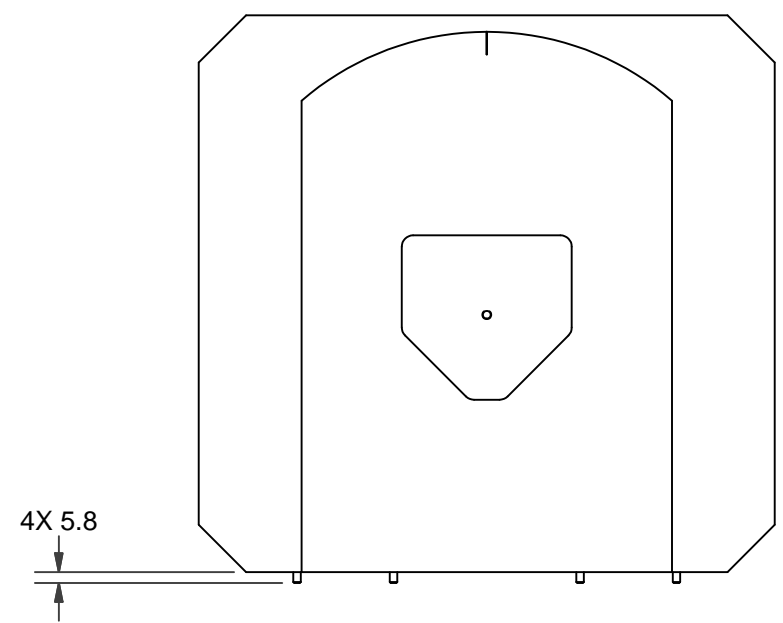
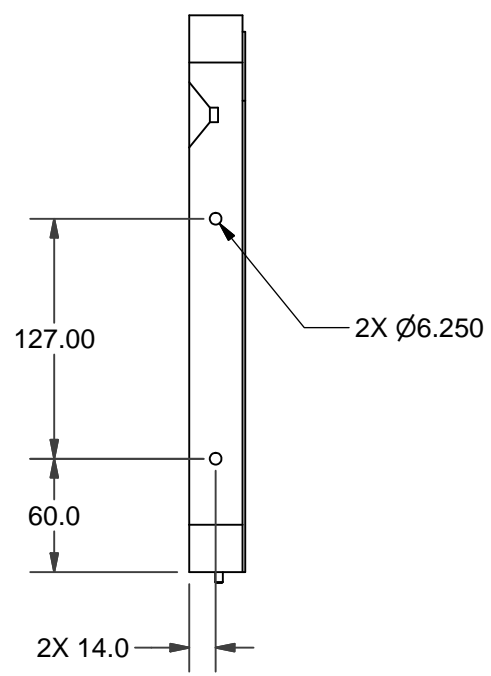
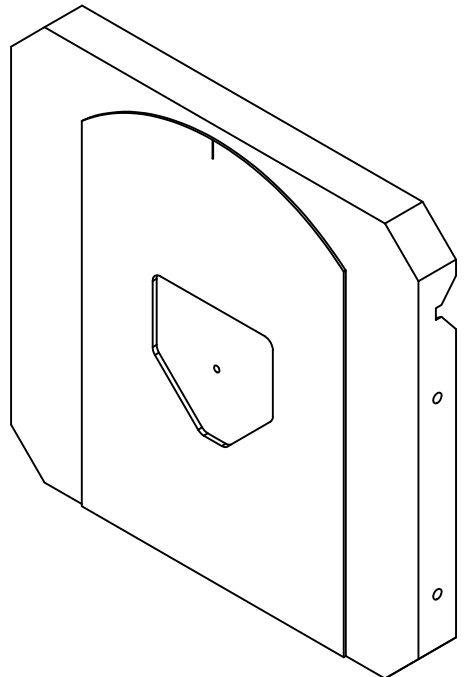
1

4

3

2

1



SIZE	DWG NO	REV
B	VFX0038	A
SCALE	NONE	SHEET 2

4

3

2

1

