

TRACKER® 1100 GD

Frequency Flexibility. Platform Scalability. A Heritage of Reliability.
Any Orbit. Any Network. Anywhere.

Product Sheet

**COBHAM
SATCOM**
Connecting the future



The TRACKER Range – Enabling new services and applications for emerging NGSO operators and service providers

A new approach to gateways and user terminals – scalable, easily implemented and supported, and cost-effective. TRACKER Gateways and User Terminals have been selected by LEO/MEO constellation operators, government agencies, and EO and New Space service providers based on proven performance and reliability, robust design suitable for all environments, low total cost of ownership, and Cobham SATCOM's ability to meet demanding implementation schedules.

Modular and easily configured, TRACKER terminals are available in a range of sizes and in single or dual frequency bands. Three-axis tracking with protective radome allows operation in the harshest environments and ensures accurate tracking at all times, with optimum signal quality, uninterrupted passes, low power consumption, and high reliability.

Tracker User Terminals enable a new range of services and applications, utilizing both GEO and MEO/LEO satellites, and combine high performance and reliability with ease of installation and use.

Tracker 1100 GD – Optimized for Government and Defense Applications

The TRACKER 1100 GD is a versatile, modular and cost-effective user terminal that provides secure, mission-critical data and control links for a growing range of defense and government applications. Combining flexibility with resilience, the system is compliant with both MIL environment and EMI/EMC requirements, as well as incorporating cybersecurity features. In addition to compliance with stringent MIL requirements, the TRACKER 1100 GD is readily adapted for transportable and field deployable solutions.

Enabling new mission capabilities

Capable of operating in any GEO and NSGO orbit, TRACKER 1100 GD is the most versatile solution available. Users can quickly switch between orbits, constellations, bands and satellites, expanding options and providing unprecedented mission agility. It can be configured for Ku- and Ka-Band, or both.

Unsurpassed Pointing Accuracy

The TRACKER 1100 GD consists of a 3-axis tracking antenna with a 1m aperture, housed in a protective 1.55m/ 61 in spherical radome. The system is designed to meet RF, pointing, and performance specifications for a leading LEO/MEO/GEO networks and operators, providing long term flexibility.

Robust Design & Ease of Installation

Systems are delivered pre-configured and pre-tested, with simple software tools and secure interfaces, allowing quick installation and connection to the user network.

High reliability, ease and flexibility of installation, and the proprietary balanced low-power tracking system ensure uninterrupted operation at a significantly lower total cost of ownership than other User Terminals.

Systems come with a full warranty, backed by Cobham SATCOM's 24/7 customer service and global support network, with optional tailored support services for operators and service providers.

TRACKER® 1100 GD

3-Axis LEO/MEO/GEO tracking antenna system
compatible with Ka-band satellites



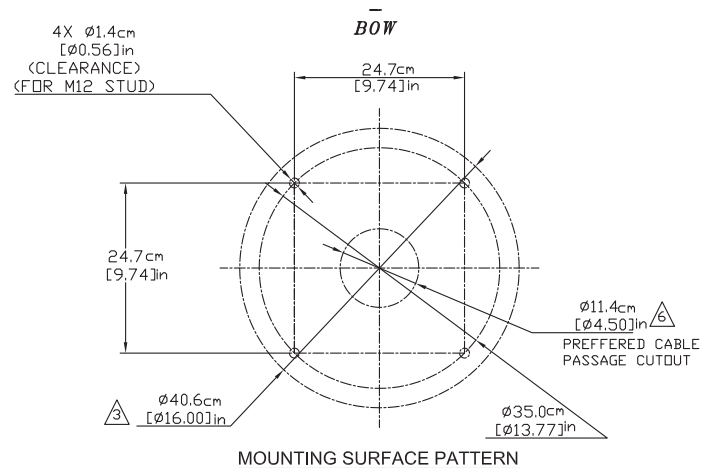
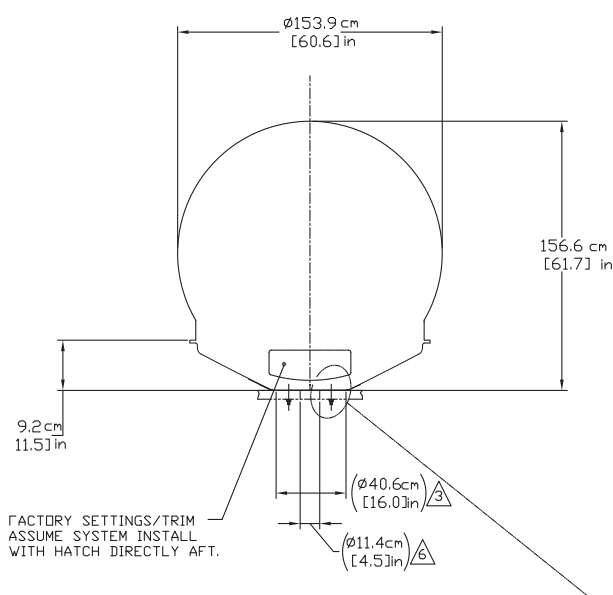
Typical Data for the TRACKER 1100 GD

SPECIFICATIONS

| | | |
|------------------------|---|---|
| Reflector Size | 1.1m / 43 in D Ring Focus | |
| Radome Diameter | 1.55 m / 61 in D (Spherical) | Radome Diameter 1.55 m / 61 in D (Spherical) |
| Tx Frequency | 27.5 GHz to 31.0 GHz | |
| Rx Frequency | 17.7 GHz to 21.2 GHz | |
| Tx Gain | 48.5dBi @ 31 GHz | |
| Rx Gain | 45.5dBi @ 20.5 GHz | |
| BUCs | Various Ka-band BUCs available | |
| Pedestal Type | 3 Axis (Azimuth, Elevation, Cross Level) | |
| Azimuth | Unlimited | |
| Elevation Joint Angle | -15°to +115° | |
| Weight | 160 kgs / 353 lbs | |
| Polarization | Circular LHCP or RHCP (Remotely Selectable) | |
| Stabilization Accuracy | 0.1 ° RMS | |

Typical Data for Media Exchange Point (MXP)

- Standard 19 inch 1U rack mount (slide rails optional)
- 43 cm x 43 cm x 4.35 cm / 17 in x 17 in x 1.75 in
- 110/220VAC, 47-63 Hz, Single Phase
- 3.0 kg (6.6 lbs)
- 4 Ethernet Ports
- 1 Ethernet Port (Internal, RJ)
- 1 sma Connector (Rx from RJ)
- 1 F-Connector (RJ to diplexer)
- 6 Tri colored MXP status LEDs
- USB Device (Mini B)
- 2 RS-232 pass through ports
- 1 NMEA RS-232 serial port
- 1 RS-232 Console port



For further information please contact:
satcom.tracker@cobhamsatcom.com