

Herefordshire Local Plan 2021-2041

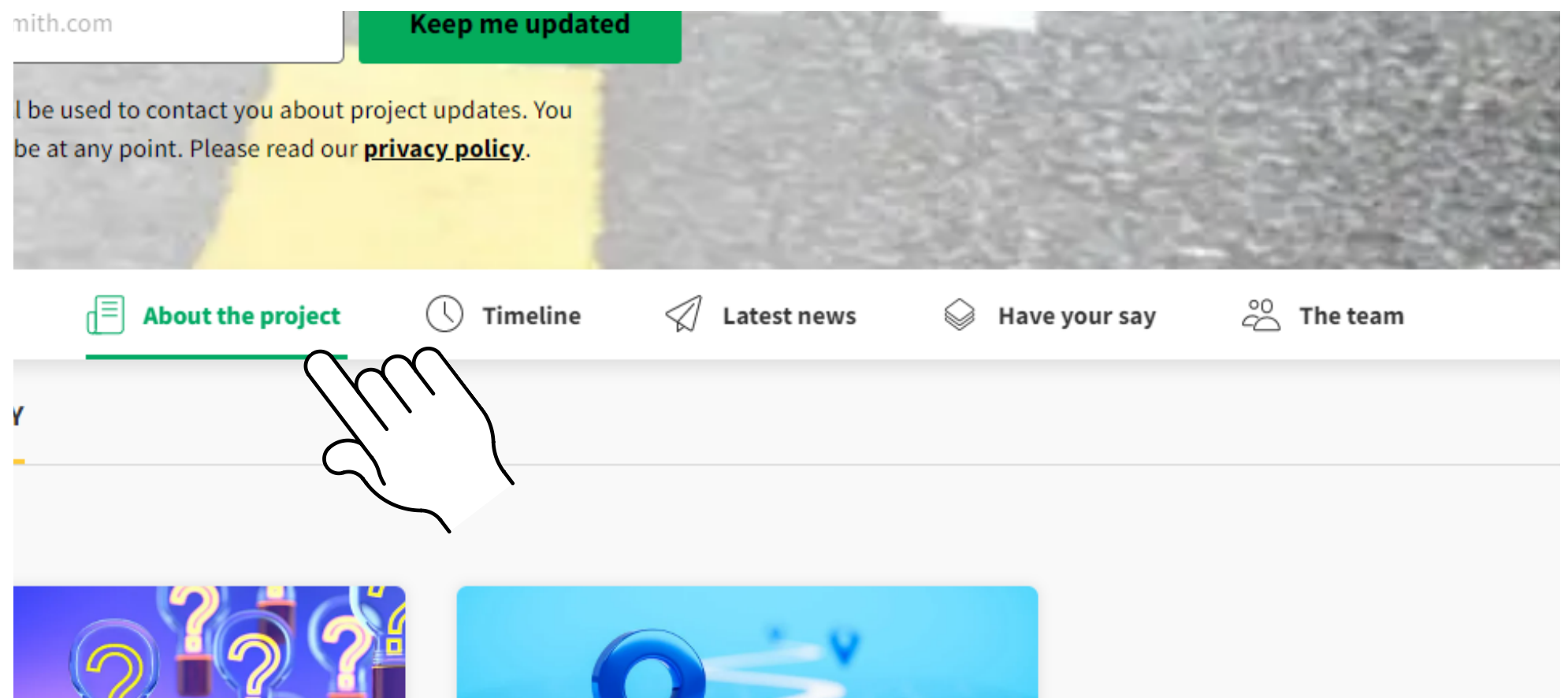
A guide on how to navigate the Place Making Consultation

13 June 2022 until 29 July 2022



Enter your email address and click the **'keep me updated'** button to register

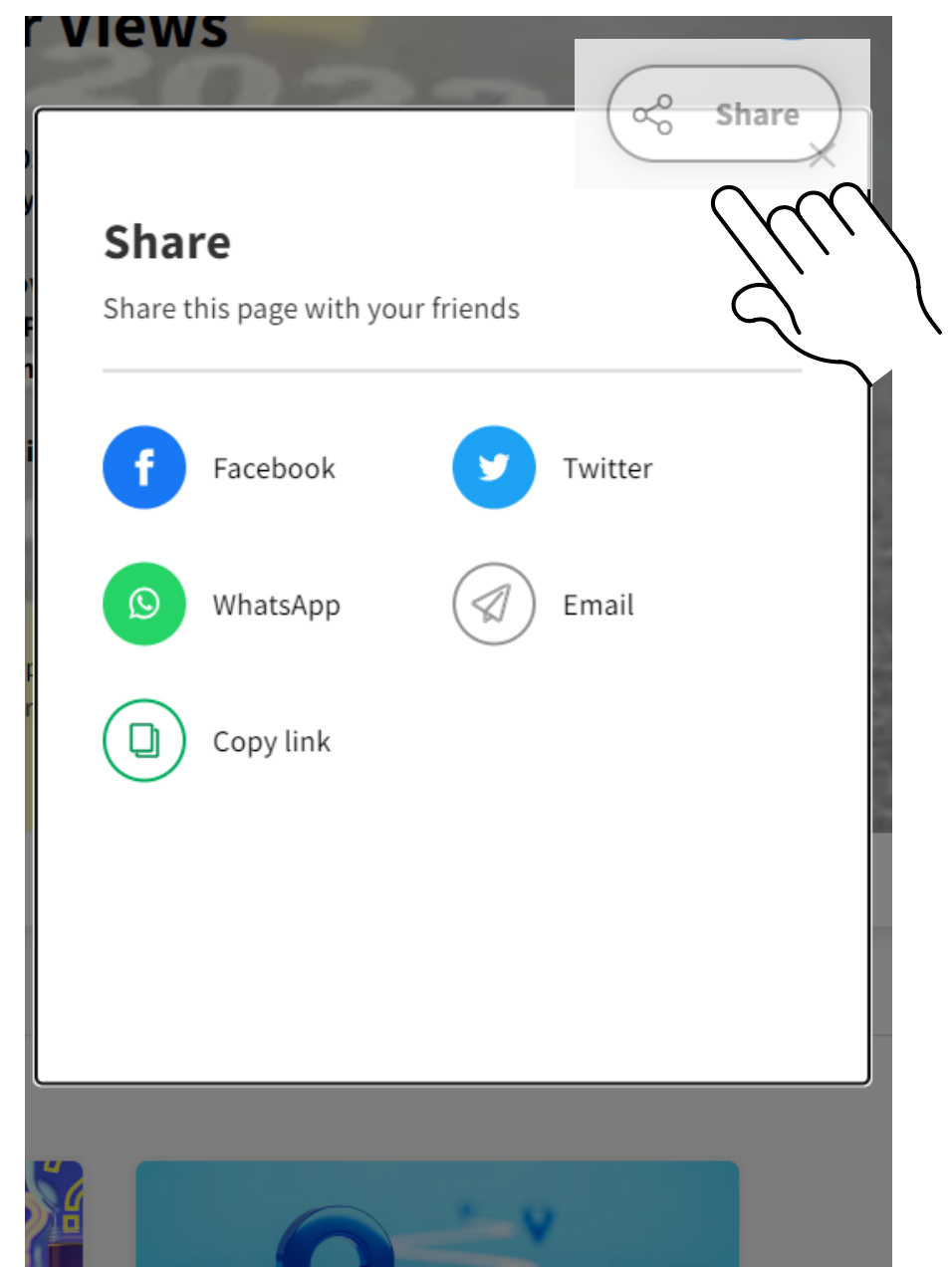
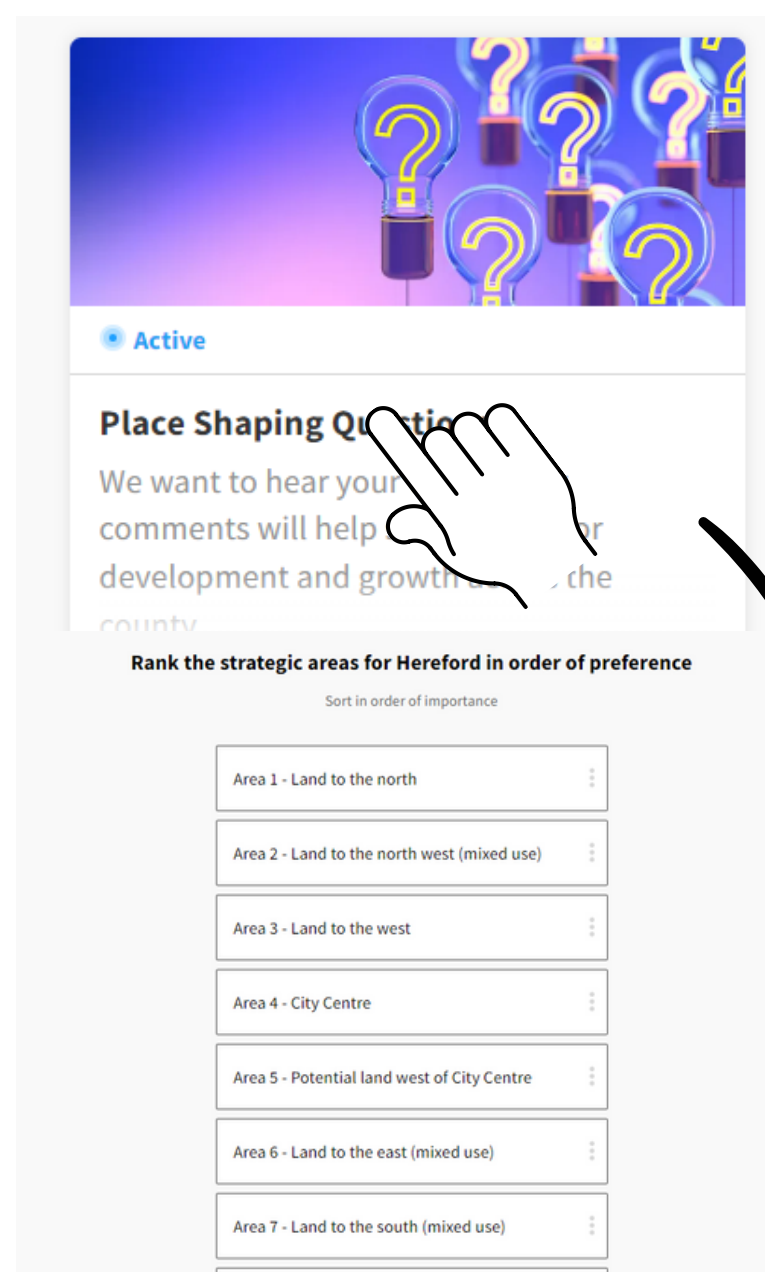
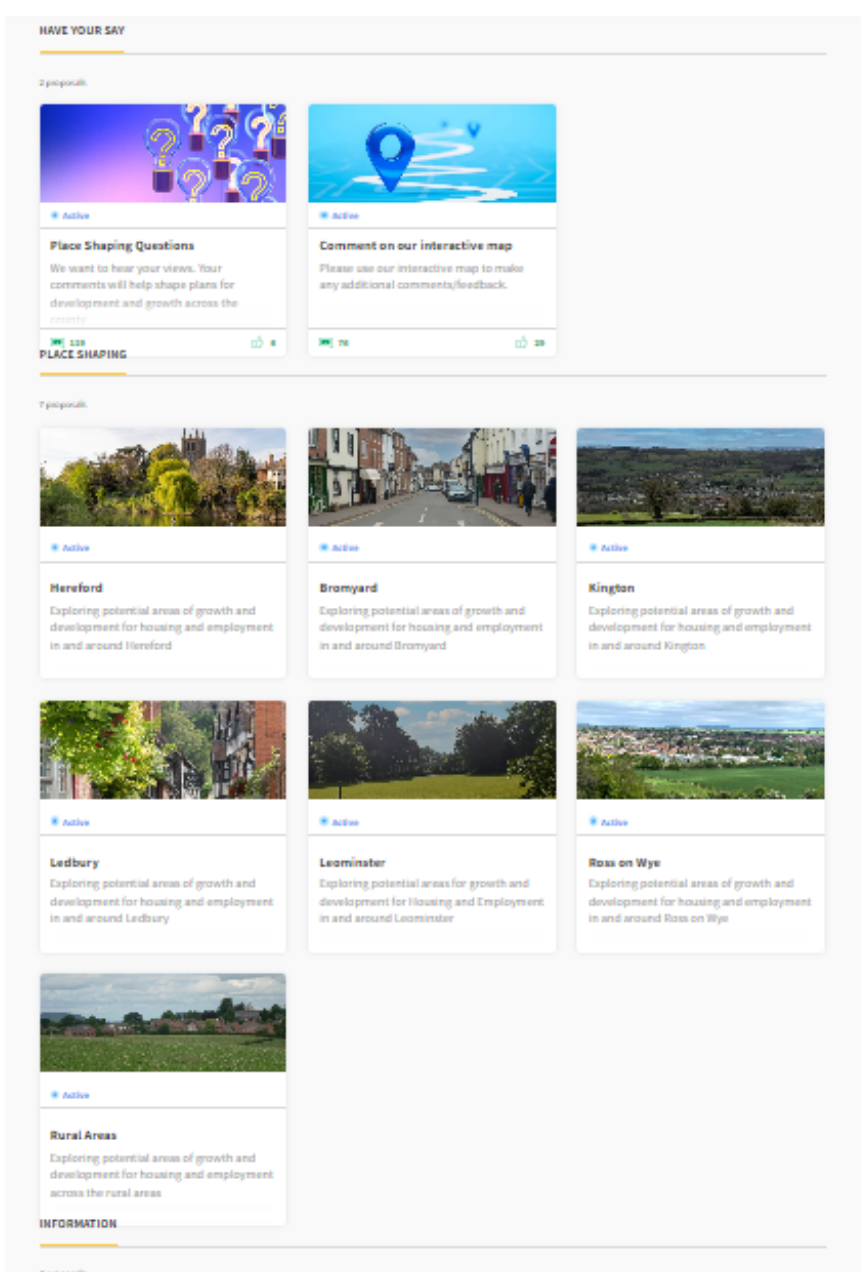
Icons along the main page will help to direct you through the consultation. You can view the project time line and see any latest news using these tabs



Scroll down to access all of the consultation documents and to have your say

Have your say by completing the consultation questionnaire by clicking on the **'Place Shaping Questions'** tile

Use the sharing options to tell your friends and neighbours about the consultation



Scan here to go to the consultation pages:

