

THE VISION FOR THE PROPOSED REGENERATION OF

Armada Way

This is an exciting opportunity for those who live, work or own a business in Plymouth, to reclaim, reinvigorate and renew Armada Way, creating a space that brings life back to the heart of the city.

All the images of the proposals in this consultation, show what Armada Way would look like on initial completion e.g. the heights of the trees are accurate from planting, they will grow much more over time.

We really hope that the proposed scheme has something for everyone to make Armada Way an attractive, green and usable space.



Recapture the scale and grandeur of Armada Way – providing a gateway to the city centre, linking the train station to The Hoe.



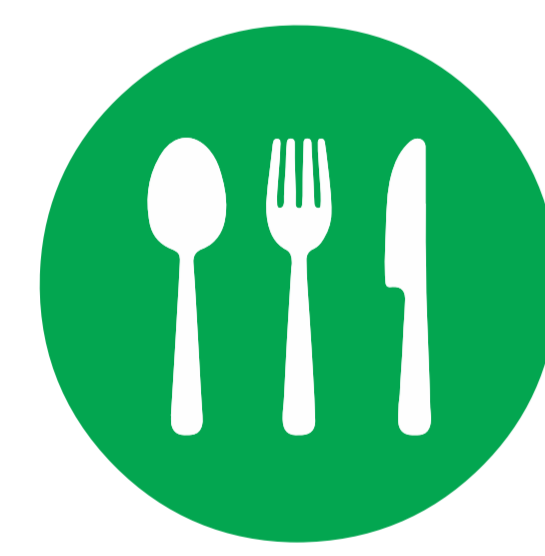
More trees and greenery – it is proposed there will be 202 trees in total giving 50 more trees than there were previously on Armada Way (before the felling). The new trees will all be 3.5 to 8 metres high when planted, to give immediate environmental benefits and a canopy to provide cover.



Helping wildlife and nature – there will be a variety of trees providing a range of habitats, shrubs, wildflowers and reed beds, as well as bug hotels and bird boxes.



Huge play village for families – a destination play village is proposed that will be the size of five tennis courts, full of spaces to run, splash, balance, swing, climb, relax and sit, for children of all ages and their carers/parents to enjoy.



Places to sit, relax and eat – there will be spaces for 500 people to sit.



Working smartly to deal with the city's rainwater – a new surface water drainage system will be included, powered by solar panels to make it sustainable. It will recycle the water to maintain the plants and trees.



Improved safety for all – we're proposing the installation of 12 and 15 metre high lighting throughout and feature lighting to up-light plants and create patterns on the ground.



A much-improved CCTV system – and clear views across Armada Way will help to deter anti-social behaviour.



Cycling path for people of all abilities – a new cycle path is proposed to cater for cyclists of all abilities, with cycle racks and Beryl Bike hubs.



Pop-up spaces with water and power – pop-up spaces will be available for retail, arts and entertainment.



**Let's
Talk
Armada
Way**



**PLYMOUTH
CITY COUNCIL**

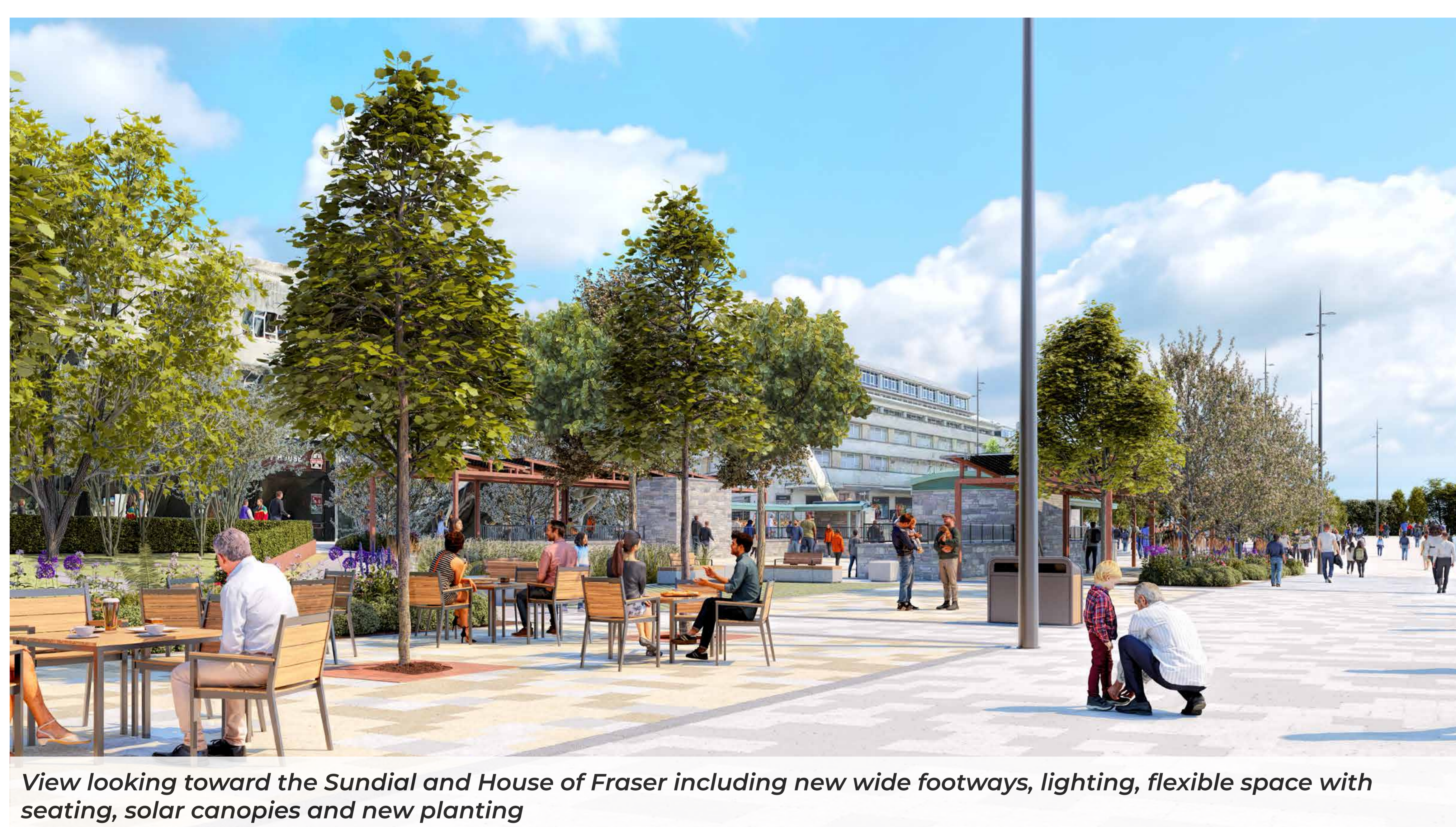
Images of the proposed scheme



View looking towards North Cross of the new amphitheatre and piazza space with restored Phoenix fountain and new planting



Looking across from the Central Library beyond the food and beverage spaces and topiary canopy trees towards the children's play village which stretches from Mayflower Street to beyond Place de Brest



View looking toward the Sundial and House of Fraser including new wide footways, lighting, flexible space with seating, solar canopies and new planting



View across towards Specsavers showing new planting with treehouse play space, children's play equipment and new planting including reed beds



Looking north across the central path towards children's play village and increased number of dancing jets

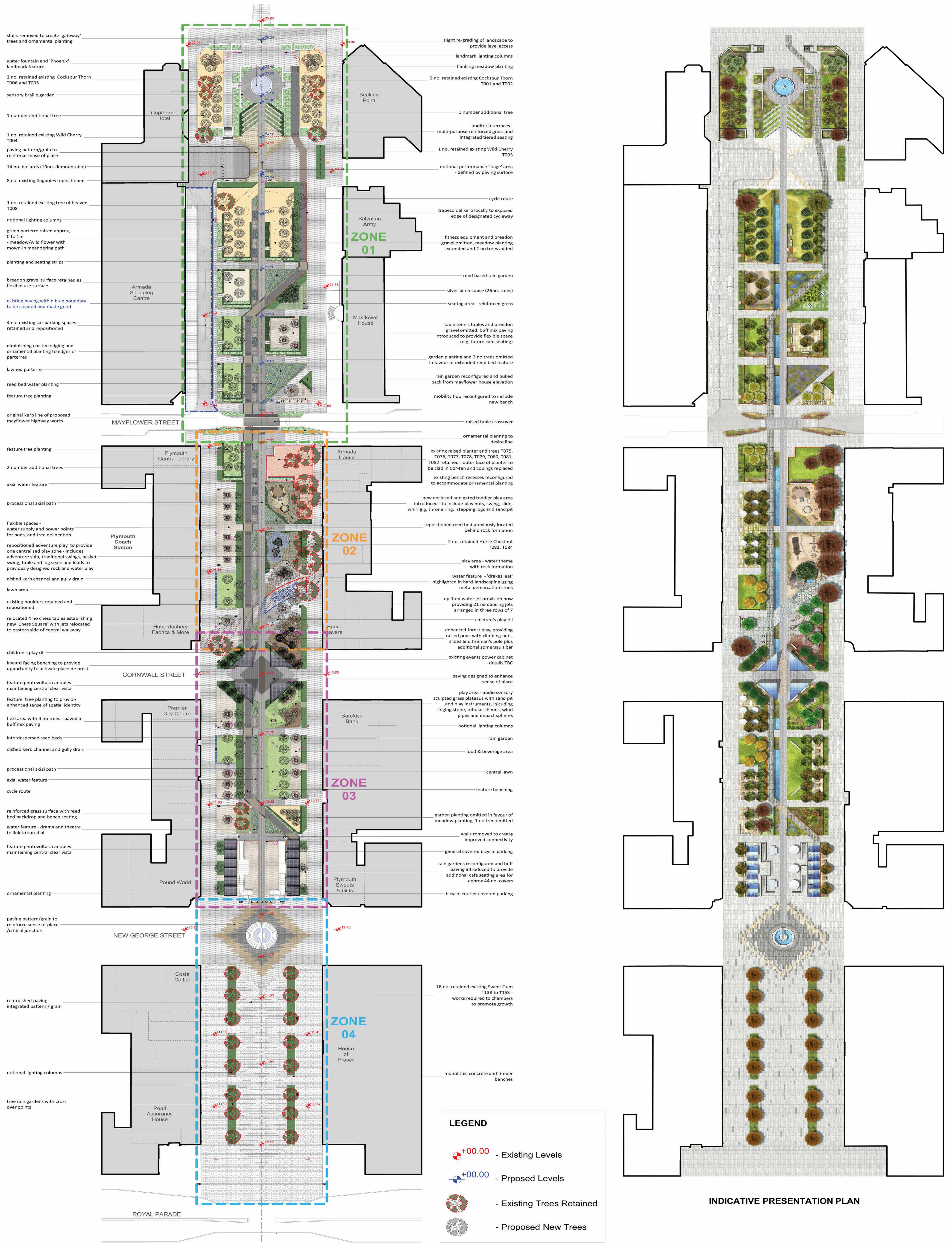


View looking south along the central path through the new Place de Brest, with solar canopies, new covered seating, lawned areas and planting



View looking north across Armada Way close to the Coach Station showing food and beverage spaces, cycle path and stream and new planting

Design of the proposed scheme



How to get involved

If you really want to help transform your city centre and feedback on the proposed scheme, then please do make sure you get involved.

How will the Council listen to people and groups?

The Council has appointed ECF to design, run and report upon the consultation as they design and deliver bespoke communications and engagement campaigns that help bring their clients and the communities they work with, closer together. ECF's strategic expertise will ensure that the consultation process is transparent, robust and inclusive.

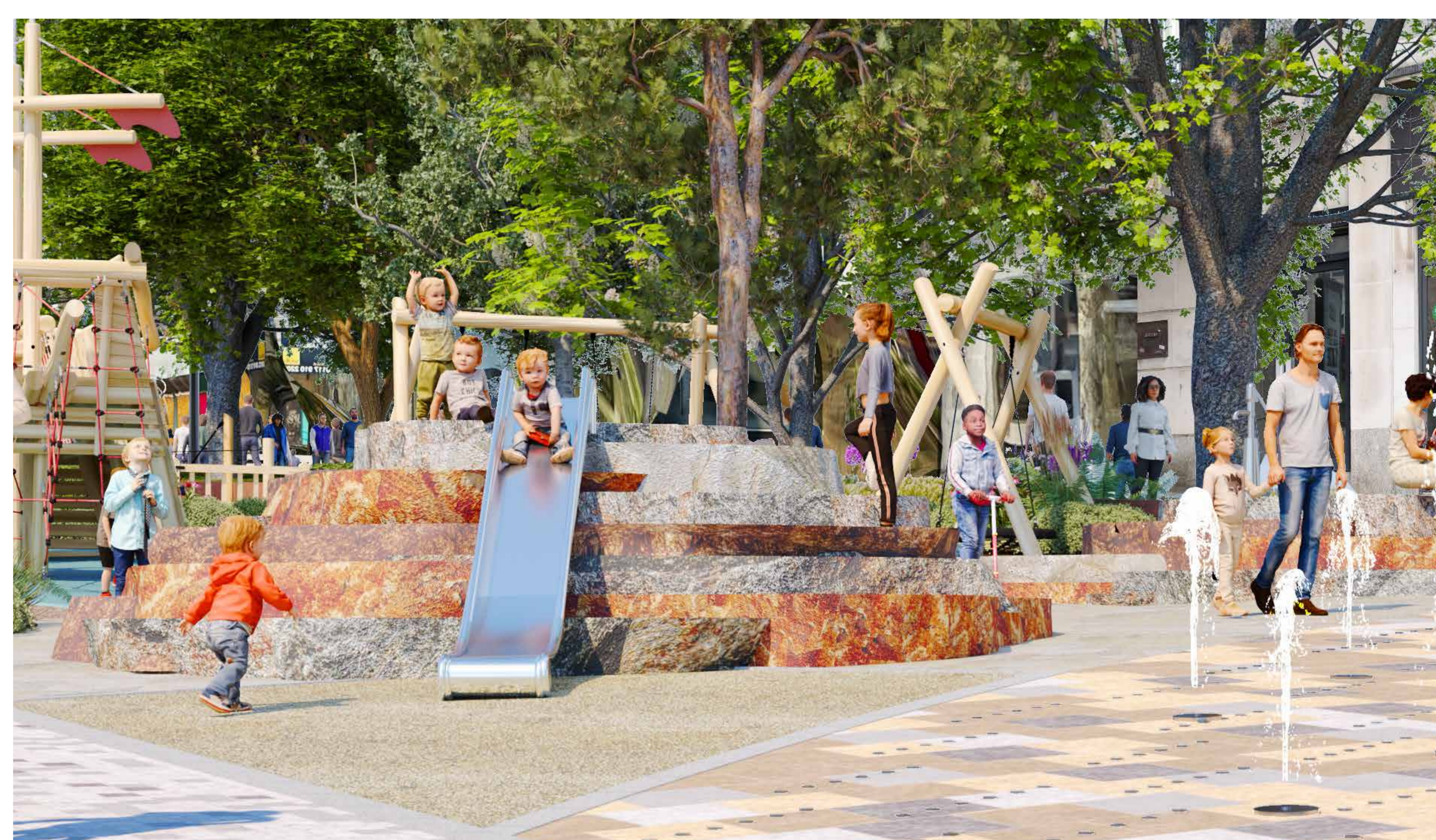
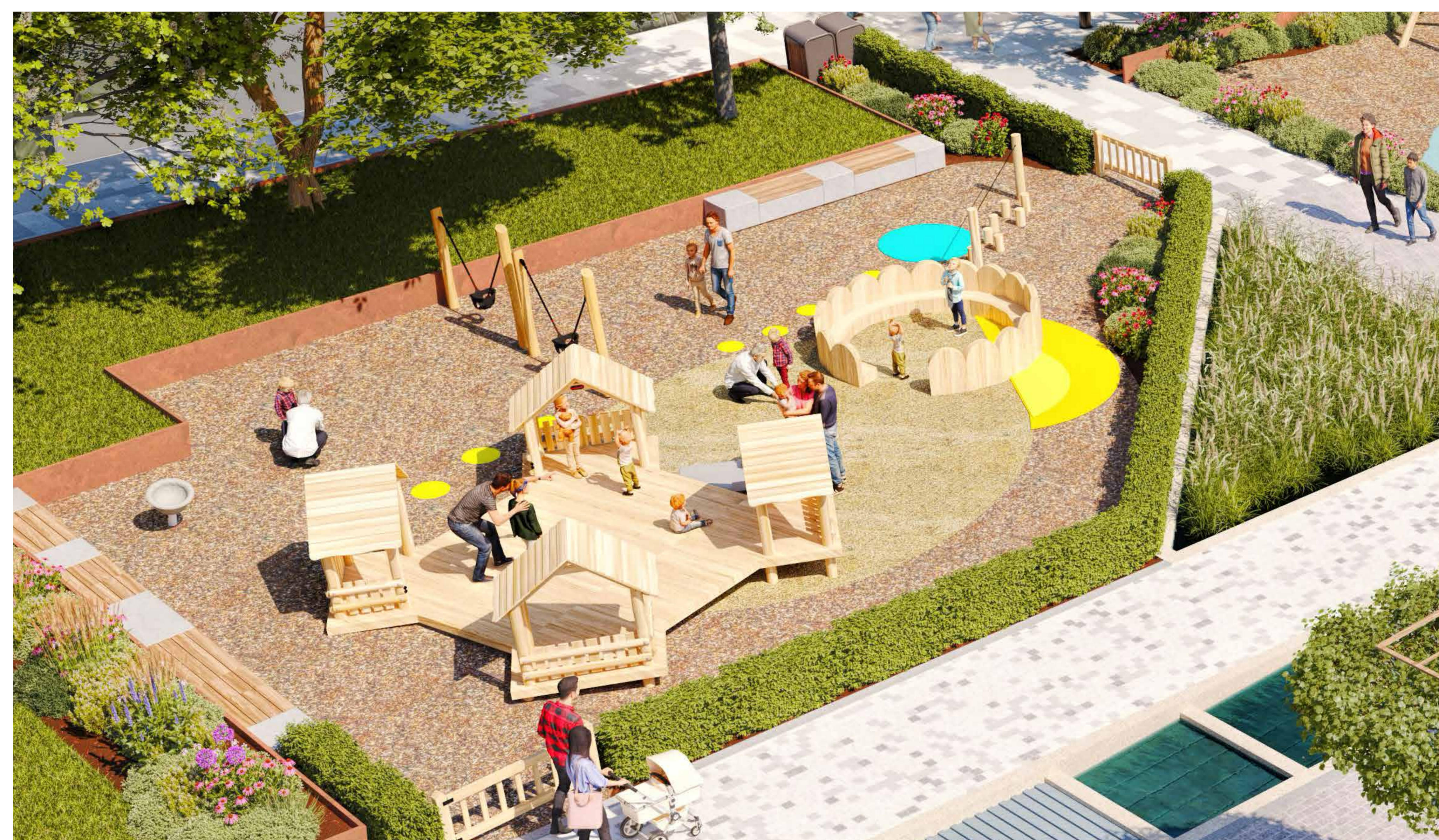
We're also holding specific workshops with families, people with disabilities and elderly people.

Representatives of stakeholder groups are also being invited for 1-2-1 interviews.

We have also emailed Plymouth groups, organisations and forums to ask them to distribute information throughout their networks.

If you would like information in other languages or Easy read, please email us at info@letstalkarmadaway.co.uk or call 01752 946604.

We want to hear from as many different people and groups as possible, to make sure there is a representative range of feedback to help shape the proposed scheme for Armada Way.



Have your say

17 October - 28 November 2023

GO TO <https://letstalkarmadaway.co.uk> to find out more

SCAN the QR code to visit the website and complete our survey

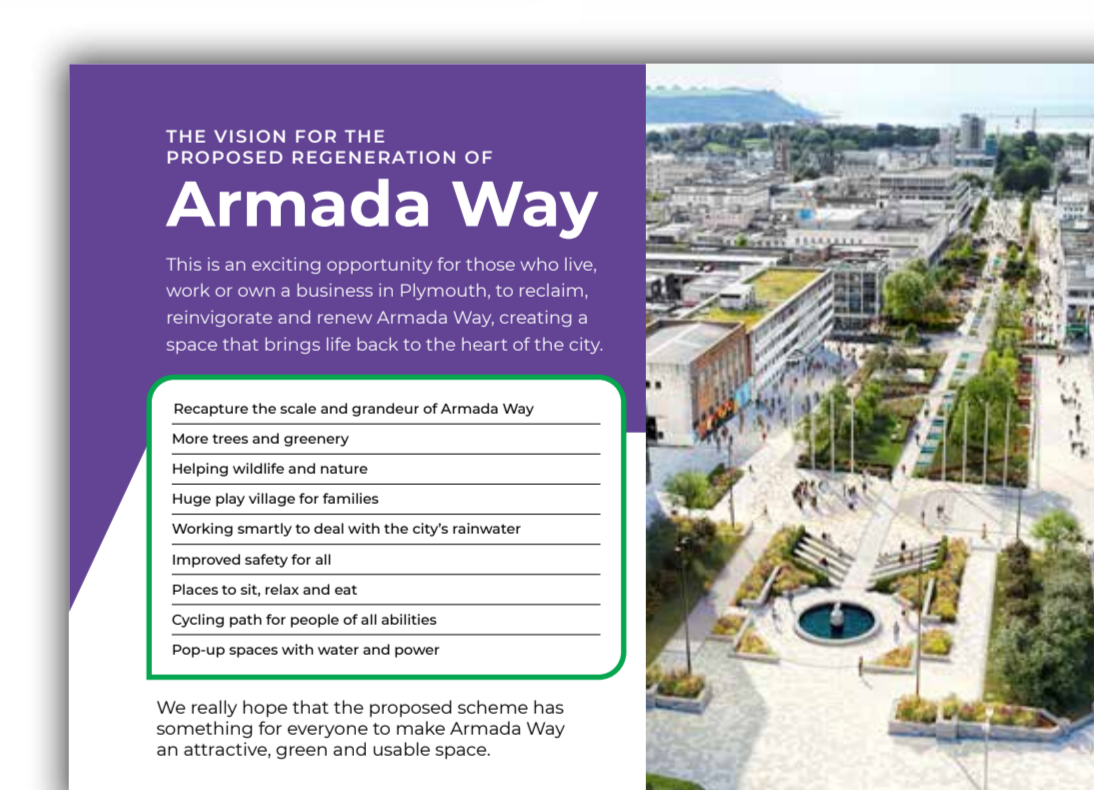
TALK to one of our on-street team (wearing purple Let's Talk Armada Way tops)

VISIT one of the local businesses on Armada Way to pick up a postcard with the QR code

VISIT Central Library, 167-171 Armada Way, Plymouth, PL1 1HZ, to pick up (and return) a hard copy survey

EMAIL us at info@letstalkarmadaway.co.uk

CALL us on 01752 946604



Why do we need to regenerate Armada Way?

Shopping habits and how people want to use public spaces are changing and city centres such as ours need to evolve and adapt.

Over recent years Armada Way has seen a serious decline in footfall, with many empty shop units. It has features that are in dire need of repair and haven't been updated since the 80s. There are areas that are unusable or inaccessible, with growing concerns over public safety, which have resulted in virtually no night-time economy.

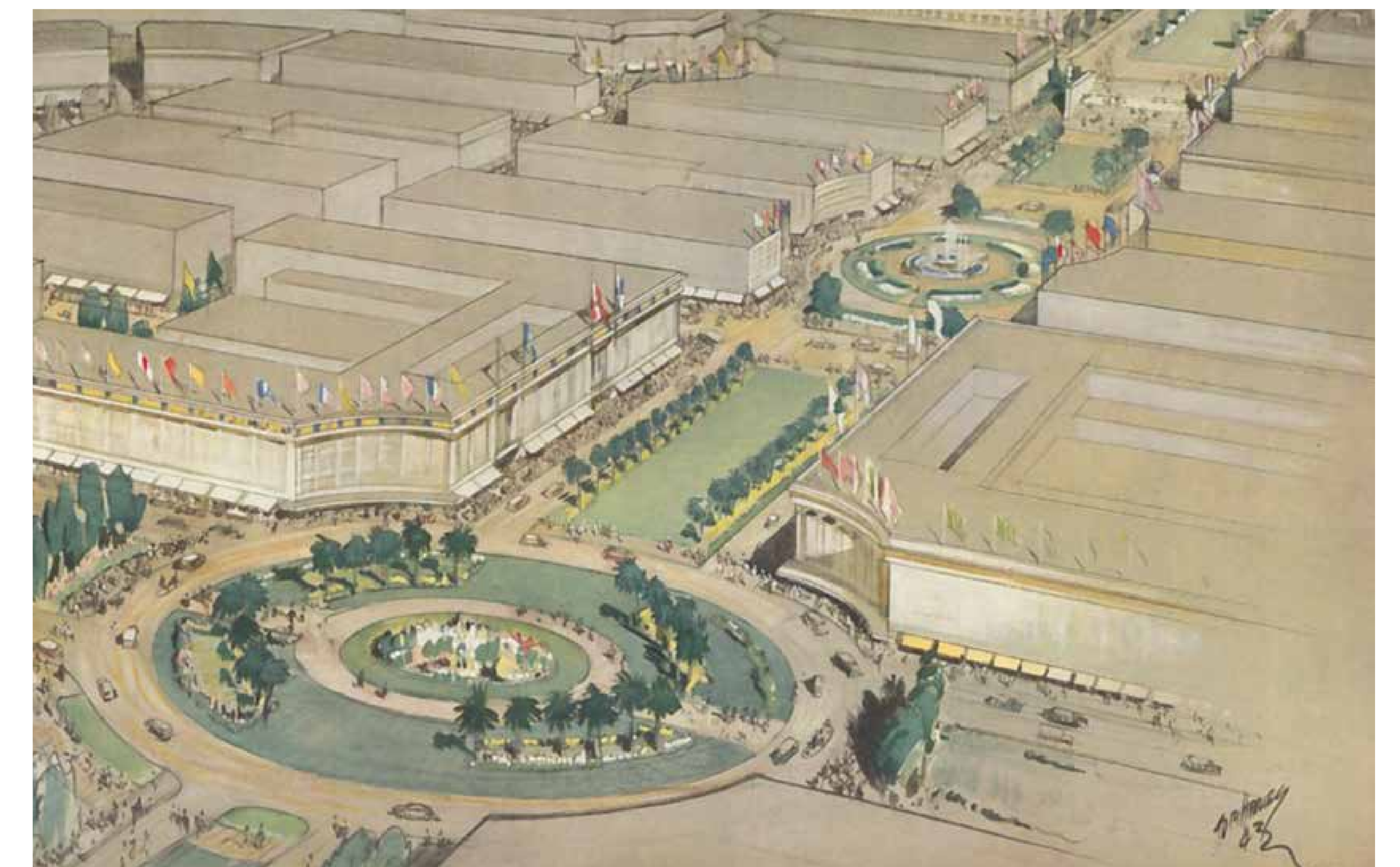
The area is dated, run-down and in serious need of investment.

Our ambition is to bring a large amount of residential development into the centre, giving new leases of life to tired, vacant buildings, encouraging more people to dwell in and use the city centre both during the day and at night.

The current Armada Way does not encourage investment or inspire confidence from developers.

Plymouth City Council wants to change this and feels that Armada Way deserves investment to put it on a similar footing to other major city centres across the country.

To find out more about the history of Armada Way, go to: <https://www.plymouth.gov.uk/aw-history>.



“ We have permitted ourselves the one monumental feature of the whole of Plymouth rebuilding – a great view seen from the forecourt entrance, across the shopping and civic centre to the Naval War Memorial on the Hoe...the vista will be the visitors guide.”

A PLAN FOR PLYMOUTH
ABERCROMBIE AND WATSON 1943

What will happen to the findings?

This is a process where a wide range of feedback is being gathered to help shape the decision-making process around Armada Way.

What will happen to the consultation findings?

The independent consultation and engagement partner, ECF, will analyse all feedback and will write a consultation report. The report will then be presented to the Council, after which there will be a period of 'conscientious consideration' for councillors and officers to decide how the findings will shape the scheme.

Once a final scheme is ready, the design will be submitted to the Growth and Infrastructure Overview and Scrutiny Committee for consideration, along with the consultation report. The Council's Cabinet will then consider the design.

As this is being carried out under Permitted Development, it does not need to go to a Planning Committee, however it will be scrutinised by members of the Overview and Scrutiny Committee and the Cabinet.

That decision process will then be shared on the consultation website and emailed to all that have registered an interest.

How will people be able to read the findings?

If you have registered an email as part of the consultation process, you will be sent regular updates about the scheme. The Council will also continue to work with local groups and organisations so that they can share information with members in their networks. The Council will also post updates on its website and across social media channels.

The final consultation report will be published online and as part of the decision-making process.

The report will be shared with everyone that has registered and will be posted on the <https://letstalkarmadaway.co.uk> website.



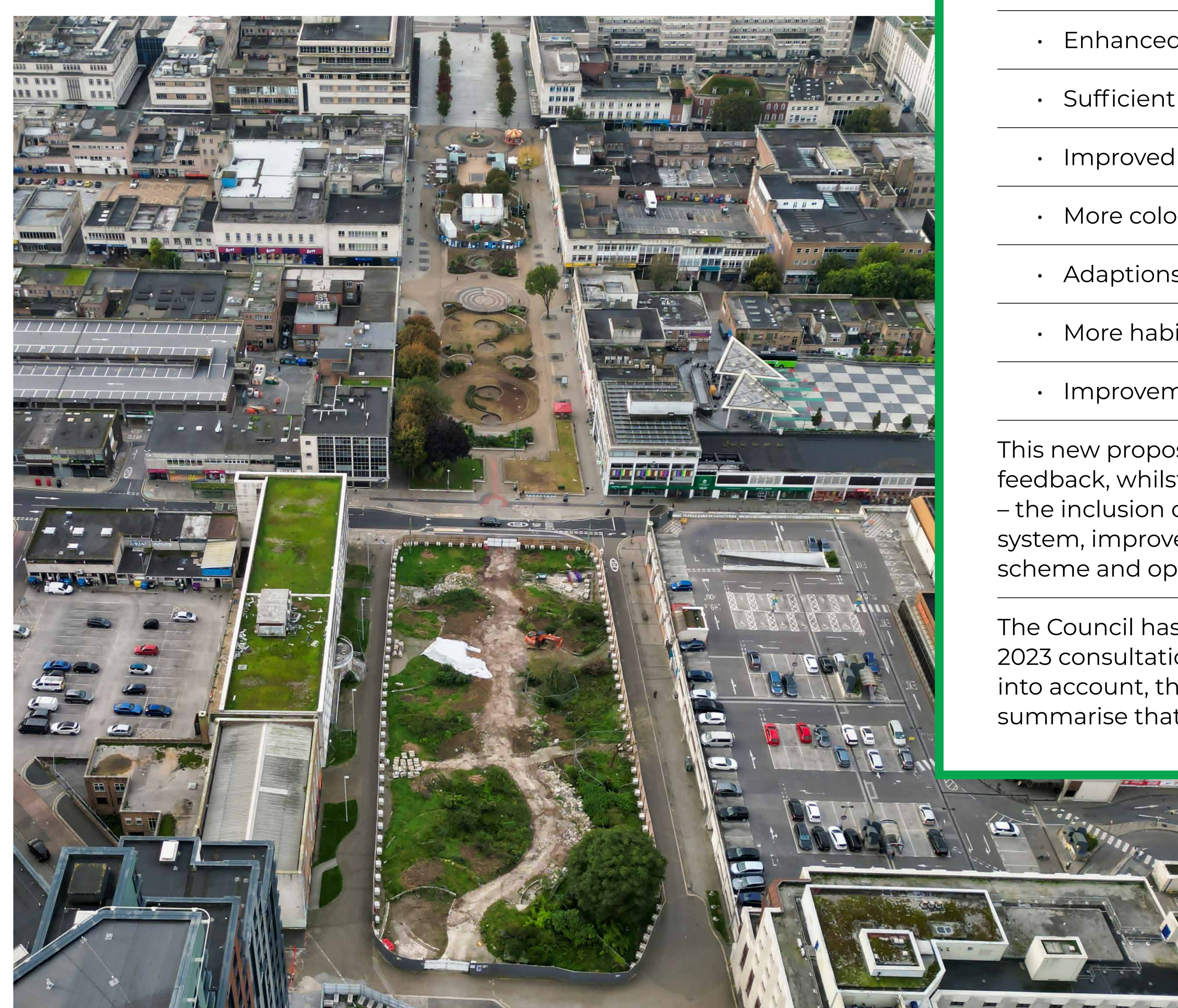
Where are we now?

We understand the depth of feeling surrounding the previous Council Leader's decision to fell the trees on Armada Way and we are trying to move forward and create a city centre we can all be proud of.

On 19 May 2023, the new leader of Plymouth City Council, Councillor Tudor Evans OBE, set out his firm intention to rescue, reinvigorate and renew the city centre and reunite a divided city. Within hours of becoming the Leader he overturned the original decision in relation to the scheme and asked officers to come forward with new options to regenerate Armada Way.

For more information about the history of this scheme, the previous decisions – including the felling of the trees and current legal action, go to: www.plymouth.gov.uk/armada-way

The felled trees have been removed leaving a large space and now we need your input into the proposed new scheme for Armada Way, to make sure it's shaped by those who will use it.



The Council is not starting with a blank sheet of paper to create the proposed scheme.

We have listened and taken on board previous feedback (including concerns expressed about felling of any of the existing trees), and are now we are presenting a scheme that has been revised to incorporate more trees and greenery, more recreational space, a large play space, improved pathways for walking and cycling and to ensure it has a sustainable lifespan.

The new scheme has been designed taking into account feedback from a number of engagement exercises starting in 2018 as part of the Better Places consultation, through to Spring 2023.

A consultation was held regarding the previous scheme in February 2023.

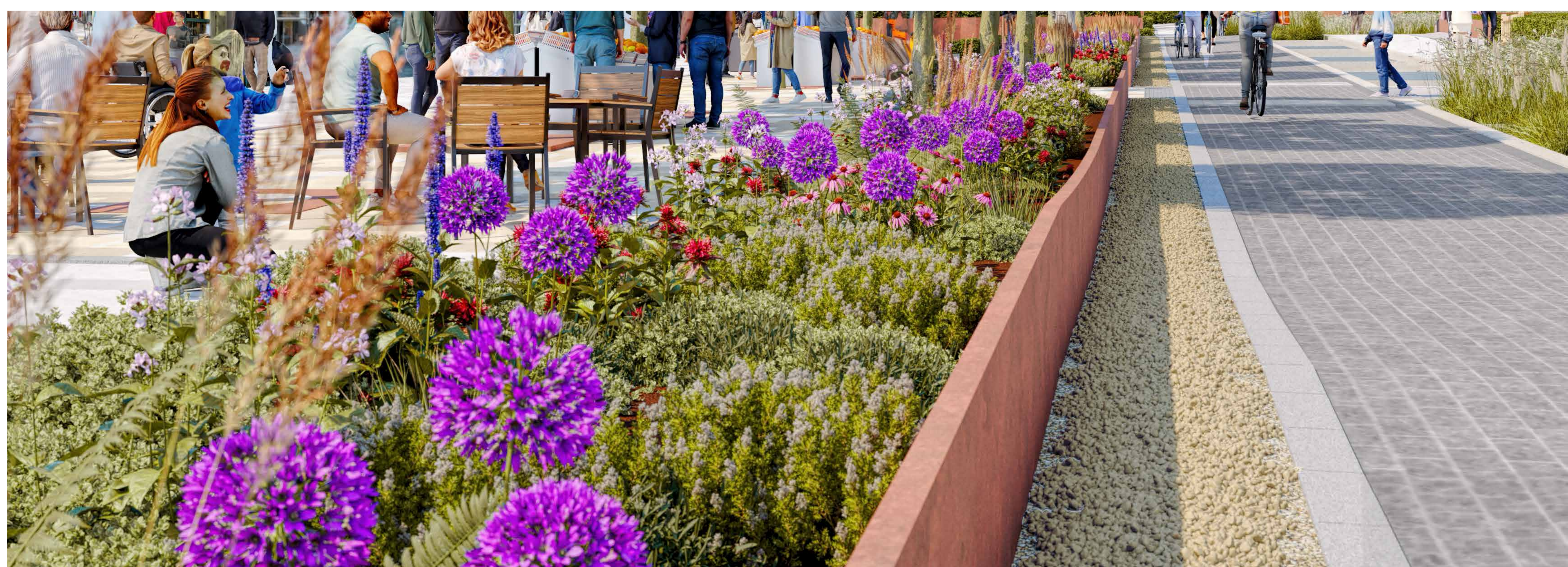
Feedback from that consultation included:

- Retain all (or at least many more) of the existing trees
- Enhanced lighting
- Sufficient supportive seating
- Improved / more CCTV coverage
- More colour to balance the grey of the city centre
- Adaptions to the cycle lane and cycle provision
- More habitats for wildlife
- Improvements to play and active features.

This new proposed design takes account all of this feedback, whilst keeping the key drivers for the scheme – the inclusion of an enormous surface water drainage system, improvements to accessibility, a new central cycle scheme and opening up Armada Way vista to The Hoe.

The Council has assessed the feedback from the February 2023 consultation directly and not referred to, or taken into account, the final written report that was produced to summarise that feedback.

A commitment to nature and greenery



Nature is at the heart of the new scheme. It aims to achieve a biodiversity net gain of 20 per cent, meaning that it will positively support wildlife in the city centre.

How many trees will be planted in the proposed new scheme?

It is proposed there will be a total of 202 trees in the North of Armada Way (between Royal Parade and North Cross Roundabout) compared to 153 before the felling this year. In addition to this scheme, we are currently working on plans for a separate new urban-forest project (a small, dense patch of trees planted closely together). This would be an additional 147 trees planted in the south of Armada Way (outside the Crowne Plaza) and would form part of the new administration's pledge to increase tree canopy cover across the city centre. Detailed information regarding the proposed urban-forest outside the Crowne Plaza will be published when this project is further developed.

Following the regeneration, should both projects be delivered, there will be total of 349 trees on Armada Way.

What size will the trees be?

All the trees planted will be at a height of 3.5 to 8 metres and will be selected for their suitability for an urban landscape.

What types of trees will be planted in the proposed scheme and why?

Following feedback from local environmental groups, we are looking at a diverse mix of UK native and ornamental trees. The species have been carefully selected for their resilience to disease and climate change, they are also less likely to suffer in future from stress and sporadic growth from the base of the trunk. Trees with foliage to ground level have not been used to allow better views and sightlines through the scheme.

They include Field Maple, Alder, Gold and Himalayan Birch, Scots Pine, Love Tree, Turkish Hazel, Maidenhair Ginkgo, Hornbeam, Carpinus, Callery Pear, Pyrus, Cockspur Hawthorn, Silver Lime, Elm, Silver Birch, Stone Pine, and Norway Maple. You can see more information about the trees we are proposing to plant and their benefits to the environment and nature on the website. We propose to celebrate the trees that we plant and install small plaques with information about each species.

What else is being done to encourage wildlife in the new scheme?

We want the new scheme to benefit nature as much as we can, which is why we want to add more trees and beneficial greenery than were in Armada Way before. In addition to the trees and shrubs, wildflowers will be planted to encourage pollinators like bees. Bug hotels and bird boxes will also be installed throughout to encourage wildlife. Reed beds will provide much-needed natural filtration for the water being recirculated from the drainage system, so that chemicals don't have to be used. This water will maintain the trees and plants, in addition to filling the shallow stream running down the scheme.

How will the trees and plants be maintained?

We have been working with our Street Services team on an enhanced maintenance scheme for the planting and hard surfaces. The trees that we will select, coupled with the fact they will be watered through the sustainable drainage system, should mean they require less maintenance.

What is happening to the existing trees on Armada Way?

We understand the depth of feeling surrounding the previous decision to fell the trees, so we are committed to keeping as many of the existing trees as possible. We are NOT proposing to fell any further live trees on Armada Way.

The 16 trees in the Piazza will remain and be enhanced with their ground conditions improved. There will be 11 existing trees remaining in and around the proposed play area, with two further trees to be retained and integrated into the design near the underground toilets.

However, we are proposing to move (translocate) six trees to enable the installation of the new sustainable urban drainage system, which is much needed to deal with the city centre's rainwater, prevent flooding incidents and help keep our sea cleaner. Some of the trees are also situated on the route of the proposed 12-metre-wide cycling and pedestrian route through the centre, which plays a critical role in opening up the vista to the Hoe.

Unfortunately, one of the trees on Armada Way (the Willow in the hoarded off compound next to the Copthorne Hotel) has died. The tree was midway through being felled earlier this year, when work was halted due to the injunction.

Our independent arboriculturist has carried out an assessment and confirmed that the tree has died and there is no chance of recovery. In addition, it has now become destabilised and the Council has been advised to remove the tree with immediate effect. As the tree is covered by the legal injunction, the Council has petitioned the court to ask permission to remove the tree, as it is now considered a health and safety risk.

What is translocation?

This is the relocation of a living tree – including the roots and the soil around it – moving it from one location to another.

It is generally carried out during the dormant period for trees following their leaf fall in November and involves the excavation and transportation of the tree, complete with its root ball using specialist machinery.

The tree and its root ball are protected during transport, taking particular care not to allow the roots to dry out or get damaged.

The tree and root ball is then placed in a previously-prepared pit slightly bigger than the size of the root ball, the tree aligned to its original north-south orientation and planted to its original depth with supportive compost and additives.

The tree is then guyed to keep it stable in its new location, allowing the new roots to grow and secure it in its new home. The tree is then subject to an intensive care regime, which includes regular watering, weeding and other attention to ensure it performs well in its new home.

Where are the trees currently that are being translocated?

Two are currently located within the hoarded off compound next to the Copthorne Hotel and Armada Centre; a Cockspur Thorn and a Sorbus.. A further Sorbus is located inside the contractor compound, there are two Maples outside the entrance to the Knowledge Hub and a Silver Maple tree outside the former Pound World shop.

Where will the trees be translocated to?

The trees will be translocated and replanted at the new arboretum that is being created at The Park in Plympton. Once there, they will receive significant care and support by expert horticulturalists to ensure the best chance of survival.

Why can't the trees be translocated within Armada Way itself?

For the best chance of survival, translocated trees should be planted in an open green space within a deep pit, surrounded by high quality soil, to help the roots bed in. It is less stressful for a translocated tree if it is located in a natural environment, rather than a harsh urban one. In addition, to stabilise translocated trees in their new homes requires 'guys' (ropes to anchor the trees to the ground). This makes the footprint of each tree very large and is a trip hazard for pedestrians and cyclists.

What happens if we do not translocate the six trees?

Because of the reasons highlighted above, if we do not translocate the six trees then this proposed scheme is not possible.

Will the trees survive?

Translocation is a complex process which is not undertaken lightly and it carries some risk of failure. It is however sometimes used as a tool to move trees away from harm, such as locations subject to development or to correct the location of a tree from being in the wrong place.

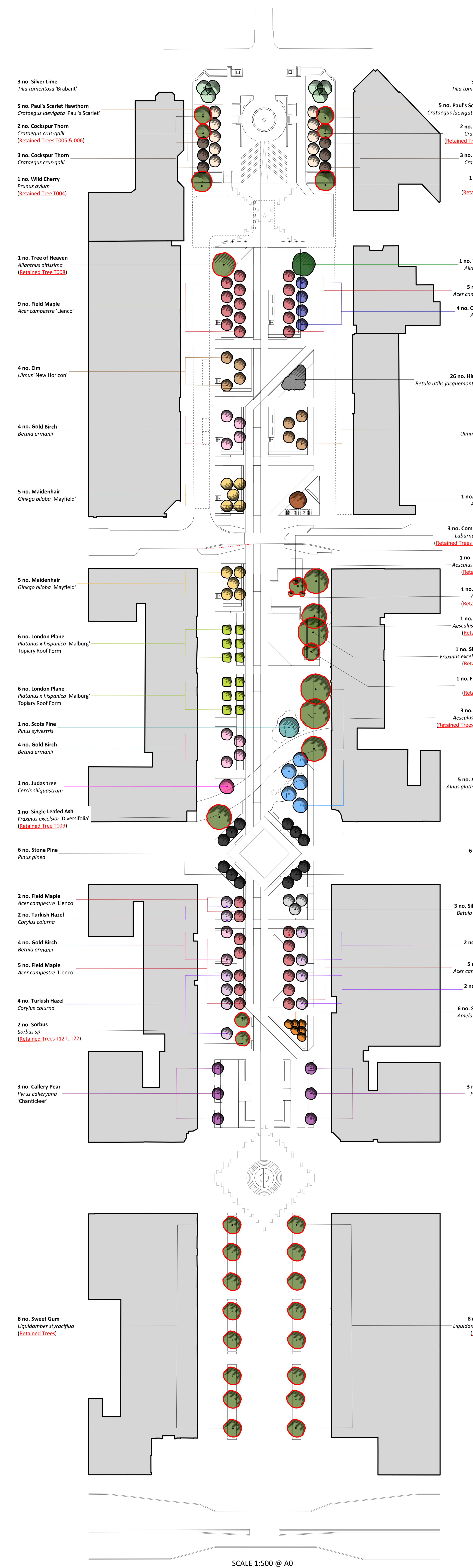
For more information on translocation, please see our fact sheet on the website.

The aim is to make Armada Way a greener and nature friendly space.



Where will the trees be on Armada Way?

A pdf of this plan can be downloaded in the nature and greenery section of the website.



PROPOSED NEW TREE SPECIES

Spring/Summer	Autumn	Species Name	Quantity	Notes
		Field Maple <i>Acer campestre 'Linceo'</i>	27 no. specimens	Specimen Girth: 25-30cm Approx Height @ Planting: 5m
		Tree of Heaven <i>Alnus glutinosa</i>	1 no. existing retained in situ, 1 no. addition	Specimen Girth: 40-45cm Approx Height @ Planting: 6.5m
		Common Alder <i>Alnus glutinosa</i>	4 no. specimens	Specimen Girth: 25-30cm Approx Height @ Planting: 5m
		Alder Impatiens <i>Alnus glutinosa 'Impatiens'</i>	5 no. specimens	Specimen Girth: 25-30cm Approx Height @ Planting: 5m
		Snowy mespilus <i>Amelanchier lamarckii</i>	6 no. specimens	Specimen Girth: 25-30cm Approx Height @ Planting: 5m
		Gold Birch <i>Betula ornata</i>	10 no. specimens	Specimen Girth: 25-30cm Approx Height @ Planting: 5m
		Silver Birch <i>Betula pendula</i>	3 no. specimens	Specimen Girth: 40-45cm Approx Height @ Planting: 6.5m
		Himalayan Birch <i>Betula utilis jacquemontii 'Doorenbos'</i>	26 no. specimens	Specimen Girth: Feathered Approximate Height @ Planting: 1.75m
		Scots Pine <i>Pinus sylvestris</i>	1 no. specimen	Specimen Girth: 45-50cm Approx Height @ Planting: 7m
		Judas Tree <i>Cercis siliquastrum</i>	1 no. specimens	Specimen Girth: 25-30cm Approx Height @ Planting: 4m
		Turkish Hazel <i>Corylus colurna</i>	10 no. specimens	Specimen Girth: 25-30cm Approx Height @ Planting: 4.5m
		Maidenhair <i>Ginkgo biloba 'Mayfield'</i>	10 no. specimens	Specimen Girth: 40-45cm Approx Height @ Planting: 6.5m
		London Plane <i>Platanus x Hispanica 'Marburg'</i>	12 no. specimens in topiary roof form	Specimen Girth: 20-25cm (1.5-4m high) Approx Height @ Planting: 3m to 4.5m
		Callery Pear <i>Pyrus calleryana 'Charicleer'</i>	6 no. specimens	Specimen Girth: 40-45cm Approx Height @ Planting: 6.5m
		Cockspur Hawthorn <i>Crataegus crug-galli</i>	4 no. existing retained in situ, 6 no. addition	Specimen Girth: 25-30cm Approx Height @ Planting: 4.5m
		Paul's Scarlet Hawthorn <i>Crataegus laevigata 'Paul's Scarlet'</i>	10 no. specimens	Specimen Girth: 25-30cm Approx Height @ Planting: 5m
		Silver Lime <i>Tilia tomentosa 'Brabant'</i>	6 no. specimens	Specimen Girth: 40-45cm (low branching) Approx Height @ Planting: 6.5m
		Elm <i>Ulmus 'New Horizon'</i>	8 no. specimens	Specimen Girth: 25-30cm Approx Height @ Planting: 5m
		Stone Pine <i>Pinus pinea</i>	12 no. specimens	Specimen Girth: 25-30cm Approx Height @ Planting: 5m
		Norway Maple <i>Acer platanoides</i>	1 no. existing retained in situ, 1 no. addition	Specimen Girth: 40-45cm Approx Height @ Planting: 4.5m

Total Trees = 202 (Including 37 no. existing retained)

Working smartly to deal with the city's rainwater

We have devised a smart and sustainable way to deal with our city's rainwater to guard against flooding and provide water for the plants and trees.

What is a SuDS and why is it important to include it in Armada Way?

We want to create a SuDS (sustainable urban drainage system) to manage all surface water which falls on Armada Way, mimicking where possible, a natural drainage system. This will involve the use of rain gardens and underground storage tanks which will fill with rainwater after being filtered through natural reed beds instead of using chemicals. The water will be recirculated around Armada Way through an ornamental stream which will run along the length of the proposed scheme. The water will be used to irrigate the trees day and night. Through this process, we will reduce the strain on the combined sewer system, clean our surface run off and reduce discharge events into Plymouth Sound. The system is more climate resilient as it is designed to handle extreme weather events and is considered critical and best practice for handling urban water run off by the Environment Agency and South West Water.

Why can't the old drainage system remain?

The old drainage system is showing its age. It is a post war combined sewer system – surface and foul water – that was never really designed to deal with the capacity it currently has to cope with, given the demands of modern plumbing in residential and commercial properties.

The SuDS system is not replacing the old drainage system but takes pressure off it as it is diverting rain and surface water away from the current drainage system. We will also be working with South West Water to help upgrade sections of their system in Armada Way at the same time.

The work will also entail the creation of an underground trench running the length of Armada to enable districting heating infrastructure to be retro fitted.

How will the SuDS be powered?

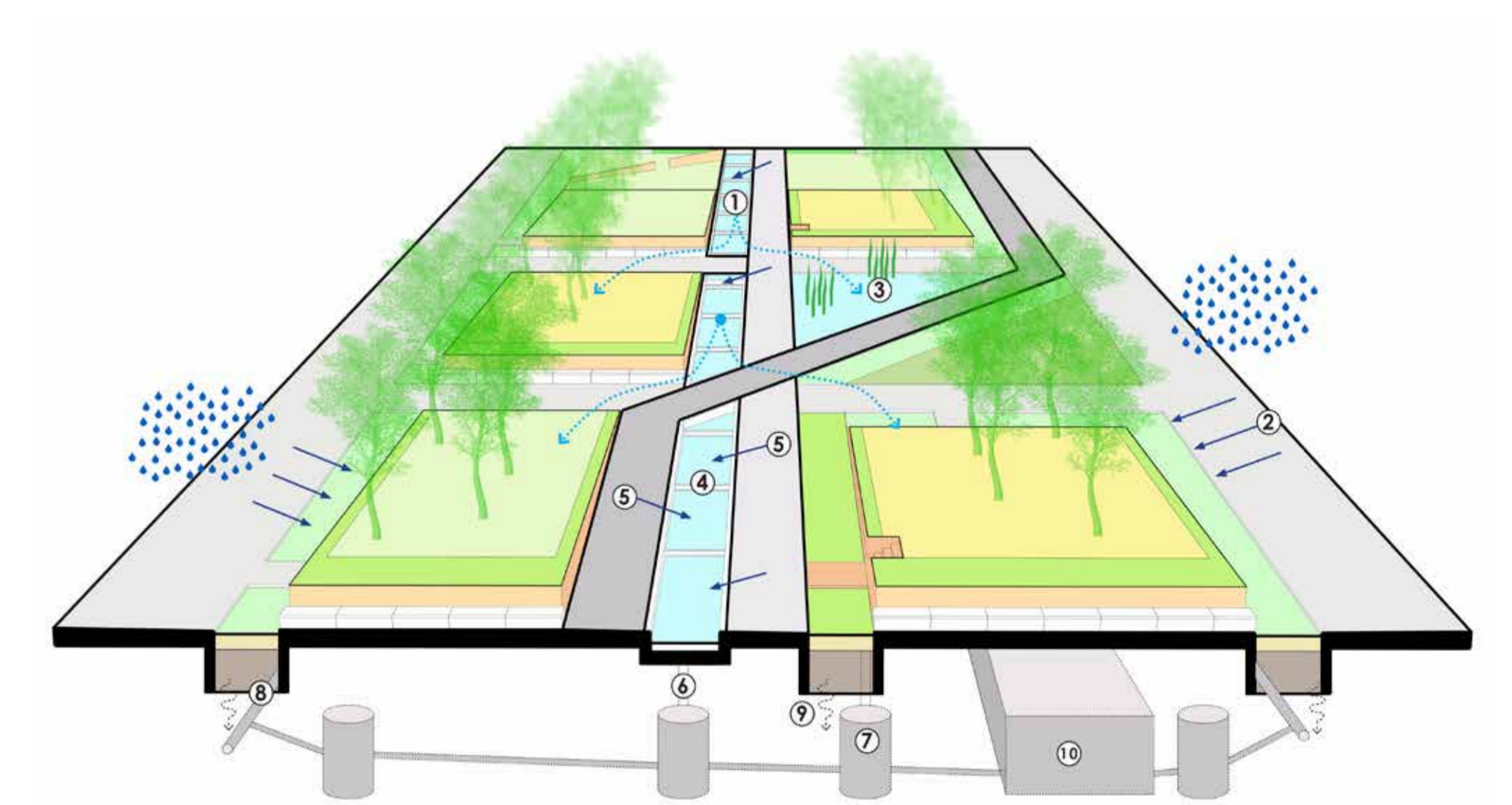
It will be powered by solar canopies that will be based at Place de Brest and on either side of the toilets. Power will be stored in huge batteries, underground. The system also has an emergency 'back-up', linking to the main power-grid, in case not enough power is generated by the sun. The use of solar power will also help the Council with its Net Zero aspirations.

The system will provide a sustainable way to utilise our city's rainwater.

What benefit will the SuDS bring?

The sustainable urban drainage system has a number of benefits for the proposed new trees, for the city centre and for Plymouth Sound. It:

- Reduces maintenance and watering costs: The system uses rain gardens which will be installed beneath the ground level, which combine with large underground storage tanks, and will retain rainwater that can be used to feed the plants and trees above the ground.
- Reduces the amount of rain and foul water that ends up in the Sound: The system will ensure that rain and surface water will not go into the existing combined sewer system.
- Frees up capacity in the existing combined sewer system: Reducing the risk of flooding in the city centre.



1. Rill (small stream) to supply irrigation to green areas and trees
2. Ground level swales/raingardens that will take surface water from paths, reducing flow to the sewer system
3. Reed beds to filter the water naturally from the rill
4. Rill sections – reusing existing granite from the current Armada Way to form the base of the rill, with regular flat sections that will drop, like the natural gradient of Armada Way.
5. Surface water from the pathways and cycle path will run into the rill.
6. Connections to the rill and the huge tanks that are currently under Armada Way, enabling the recirculation and smart use of water
7. Swales / raingardens will also connect to underground tanks, allowing storage of additional water during extreme rainfall
8. Water will seep through the raingardens, clearing any pollutants, providing clean water back into the system.
9. Some of the rain gardens will capture surface water and will slowly distribute it into the ground.
10. Example of existing underground holding tank, which will store rainwater from all the above, and pump it back into the rill and will water the trees. UV filters within the tanks will provide further cleansing of surface water. When one tank is full, the system will start using the next tank further down Armada Way.

Mixed use cycle path and mobility hub

The aim is to encourage more cycling to and in Armada Way, giving people the space they need and a place to store their bikes.

How will cyclists and pedestrians use the paths?

The cycle path has been designed to assist cyclists of all abilities by giving them a safe route through Armada Way and includes measures to slow cyclists down in steep areas where they would otherwise be likely to build up speed.

in areas where the cycle path crosses over the pedestrian footway, cyclists will need to slow down and give way.

The path will also be signed and waymarked to help pedestrians and cyclists understand how to travel through safely.

We will be undertaking training and education, particularly with local delivery companies, around how to use the new cycle lane in harmony with pedestrians.

How wide will it be?

The proposed new path is over 2.5 metres wide between kerb lines, making it wider than the path proposed in the previous scheme.

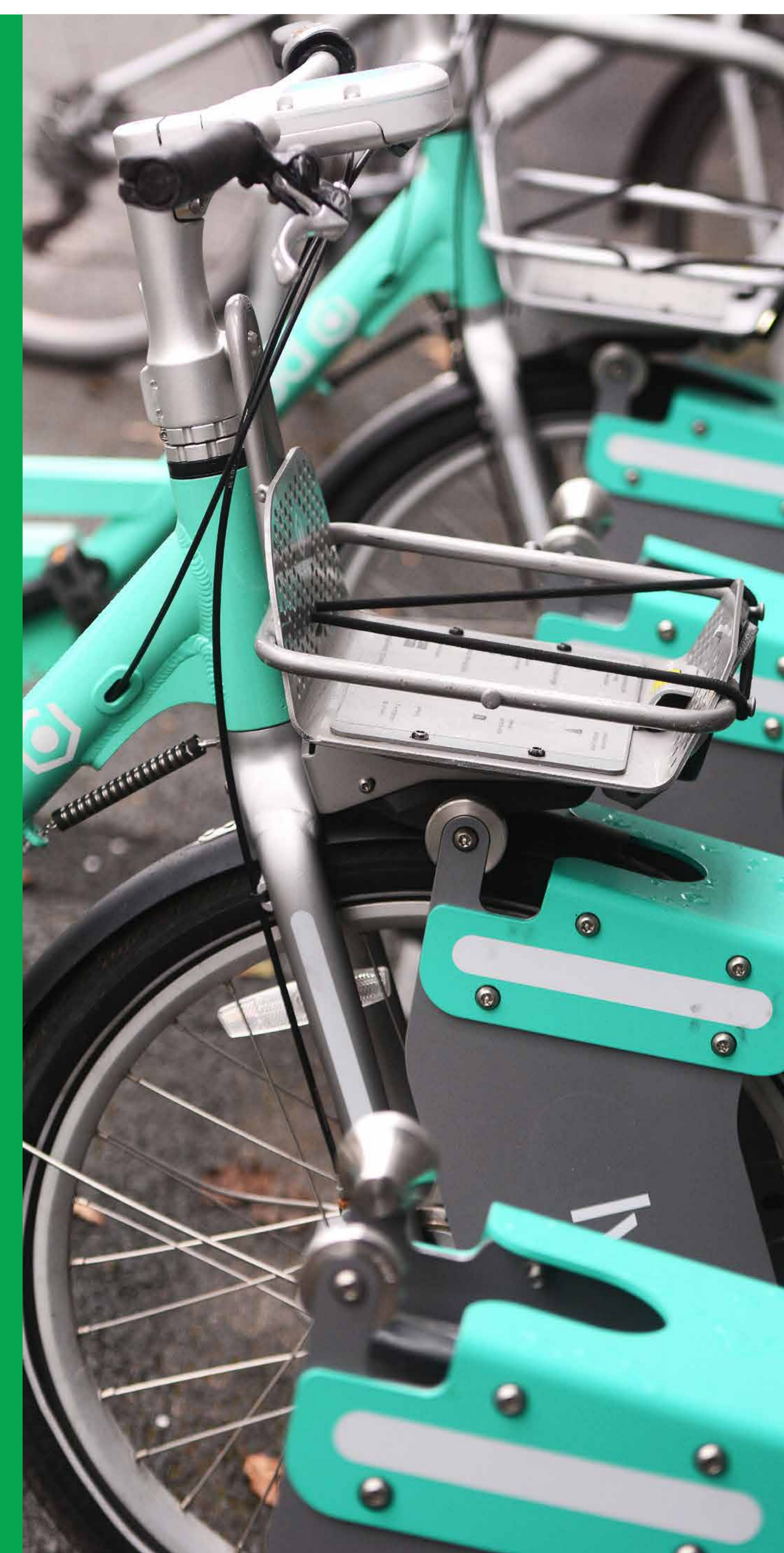
Who has assessed the cycle path?

It has been assessed by AECOM and Sustrans and is LTN 1/20 compliant (see the FAQs on the website for more information).

What would the 'mobility hub' include?

There will also be covered cycle racks and a mobility hub, where Beryl Bikes will be located for people to hire, plus potentially a drop-off and pick-up point for delivery cyclists.

The aim is to give people the space to ride their bikes and a safe place to store them, encouraging more active travel in the city centre.



A destination play village to attract families into the city centre

The aim is to provide a free local play space for families with children of all ages, so that then can shop, sit, relax and play.

How big is the proposed play village?

The proposed scheme features a destination play village at the heart of the city centre at a staggering 1,120 sqm in size – the equivalent to nearly five tournament tennis courts, making it one of the largest city centre play spaces in the country!

Why does the scheme include a play village?

It is hoped that the proposed play village will give people a local and convenient option for entertaining their children for free and will therefore encourage more families into the city centre and onto Armada Way, while supporting local businesses at the same time.

What will the proposed play village contain?

It will be space for children of all ages, with a separate, secure toddler play area. Young explorers can climb, swing, balance, run through water jets and build imaginary worlds in the natural habitats of the 'play village'. There will also be plenty of seating throughout.

A sensory play zone will be located within a quiet area for those children that appreciate it and accessibility will be a key element of the design for those with disabilities. The public toilets nearby will be enhanced, and we will seek to install new baby change rooms and disabled facilities. Some of the historic chess boards from the original Braille Garden will also be repurposed and positioned with new seating across from the play space, to give a grown-up recreational area.

How will families help to shape what is in the play village?

We are surveying people and asking for their feedback regarding the play village and, in addition, we're holding workshops with children and adults to understand how they might use the space and what else should be taken into account with its design.

The play village will benefit local families, visitors and businesses along Armada Way.



Spaces to relax, shop at or be entertained!

The proposed scheme also has a number of spaces that are flexible for people to use, and pop-up spaces with water and power to host markets, live entertainment and art.

What are the 'pop-up spaces' in the new scheme?

It is proposed there will be a couple of additional places which could be used for concessions, live events or other pop-up activity. These are located at the proposed amphitheatre on the north piazza just down from the restored Phoenix Fountain, and under the proposed solar canopies at Place de Brest and near to the Sundial. Importantly these spaces will have power and potentially water supplies.

How will they be used?

They could be used in a variety of ways including street traders, theatre companies or musicians. We're gathering feedback with ideas on how these could be used as part of the consultation.

What will happen to the street traders that are currently on Armada Way?

Street traders will be able to trade in Armada Way. Some adjustments may have to be made while work takes place. However, we are exploring more power points for traders as part of our improved multi-use spaces. We are keen to have more traders

What are the flexible spaces?

Throughout the proposed scheme there are areas that haven't been set aside to serve a particular purpose, these are referred to as 'flexible spaces'. These are a mix of lawned, seated or hard standing areas.

Why are they included?

They are included so that there are some areas where people can just relax, picnic, play sports or just sit. We're asking for feedback on how these might be used during the consultation.

How many seats will be included in the proposed new scheme?

It is proposed that the scheme will include seating for around 500 people, in various styles.

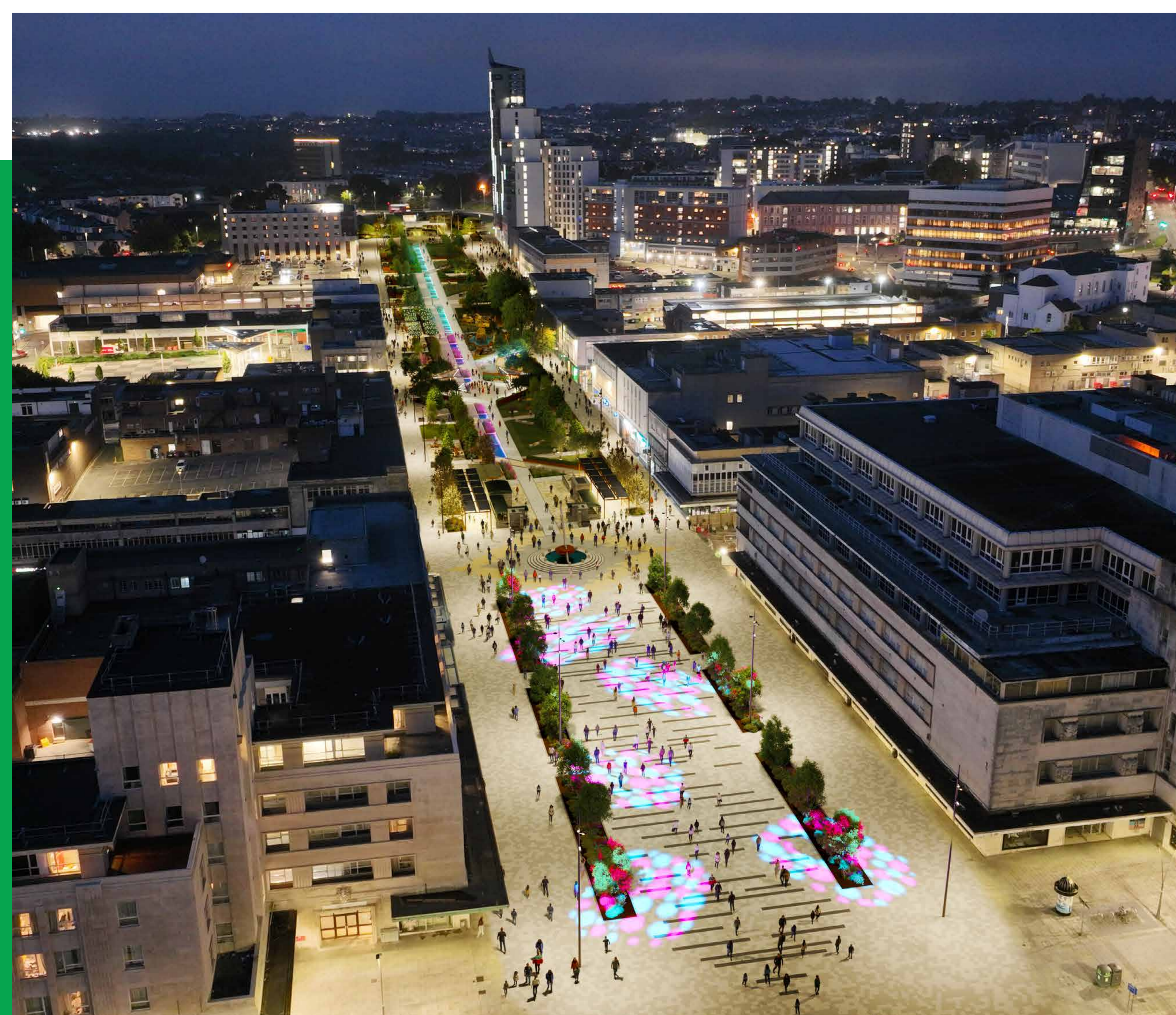
What style of seating will there be and where will it be placed?

There will be a mix of high-backed seats with arms, benches, seats with tables, lower seating for children. There will also be seating at the amphitheatre area at the north of Armada Way. The seating will be placed throughout the scheme and through the consultation we're asking for feedback about styles and locations.

Will there be any shade from the sun or cover from the rain?

Many of the 202 trees on Armada Way will grow to have expansive canopies that will provide shelter throughout, as well as the proposed solar panels at Place de Brest and around the toilets. The tops of London Plane trees (outside the area near Oggy Oggy) will join together to form a new umbrella cover for people to sit under.

The flexible and pop-up spaces, with plenty of seating throughout, offers the opportunity to use Armada Way for recreation and entertainment all through the year.



How are you ensuring that the scheme is accessible for older people and people with disabilities?

We're reaching out to established local groups and organisations to ask for feedback, in addition to holding a number of workshops with older people and people with disabilities so that they can give more detailed feedback

We hope that the improved lighting and CCTV system, will make Armada Way a safer place for all day and night.

Making it safe, well-lit and accessible

Anti-social behaviour has been an issue on Armada Way, which has made people avoid the city centre at times, especially at night.

What lighting is included in the proposed new scheme?

The new scheme will include much improved lighting at 12 and 15 metres high running down the length of Armada Way, to improve safety and lengthen the time people feel happy to spend in the city centre.

There will also be feature lighting projecting patterns and colours onto the ground, in addition to up-lighting on the trees and along the stream and planted areas.

How will the CCTV be improved?

An enhanced CCTV system will also be installed, and the trees will be planted in a way that will enable clear viewing corridors to discourage anti-social behaviour.

In the past, the trees masked the CCTV viewing lines so that shoplifters could not be identified. Other antisocial behaviour occurred under the trees which made some people feel unsafe and discouraged them from the city centre.