

Newsletter



[@ConnectingLeeds](#) [@ConnectingLeeds](#) www.leeds.gov.uk/ArmleyGyratory Connectingleeds@leeds.gov.uk

Project Introduction

Armley Gyratory is a key junction on the Inner Ring Road to the west of Leeds city centre. It is a major entry/exit point for traffic travelling through and into the city with an estimated 100,000 vehicles passing through daily.

Improvements to the gyratory aim to:

- Improve safety for all road users.
- Allow traffic to flow more freely, minimising traffic impacts on local roads.
- Provide more appealing and accessible routes for pedestrians and people who cycle.
- Help facilitate improvements elsewhere in the city, like closing City Square to vehicles.
- Improve the local environment through new landscaping.

This project is part of Connecting Leeds' work on several major highways' schemes, which are all part of transforming travel in the city and across the district.



January 2024- Armley Gyratory looking east towards Leeds City Centre, prior to the Gelderd Road footbridge replacement.



The story so far

Since our previous newsletter in February, phase two of the Armley Gyratory project has continued to progress with the scheme hitting more important milestones.

As the days become milder, the scheme's visual landscaping and appearance has been given an overall upgrade. This included the hydroseeding of an earth retaining wall which will sprout wild flowers and give a more aesthetically appealing look to this area of the Gyratory.



The earth retaining wall at Armley Gyratory

Earlier this month, we also completed a 230m³ concrete pour as part of the preparation works for the new Spence Lane footbridge.



First phase of the concrete pour for Spence Lane Footbridge



This work involved a great deal of planning with suppliers and subcontractors. The advancement in four weeks has been significant and is testament to the team working on site who are also in the planning stages to replace Wellington Street Footbridge in the next and final phase of works as part of the overall Armley Gyratory scheme.



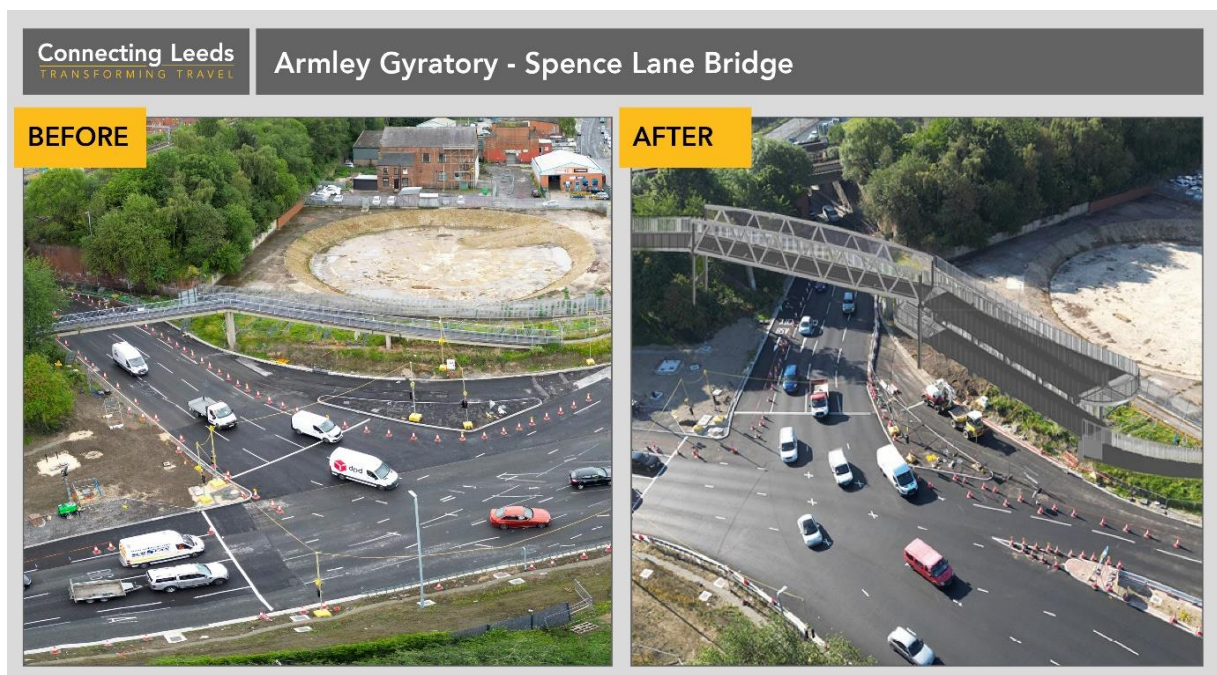
Phase two and three of the concrete pour for Spence Lane Footbridge



All works completed as part of the project will significantly improve accessibility for all non-motorised users through improved access widening and provision of rest areas. The design of all footbridges will ensure minimal maintenance in the future years ahead, further enhancing our commitment to sustainability and longevity.

What happens next?

The installation of the new Spence Lane footbridge will take place under **night closures only** and is set to begin at 8pm on Monday 13 May with erection works planned to end by 10am Sunday 19 May. This will be the second of the footbridges to be completed around the Gyratory with new wider and more accessible footways, after the Gelderd bridge works were completed in April this year.



The new Spence Lane Footbridge spans 32.9 metres long and four metres wide. It will cross over the A643 and provide two new accessible ramps to better meet the needs of non-motorised users and people with disabilities.

There will be road and partial lane closures with diversions in place during construction.

To allow for the transportation, installation and all supplementary works, motorists are advised there will be five night-time closures, from Monday 13 May to Friday 17 May starting daily 8pm until 5:30am.

The A643 northbound carriageway is closed from junction 2 (M621) to the Gyratory. The closure allows for the police escort required for delivery of all ramp sections. There is a diversion of five miles.



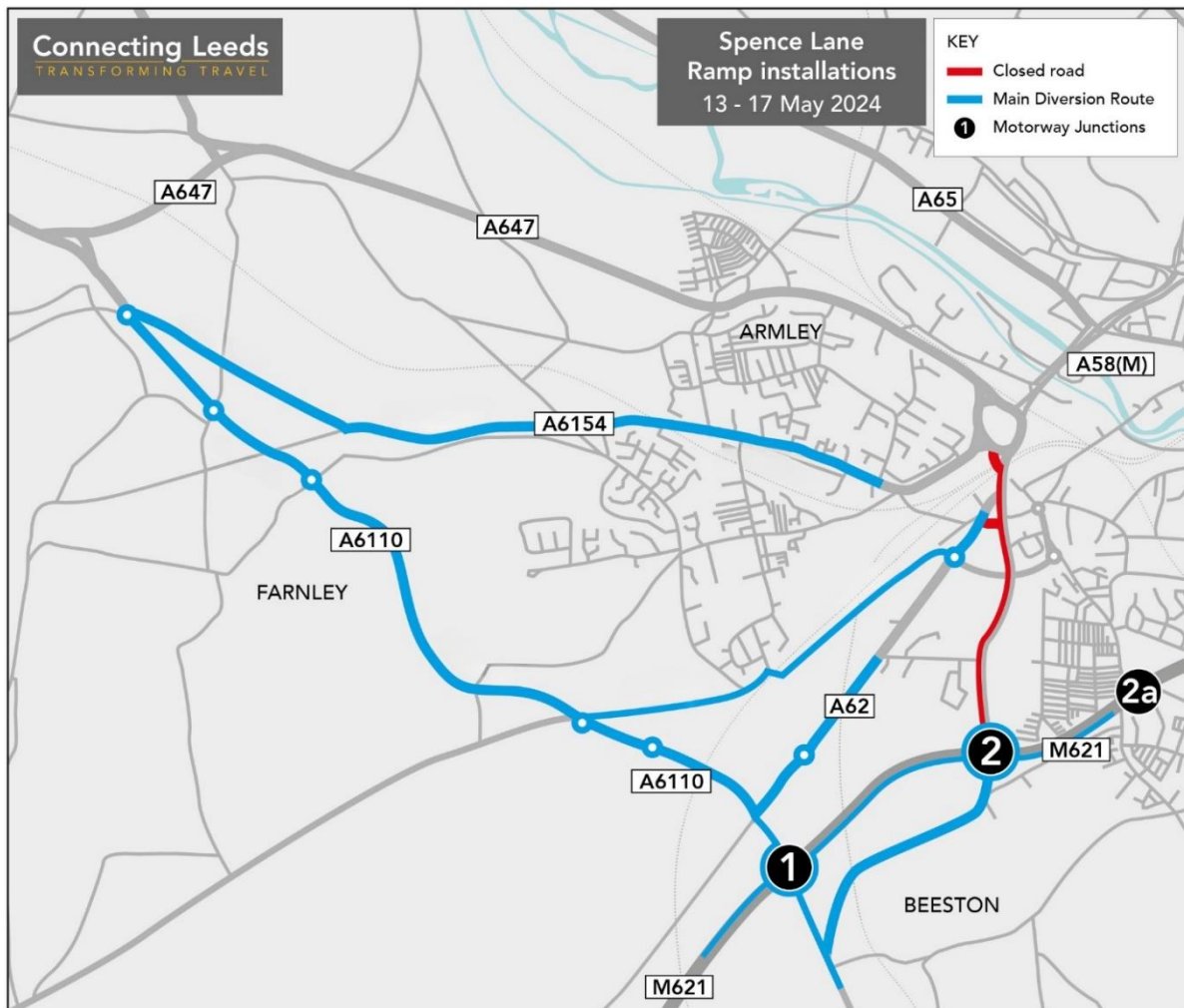
The Spence Lane main span works will take place overnight from 7pm Saturday 18 May to 10am Sunday 19 May.

The A643 northbound carriageway and the gyratory exit to Wellington South will be closed. Traffic will be running in one lane around the gyratory to allow for sufficient working space.

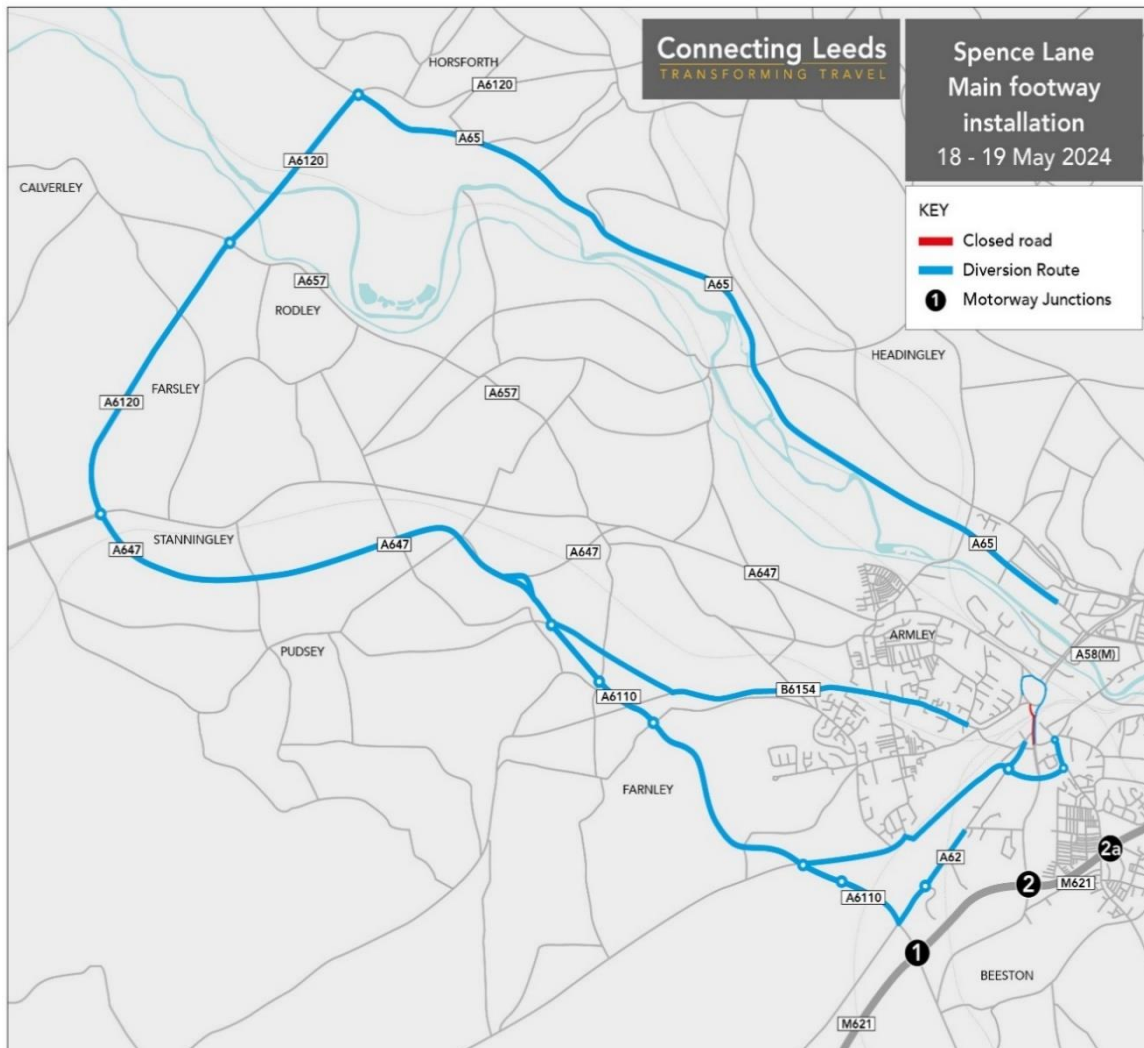
The A643 northbound carriageway is closed at the Wortley Lane junction, with access provided for traffic to Wortley Lane northbound only from Junction 2 (M621). There is an alternate diversion in place to accommodate all classes of vehicles, for example HGVs.

Due to the length of the main span, the delivery of this will be via M621 junction 2. The load will travel north along the A643 northbound carriageway before crossing onto the A643 southbound carriageway. The transport will continue north on the A643 southbound carriageway (against the flow of traffic) until it reaches the Gyratory.

This movement will be fully controlled by the police between 8.30pm – 9.45pm and will require a temporary, short-term closure of the southbound carriageway, dictated by the police, alongside the night closure of the northbound carriageway.



Throughout the night time bridge installation works, a pedestrian diversion route will be in place. Please see the blue route on the pedestrian diversion map.



Following the upcoming works, the green pedestrian diversion route will be in effect until late spring 2024 while works take place finalising Spence Lane footbridge.

The work schedule and activity are weather dependant which could change or delay work taking place.

The current phase two Armley structure programme:

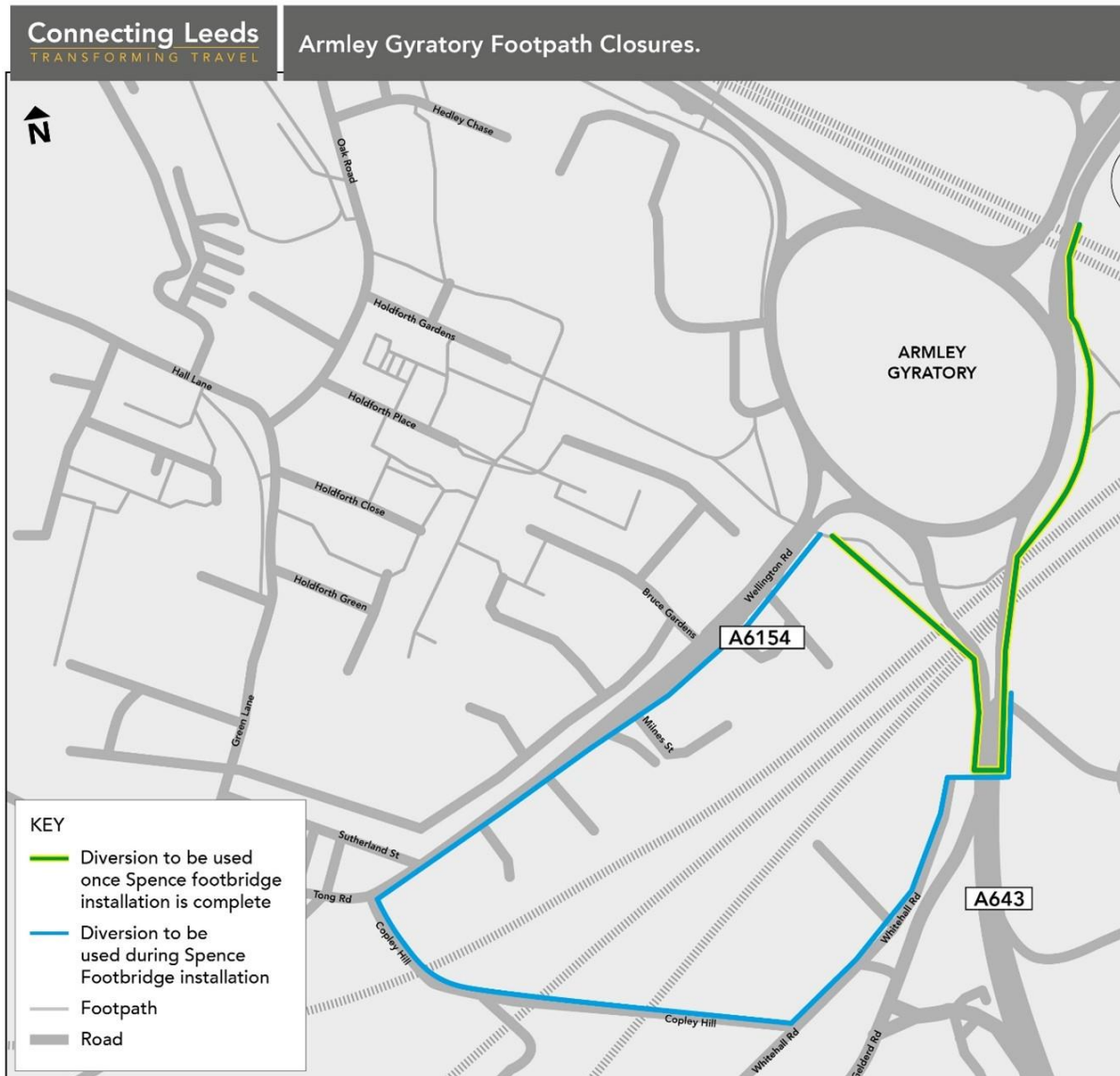
Spence Bridge (2a) Summer 2024 bridge construction completion.

Gelderd Bridge (2a) Spring 2024 bridge construction completion.

Wellington Road Bridge (2b) summer 2024 removal of existing bridge and construction over autumn/winter 2024/25 (*pending final design/approvals).

*A further update will be provided in the next newsletter.





Once completed, we can look forward to the commencement of the final phase, that being the replacement of Wellington Road footbridge (A58) which is currently under detailed design development and planning with a view to both demolition and replacements taking place during 2024/2025.

The on-going works at Armley Gyratory are vital and extremely complex and will involve traffic and pedestrian diversions when necessary.

We would ask anyone with concerns to visit Plan Ahead Leeds www.leeds.gov.uk/planahead or visit www.leeds.gov.uk/armleygyratory or follow Connecting Leeds on Social Media for a comprehensive outline of work scheduled and what impact this may have on your journey.

We apologise for any inconvenience felt by the work at Armley Gyratory and would like to express our continued thanks to all residents for their ongoing patience as we work to making the gyratory safer and more accessible for everyone.



Social value updates

SOCIAL VALUE ADD | Armley Gyratory | March 2024

Armley Gyratory improvements are being delivered by Leeds City Council in partnership with the West Yorkshire Combined Authority. The scheme is a key junction on the A58 (M) Inner Ring Road with approximately 100,000 cars using the roundabout everyday. The project aims to improve the efficiency of the roundabout, creating a safer environment for all road users including cyclists and pedestrians. New landscaping will also aim to improve biodiversity and air pollution in the area.

Balfour Beatty, Leeds City Council and the team of subcontractors are collaborating to maximise social value engagement with residents, businesses, community groups and education establishments.



Tracy Brabin
Mayor of
West Yorkshire



Estimated Total Social Value Add:
£5.6 million



Education for all

For two years, the Armley Gyratory team has successfully fulfilled their pledge to promote the construction industry and the wealth of opportunities in the industry within local schools and colleges. This has seen a consistent number of visits to local primary and secondary schools to advise on the career pathways that are available in the construction industry. To date, the project team have engaged with over 1900 students in Leeds.



In recent months, the team have continued to help raise students' aspirations and awareness of the opportunities available to them, including a visit to Roundhay Sixth Form College as part of National Careers Week.

The Armley Gyratory project also continued its proactive approach to engaging with students as they hosted further work experience placements on site.

This approach has meant a delivery of nine weeks work experience throughout the project, whilst also supporting three apprentices and two placement students. Feedback from those in attendance is always extremely positive and it's clear how our inclusive approach will continue to reap rewards as students make the most of translating classroom learning into real life activities.



The team themselves have also surpassed certain health and safety milestones as they continue to take up learning opportunities to ensure the project aligns with health, safety and environmental targets set. Safety remains a primary focus for those working on the project and for the wider community.

Nathan Baxter, Balfour Beatty Sub-Agent on the project, passed his A61 Appointed Person NVQ assessment which contributes to the overall scheme's safety governance.



The team also took some time to collaborate with other projects for a CEMAR (Contract Event

Management and Reporting) workshop. CEMAR combines industry leading knowledge and expertise to make contract management simple in assisting the delivery of projects.

This training is imperative to the fulfilment of project goals surrounding time, safety and communication and cannot be underestimated in terms of how the team can continue to meet the needs of the community, workforce and the environment as part of a project at one of the city's most significant junctions.

Routes in the community

Members of the project team played their part in an incredible day of volunteering at Harewood House Estate to aid their overall ambition of planting a total of 18,143 trees across the estate. Volunteering also aligned with the project's over-arching sustainability and community engagement goals ensuring we continue to give back to the communities in which we work.

The Armley Gyratory scheme aims to increase the biodiversity of the local area and contribute to local conservation efforts in helping restore parklands, woodlands and habitats for local wildlife. Twenty-four volunteers from across several Balfour Beatty projects braved some very unfavourable conditions to plant a record breaking 1,500 trees as part of an overall effort to help provide a visible and lasting legacy for generations to come.



Lighting the way

March saw the project welcome the Lighthouse Construction Industry charity to deliver a talk regarding wellbeing and mental health within the industry.



The Armley team were joined by Jack and Rob as they spoke of their own battles with mental health and how checking on a mate can sometimes make a significant difference when they might need it most. The charity is unique as it offers support for not just those within the industry but also their families.

Although clear barriers still exist when it comes to talking about how we feel, open forums and discussions like this seek to change the perception and break down the stigma surrounding mental health.

Jack and Rob's personal accounts were emotional, thought provoking and gave real depth to the problems faced by many. For more information about The Lighthouse Construction Industry charity visit their website: <https://www.lighthouseclub.org>

Getting in touch

Please sign up for the 'latest news' on the project by visiting the website and registering your email: www.leeds.gov.uk/armleygyratory

If you have questions about the scheme, you can email us at: connectingleeds@leeds.gov.uk

You can also join the conversation on social media by following @ConnectingLeeds on Twitter and Facebook.

We would like to take this opportunity to apologise for any inconvenience and assure you that every effort will be made to keep disruption to a minimum.

Kind regards

The Connecting Leeds Team

