

Welcome

On behalf of Aberdeen City Council, thank you for visiting the second public consultation for the new Hazlehead Academy Campus. The purpose is to provide you with more detailed information on the project and how the design has developed since the first public consultation and comments received. Below is a summary of key comments (supportive and concerns) and the responses or actions that have, or will, be undertaken by Aberdeen City Council (ACC).

Supportive Comments

- Modern Design and Improved Facilities:** Many respondents appreciated the modern design and the improved facilities, including the layout and accessibility of the campus. They felt that the new design would provide a better working environment for both pupils and teachers.
- Accessibility and Safety:** Respondents liked the provision of safe walking and cycling routes.
- Sports and Outdoor Spaces:** The inclusion of sports facilities and well designed outdoor spaces was a significant positive aspect for many respondents. They felt that these facilities would encourage physical activity and provide a community hub for sports.
- Maintenance and Management:** The fact that the school would be maintained by Aberdeen City Council (ACC) rather than by a contractor was seen as a positive aspect, as it would allow for better control over ongoing maintenance.
- Community Involvement:** Some respondents appreciated the opportunities for community involvement and the potential for the school to serve as a community hub. They felt that the new facilities would benefit not only the students but also the wider community.
- Environmental Considerations:** The orientation of the building to maximise natural light and the inclusion of green spaces were also appreciated. Respondents felt that these features would create a pleasant and sustainable environment.
- Future Proofing:** The new design was seen as future proof, with sufficient space and facilities to accommodate the growing number of students and the changing needs of the community.

Concerns Raised and Responses / Actions

- Safe Routes:** Some respondents were worried about the safety of walking and cycling routes.

Response: A safe route to school assessment will be undertaken to inform the development and implementation of a safe routes proposal.
- Integration and Community Cohesion:** Some respondents were worried about the integration of pupils from different areas and the potential impact.

Response: Measures will be implemented to ensure smooth integration and encourage a sense of community cohension.
- Capacity:** There were concerns about the new school's capacity and how this would affect students making the secondary transition before the new school is built.

Response: Hazlehead Academy and Aberdeen City council will liaise closely with feeder schools and parents and carers to ensure smooth transitions.
- Environmental Considerations:** Respondents highlighted the importance of maintaining outdoor spaces and ensuring the new school is environmentally friendly and encourages biodiversity.

Response: The Learning Estate Investment Programme has set out green energy targets that the new school must meet to be eligible for funding.
- Communication:** Concerns were raised about the project's timeline and the potential impact of delays.

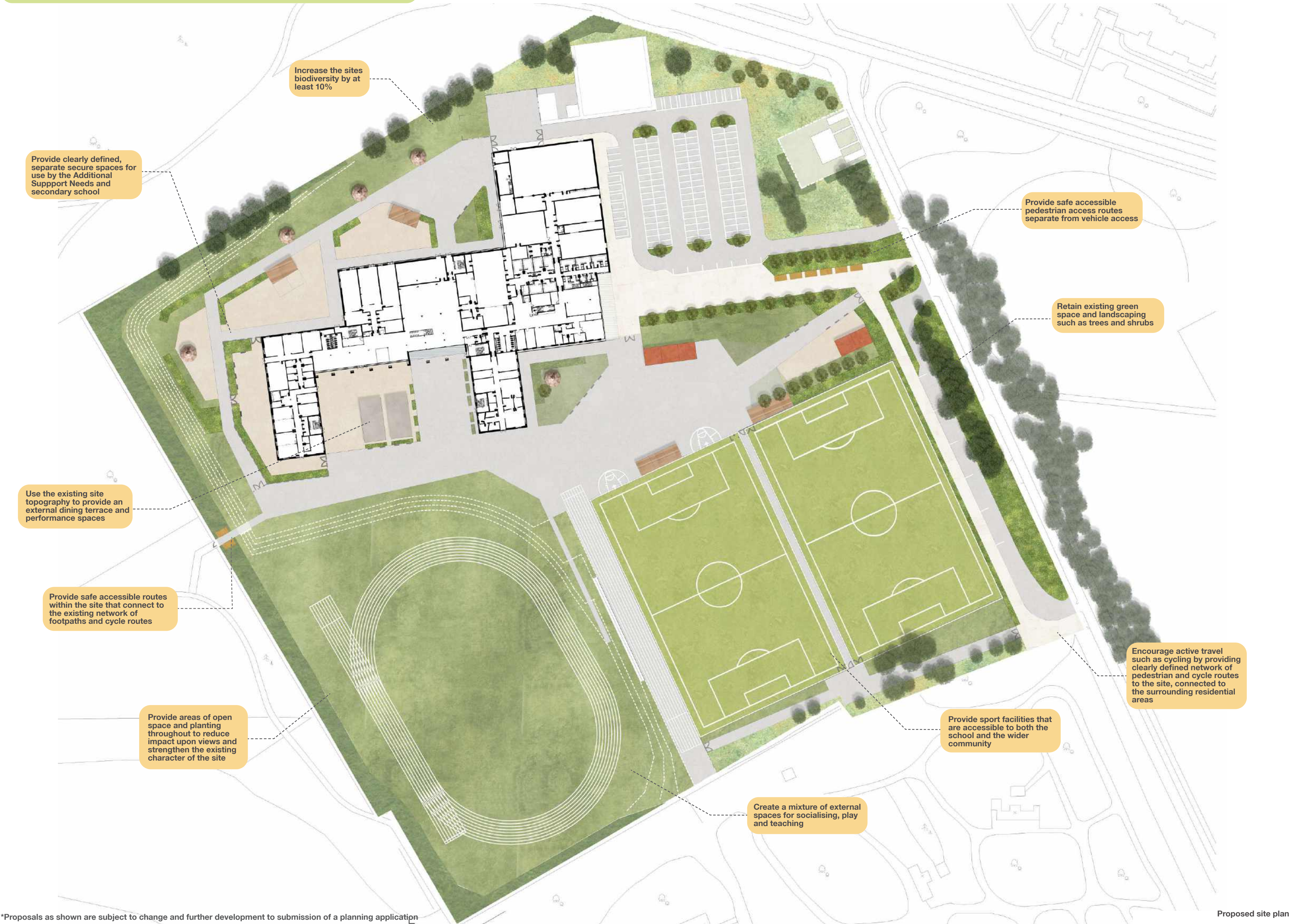
Response: The council acknowledges the need for clear communication about the project's progress and any changes to the timeline will be updated regularly at the common place link provided on the QR code (see board four)
- Facilities:** Respondents felt that a swimming pool is a facility that should be included in the new campus.

Response: Two of Aberdeen's swimming facilities are within three miles of Hazlehead. A new swimming pool was not economically viable.

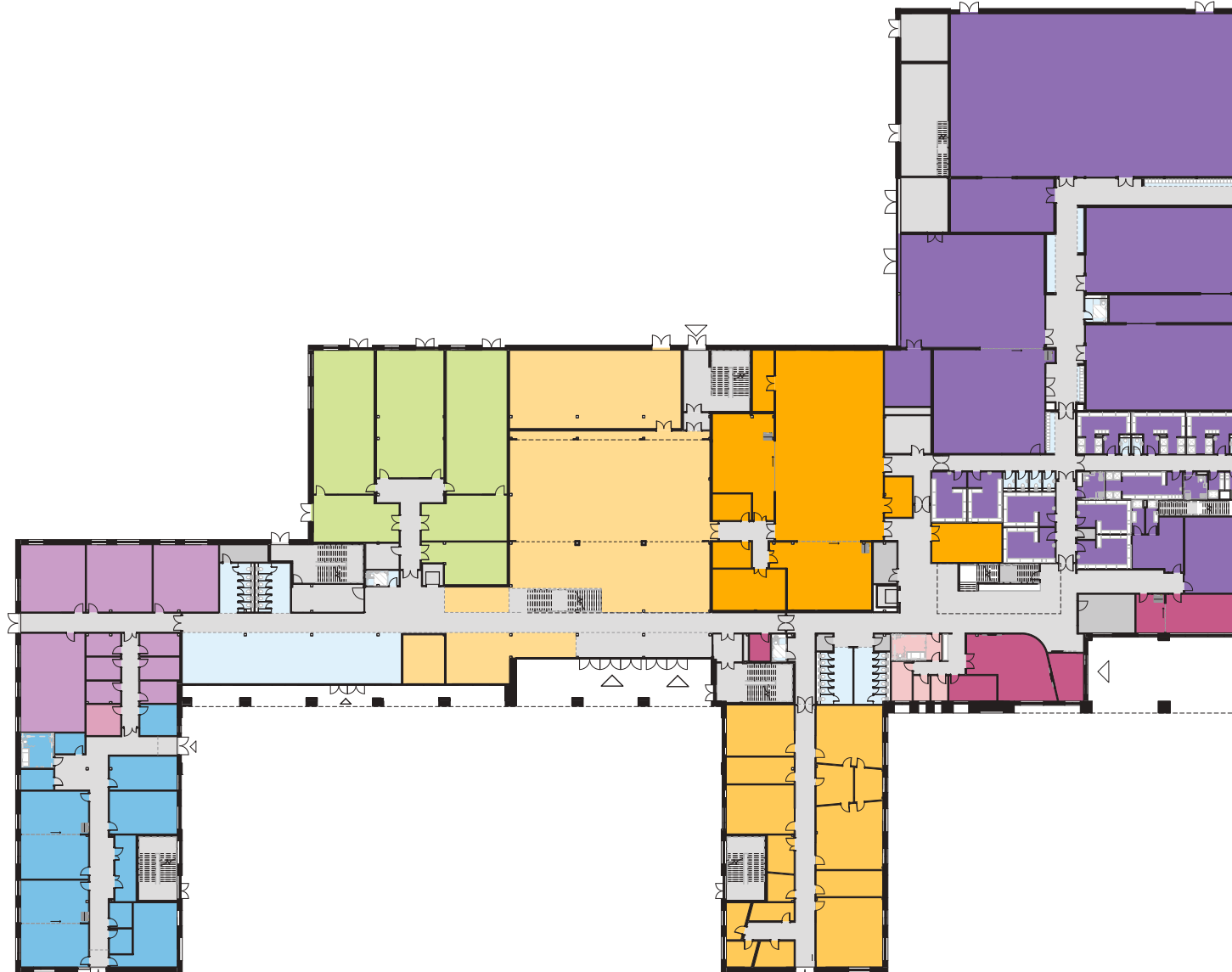
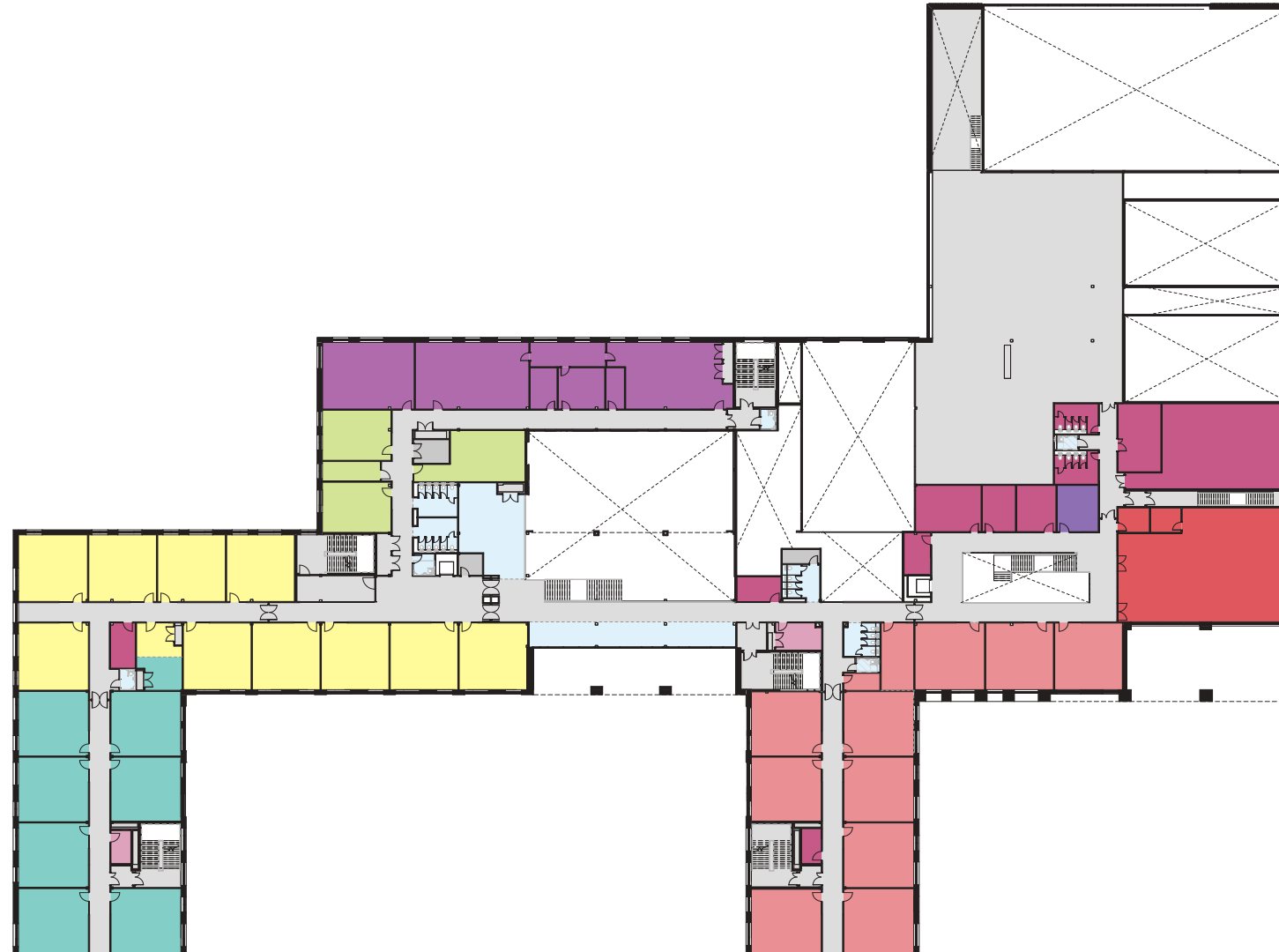
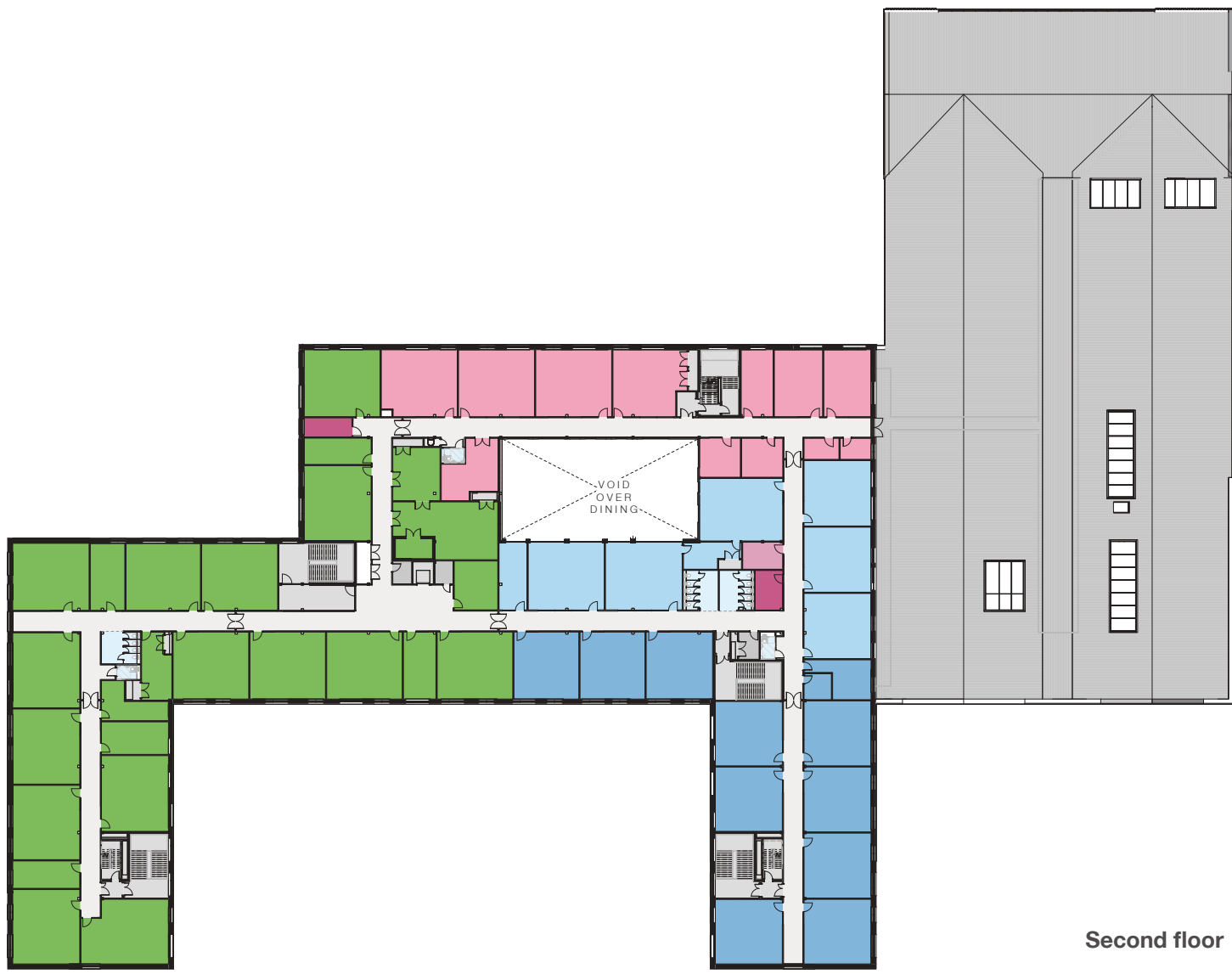
Site and Landscape Strategy

The aim of the landscape masterplan is to enhance the natural environment within the existing school and to add value to the surrounding areas. The landscape strategy for the site ensures that a series of stimulating and exciting learning environments will be created that reflect the teaching spaces within the school buildings. These spaces will be relevant in scale to the school buildings that are proposed for the site, with smaller intimate spaces being created in the vicinity of the Additional Support Needs and larger multifunctional spaces being created near the secondary school.

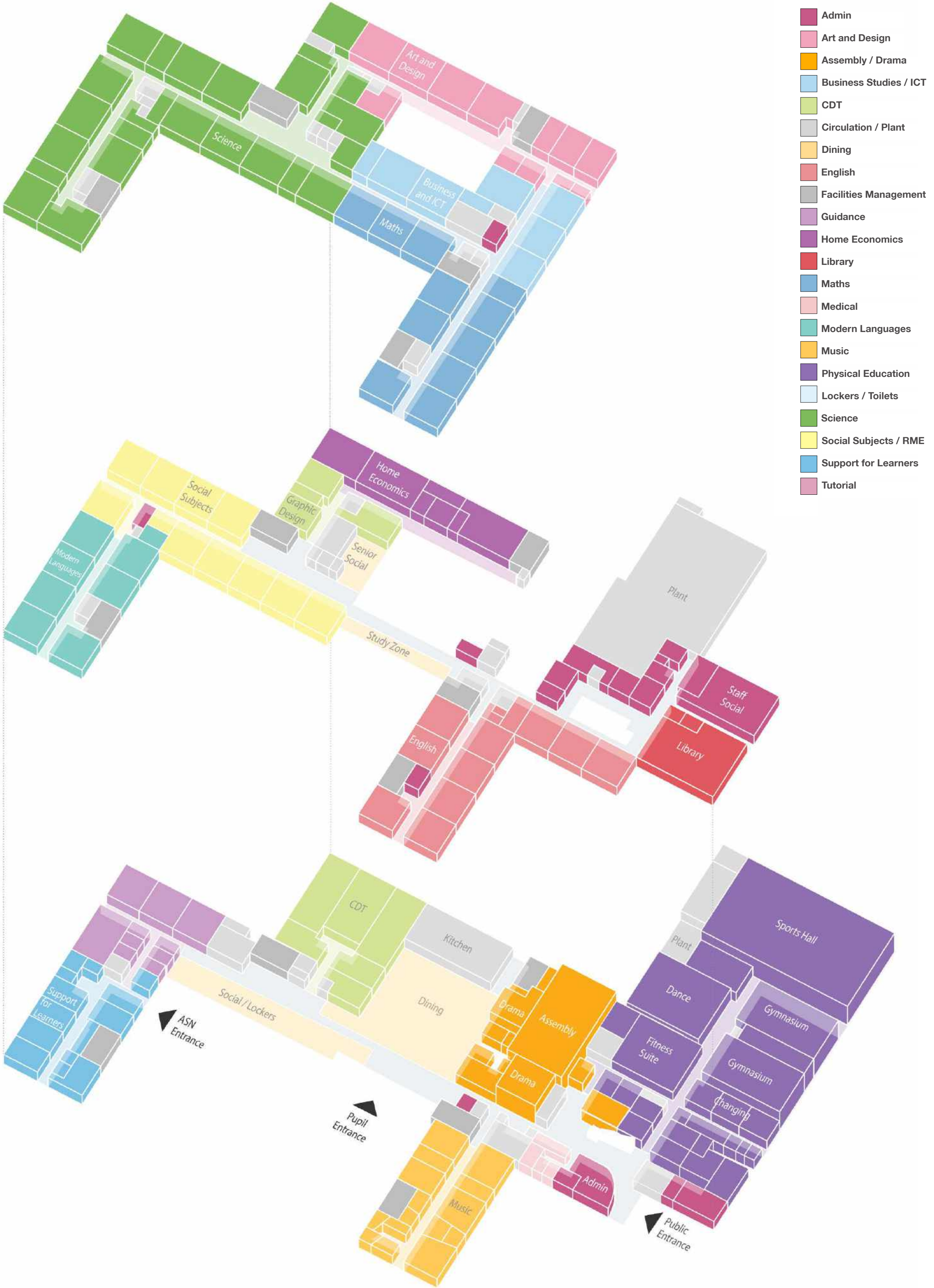
The following will inform the landscape vision for the school grounds:



Proposed Building



General arrangement plans



- Admin
- Art and Design
- Assembly / Drama
- Business Studies / ICT
- CDT
- Circulation / Plant
- Dining
- English
- Facilities Management
- Guidance
- Home Economics
- Library
- Maths
- Medical
- Modern Languages
- Music
- Physical Education
- Lockers / Toilets
- Science
- Social Subjects / RME
- Support for Learners
- Tutorial

Key Connections and Adjacencies

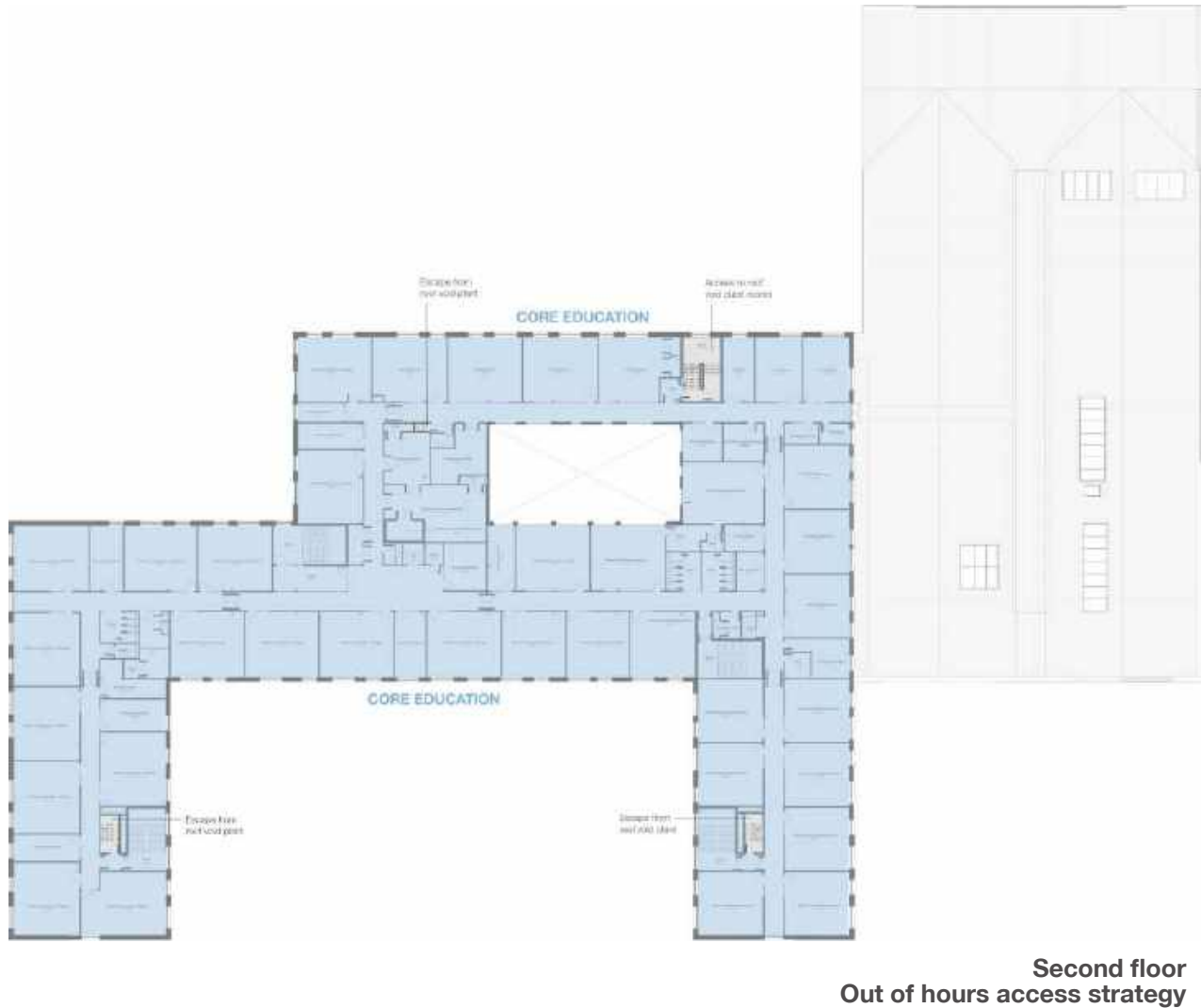
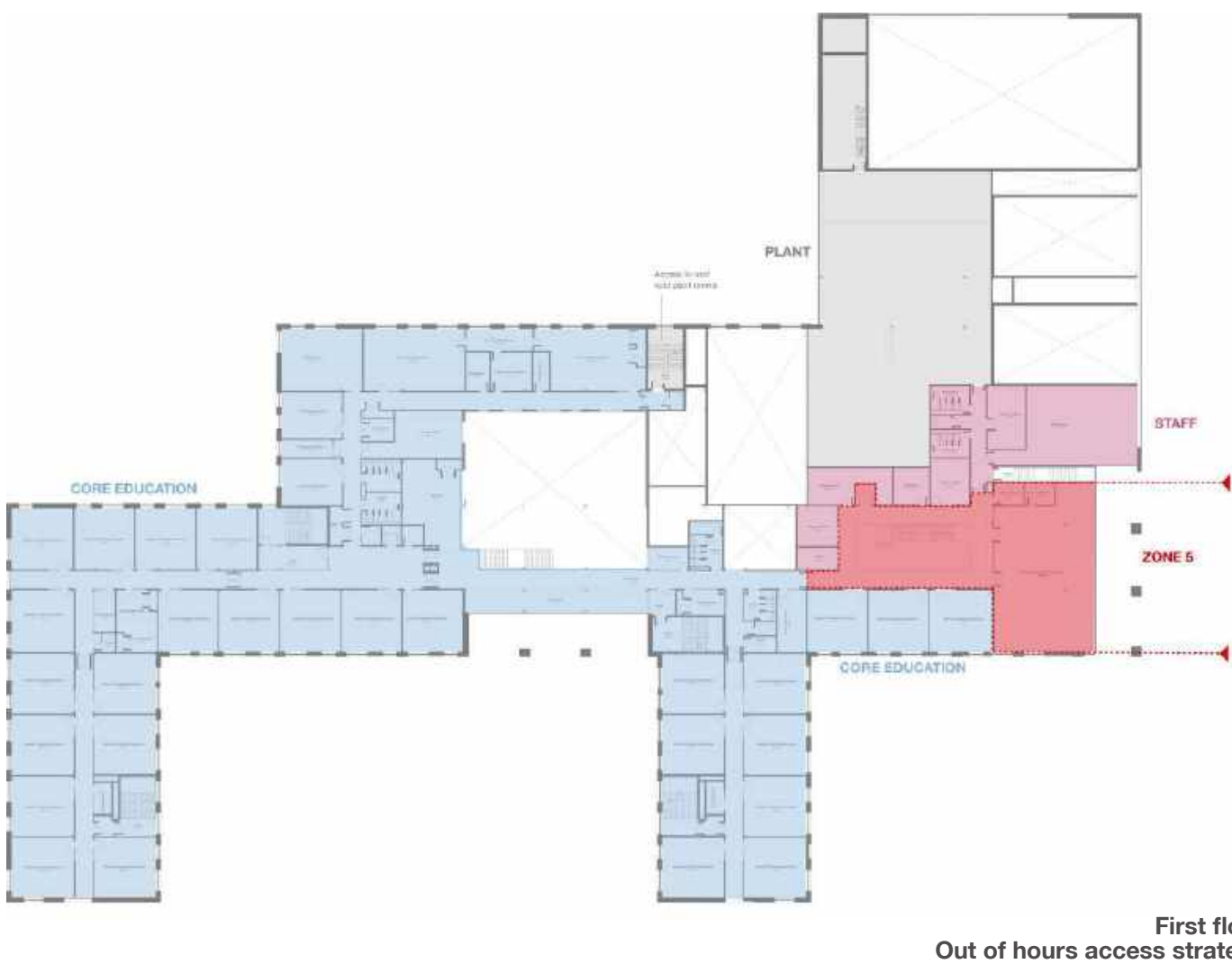
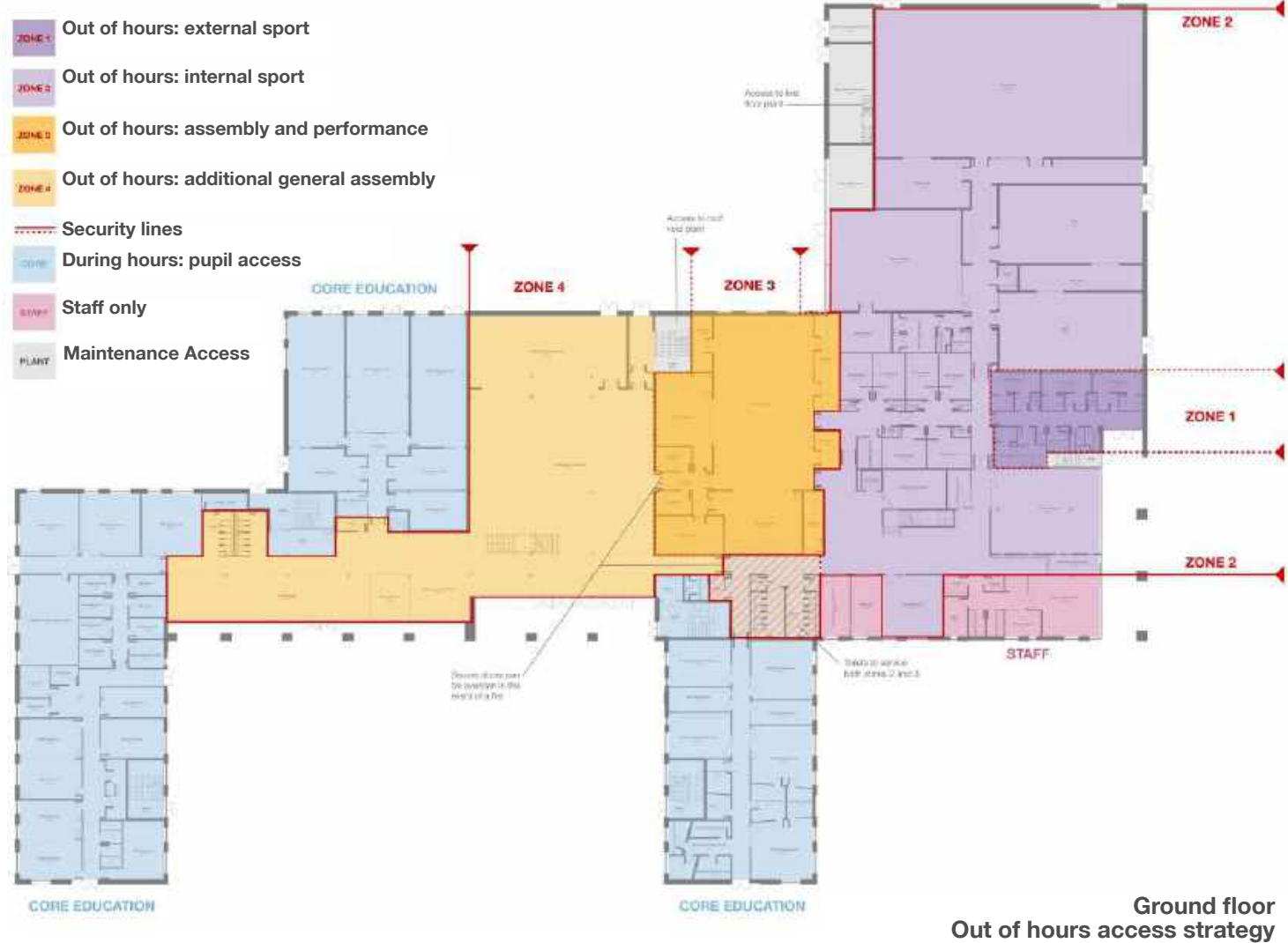
The site layout and building adjacencies were met with general positivity at the first consultation. The purpose built school design was highly appreciated by respondents for its thoughtful and functional layout, with everything under one roof. The building features a permeable ground floor with direct access to outdoor learning spaces while upper floors accommodate classrooms that offer a focused learning environment. Respondents liked the adjacency of departments to encourage collaboration across subjects. The approach to maximising natural light and views to the wider site was also appreciated.

Community Access

The benefits of allowing community use of certain school facilities, such as the sports areas and assembly hall were well received by respondents. To enable this while ensuring pupil safety, clear security lines will be established, allowing a seamless transition between public, semi public, and core teaching spaces. Community accessible areas are positioned near the entrance, with controlled access available outside school hours.

The out of hours access has been split into five zones.

The sports facilities have been split into two zones with zone one designated as wet changing for outdoor sports use and zone two providing dry changing areas for indoor sports facilities. Zones three and four will allow access to the assembly hall for performances (Zone 3) with the potential to open up the dining area out of hours for larger gatherings (Zone 4). Hard security lines define where out of hours access meets core education areas, as indicated in the plans below. The fifth zone includes access to the library on the first floor which could be opened up for small group and parent / teacher meetings.



*Proposals as shown are subject to change and further development to submission of a planning application

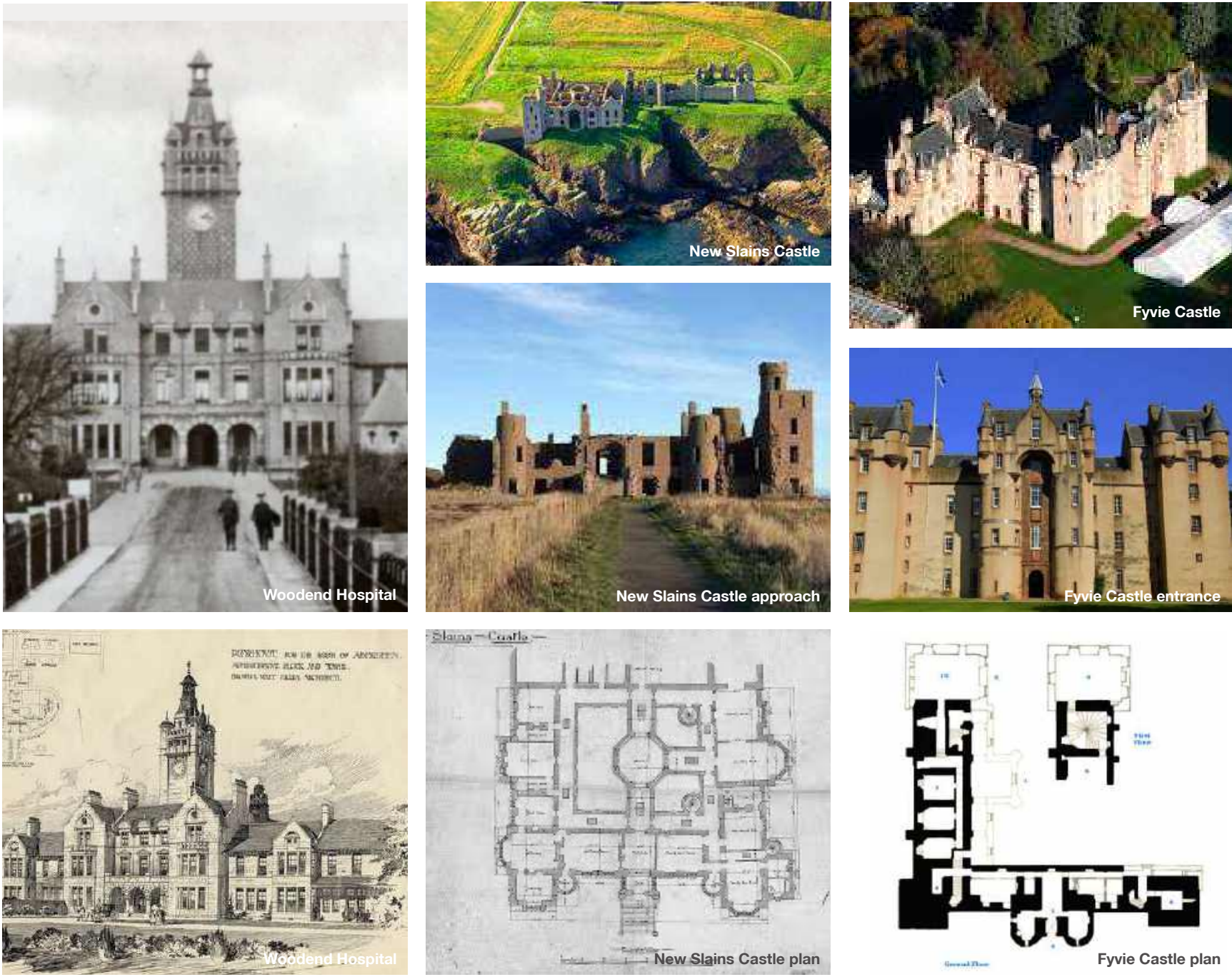
Elevation Strategies

The design of the external envelope is inspired by the local historic context. The courtyard layout and pitched roofs create a series of gable ends along each elevation, reflecting an architectural language seen throughout Aberdeen’s history. Notably, Woodend Hospital, located nearby, uses gable ends to establish order and break down the massing of a large, complex building.

Similarly, several castles in the Aberdeen area follow this approach. These historic structures have influenced the design by demonstrating how large buildings can manage massing while expressing their elevations through solid gable ends.

Taking inspiration from historic examples in Aberdeen, the gable ends are expressed as solid elements on each elevation. A colonnade wraps between them, framing the internal courtyard and entrance area, as shown in the diagram below. This colonnade introduces a sense of order and regularity to the façades.

A distinct datum line is established at the colonnade and second floor, creating a visual break that helps to reduce the overall massing. Above this, a lighter material is introduced at the upper level and behind the colonnade, further breaking down the scale. This allows openings to be positioned more freely at the upper level, where classroom layouts are more irregular compared to the structured grid of the lower floors.



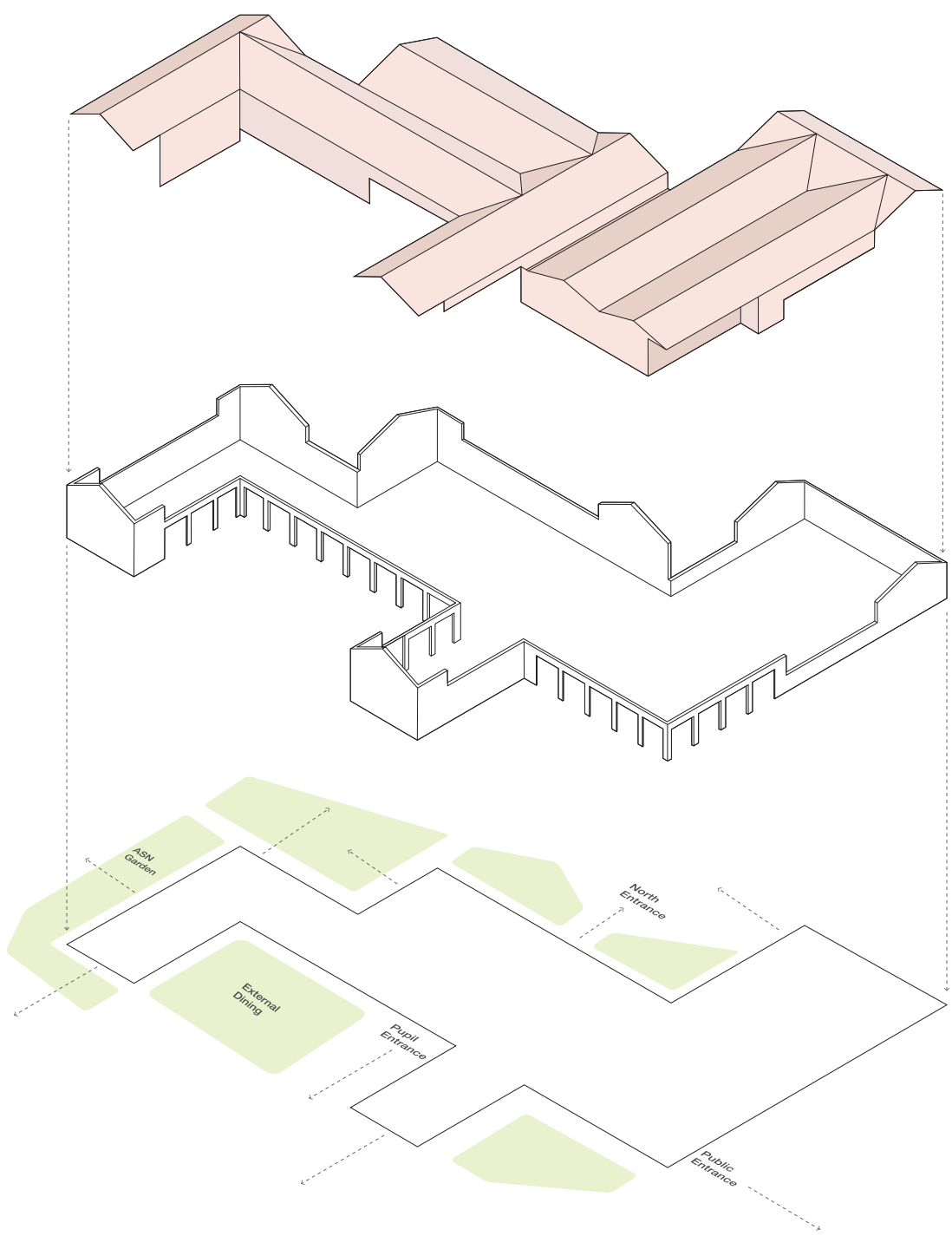
Material studies



East approach elevation

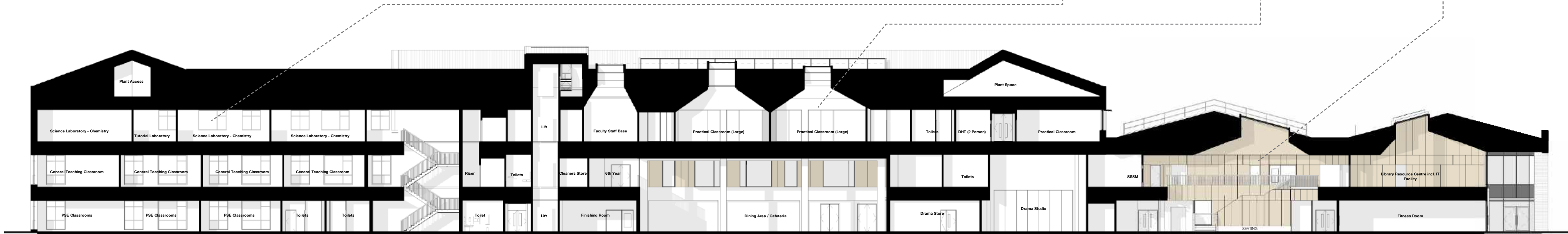


South courtyard elevation



Concept massing





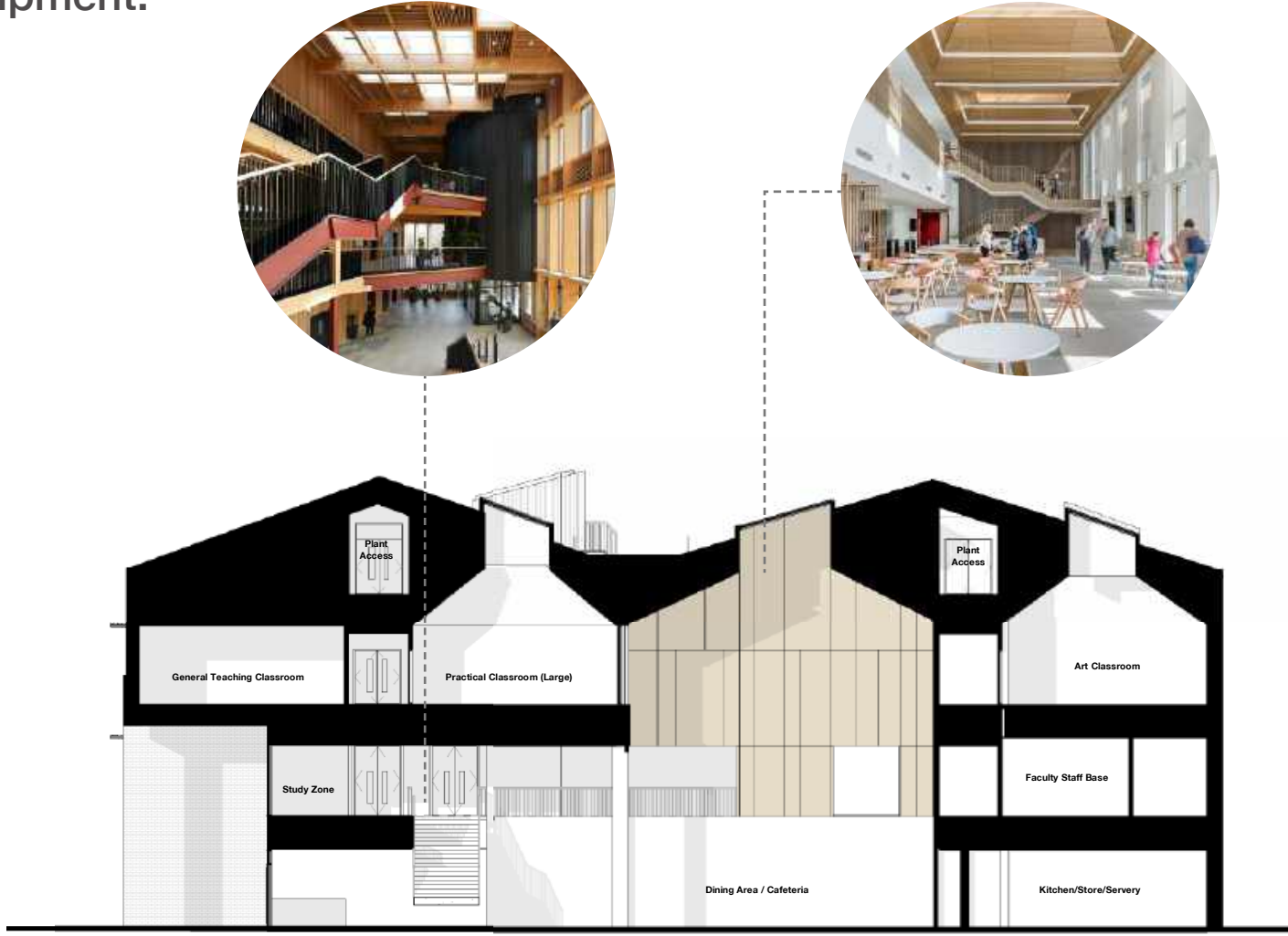
Key Spaces

The interior design of the proposed school focuses on creating bright, welcoming, and well connected spaces that enhance wellbeing and learning. School engagement sessions highlighted the importance of light, outdoor views, natural materials and a calming colour palette for student wellbeing.

Carefully considered spatial design ensures that light is maximised throughout the building. Rooflights and sloped ceilings allow diffused natural light to fill key areas, enhancing the sense of openness and comfort. Large windows and strong visual connections to the outdoors further reinforce this airy, uplifting atmosphere.

To introduce warmth and a welcoming feel, timber is used in key spaces such as the dining hall and main entrance. The seamless connection between indoor and outdoor spaces strengthens the relationship with nature, fostering a calm and engaging learning environment.

Stakeholders also expressed the need for a variety of learning environments and opportunities for different styles of learning. This has been carefully considered in the layout design and will be further developed during the detailed planning of furniture, fixtures and equipment.



Next Steps



Tell Us What You Think

We hope that you have found this exhibition useful. We would be grateful if you could complete a feedback form to ensure that your views are recorded and can be considered as the proposal further develops. Please leave your comments form in the box provided, or alternatively send your comments by Friday 21 March by email to: schoolestate@aberdeencity.gov.uk or by post to:

New Hazlehead Academy Public Consultation,
c/o Corporate Landlord,
Families & Communities, Hub 10, 2nd Floor South,
Marischal College, Broad Street,
Aberdeen,
AB10 1AB

You can find these boards online by scanning the adjacent code, or by visiting:
<https://newhazleheadacademycampus.commonplace.is>
where you will be able to leave your comments digitally.



The Design Team

Client
Aberdeen City Council



Building Services Engineer
Wallace Whittle



Acoustic Consultant
Robin Mackenzie Partnership



Architect / Landscape Architect
Ryder Architecture



Civil and Structural Engineer
Goodson Associates



BIM Information Manager
Okana



Development Partner
Hub North Scotland Ltd



Quantity Surveyor /
Project Manager
Currie and Brown



Fire Engineer Consultant
Atelier Ten



Principal Designer
Thomson Gray

