

### CODES AND STANDARDS

These products meet or exceed the following codes and standards:

ASSE 1016

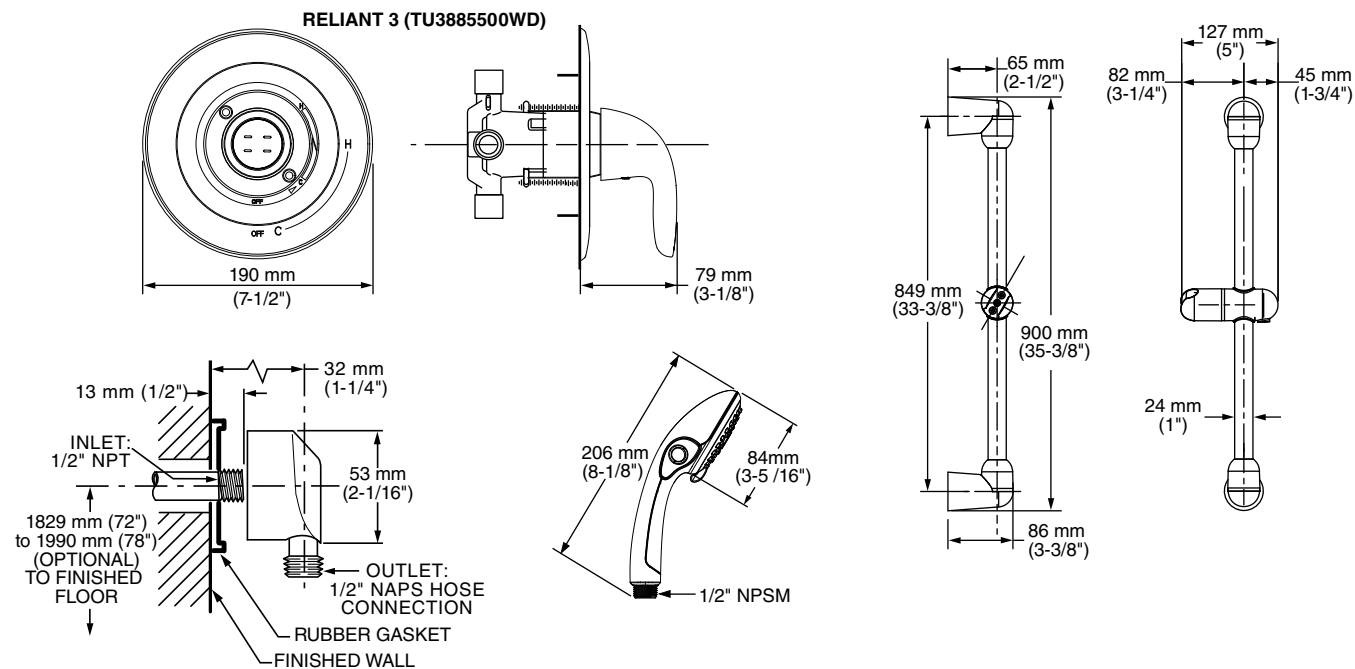
ASME A112.18.1016

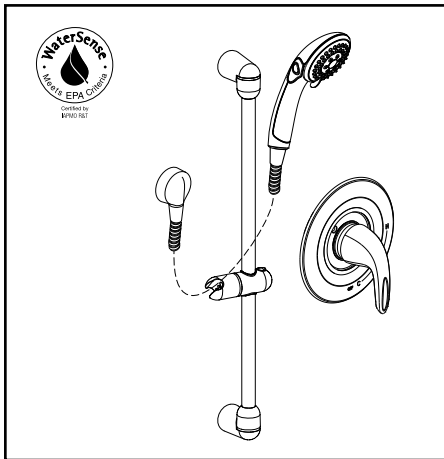
CSA B125.16

ASME A112.18.1

CSA B125.1

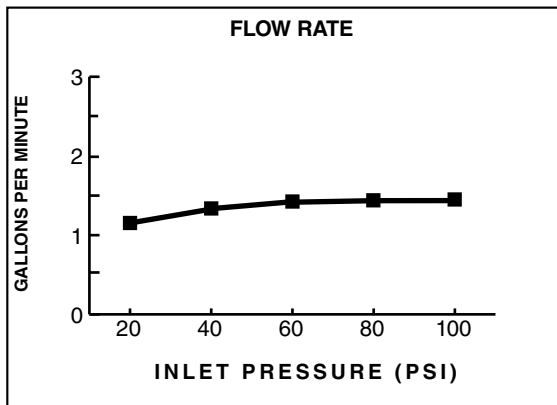
Product Number	Description	Finish
		Polished Chrome
		002
TU662.221	Commercial Shower System Trim Kit. Contains double ceramic pressure balance cartridge, valve trim kit, 3-function hand shower with non-positive shut-off, metal hose, vacuum breaker, wall supply and 36" slide bar. 2.5 gpm/9.5 L/min. <b>** Flash rough-in valve must be purchased separately</b>	





## GENERAL DESCRIPTION:

Commercial shower system trim kit includes metal valve trim, wall supply (with 1/2" NPT female inlet and 1/2" NPSM male outlet), a 59" (1500 mm) metal shower hose, vacuum breaker, a 3-function hand shower with non-positive shut-off and a 36" slide bar. One-piece double ceramic pressure balance cartridge maintains a constant output temperature in response to changes in relative hot and cold supply pressure. Integral check valves prevent cross flow. Adjustable hot limit safety stop. Back-to-back capable. Durable valve trim with metal handle and escutcheon. Slide bar features an adjustable hand shower holder which can be set at any height or position along the bar and angle up to 45°. 1.5 gpm/5.7 L/min.



## MODEL NUMBER:

### □ TU662.211 Commercial Shower System Kit

Includes:

• Reliant3 Valve Only Trim - Includes Pressure Balance Cartridge	TU385500WD **
• 3-Function Hand Shower with non-positive shut-off	1660.766
• In-Line Vacuum Breaker	1660.400
• 59" Metal Hose	8888.035
• Wall Supply	8888.037
• 36" Slide Bar	1660.236

**\*\* Flash rough-in valve must be purchased separately**

## PRESSURE BALANCE CARTRIDGE:

**One-Piece Cartridge:** Simplifies installation and maintenance.

**Double Ceramic Pressure Balance Cartridge:** Combination of ceramic disc mixing valve and a ceramic balancing spool in a one-piece cartridge.

**Ceramic Disc Mixing Valve:** Assures a lifetime of drip-free performance and smooth handle operation.

**Ceramic Balancing Spool:** Maintains a constant output temperature in response to changes in relative hot and cold supply pressure. Ceramic material is unaffected by mineral deposits and harsh water conditions.

**Integrated Check Valves:** Engineered to eliminate cross flow.

**Adjustable Hot Limit Safety Stop:** Limits the amount of hot water allowed to mix with cold. Reduces the risk of accidental scalding.

**Comfort Zone:** Offers a wider range to fine tune the desired temperature.

**Back-to-Back Capability:** Hot and cold can be reversed quickly and easily.

**Trim Kit:** Metal escutcheon with metal lever. Red / blue indicator ring.

### **HAND SHOWER WITH PAUSE FEATURE:**

**Water Saving:** Saves 40% in water usage.

**ADA-Compliant:** Non-positive shut-off button on handle reduces flow to a trickle.

### **36" SLIDE BAR:**

**Simple Height Adjustment:** Allows positioning of the hand shower anywhere along the bar.

**NOT DESIGNED TO BE A GRAB BAR.**

## SUGGESTED SPECIFICATION

Commercial shower system trim kit shall feature metal valve trim, wall supply (with 1/2" NPT female inlet and 1/2" NPSM male outlet), 59" metal hose, vacuum breaker, 1.5 gpm/5.7 L/min. 3-function hand shower with non-positive shut-off and a 36" slide bar. Shall also feature one-piece double ceramic pressure balance cartridge. Fitting shall be American Standard Model # TU662.211.002.