

'Apollo' Valves

SUBMITTAL SHEET

LEAD FREE

70LF-300 Series

Single Union End Bronze Ball Valve



Job Name:	
Job Location:	
Engineer:	
Contractor:	
Tag:	
PO Number:	
Representative:	
Wholesale Distributor:	



DESCRIPTION

The Apollo® 70LF-300 Series is a standard port ball valve that combines pipe union with ball valve shut-off.

FEATURES

- Adjustable Packing Gland
- Blow-Out Proof Stem Design
- RPTFE Seats and Stuffing Box Ring
- Chromium Plated Ball

PERFORMANCE RATING

- Maximum Pressure:
600 psi CWP, 150 psi SWP
- Maximum Temperature: 500°F
- Vacuum Service to 29 in. Hg

APPROVALS

- MSS SP-110
- Federal Specifications: WW-V-35C
- CRN: OC10908.5C
- NSF/ANSI 61 Section 8
- NSF/ANSI 372 Lead Free

MODELS

- 70LF-300 Series - Standard
- 70LF-340 Series - 316 SS Ball & Stem

OPTIONS & SIZES

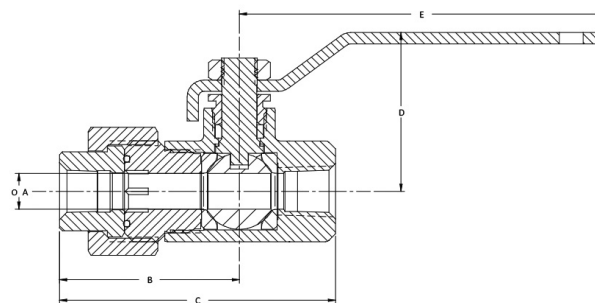
- (-04) 2 1/4" CS Stem Extension 1/4" - 2"
- (-10) SS Lever & Nut 1/4" - 2"
- (-27) SS Latch-Lock Lever & Nut 3/4" - 2"
- (-63) NPT x Solder/Socket weld 3/8" - 2"

STANDARD MATERIALS LIST

Part Name	Material
Lever and Grip	Steel, Zinc Plated w/ Vinyl
Stem Packing / Bearing	RPTFE
Ball	C27451 Lead Free Brass or ASTM B283, C37700 Chrome Plated
Seat (2)	RPTFE
Retainer	C27451 Lead Free Brass (1/4" to 1-1/2"), B584-C89836 Lead Free Bronze (2")
Gland Nut & Stem	B16 Brass
Lever Nut	Steel, Zinc Plated
Body Seal (1-1/4" to 2")	PTFE
Body	B584 C89836 Lead Free Bronze
Tailpiece & Nut	C27451 or B584-C80836
Union Seal	Fluorocarbon
Stem	C27451 Lead Free Brass

DIMENSIONS

Part Number	Size (in.)	Dimensions (in.)					Wt. (lbs.)
		A	B	C	D	E	
70LF-301-01	1/4"	0.37	1.90	2.93	1.75	3.87	0.86
70LF-302-01	3/8"	0.37	1.90	2.93	1.75	3.87	0.84
70LF-303-01	1/2"	0.50	2.00	3.09	1.75	3.87	0.99
70LF-304-01	3/4"	0.68	2.46	3.96	2.12	4.87	1.91
70LF-305-01A	1"	0.87	2.83	4.50	2.25	4.87	2.42
70LF-306-01	1-1/4"	1.00	2.68	4.68	2.62	5.50	4.27
70LF-307-01	1-1/2"	1.25	2.87	5.06	3.05	8.00	5.82
70LF-308-01	2"	1.50	3.25	5.59	3.24	8.00	8.55



* LEAD FREE: The wetted surfaces of this product shall contain no more than 0.25% lead by weighted average. Complies with Federal Public Law 111-380. ANSI 3rd party approved and listed.

Apollo Valves, Manufactured by **Conbraco Industries, Inc.**
701 Matthews Mint-Hill Road, Matthews, NC 28105 USA
www.apollovalves.com | (704) 841-6000

This specification is provided for reference only. Conbraco Industries Inc. reserves the right to change any portion of this specification without notice and without incurring obligation to make such changes to Conbraco products previously or subsequently sold. Please visit our website @ www.apollovalves.com for the most current information.

