

2603SMTM – EVERYDAY TUB/SHOWERS

60 x 32 x 80 inches



FEATURES

- Tub-shower
- Smooth wall finish
- Ergonomic backrest
- Above-floor rough
- 19" skirt
- Slip-resistant textured bottom
- Left or right hand drain
- AcrylX™ applied acrylic surface
- Lifetime limited warranty

OPTIONS

- Grab bar reinforcement
- Factory installed assisted care grab bars
- Designer drain, waste & overflow
- Shower door series L0516

AQUATIC ADVANTAGE

- National distribution
- 6 manufacturing facilities
- Private fleet
- Centralized customer service
- Field support

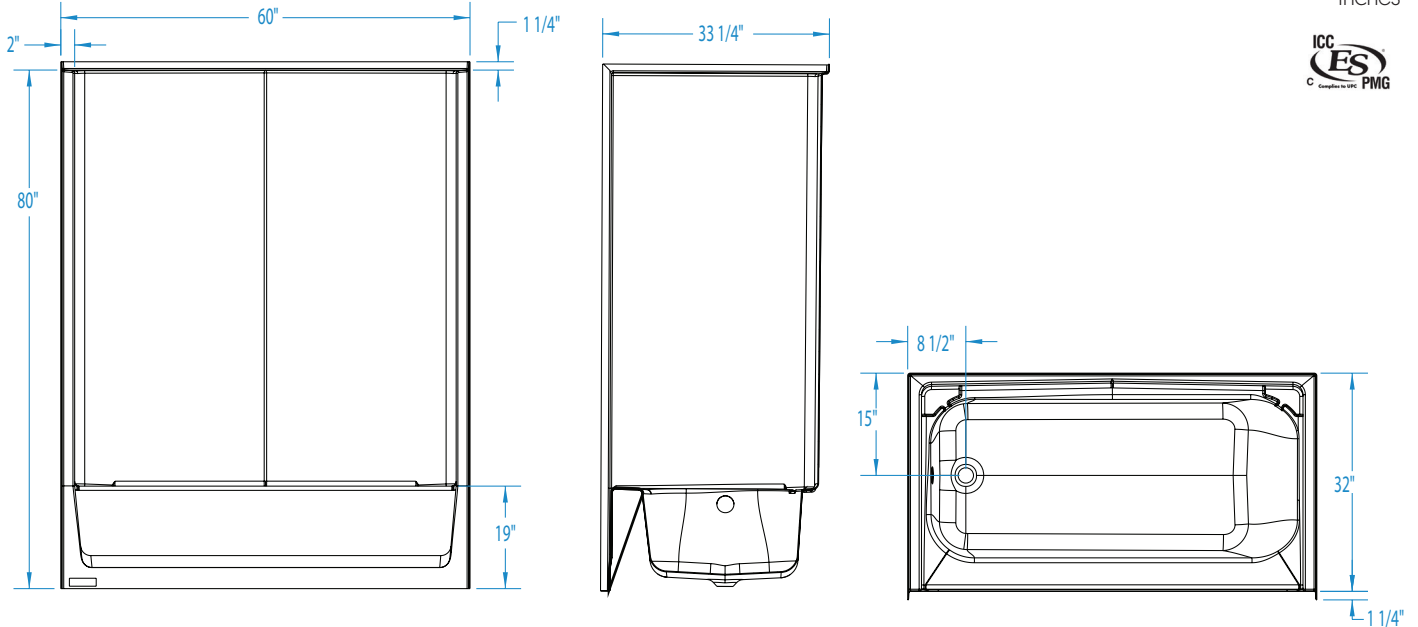
COLOR OPTIONS

Stock	Upgraded	Premium
White	Almond Linen/Biscuit Bone	Black Mexican Sand Sand Bar Sterling Silver



2603SMTM

60 x 32 x 80
inches



FEATURES lbs Dimensional Tolerance $\pm \frac{3}{8}$ ". Dimensions needed for site preparation should be measured from the unit. Aquatic assumes no responsibility for preparatory work.

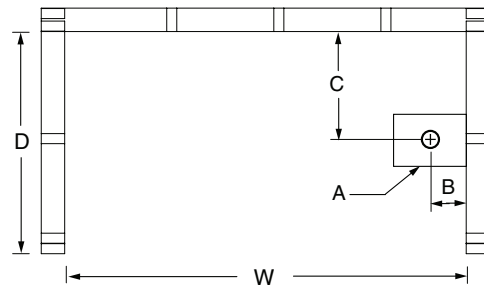
Model #	Material	Wall Finish	Pieces	Drain	Skirt Height	Net Wt.	Pkg. Wt.
Tub-Shower #2603SMTM	AcrylX™	Smooth	1	LH or RH	19	137	142

DIMENSIONS

Specifications	inches
Width: Overall / Net	60
Depth: Overall / Net	33 1/4 / 32
Height: Overall / Net	81 1/4 / 80
Enclosure Opening	56
Skirt Height	19
Drain Rough-In (from Back Wall)	15
Drain Rough-In (from Side Wall)	2
Drain: Diameter / Clearance	2 / 4 3/4

FRAMING DIMENSIONS inches

Type	D Depth	W Width	H Height	A	B	C
Alcove	33 1/4	60 1/8	—	6 x 12	2	15



SUMP DATA

Top of Drain to Bottom of Overflow	Capacity to Overflow gal	Min. Operating Capacity gal	WIDTH @ centerline		DEPTH @ centerline	
			Top	Bottom	Top	Bottom
12	38	—	53 3/4	45 1/4	23 1/4	21 1/4