

# 490LF Series Hot & Cold Anti-Siphon Frost-Proof Hydrants



## Lead Free Wall Hydrants

Hot & Cold Frost-Proof With Self-Draining Vacuum Breaker

### Features & Benefits

- Heavy duty lead free bronze construction: NSF/ANSI 372 certified lead free by IAPMO
- Hot & cold water mixing with red & blue handles
- Factory installed self-draining vacuum breaker provides protection against back flow & relieves back pressure per ASSE 1019-A
- Self-draining feature provides freeze protection by allowing hydrant to drain when shut.
- Maximum pressure: 125 PSI
- Maximum temperature: 140° F
- Flow rates: 10 GPM at 50 PSI
- 3-year limited warranty
- Available in horizontal or vertical (V) models
- Available in loose-key models
- Available in 4, 6, 8, 10, 12 & 14 inch lengths
- Per ASSE 1019 plumbing code, do not leave hydrant pressurized (turned on) for over 12 hours at a time



## 490LF Series Hot & Cold Anti-Siphon Frost-Proof Hydrants

### Base Models

#### 491 Series- 3/4" WIRSBO Inlet



# 491-xxLF

3/4" WIRSBO style tube inlet x 3/4" hose thread outlet

#### 492 Series- 1/2" WIRSBO Inlet



# 492-xxLF

1/2" WIRSBO style tube inlet x 3/4" hose thread outlet

#### 495 Series- 1/2" FIP 3/4" MIP Inlets



# 495-xxLF

1/2" FIP & 3/4" MIP inlets x 3/4" hose thread outlet

#### 496 Series- 1/2" MIP & Sweat Inlets



# 496-xxLF

1/2" MIP & copper sweat inlet x 3/4" hose thread outlet

#### 497 Series- 3/4" PEX Inlet



# 497-xxLF

3/4" PEX style tube inlet x 3/4" hose thread outlet

#### 498 Series- 3/4" MIP & Sweat Inlets



# 498-xxLF

3/4" MIP & copper sweat inlet x 3/4" hose thread outlet

#### 499 Series- 1/2" PEX Inlet



# 499-xxLF

1/2" PEX style tube inlet x 3/4" hose thread outlet

#### 490V Vertical Model



# 49\_-xxVLF

Vertical inlet connections- same inlet connections as horizontal models

### Repair & Replacement Parts

#### Replacement Oval Handle & Screw



# PK1295

Replacement red & blue oval handles (# 2) & 2 stainless steel screws (# 1)

#### Self-Draining Vacuum Breaker



# PK1390  
# 59BFPCHR

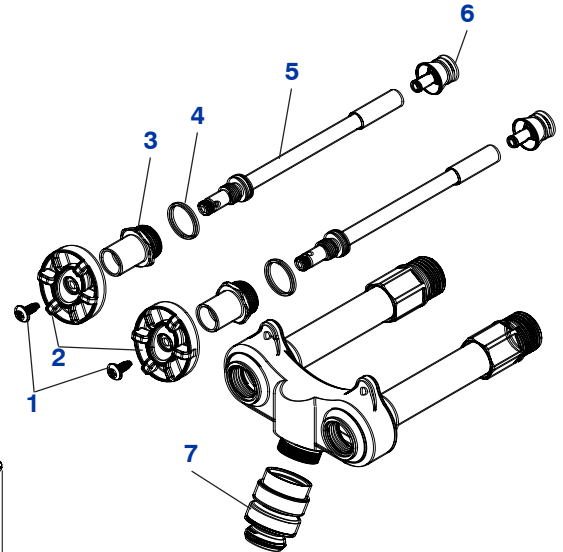
Fine thread self-draining VB (# 7)

#### Spring-Less Check Assembly



# PK6026

Replacement spring-less check assembly (# 6)



#### Self-Draining Vacuum Breaker



# PK1390V \*

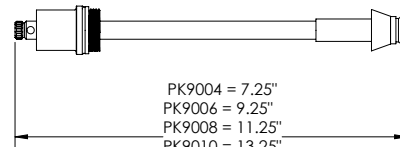
Male fine thread- fits vertical models pre-2016 only

#### Replacement Stem Assembly



# PK90\_

490 series stem assembly (# 3-6)



PK9004 = 7.25"  
PK9006 = 9.25"  
PK9008 = 11.25"  
PK9010 = 13.25"  
PK9012 = 15.25"  
PK9014 = 17.25"

\*For vertical style hot & cold hydrants installed prior to 2016, use PK1390V & PK90\_V stem assembly for replacement parts. Contact Arrowhead Brass for more details

