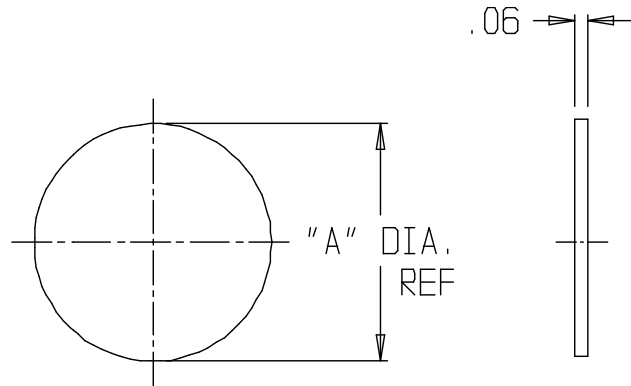


# SUBMITTAL DATA SHEET

Service Fitting – 6125  
Copper Flare Disc



| PLATE NO. | SIZE  | "A" DIA. |
|-----------|-------|----------|
| 6125      | 3/4   | 1.16     |
| 6125      | 1     | 1.46     |
| 6125      | 1 1/4 | 1.92     |
| 6125      | 1 1/2 | 2.33     |
| 6125      | 2     | 3.05     |

## SUBMITTAL INFORMATION

- Manufactured in compliance with ANSI/AWWA C800 (latest revision)
- Copper components conform to UNS C12200 (latest revision)



**A.Y. McDonald Mfg. Co.**  
P.O. Box 508  
Dubuque, IA 52004-508

**Toll Free:** 1-800-292-2737  
**Fax:** 1-800-832-9296  
**Hours:** 7:00 a.m. – 5:00 p.m., CST

[sales@aymcdonald.com](mailto:sales@aymcdonald.com)  
[www.aymcdonald.com](http://www.aymcdonald.com)

A.Y. McDonald considers the information on this assembly drawing correct when published. Item and option availability, including specifications, are subject to change without notice.

**Submitted by:**