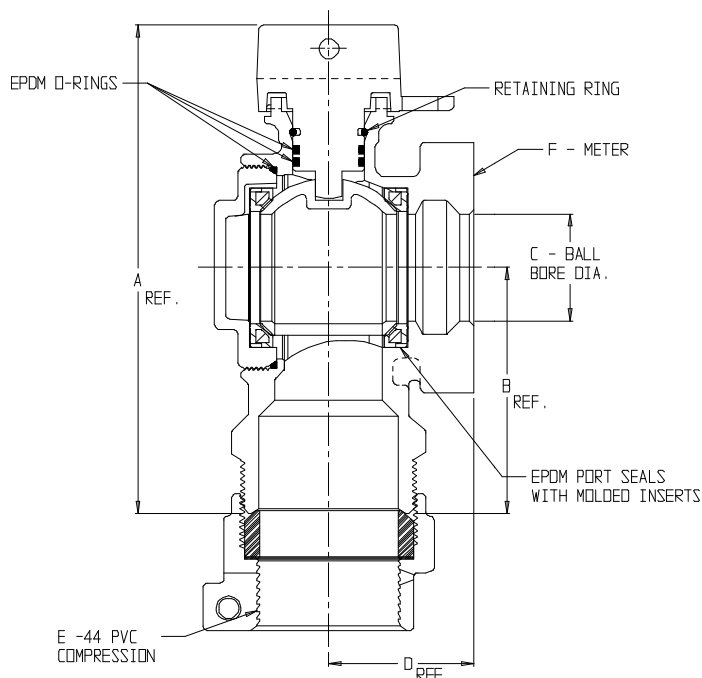


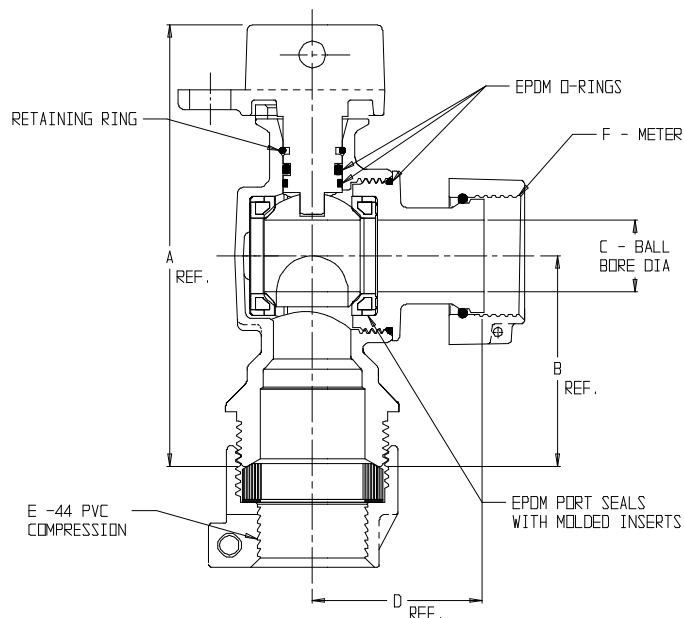
SUBMITTAL DATA SHEET

NL Ball Style Meter Stop – 74602B-44

-44 PVC Compression x Meter



| MODEL | SIZE | A | B | C | D | E | F |
|-----------|-------|------|------|------|------|-------|------------|
| 74602B-44 | 1 1/2 | 6.83 | 3.44 | 1.50 | 2.03 | 1 1/2 | 1 1/2 |
| 74602B-44 | 2 | 7.46 | 3.75 | 2.00 | 2.84 | 2 | 1 1/2 OR 2 |



| MODEL | SIZE | A | B | C | D | E | F |
|-----------|---------------|------|------|------|------|-----|----------------|
| 74602B-44 | 3/4 | 4.63 | 2.21 | .75 | 1.78 | 3/4 | 5/8 X 3/4, 3/4 |
| 74602B-44 | 1 X 3/4 X 3/4 | 4.96 | 2.55 | .75 | 1.78 | 3/4 | 5/8 X 3/4, 3/4 |
| 74602B-44 | 1 | 5.18 | 2.50 | 1.00 | 2.46 | 1 | 1 |

SUBMITTAL INFORMATION

- Manufactured in compliance with ANSI/AWWA C800 (latest revision)
- Brass components in contact with potable water conform to ASTM B584, UNS C89833 (latest revision) and identified with "NL"
- Certified to NSF/ANSI 61 and NSF/ANSI 372
- Brass components not in contact with potable water conform to ASTM B62 and ASTM B584, UNS C83600 -85-5-5-5 (latest revision)
- PTFE coated brass ball
- Rated for 300 PSIG water pressure
- Blow out proof EPDM port seals
- End piece joint sealed with an EPDM o-ring and thread locker



A.Y. McDonald Mfg. Co.
P.O. Box 508
Dubuque, IA 52004-508

Toll Free: 1-800-292-2737
Fax: 1-800-832-9296
Hours: 7:00 a.m. – 5:00 p.m., CST

sales@aymcdonald.com
www.aymcdonald.com

A.Y. McDonald considers the information on this assembly drawing correct when published. Item and option availability, including specifications, are subject to change without notice.

Submitted by:

09-14