

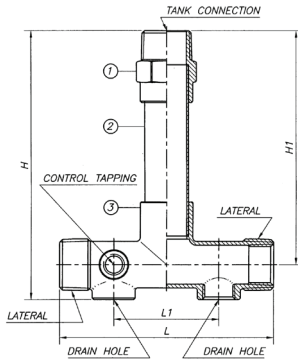
SUBMITTAL DATA SHEET

No-Lead Bronze Insert Fittings & Tank Tees No-Lead Bronze Tank Tees



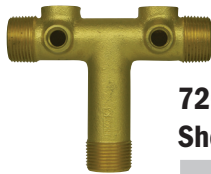
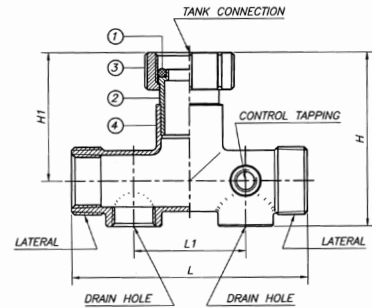
72045
Two Hole

Size	H	H1	L	L1
1" x 11"	11	10.2	5.5	2.7
1" x 14"	14	13	5.5	2.7
1 1/4" x 11"	11	10	5.7	2.7
1 1/4" x 14"	14	13	5.7	2.7
1 1/4" x 16"	17.3	16.2	5.7	2.7



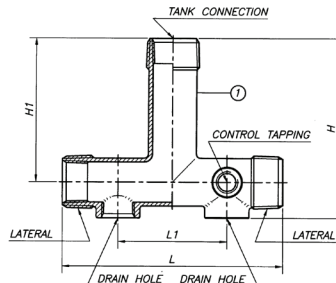
72045T
Two Hole

Size	H	H1	L	L1
1" x 3/4"	3.5	2.7	5.5	2.7
1 1/4" x 1"	4	2.9	5.7	2.7



72045SP
Short Pattern - Two Hole

Size	H	H1	L	L1
1" x 4 1/2"	4.5	3.6	5.5	2.7
1 1/4" x 4 1/2"	4.5	3.3	5.7	2.7



NO-LEAD: The weighted average of the wetted surface of this no-lead product contacted by consumable water contains less than one quarter of one percent (0.25%) lead.



A.Y. McDonald Mfg. Co.
P.O. Box 508
Dubuque, IA 52004-0508

Toll Free: 1-800-292-2737
Fax: 1-800-832-9296
Hours: 7:00 a.m. - 5:00 p.m., CST

sales@aymcdonald.com
www.aymcdonald.com

A.Y. McDonald considers the information on this assembly drawing correct when published. Item and option availability, including specifications, are subject to change without notice.

Submitted by: