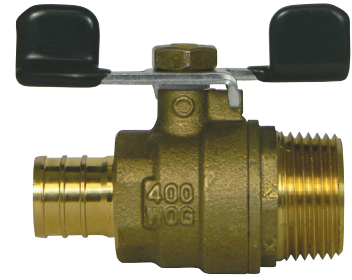


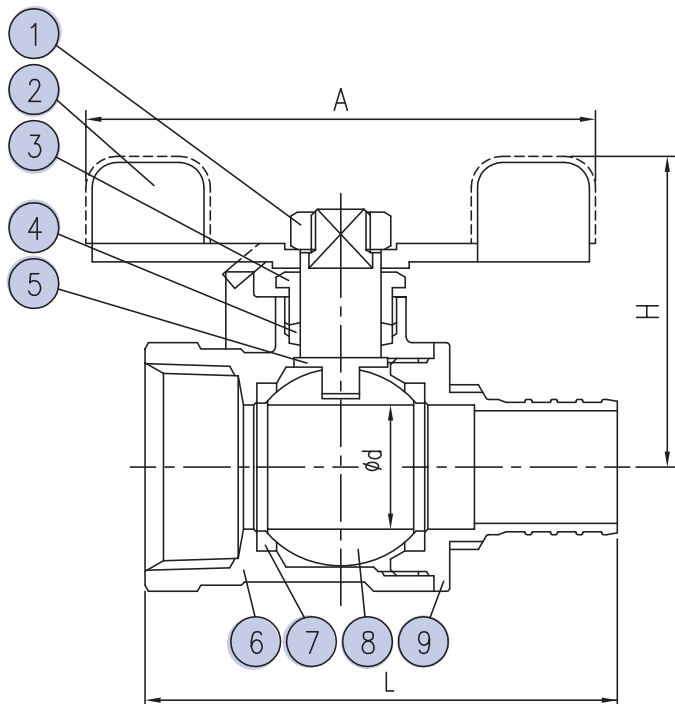
# SUBMITTAL DATA SHEET

## No-Lead Pex Ball Valves Standard Port - Pex Ball Valve w/Drain - 72030MP

Pex x MNPT



A.Y. McDonald Mfg. Co. Standard Port Ball Valves are constructed of heavy duty no-lead brass and can be used in commercial, industrial and residential applications. This is a standard port valve with excellent flow characteristics.



### Materials

No.	Part	Material
1	Nut	Steel
2	Handle	Steel
3	Stem Gland Screw	No-Lead Brass
4	Stem Packing	Teflon
5	Stem	No-Lead Brass
6	Body	No-Lead Brass
7	Ball Disc Packing	Teflon
8	Ball Disc	No-Lead Brass
9	End Plug	No-Lead Brass

### Dimensions

Size	L	H	D	A
1/2"	2.48	1.29	.39	2.71
3/4"	2.63	1.45	.59	2.71

### SUBMITTAL INFORMATION

- Sizes: 1/2" - 3/4"
- 400 WOG
- Pex ends conform to ASTM F1807
- Blow out proof stem

**NO-LEAD:** The weighted average of the wetted surface of this no-lead product contacted by consumable water contains less than one quarter of one percent (0.25%) lead.



**A.Y. McDonald Mfg. Co.**  
P.O. Box 508  
Dubuque, IA 52004-0508

**Toll Free:** 1-800-292-2737  
**Fax:** 1-800-832-9296  
**Hours:** 7:00 a.m. - 5:00 p.m., CST

[sales@aymcdonald.com](mailto:sales@aymcdonald.com)  
[www.aymcdonald.com](http://www.aymcdonald.com)

A.Y. McDonald considers the information on this assembly drawing correct when published. Item and option availability, including specifications, are subject to change without notice.

**Submitted by:**