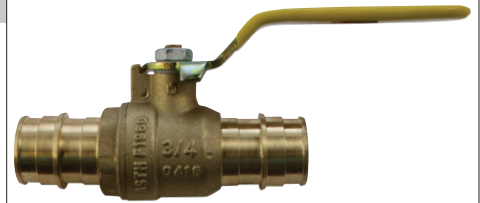


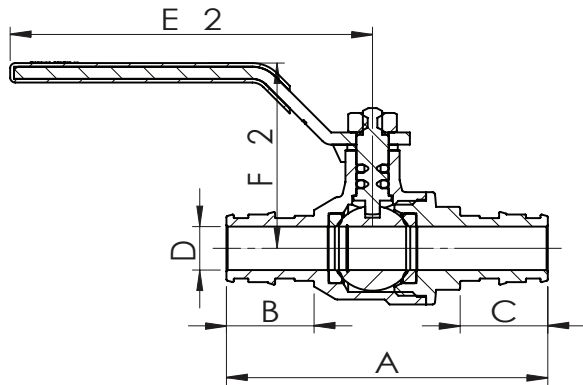
SUBMITTAL DATA SHEET

No-Lead Pex Ball Valves - Specialty Ball Valves Expansion Pex Ball Valve - 72030EXP

Expansion Pex x Expansion Pex

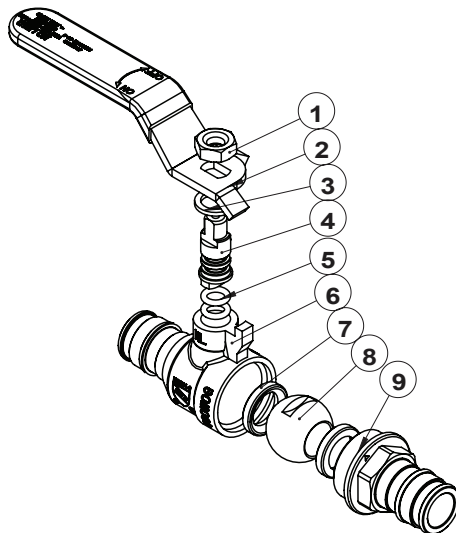


A.Y. McDonald Mfg. Co. No-Lead Expansion Pex Ball Valves are constructed from heavy duty no-lead brass and are designed for use with potable water in commercial, industrial, and residential applications.



Dimensions

Size	A	B	C	D	E	F	Weight
1/2"	2.60	0.71	0.71	0.39	2.95	1.50	0.28
3/4"	3.21	0.94	0.94	0.59	3.17	1.57	0.42
1"	3.98	1.18	1.18	0.81	4.17	1.97	0.77



Materials

No.	Part	Material
1	Hex-nut	Zinc
2	Handle	Zinc
3	Packing Gland	PTFE
4	Stem	No-Lead Brass
5	O-Ring	EPDM
6	Body	No-Lead Brass
7	Seat	PTFE
8	Ball	No-Lead Brass
9	Bonnet	No-Lead Brass

SUBMITTAL INFORMATION

- Sizes: 1/2" - 1"
- Double O-ring packing
- Pex ends conform to ASTM F1960
- Blowout proof stem
- 400 CWP
- NSF-372
- NSF/ANSI 61-2013
- NSF/ANSI 14-2010a



NO-LEAD: The weighted average of the wetted surface of this no-lead product contacted by consumable water contains less than one quarter of one percent (0.25%) lead.



A.Y. McDonald Mfg. Co.
P.O. Box 508
Dubuque, IA 52004-0508

Toll Free: 1-800-292-2737
Fax: 1-800-832-9296
Hours: 7:00 a.m. - 5:00 p.m., CST

sales@aymcdonald.com
www.aymcdonald.com

A.Y. McDonald considers the information on this assembly drawing correct when published. Item and option availability, including specifications, are subject to change without notice.

Submitted by: