

For Residential and Commercial Applications

Job Name		Engineer / Architect	
Job Location		Wholesaler	
Submittal Date		Contractor	

73 Series Hose Barb Splicer

Use: For use with plastic or rubber tubing. Installation requires a hose clamp

Operating Specifications:

Temperature: -40° - 160° F

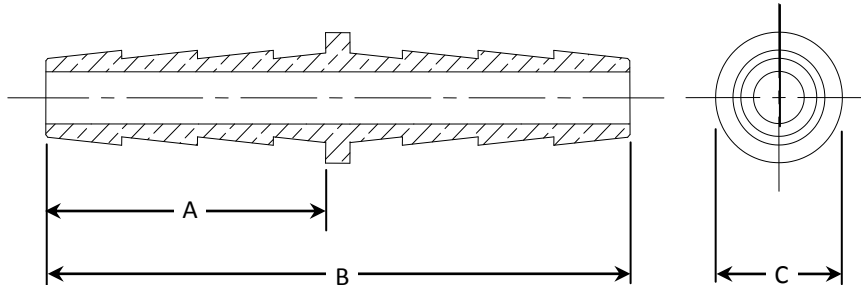
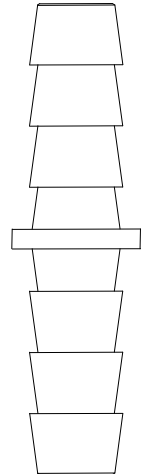
Working Pressure: 150 PSI

MATERIAL SPECIFICATIONS

Fitting body C36000 brass

PART DIMENSIONS (Inches)

Model	DIM. A	DIM. B	DIA. C
73-3	.69	1.44	.31
73-4	.75	1.56	.38
73-5	.97	2.00	.353
73-6	.97	2.00	.415
73-8	.97	2.00	.530
73-10	.97	2.00	.75



Part Listing:

<input type="checkbox"/>	73-3 B	1/8" Hose Barb, both ends, bulk
<input type="checkbox"/>	73-4	1/4" Hose Barb, both ends
<input type="checkbox"/>	73-4 B	1/4" Hose Barb, both ends, bulk
<input type="checkbox"/>	73-5	5/16" Hose Barb, both ends
<input type="checkbox"/>	73-5 B	5/16" Hose Barb, both ends, bulk
<input type="checkbox"/>	73-6	3/8" Hose Barb, both ends
<input type="checkbox"/>	73-6 B	3/8" Hose Barb, both ends, bulk
<input type="checkbox"/>	73-8	1/2" Hose Barb, both ends
<input type="checkbox"/>	73-8 B	1/2" Hose Barb, both ends, bulk
<input type="checkbox"/>	73-10 B	5/8" Hose Barb, both ends, bulk

This specification and all information contained herein is the confidential and exclusive property of BrassCraft Manufacturing, and shall not be disclosed to others without the written consent of BrassCraft. This specification must be returned to BrassCraft if requested.

BrassCraft®