

XS103TWKDAC – RESIDENTIAL TUB/SHOWER

59 5/8 x 30 3/4 x 75 inches



FEATURES

- Three-piece tub-shower
- Smooth wall
- Ergonomic backrest
- Installed acrylic grab bar
- Molded toiletry shelves
- Slip-resistant textured bottom
- Left or right hand drain
- AcrylX™ applied acrylic surface
- ArmorCore™ reinforcement
- Regional availability:
Pacific Northwest
- Limited lifetime warranty*

OPTIONS

- Factory installed assisted care grab bars
- Designer drain, waste & overflow

COLOR OPTIONS

Stock	Upgraded
Almond	Biscuit
White	Bone

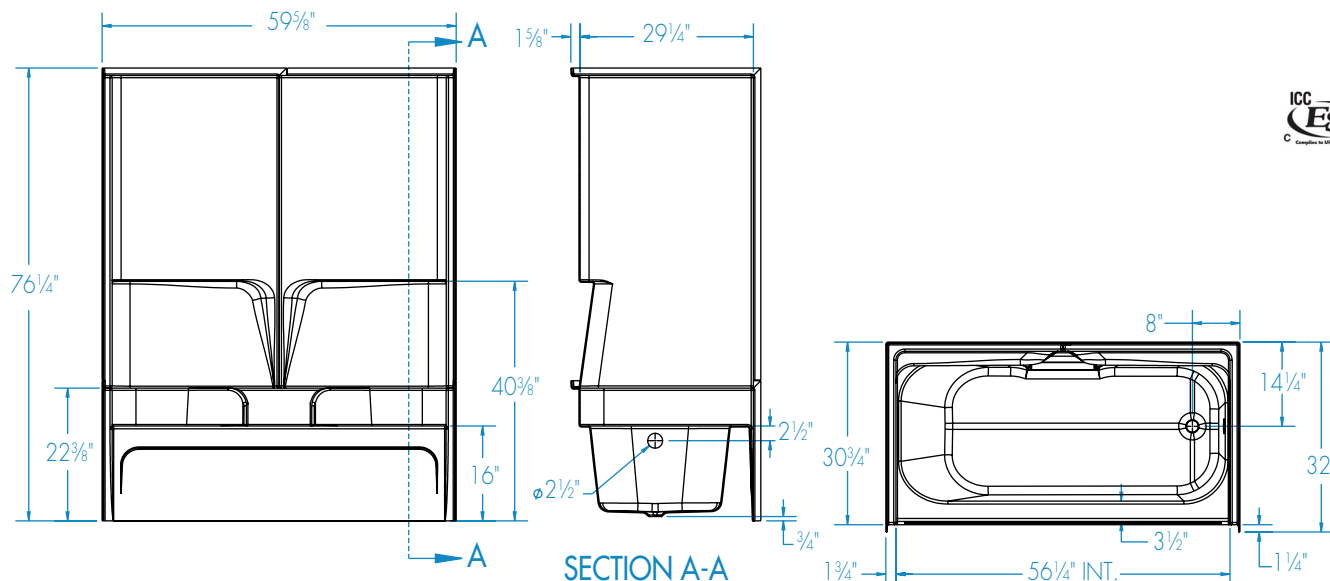
cdx
comfortdesigns
with the strength of
ARMORCORE™



* See terms and conditions for details

XS103TWKDAC

59 5/8 x 30 3/4 x 75 inches



FEATURES

Dimensional Tolerance $\pm \frac{3}{8}$ ". Dimensions needed for site preparation should be measured from the unit. Comfort Designs assumes no responsibility for preparatory work.

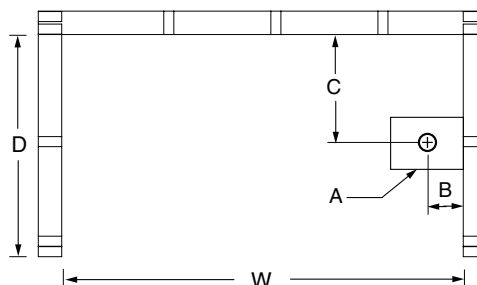
Model #	Material	Wall Finish	Drain	Net Wt. lbs	Pkg. Wt. lbs
Tub-Shower #XS103TWKDAC	AcrylIX™	Smooth wall	LH or RH	136	141

DIMENSIONS

Specifications	inches
Width: Overall / Net	59 5/8
Depth: Overall / Net	32 / 30 3/4
Height: Overall / Net	76 1/4 / 75
Enclosure Opening	56 1/4
Skirt Height	16
Drain Rough-In (from Back Wall)	14 1/4
Drain Rough-In (from Side Wall)	8
Drain: Diameter / Clearance	2 / 3/4

FRAMING DIMENSIONS inches

Type	D Depth	W Width	H Height	A	B	C
Alcove	32	59 3/4	—	Box Out	8	14 1/4



SUMP DATA

Top of Drain to Bottom of Overflow	Capacity to Overflow gal	Min. Operating Capacity gal	WIDTH @ centerline		DEPTH @ centerline	
			Top	Bottom	Top	Bottom