

# XS104AC – RESIDENTIAL TUB/SHOWERS

60 x 36 1/8 x 78 1/4 inches



## FEATURES

- Tub-shower
- Smooth wall finish
- Ergonomic backrest
- Molded toiletry shelves
- Slip-resistant textured bottom
- Left or right hand drain
- AcrylX™ applied acrylic surface
- ArmorCore™ reinforcement
- Regional availability:  
Pacific Northwest
- Limited lifetime warranty\*

## OPTIONS

- Factory installed assisted care grab bars
- Designer drain, waste & overflow

## COLOR OPTIONS

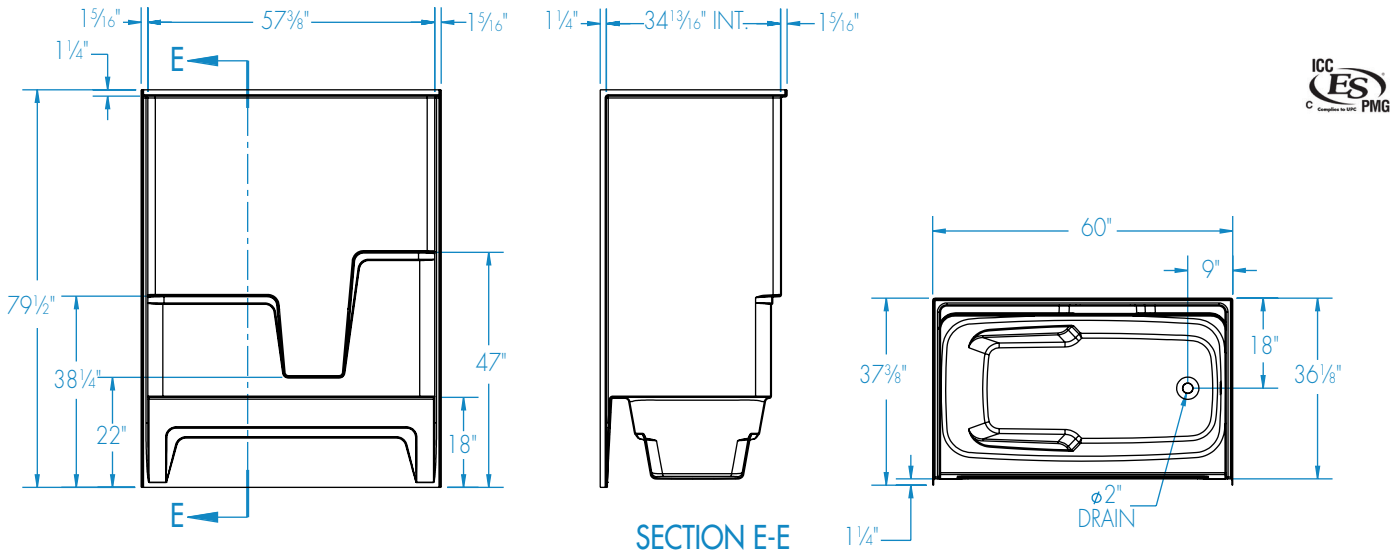
Stock	Upgraded
Almond	Biscuit
White	Bone



\* See terms and conditions for details

# XS104AC

60 x 36 1/8 x 78 1/4 inches



## FEATURES

Dimensional Tolerance  $\pm \frac{3}{16}$ ". Dimensions needed for site preparation should be measured from the unit. Comfort Designs assumes no responsibility for preparatory work.

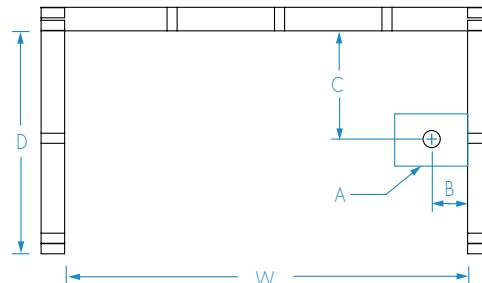
Model #	Material	Wall Finish	Jets	Motor	Controls	Drain	Net Wt. lbs	Pkg. Wt. lbs
Tub-Shower #XS104AC	AcrylX™	Smooth	—			LH or RH	134	139

## DIMENSIONS

Specifications	inches
Width: Overall / Net	60
Depth: Overall / Net	37 3/8 / 36 1/8
Height: Overall / Net	79 1/2 / 78 1/4
Enclosure Opening	57 3/8
Skirt Height	18
Drain Rough-In (from Back Wall)	18
Drain Rough-In (from Side Wall)	9
Drain: Diameter / Clearance	2 / 1

## FRAMING DIMENSIONS inches

Type	D Depth	W Width	H Height	A	B	C
Alcove	37 3/8	60 1/8	—	Box Out	9	18



## SUMP DATA

Top of Drain to Bottom of Overflow	Capacity to Overflow gal	Min. Operating Capacity gal	WIDTH @ centerline		DEPTH @ centerline	
			Top	Bottom	Top	Bottom