

XS106AC – RESIDENTIAL TUB/SHOWERS

60 x 30 $\frac{5}{8}$ x 76 $\frac{5}{8}$ inches



FEATURES

- Tub-shower
- Smooth wall finish
- Ergonomic backrest
- Molded toiletry shelves
- Slip-resistant textured bottom
- Left or right hand drain
- AcrylX™ applied acrylic surface
- ArmorCore™ reinforcement
- Regional availability:
Pacific Northwest
- Limited lifetime warranty*

OPTIONS

- Factory installed assisted
care grab bars
- Designer drain, waste
& overflow

COLOR OPTIONS

Stock	Upgraded
Almond	Biscuit
White	Bone

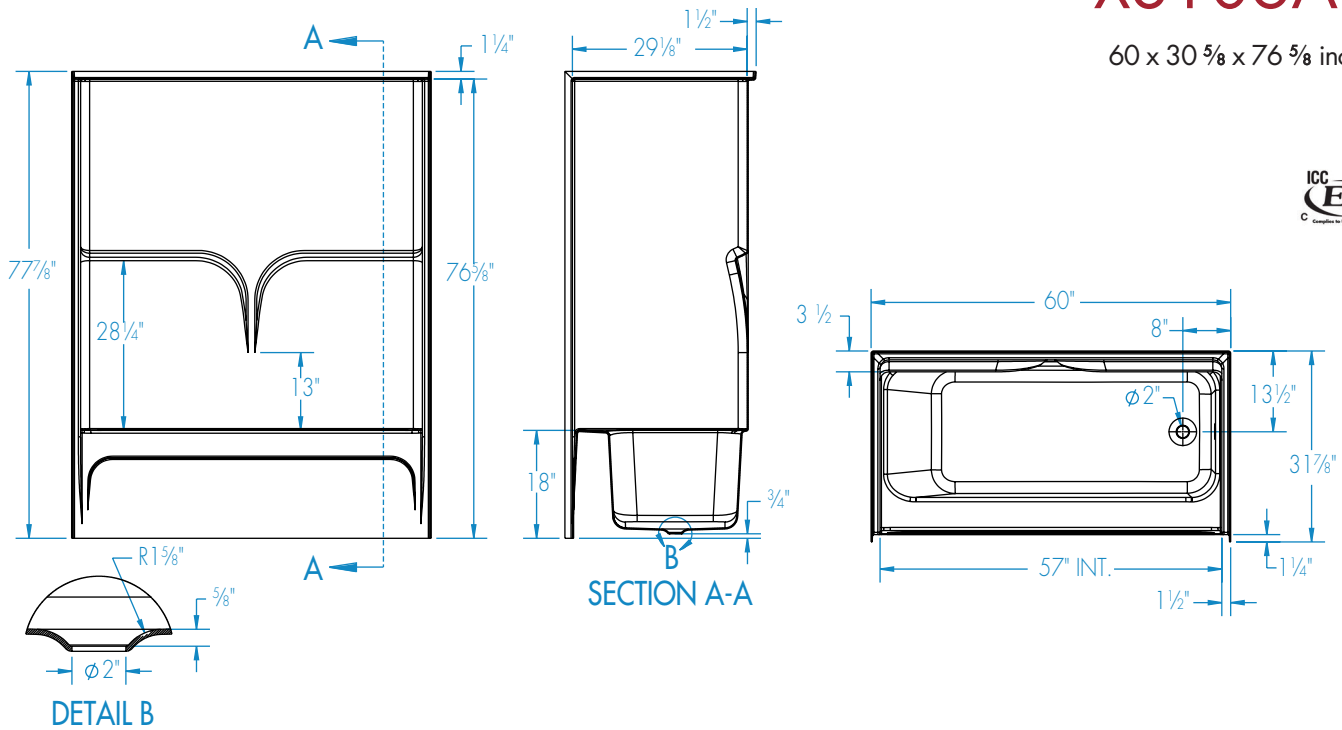
cdx
comfortdesigns
with the strength of
ARMORCORE™



* See terms and conditions for details

XS106AC

60 x 30 5/8 x 76 5/8 inches



FEATURES lbs Dimensional Tolerance $\pm \frac{3}{16}$ ". Dimensions needed for site preparation should be measured from the unit. Aquatic assumes no responsibility for preparatory work.

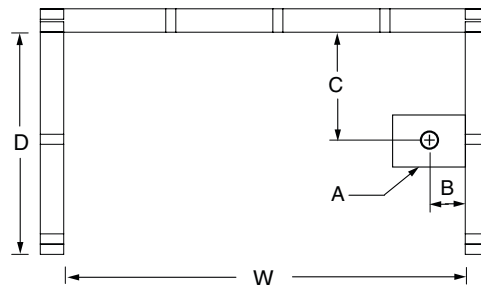
Model #	Material	Wall Finish	Jets	Motor	Controls	Drain	Net Wt.	Pkg. Wt.
Tub-Shower #XS106AC	AcrylX™	Smooth	–	–	–	LH or RH	135	140

DIMENSIONS

Specifications	inches
Width: Overall / Net	60
Depth: Overall / Net	31 7/8 / 30 5/8
Height: Overall / Net	77 7/8 / 76 5/8
Enclosure Opening	57
Skirt Height	18
Drain Rough-In (from Back Wall)	13 1/2
Drain Rough-In (from Side Wall)	8
Drain: Diameter / Clearance	2 / 3/4

FRAMING DIMENSIONS inches

Type	D Depth	W Width	H Height	A	B	C
Alcove	31 7/8	60 1/8	–	Box Out	8	13 1/2



SUMP DATA

Top of Drain to Bottom of Overflow	Capacity to Overflow gal	Min. Operating Capacity gal	WIDTH @ centerline		DEPTH @ centerline	
			Top	Bottom	Top	Bottom