

XS103TAC – RESIDENTIAL BATH

59 1/4 x 30 3/8 x 22 3/8 inches



FEATURES

- Alcove bath
- Ergonomic backrest
- Integral tiling flange (3T)
- Slip-resistant textured bottom
- Left or right hand drain
- AcrylX™ applied acrylic surface
- ArmorCore™ reinforcement
- Regional availability:
Pacific Northwest
- Limited lifetime warranty*

OPTIONS

- Designer drain, waste
& overflow

COLOR OPTIONS

Stock	Upgraded
Almond White	Biscuit Bone

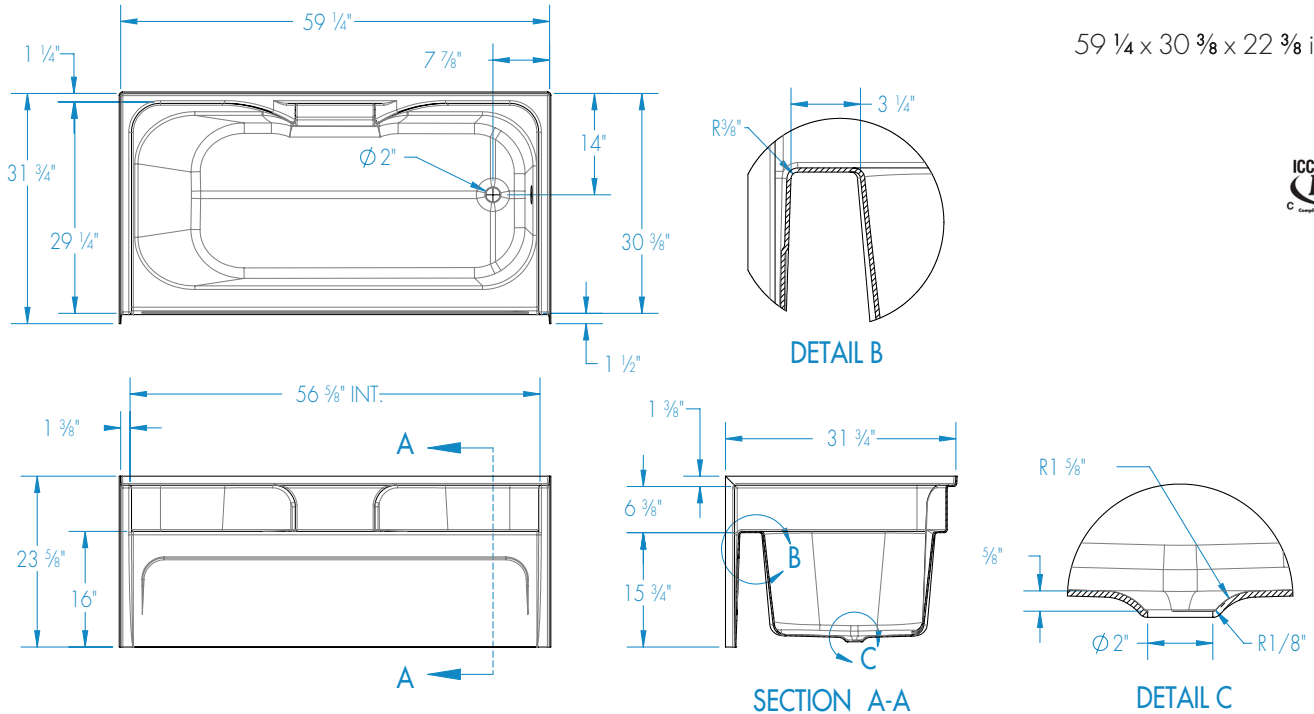
cdx
comfortdesigns
with the strength of
ARMORCORE™



* See terms and conditions for details

XS103TAC

59 1/4 x 30 3/8 x 22 3/8 inches



FEATURES

Dimensional Tolerance $\pm \frac{3}{8}$ ". Dimensions needed for site preparation should be measured from the unit. Comfort Designs assumes no responsibility for preparatory work.

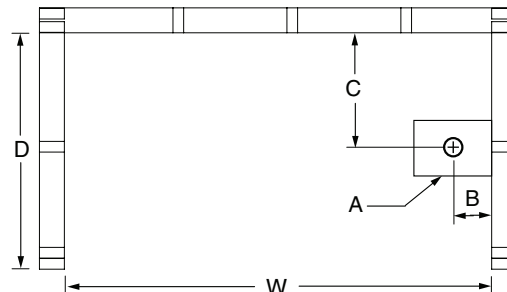
Model #	Material	Jets	Motor	Controls	Drain	Net Wt. lbs	Pkg. Wt. lbs
Soaker #XS103TAC	AcrylX™	0	—	—	LH or RH	81	86

DIMENSIONS

Specifications	inches
Width: Overall / Net	59 1/4
Depth: Overall / Net	31 3/4 / 30 3/8
Height: Overall / Net	23 5/8 / 22 1/8
Enclosure Opening	56 5/8
Skirt Height	15 3/4
Drain Rough-In (from Back Wall)	14
Drain Rough-In (from Side Wall)	7 7/8
Drain: Diameter / Clearance	2 / 3/4

FRAMING DIMENSIONS inches

Type	D Depth	W Width	H Height	A	B	C
Alcove	31 3/4	59 3/8	—	Box Out	7 7/8	14



SUMP DATA

Top of Drain to Bottom of Overflow	Capacity to Overflow gal	Min. Operating Capacity gal	WIDTH @ centerline		DEPTH @ centerline	
			Top	Bottom	Top	Bottom