



1-1/4" GRAB BARS WITH CONCEALED FLANGES, PEENED FINISH TECHNICAL SPECIFICATION

Job Name _____	Item # _____
Location _____	
Engineer _____	Contractor _____
PO # _____	Tag _____
Representative _____	

SPECIFICATIONS

Dearborn Brass Stainless Steel Grab Bars are designed for use in hospitals, hotels, government facilities, commercial building and residential home settings. ADA Compliant.

DESCRIPTION

- Satin Finish
- Bar 18 ga. 304 Stainless Steel
- Flange: 14 ga. 304 Stainless Steel
- Screws: #10 x 2" Self Tapping Stainless Steel

APPROVALS AND LISTINGS

ASTM F 446 with 1-1/2" clearance
ANSI A117.1

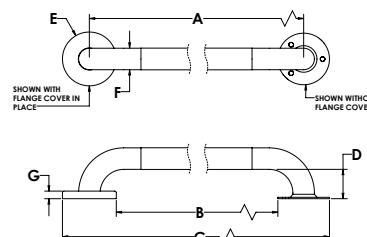


PRODUCT SELECTOR

1-1/4" GRAB BARS WITH CONCEALED FLANGES PEENED FINISH

✓	Product Number	Size	Description	Carton Quantity
	DB8712P	1-1/4" x 12"	Stainless Steel Grab Bar w/ Concealed Flange, Peened Finish	4
	DB8716P	1-1/4" x 16"	Stainless Steel Grab Bar w/ Concealed Flange, Peened Finish	4
	DB8724P	1-1/4" x 24"	Stainless Steel Grab Bar w/ Concealed Flange, Peened Finish	4
	DB8736P	1-1/4" x 36"	Stainless Steel Grab Bar w/ Concealed Flange, Peened Finish	4
	DB8742P	1-1/4" x 42"	Stainless Steel Grab Bar w/ Concealed Flange, Peened Finish	4

Data is subject to manufacturing tolerances.



DIMENSIONS

[A]:	Length A	See Chart A.1	[E]:	Diameter E	3"
[B]:	Length B	See Chart A.1	[F]:	Diameter F	1.25"
[C]:	Length C	See Chart A.1	[G]:	Cover Height G	0.44"
[D]:	Height D	1.75"			

A.1 - LENGTHS

	Size 1-1/4" x 12"	Size 1-1/4" x 16"	Size 1-1/4" x 24"	Size 1-1/4" x 36"	Size 1-1/4" x 42"
Length A	12"	16"	24"	36"	42"
Length B	9"	13"	21"	33"	39"
Length C	15"	19"	27"	39"	45"

Access BIM/Revit content through www.oatey.com