



Sink Faucet Wallmount

8" Wallmount WITH Integral Check Stops - CER-TECK®

Model No: 28C2385

COMPLIES WITH:

- CSA certified
- Complies to ASME A112.18.1/CSA B125.1
- Certified under ASSE 1001 and CSA Standard B64.1.1
- (Contact Delta Representative for State and/or Local Approvals)



SPECIFICATION:

- 203 mm (8") centers cast brass wallmount service sink faucet
- Centers adjustable from 7.75" to 8.25" unless AC option selected
- Two handle
- With integral check stops
- Polished chrome plated finish
- Heavy duty 1/2" IPS brass pipe rigid pail hook spout
- CER-TECK® 1/4 turn ceramic disk structures
- Spout#: 3 - 267mm (10 1/2") Long Rigid Spout with Pail Hook, ADJUSTABLE Top/Bottom Brace
- Outlet#: 8 - Body mounted Angle Vacuum Breaker - Garden Hose End Outlet on spout
- Handle#: 5 - VR 152 mm (6") Wrist Handles-ADA Compliant-Sanitary Hoods-Color indexed-Vandal resistant(VR) screws

OPERATION:

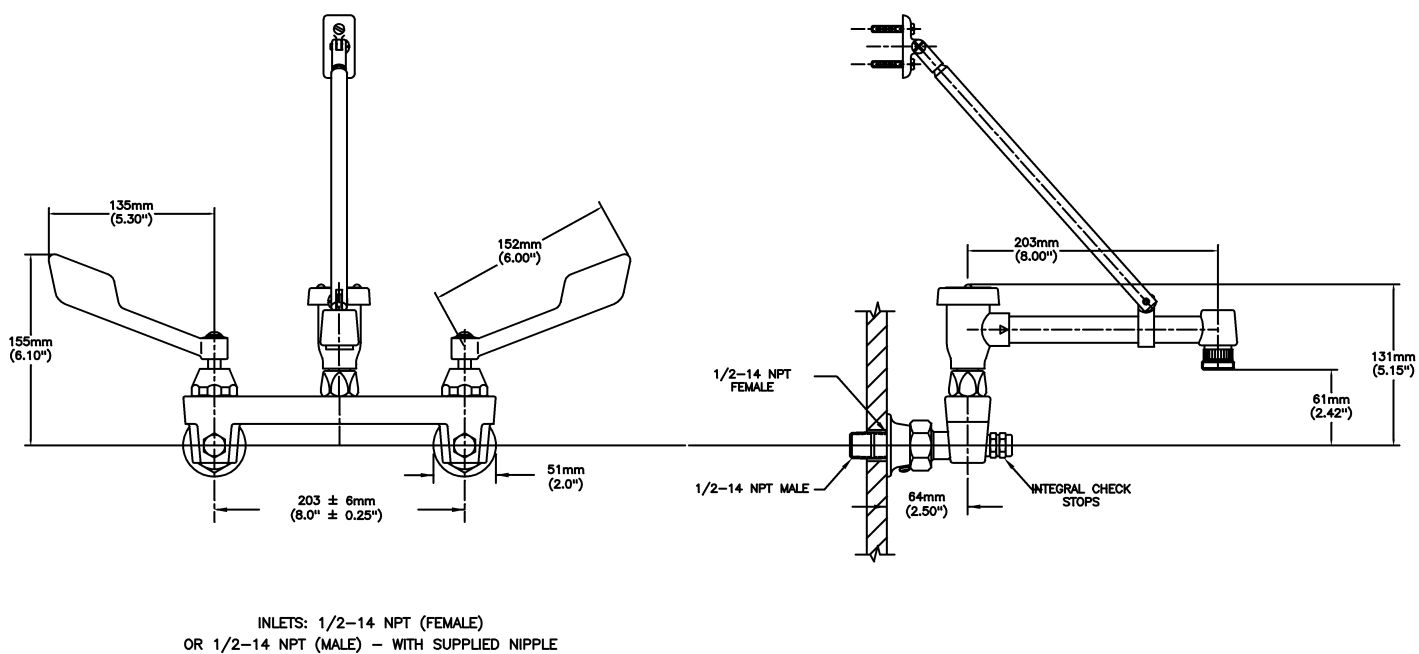
- Not Available

(Dimensional drawing on following page)

Delta reserves the right (1) to make changes to specifications and materials, and (2) to change or discontinue models, both without notice or obligation. Dimensions are for reference. Measurement may vary plus or minus 6mm(0.25"). Mounting locations are suggested only. Check with local codes for requirements in your area. This spec was produced December 19, 2016.

Delta Faucet Company - 55 East 111th St. - Indianapolis, Indiana, USA 46280 - (317) 848-1812
Delta Faucet Canada - 395 Matheson Blvd E - Mississauga, Ontario, Canada L4Z 2H2 - (905) 712-3030

Model No: 28C2385



Delta reserves the right (1) to make changes to specifications and materials, and (2) to change or discontinue models, both without notice or obligation. Dimensions are for reference. Measurement may vary plus or minus 6mm(0.25"). Mounting locations are suggested only. Check with local codes for requirements in your area. This spec was produced December 19, 2016.

Delta Faucet Company - 55 East 111th St. - Indianapolis, Indiana, USA 46280 - (317) 848-1812
 Delta Faucet Canada - 395 Matheson Blvd E - Mississauga, Ontario, Canada L4Z 2H2 - (905) 712-3030