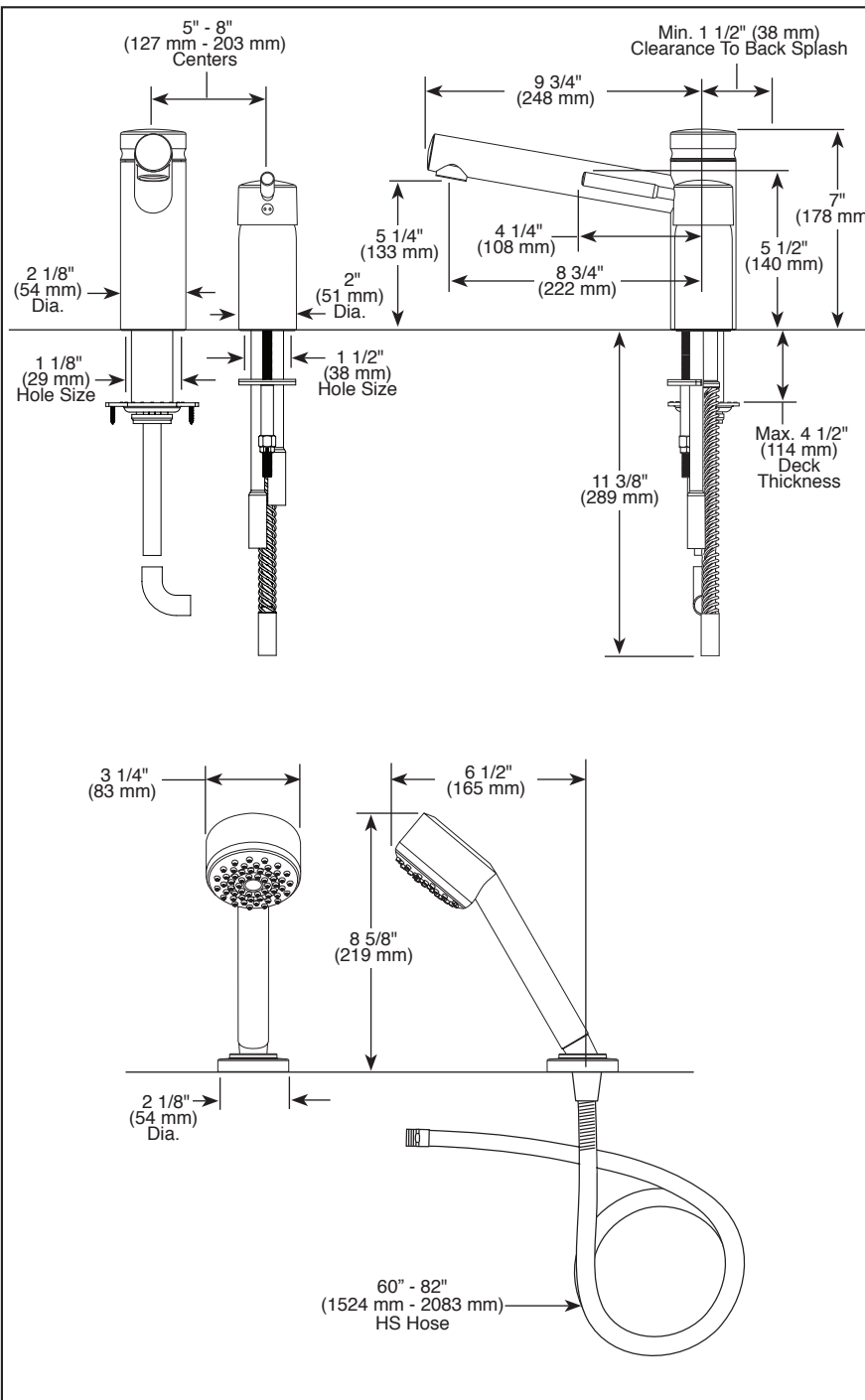


Submitted Model No.: _____

Specific Features: _____



▲ Designate Proper Finish Suffix

BRIZO®

BATH VALVES

- Quiescence® Single Handle Roman Tub Valve
- Two Hole Applications (67114 Series)
- Three Hole Applications (67214 Series)
- Temperature and Volume Controlled with Single Handle
- Hand Held Retractable Shower (67214 Series)
- Flexible Ledge Mount

STANDARD SPECIFICATIONS:

- Two and three hole mount
- Control mechanism shall be of the rotating ceramic cartridge type
- Temperature and volume controlled with single handle
- Spout with integral diverter, vacuum breaker not required (67214)
- Handshower flows 2.00 gpm @ 80 psi (67214)
- Minimum 4 1/2" (114 mm) to maximum 10" (254 mm) distance between holes.
- Conventional installation kit adjusts to 4 1/2" maximum deck thickness
- Certified dual check valves

WARRANTY

- Lifetime limited warranty on parts (other than electronic parts and batteries) and finishes: or, for commercial users, for 5 years from date of purchase.
- 5 year limited warranty on electronic parts (other than batteries); or, for commercial users, for 1 year from the date of purchase. No warranty is provided on batteries.



COMPLIES WITH:

- ASME A112.18.1 / CSA B125.1
- Indicates compliance to ICC/ANSI A117.1 - Valve control only
- EPA WaterSense® - Applies to handshower only - RP61593*

