



# LYNDON<sup>®</sup>

## 33" WALL-HUNG LAVATORY



**D20076001.415** - SINGLE-HOLE

### **FEATURES**

---

- Fine fire clay construction with single hole
- Includes ceramic drain cap
- Works with any standard drain (drain not included)
- Hidden overflow
- Wall-hung installation optional  
(metal console legs available October 2017)
- Includes mounting kit

### **DIMENSIONS**

---

#### **NOMINAL DIMENSIONS**

32-3/4" x 17-11/16" x 8-9/16" (832 x 449 x 217 mm)

#### **BOWL INSIDE DIMENSIONS**

19-1/4" (489 mm) wide  
12" (306 mm) front to back  
5-1/2" (140 mm) depth

### **COLORS/FINISHES**

---

Canvas White (415)

### **COMPLIANCE CERTIFICATIONS**

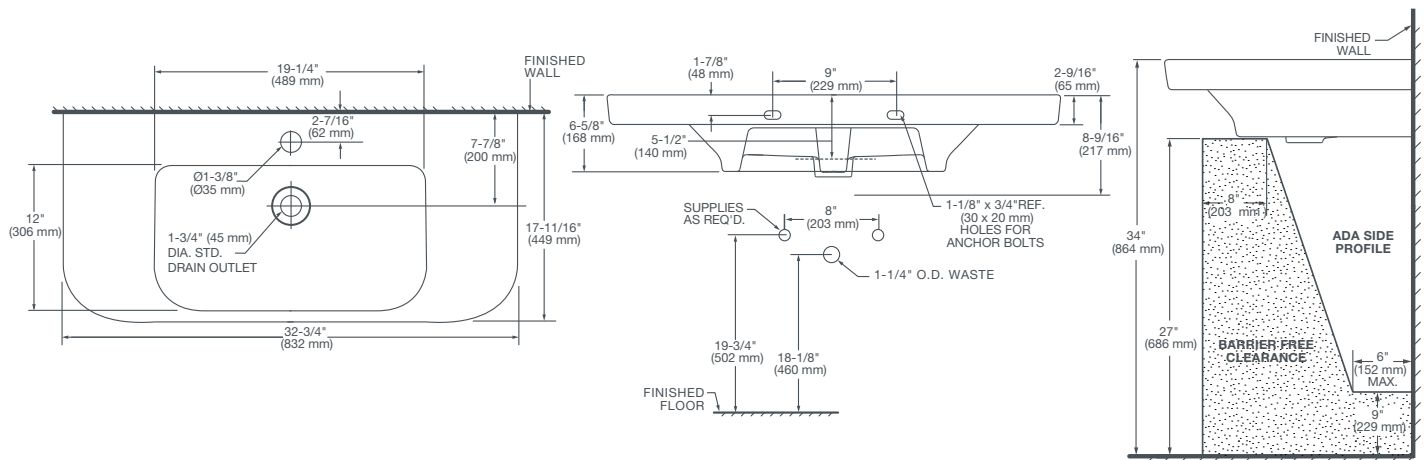
Meets or Exceeds ASME A112.19.2/CSA B45.1

ROUGH IN DIAGRAM SHOWN  
ON NEXT PAGE



# LYNDON<sup>®</sup>

## 33" WALL-HUNG LAVATORY



### NOTES:

Dimensions shown for location supplies and "P" trap are suggested. Provide suitable reinforcement for all wall supports.

Slab/pedestal anchors and mounting features to be furnished by others.

Fittings not included with fixture and must be ordered separately.

Installation Instructions supplied with lavatory.

### IMPORTANT:

Dimensions of fixtures are nominal and may vary within the range of tolerance established by ANSI standards.

These measurements are subject to change or cancellation. No responsibility is assumed for use of superseded or voided pages.

PART OF LIXIL