



AMERICAN STANDARD

FITZGERALD™

TWO-PIECE ROUND FRONT TOILET



ROUGH IN DIAGRAM SHOWN
ON REVERSE SIDE

D2205DA101.XXX

FEATURES

- Vitreous china
- Round front bowl design
- High efficiency (1.28 gpf/ 4.8 Lpf)
- 2" fully-glazed concealed trapway
- Includes design matched Duroplast slow-close seat
- Siphon action jetted bowl – 1,000 MaP
- PowerWash® rim scrubs bowl with each flush
- EverClean® surface inhibits the growth of stain and odor causing bacteria, mold and mildew on the surface
- 3" Flush valve with chemical resistant flapper
- 12" (305 mm) rough-in
- 16-1/2" (419 mm) rim height

DIMENSIONS

NOMINAL DIMENSIONS

27-7/8" x 15-1/16" x 31-3/16" (708 x 383 x 792 mm)

COLORS/FINISHES

Canvas White (415), Biscuit (071)

TOILET SEAT (INCLUDED)

Round Front, Slow Close, Topmount, Easy Lift Off

5004B10G.415 — Canvas White (415)

5004B10G.071 — Biscuit (071)

SEPARATE COMPONENTS

D24005A101.XXX Tank Only

D23005D000.XXX Round Front Bowl Only

5004B10G.XXX Seat

OPTIONAL TRIP LEVER FINISHES

7381344-200.XXXOA,

Satin Nickel (295), Polished Nickel (008),

Carbon Bronze (110)

COMPLIANCE CERTIFICATIONS

Meets or Exceeds ASME A112.19.2-2008/CSA B45.1-08

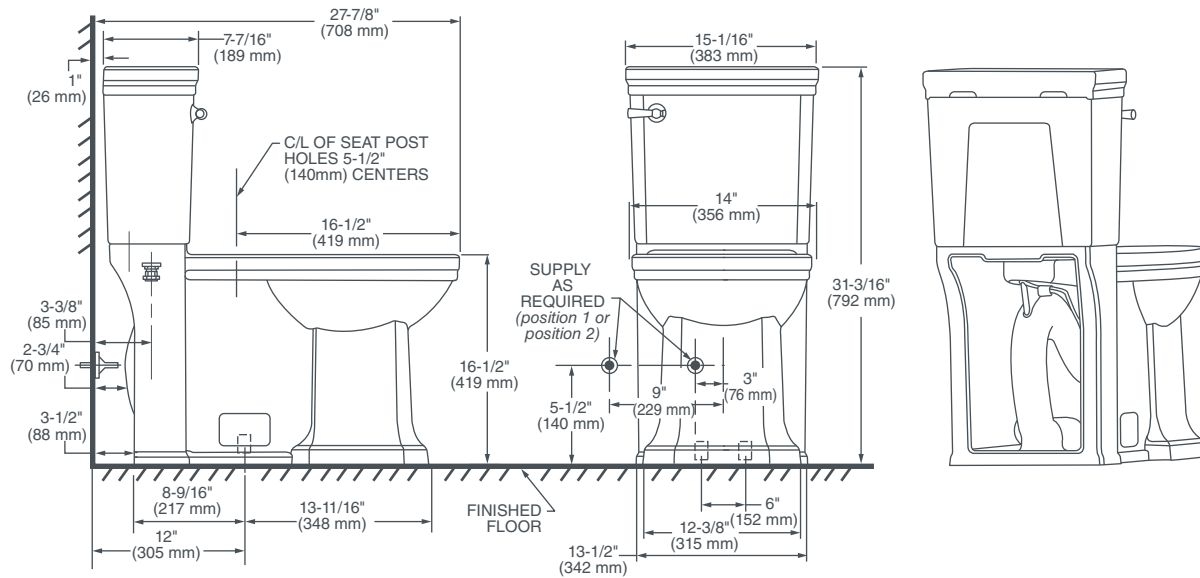
Includes Flush Performance, Ball Pass Diameter, Trap Seal Depth and all Dimensions



Meets the Americans with Disabilities Act Guidelines
and ANSI A117.1 Requirements for Accessible and
Usable Building Facilities-Check Local Codes.

FITZGERALD™

TWO-PIECE ROUND FRONT TOILET



IMPORTANT:

Water supply on the wall is required at 3" or 9" from centerline of the toilet (see rough-in).

First suggested position is hidden behind the toilet. The geometry of the toilet gives space for this installation.

The second suggested position is next to the toilet. Between these two positions, the space for the supply between wall and toilet is limited to 3-1/2". In this case, check your supply and hose dimensions.

NOTES:

This toilet is designed to rough-in at a minimum dimension of 12" (305mm) from finished wall to C/L of outlet.

Supply not included with fixture and must be ordered separately.

* Dimensions shown for location of supply is suggested.

IMPORTANT:

Dimensions of fixtures are nominal and may vary within the range of tolerance established by ANSI Standard A112.19.2.

These measurements are subject to change or cancellation. No responsibility is assumed for use of superseded or voided pages.