



RANDALL®
SINGLE LEVER
AND VESSEL FAUCETS



- Cast brass 5-3/4" spout and body
- Ceramic disc valve cartridges
- 3/8" Compression flexible hose supply connections
- Vessel faucet with or without Speed Connect® with 1-1/4" drain
- Lead Free—faucet contains ≤0.25% total lead content by weighted volume
- Maximum flow rate: 1.5 gpm (5.7 L/min)
- Low flow rate: 1.2 gpm (4.5 L/min)

CODES AND STANDARDS
Meets or Exceeds ASME A112.18.1/
CSA B125.1/NSF 61/Section 9

EPA WaterSense® High Efficiency
Lavatory Faucet Specification

Certified Compliant with 0.25% Weighted
Average Lead Content Regulations

AVAILABLE FINISHES	FINISH CODE
Polished Chrome	100
Brushed Nickel	144
Platinum Nickel	150



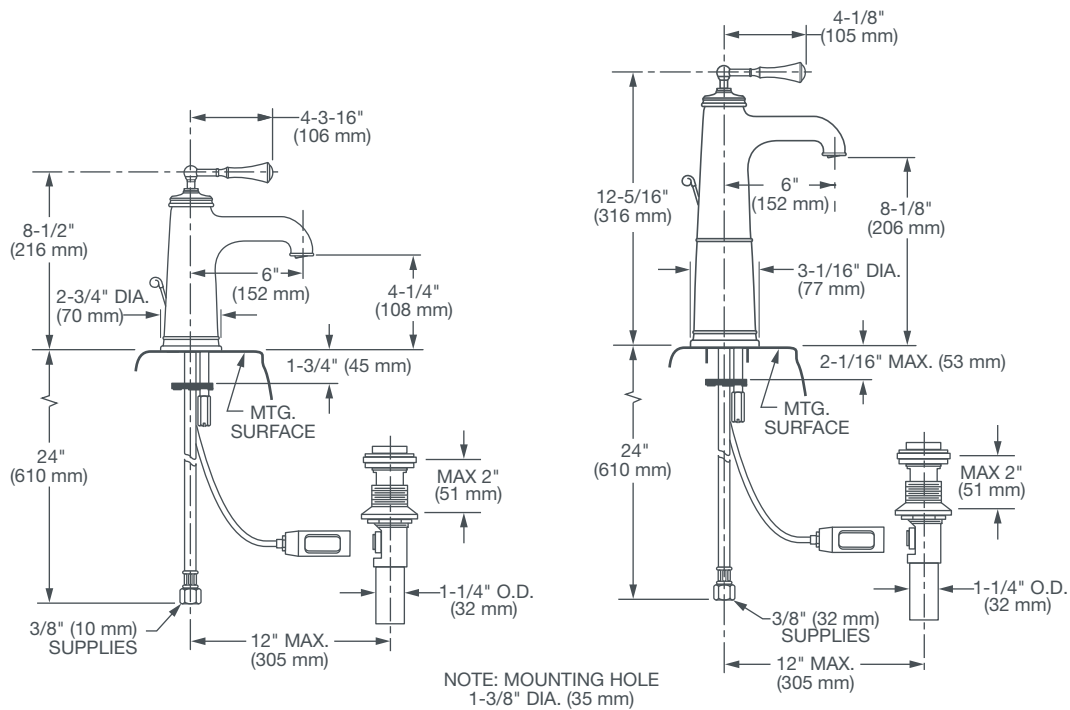
DESCRIPTION	PRODUCT NUMBER
1.5 gpm (5.7 L/min)	
Single Lever Lavatory Faucet	D35102100.XXX
Vessel Faucet with Drain	D35102151.XXX
Vessel Faucet without Drain	D35102150.XXX
1.2 gpm (4.5 L/min)	
Single Lever Lavatory Faucet	D3510210C.XXX
Vessel Faucet with Drain	D3510216C.XXX
Vessel Faucet without Drain	D3510215C.XXX

ROUGH-IN DIAGRAM
SHOWN ON NEXT PAGE



RANDALL®

SINGLE LEVER AND VESSEL FAUCETS



IMPORTANT: These measurements are subject to change or cancellation.
No responsibility is assumed for use of superseded or voided pages.

PART OF LIXIL