



# RANDALL®

## WALL MOUNT TUB FILLER WITH HAND SHOWER



- Wall mounted tub filler with hand shower and cradle
- Cast brass construction
- Ceramic disc valve cartridges
- Integral diverter
- Randall cross handles
- Maximum hand shower flow rate: 2.0 gpm (7.6 L/min)

### CODES AND STANDARDS

Meets or Exceeds ASME A112.18.1/CSA B125.1

### AVAILABLE FINISHES

Polished Chrome  
Brushed Nickel  
Platinum Nickel  
Satin Brass

### FINISH CODE

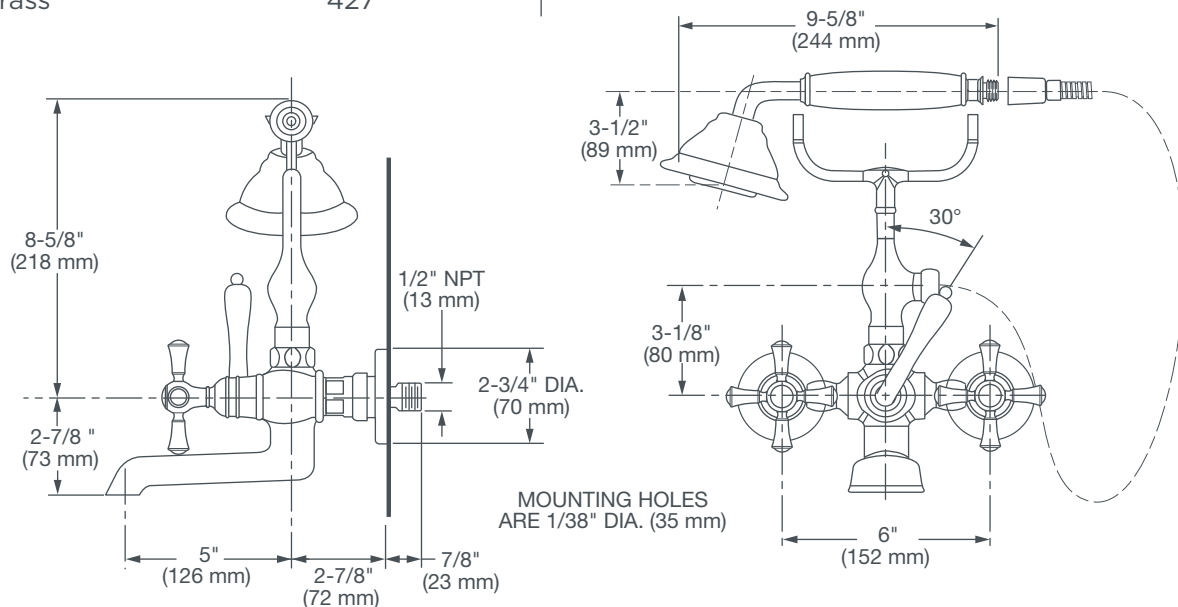
100  
144  
150  
427

### DESCRIPTION

Wall Mount Tub Filler  
with Hand Shower

### PRODUCT NUMBER

D35102980.XXX



**IMPORTANT:** These measurements are subject to change or cancellation.  
No responsibility is assumed for use of superseded or voided pages.

PART OF **LIXIL**