

PERCY®

DECK MOUNT TUB FILLER WITH HAND SHOWER



- Cast brass spout and side valves
- Ceramic disc valve cartridges
- Distinct, geometric handle design
- Flexible hose connections for 8"– 12" installations
- Hand shower features 5 ft (1.5 m) metal hose
- Hand shower maximum flow rate: 2.5 gpm (9.5 L/min.)

CODES AND STANDARDS

Meets or Exceeds ASME A112.18.1/CSA B125.1

AVAILABLE FINISHES

Polished Chrome
Brushed Nickel

FINISH CODE

100
144

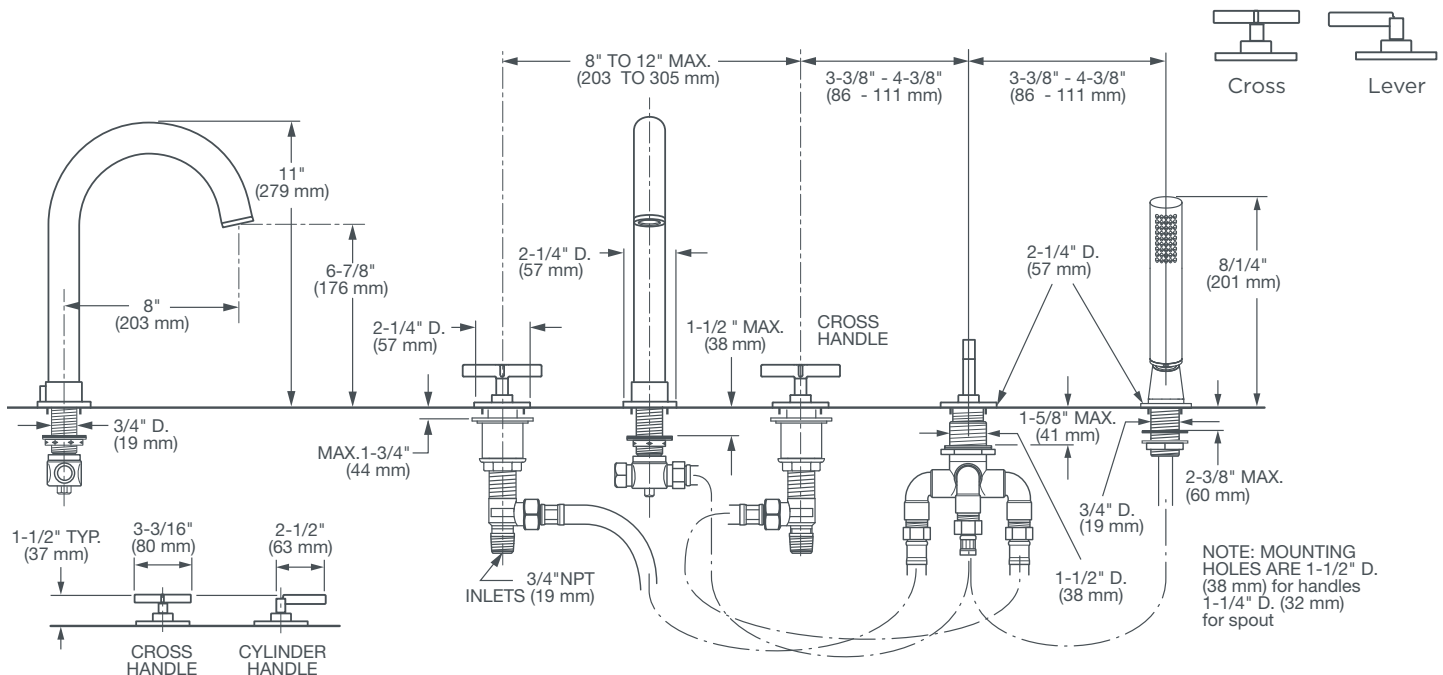
DESCRIPTION

Deck Mount Tub Filler with Hand Shower

- Cross Handles
- Lever Handles (ADA only)

PRODUCT NUMBER

D35105940.XXX
D35105900.XXX



IMPORTANT: These measurements are subject to change or cancellation. No responsibility is assumed for use of superseded or voided pages.

PART OF **LIXIL**

©2017 AS America Inc.

Revised 10/17



Meets the Americans with Disabilities Act Guidelines and ANSI A17.1 Requirements for the physically challenged.

www.dxv.com