



AMERICAN STANDARD

CONTEMPORARY COLD TAP

KITCHEN FAUCET



- Compatible with most filtration systems
- Single lever control
- Cold water only
- ADA qualified
- Lead Free - faucet contains $\leq 0.25\%$ total lead content by weighted volume
- Maximum flow rate: 1.5 gpm (5.7 L/min)

CODES AND STANDARDS

Meets or Exceeds ASME A112.18.1/
CSA B125.1/NSF 61/Section 9

Certified Compliant with 0.25% Weighted
Average Lead Content Regulations

AVAILABLE FINISHES

Polished Chrome
Ultra Steel

FINISH CODE

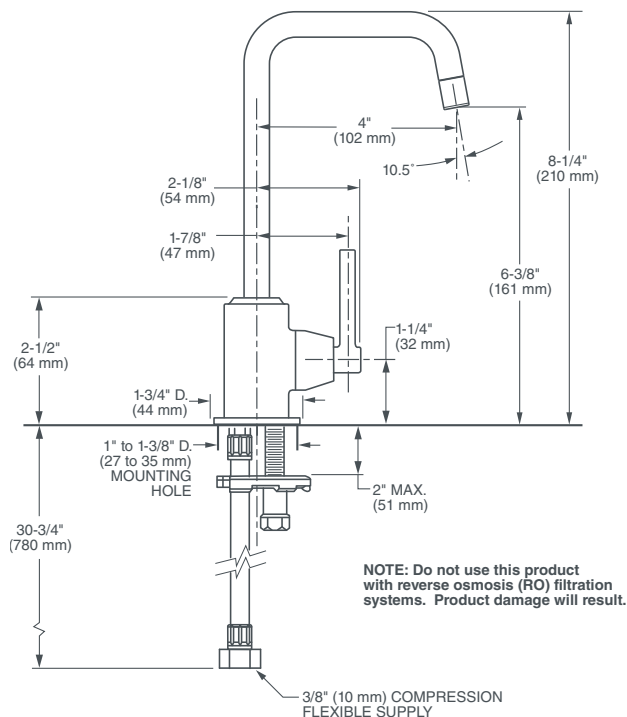
100
355

DESCRIPTION

Contemporary Cold Tap
Kitchen Faucet

PRODUCT NUMBER

D35401700.XXX



IMPORTANT: These measurements are subject to change or cancellation.
No responsibility is assumed for use of superseded or voided pages.

PART OF **LIXIL**

©2016 AS America Inc.

Revised 3/16



Meets the Americans with Disabilities Act
Guidelines and ANSI A117.1 Requirements
for the physically challenged.

www.d xv.com