

PROJECT: _____	UNIT TAG: _____	QUANTITY: _____
REPRESENTATIVE: _____	TYPE OF SERVICE: _____	DATE: _____
ENGINEER: _____	SUBMITTED BY: _____	DATE: _____
CONTRACTOR: _____	APPROVED BY: _____	DATE: _____
	ORDER NO.: _____	DATE: _____

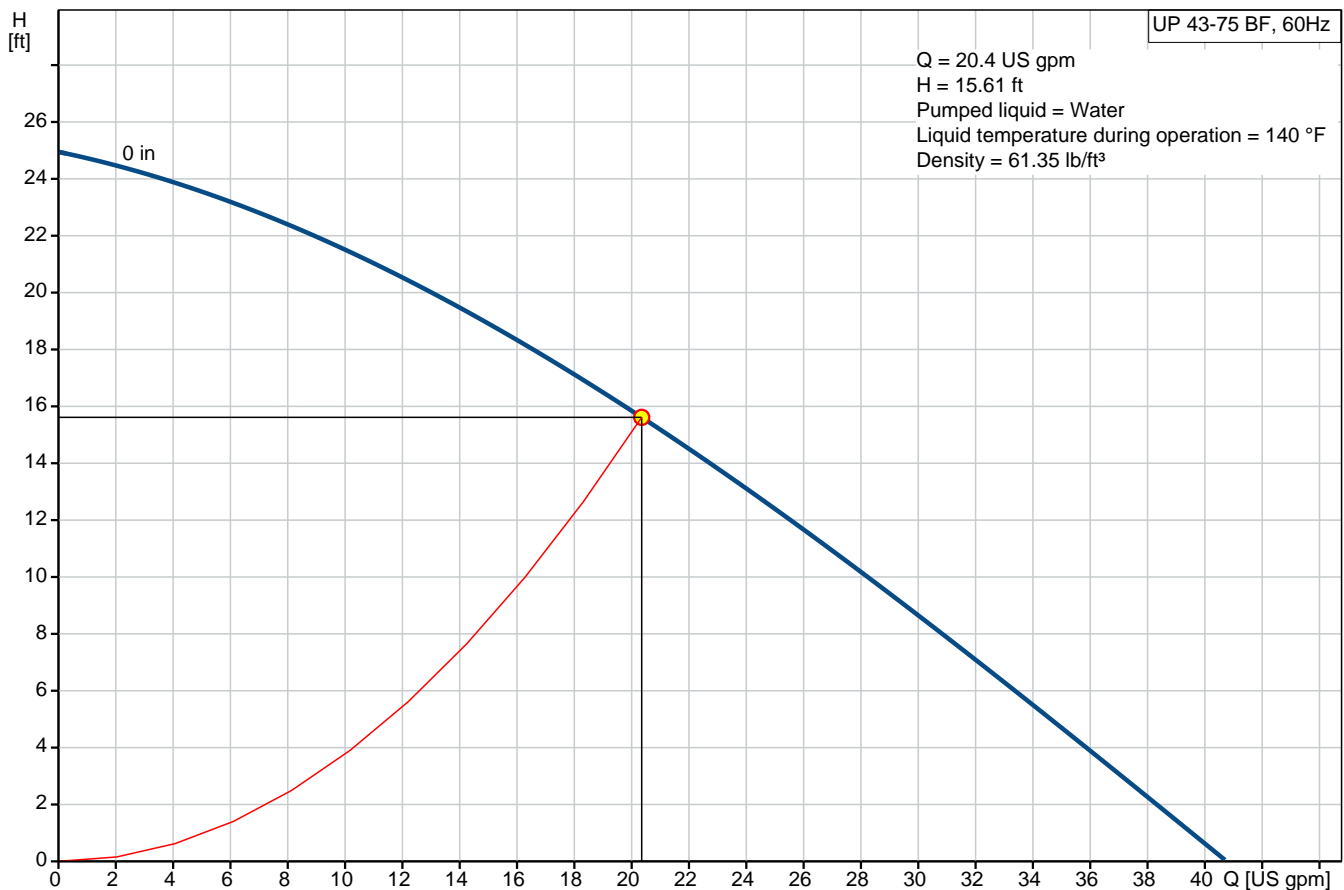


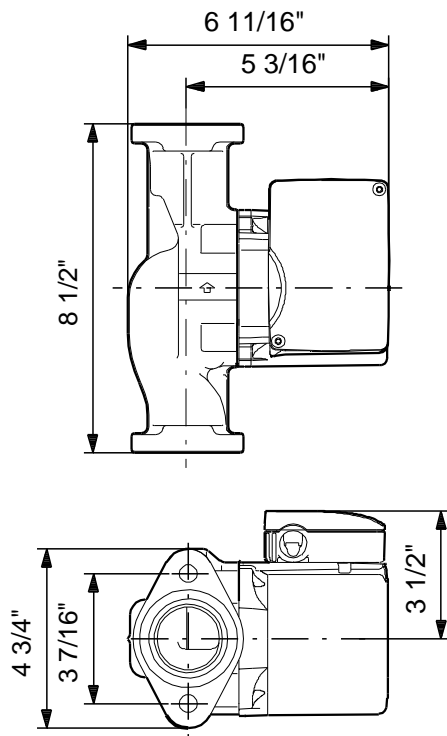
### UP 43-75 BF

Circulator pumps

Product photo could vary from the actual product

Conditions of Service		Pump Data		Motor Data	
Flow:	20.4 US gpm	Maximum operating pressure:	145 psi	Max. power input:	215 W
Head:	15.61 ft	Liquid temperature range:	32 .. 230 °F	Rated power - P2:	0.16 HP
Efficiency:	_____	Maximum ambient temperature:	104 °F	Rated voltage:	115 V
Liquid:	Water	Approvals:	UL, CSA	Main frequency:	60 Hz
Temperature:	140 °F	Type of connection:	Bronze Flange	Insulation class:	F
NPSH required:	ft	Flange standard:	USA Oval	Motor protection:	CONTACT
Viscosity:	_____	Pipe connection:	2 - Bolt Flange	Thermal protection:	internal
Specific Gravity:	0.985	Product number:	52722370		





**Materials:**

Pump housing: Bronze  
DIN W.-Nr. 2.1176.01

Impeller: Composite, PES

## Tender Text



Product photo could vary from the actual product

Product No.: [52722370](#)

### UP 43-75 BF

The pump is of the canned rotor type, i.e. pump and motor form an integral unit without shaft seal and with only two gaskets for sealing.

The bearings are lubricated by the pumped liquid.

The pump is characterized by:

- \* Ceramic shaft and radial bearings.
- \* Carbon axial bearing.
- \* Stainless steel rotor can and bearing plate.
- \* Corrosion-resistant impeller, Composite, PES.
- \* Bronze pump housing.

The motor is a 1-phase motor.

No additional motor protection is required.

### Liquid:

Pumped liquid: Water  
Liquid temperature range: 32 .. 230 °F  
Liquid temperature during operation: 140 °F  
Density: 61.35 lb/ft<sup>3</sup>

### Technical:

Actual calculated flow: 20.4 US gpm  
Resulting head of the pump: 15.61 ft  
Approvals on nameplate: UL, CSA

### Materials:

Pump housing: Bronze  
DIN W.-Nr. 2.1176.01  
Impeller: Composite, PES

### Installation:

Maximum ambient temperature: 104 °F  
Ambient max at 176°F liquid: 176 °F  
Maximum operating pressure: 145 psi  
Flange standard: USA Oval  
Type of connection: Bronze Flange  
Pipe connection: 2 - Bolt Flange  
Pressure stage: 10  
Port-to-port length: 8 1/2 in

### Electrical data:

Max. power input: 215 W  
Rated power - P2: 0.16 HP  
Main frequency: 60 Hz



**Company name:**

**Created by:**

**Phone:**


**Date:**

2/21/2018

Rated voltage: 1 x 115 V  
Current in speed 3: 2.15 A  
Capacitor size - run: 10  $\mu$ F/180 V  
Number of poles: 2  
Insulation class (IEC 85): F

**Others:**

Gross weight: 15 lb

Position	Count	Description
	1	<p><b>UP 43-75 BF</b></p>  <p>Product photo could vary from the actual product</p> <p>Product No.: <a href="#">52722370</a></p> <p>The pump is of the canned rotor type, i.e. pump and motor form an integral unit without shaft seal and with only two gaskets for sealing. The bearings are lubricated by the pumped liquid. The pump is characterized by:</p> <ul style="list-style-type: none"> <li>* Ceramic shaft and radial bearings.</li> <li>* Carbon axial bearing.</li> <li>* Stainless steel rotor can and bearing plate.</li> <li>* Corrosion-resistant impeller, Composite, PES.</li> <li>* Bronze pump housing.</li> </ul> <p>The motor is a 1-phase motor. No additional motor protection is required.</p> <p><b>Liquid:</b></p> <p>Pumped liquid: Water</p> <p>Liquid temperature range: 32 .. 230 °F</p> <p>Liquid temperature during operation: 140 °F</p> <p>Density: 61.35 lb/ft<sup>3</sup></p> <p><b>Technical:</b></p> <p>Actual calculated flow: 20.4 US gpm</p> <p>Resulting head of the pump: 15.61 ft</p> <p>Approvals on nameplate: UL, CSA</p> <p><b>Materials:</b></p> <p>Pump housing: Bronze</p> <p>DIN W.-Nr. 2.1176.01</p> <p>Impeller: Composite, PES</p> <p><b>Installation:</b></p> <p>Maximum ambient temperature: 104 °F</p> <p>Ambient max at 176°F liquid: 176 °F</p> <p>Maximum operating pressure: 145 psi</p> <p>Flange standard: USA Oval</p> <p>Type of connection: Bronze Flange</p> <p>Pipe connection: 2 - Bolt Flange</p> <p>Pressure stage: 10</p> <p>Port-to-port length: 8 1/2 in</p> <p><b>Electrical data:</b></p> <p>Max. power input: 215 W</p> <p>Rated power - P2: 0.16 HP</p> <p>Main frequency: 60 Hz</p> <p>Rated voltage: 1 x 115 V</p> <p>Current in speed 3: 2.15 A</p>



Company name:

Created by:

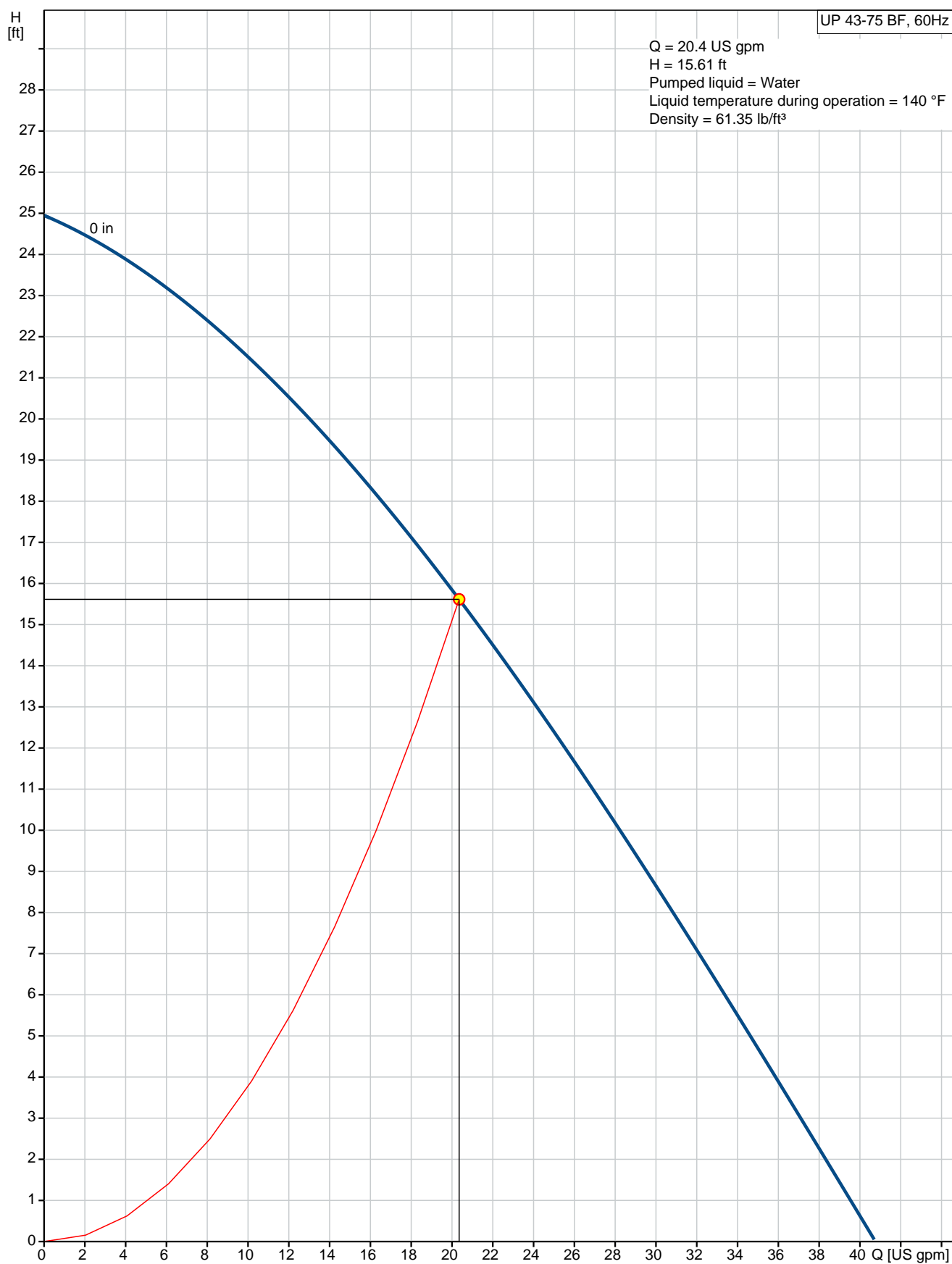
Phone:

Date:

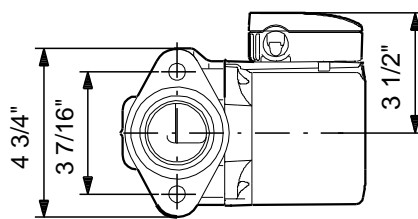
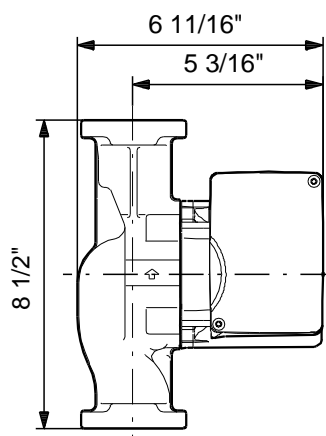
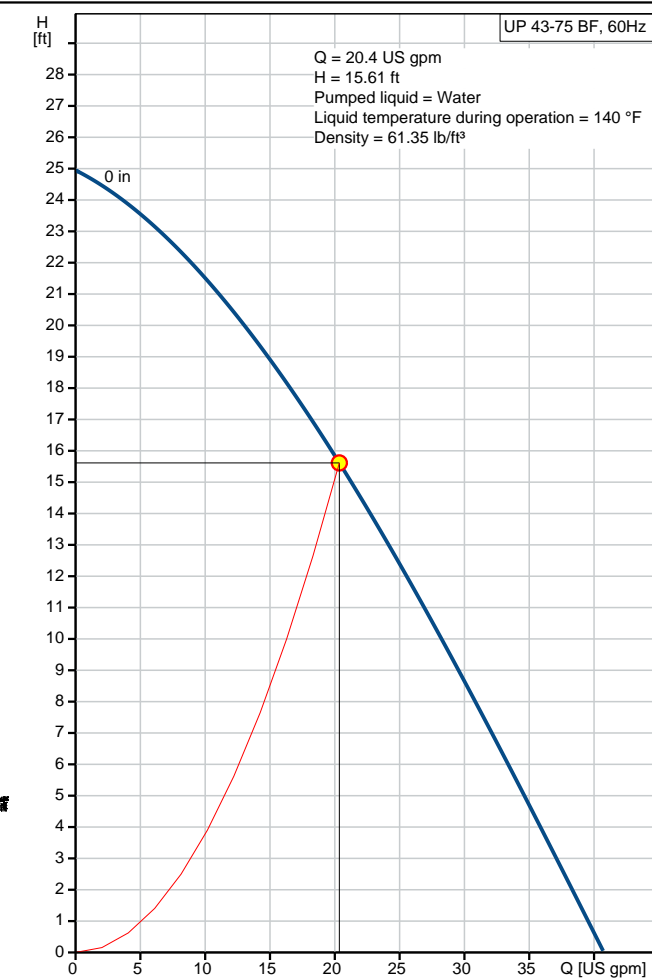
2/21/2018

Position	Count	Description
		Capacitor size - run: 10 $\mu$ F/180 V Number of poles: 2 Insulation class (IEC 85): F  <b>Others:</b> Gross weight: 15 lb

## 52722370 UP 43-75 BF 60 Hz

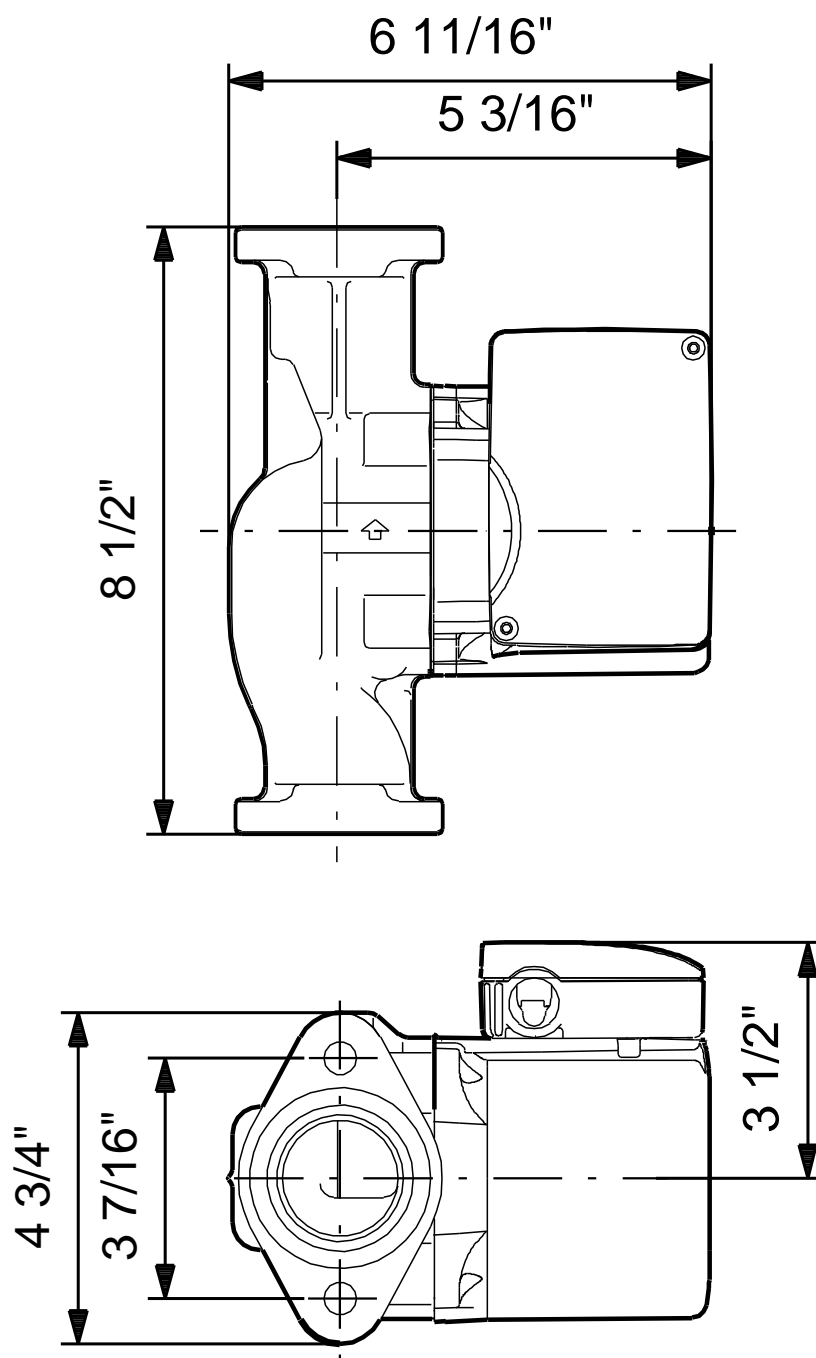


Description	Value
<b>General information:</b>	
Product name:	UP 43-75 BF
Product No.:	52722370
EAN:	5700391377389
<b>Technical:</b>	
Speed Number:	1
Actual calculated flow:	20.4 US gpm
Max flow:	40.9 US gpm
Resulting head of the pump:	15.61 ft
Head max:	24.94 ft
Approvals on nameplate:	UL, CSA
<b>Materials:</b>	
Pump housing:	Bronze
	DIN W.-Nr. 2.1176.01
Impeller:	Composite, PES
<b>Installation:</b>	
Maximum ambient temperature:	104 °F
Ambient max at 176°F liquid:	176 °F
Maximum operating pressure:	145 psi
Flange standard:	USA Oval
Type of connection:	Bronze Flange
Pipe connection:	2 - Bolt Flange
Pressure stage:	10
Port-to-port length:	8 1/2 in
<b>Liquid:</b>	
Pumped liquid:	Water
Liquid temperature range:	32 .. 230 °F
Liquid temperature during operation:	140 °F
Density:	61.35 lb/ft³
<b>Electrical data:</b>	
Max. power input:	215 W
Rated power - P2:	0.16 HP
Main frequency:	60 Hz
Rated voltage:	1 x 115 V
Current in speed 3:	2.15 A
Capacitor size - run:	10 µF/180 V
Number of poles:	2
Insulation class (IEC 85):	F
Motor protection:	CONTACT
Thermal protec:	internal
<b>Controls:</b>	
Pos term box:	9H
<b>Others:</b>	
Gross weight:	15 lb





## 52722370 UP 43-75 BF 60 Hz



Note! All units are in [mm] unless otherwise stated.  
Disclaimer: This simplified dimensional drawing does not show all details.



Company name:

Created by:

Phone:

Date:

2/21/2018

---

**Order Data:**

Product name: UP 43-75 BF

Amount: 1

Product No.: 52722370

Total: Price on request

---