

PROJECT: _____	UNIT TAG: _____	QUANTITY: _____
REPRESENTATIVE: _____	TYPE OF SERVICE: _____	DATE: _____
ENGINEER: _____	SUBMITTED BY: _____	DATE: _____
CONTRACTOR: _____	APPROVED BY: _____	DATE: _____
	ORDER NO.: _____	DATE: _____

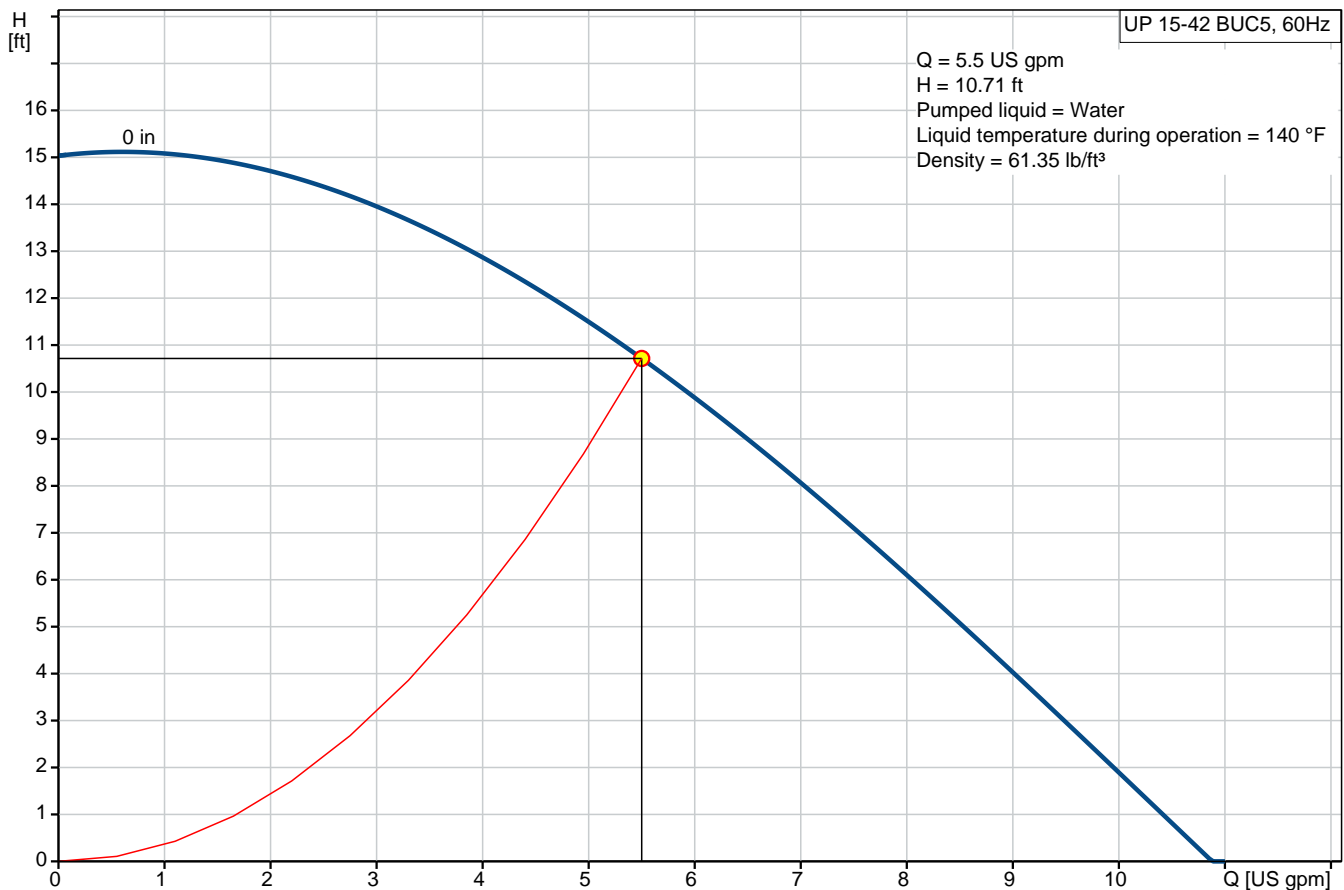


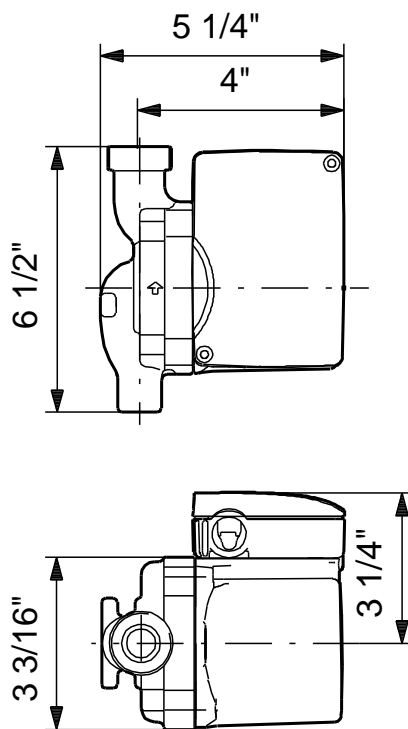
### UP 15-42 BUC5

Circulator pumps

Product photo could vary from the actual product

Conditions of Service	Pump Data	Motor Data
Flow: 5.5 US gpm	Maximum operating pressure: 145 psi	Max. power input: 85 W
Head: 10.71 ft	Liquid temperature range: 35.6 .. 204.8 °F	Rated power - P2: 0.04 HP
Efficiency: _____	Maximum ambient temperature: 104 °F	Rated voltage: 115 V
Liquid: Water	Approvals: UL, CSA	Main frequency: 60 Hz
Temperature: 140 °F	Type of connection: Bronze Sweat	Insulation class: F
NPSH required: ft	Flange standard: USA Sweat	Motor protection: CONTACT
Viscosity: _____	Pipe connection: 1/2" Sweat	Thermal protection: internal
Specific Gravity: 0.985	Product number: 59896150	



**Materials:**

Pump housing: Bronze  
DIN W.-Nr. 2.1176.01

Impeller: Composite, PES

## Tender Text



Product photo could vary from the actual product

Product No.: [59896150](#)

### UP 15-42 BUC5

The pump is of the canned rotor type, i.e. pump and motor form an integral unit without shaft seal and with only two gaskets for sealing.

The bearings are lubricated by the pumped liquid.

The pump is characterized by:

- \* Ceramic shaft and radial bearings.
- \* Carbon axial bearing.
- \* Stainless steel rotor can and bearing plate.
- \* Corrosion-resistant impeller, Composite, PES.
- \* Bronze pump housing.

The motor is a 1-phase motor.

No additional motor protection is required.

### Liquid:

Pumped liquid: Water  
Liquid temperature range: 35.6 .. 204.8 °F  
Liquid temperature during operation: 140 °F  
Density: 61.35 lb/ft³

### Technical:

Actual calculated flow: 5.5 US gpm  
Resulting head of the pump: 10.71 ft  
Approvals on nameplate: UL, CSA

### Materials:

Pump housing: Bronze  
DIN W.-Nr. 2.1176.01  
Impeller: Composite, PES

### Installation:

Maximum ambient temperature: 104 °F  
Ambient max at 176°F liquid: 176 °F  
Maximum operating pressure: 145 psi  
Flange standard: USA Sweat  
Type of connection: Bronze Sweat  
Pipe connection: 1/2" Sweat  
Pressure stage: 10  
Port-to-port length: 6 1/2 in

### Electrical data:

Max. power input: 85 W  
Rated power - P2: 0.04 HP  
Main frequency: 60 Hz



**Company name:**

**Created by:**

**Phone:**


**Date:**

2/21/2018

Rated voltage: 1 x 115 V  
Current in speed 3: 0.74 A  
Capacitor size - run: 10  $\mu$ F/180 V  
Number of poles: 2  
Insulation class (IEC 85): F

**Others:**

Gross weight: 6.5 lb

Position	Count	Description
	1	<p><b>UP 15-42 BUC5</b></p>  <p>Product photo could vary from the actual product</p> <p>Product No.: <a href="#">59896150</a></p> <p>The pump is of the canned rotor type, i.e. pump and motor form an integral unit without shaft seal and with only two gaskets for sealing. The bearings are lubricated by the pumped liquid. The pump is characterized by:</p> <ul style="list-style-type: none"> <li>* Ceramic shaft and radial bearings.</li> <li>* Carbon axial bearing.</li> <li>* Stainless steel rotor can and bearing plate.</li> <li>* Corrosion-resistant impeller, Composite, PES.</li> <li>* Bronze pump housing.</li> </ul> <p>The motor is a 1-phase motor. No additional motor protection is required.</p> <p><b>Liquid:</b></p> <p>Pumped liquid: Water</p> <p>Liquid temperature range: 35.6 .. 204.8 °F</p> <p>Liquid temperature during operation: 140 °F</p> <p>Density: 61.35 lb/ft<sup>3</sup></p> <p><b>Technical:</b></p> <p>Actual calculated flow: 5.5 US gpm</p> <p>Resulting head of the pump: 10.71 ft</p> <p>Approvals on nameplate: UL, CSA</p> <p><b>Materials:</b></p> <p>Pump housing: Bronze</p> <p>DIN W.-Nr. 2.1176.01</p> <p>Impeller: Composite, PES</p> <p><b>Installation:</b></p> <p>Maximum ambient temperature: 104 °F</p> <p>Ambient max at 176°F liquid: 176 °F</p> <p>Maximum operating pressure: 145 psi</p> <p>Flange standard: USA Sweat</p> <p>Type of connection: Bronze Sweat</p> <p>Pipe connection: 1/2" Sweat</p> <p>Pressure stage: 10</p> <p>Port-to-port length: 6 1/2 in</p> <p><b>Electrical data:</b></p> <p>Max. power input: 85 W</p> <p>Rated power - P2: 0.04 HP</p> <p>Main frequency: 60 Hz</p> <p>Rated voltage: 1 x 115 V</p> <p>Current in speed 3: 0.74 A</p>



Company name:

Created by:

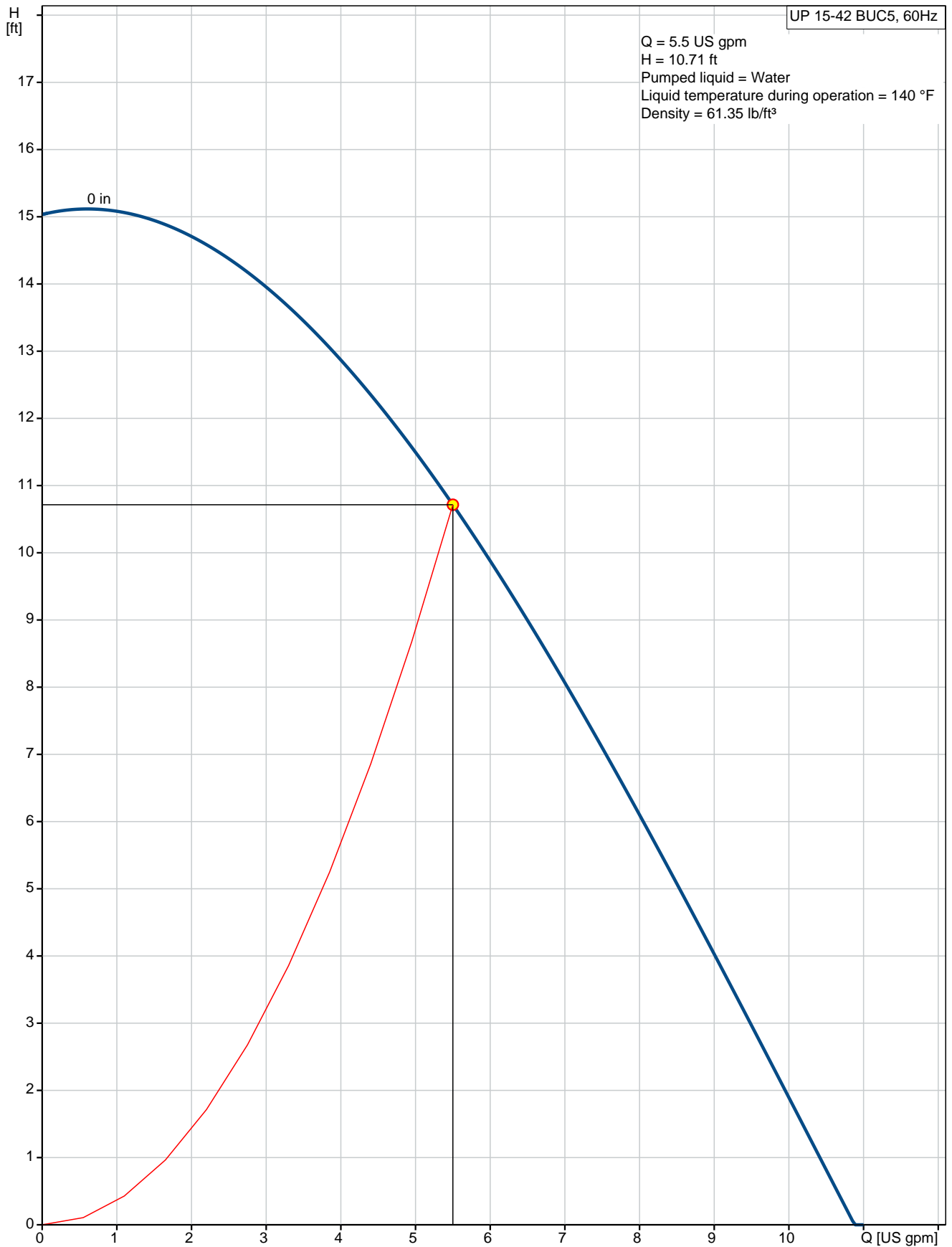
Phone:

Date:

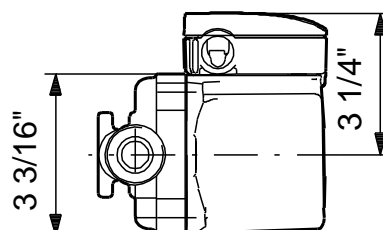
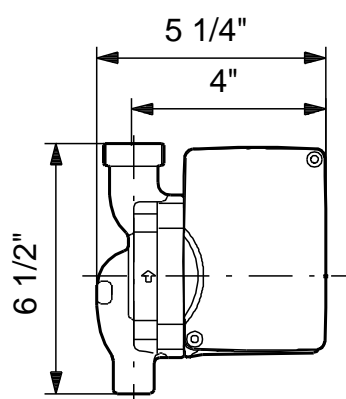
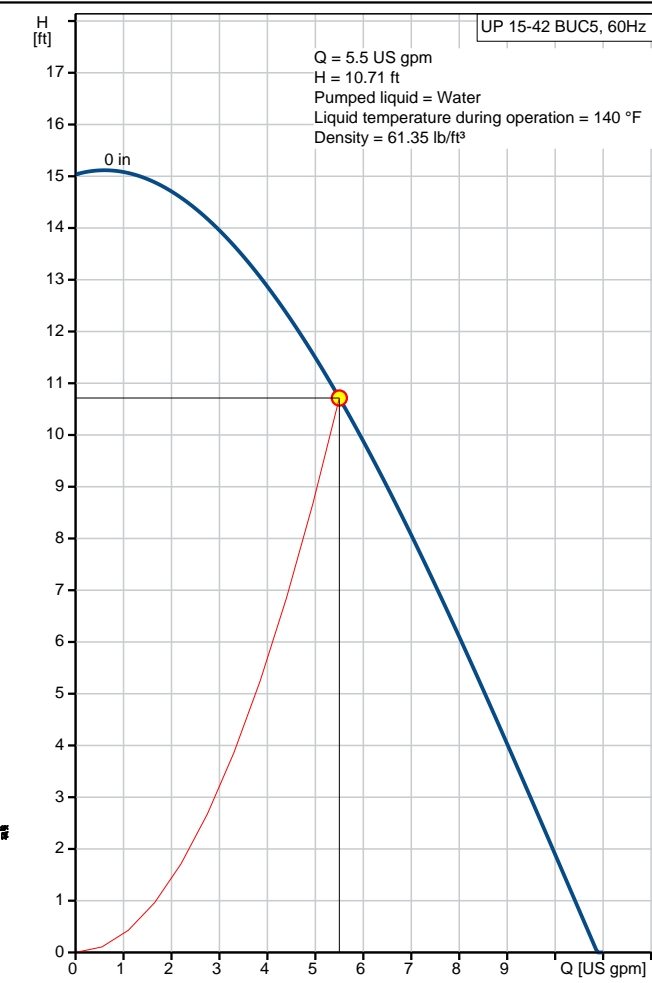
2/21/2018

Position	Count	Description
		Capacitor size - run: 10 $\mu$ F/180 V Number of poles: 2 Insulation class (IEC 85): F  <b>Others:</b> Gross weight: 6.5 lb

## 59896150 UP 15-42 BUC5 60 Hz

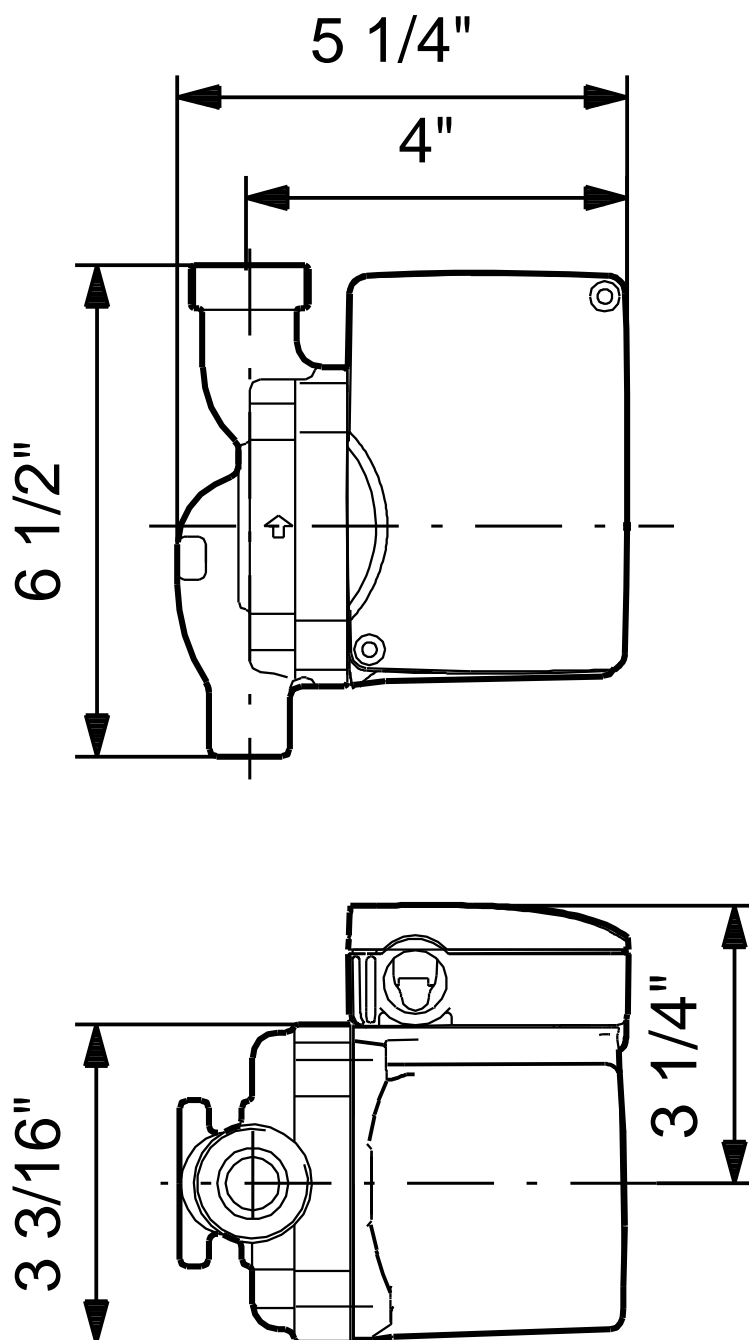


Description	Value
<b>General information:</b>	
Product name:	UP 15-42 BUC5
Product No.:	59896150
EAN:	5700391412660
<b>Technical:</b>	
Speed Number:	1
Actual calculated flow:	5.5 US gpm
Max flow:	17.2 US gpm
Resulting head of the pump:	10.71 ft
Head max:	15.09 ft
Approvals on nameplate:	UL, CSA
Valve:	pump with built-in isolating and non-return valves
<b>Materials:</b>	
Pump housing:	Bronze
	DIN W.-Nr. 2.1176.01
Impeller:	Composite, PES
<b>Installation:</b>	
Maximum ambient temperature:	104 °F
Ambient max at 176°F liquid:	176 °F
Maximum operating pressure:	145 psi
Flange standard:	USA Sweat
Type of connection:	Bronze Sweat
Pipe connection:	1/2" Sweat
Pressure stage:	10
Port-to-port length:	6 1/2 in
<b>Liquid:</b>	
Pumped liquid:	Water
Liquid temperature range:	35.6 .. 204.8 °F
Liquid temperature during operation:	140 °F
Density:	61.35 lb/ft³
<b>Electrical data:</b>	
Max. power input:	85 W
Rated power - P2:	0.04 HP
Main frequency:	60 Hz
Rated voltage:	1 x 115 V
Current in speed 3:	0.74 A
Capacitor size - run:	10 µF/180 V
Number of poles:	2
Insulation class (IEC 85):	F
Motor protection:	CONTACT
Thermal protec:	internal
<b>Controls:</b>	
Pos term box:	9H
<b>Others:</b>	
Gross weight:	6.5 lb





## 59896150 UP 15-42 BUC5 60 Hz



Note! All units are in [mm] unless otherwise stated.  
Disclaimer: This simplified dimensional drawing does not show all details.



Company name:

Created by:

Phone:

Date:

2/21/2018

---

**Order Data:**

Product name: UP 15-42 BUC5

Amount: 1

Product No.: 59896150

Total: Price on request

---