

PROJECT: _____	UNIT TAG: _____	QUANTITY: _____
REPRESENTATIVE: _____	TYPE OF SERVICE: _____	DATE: _____
ENGINEER: _____	SUBMITTED BY: _____	DATE: _____
CONTRACTOR: _____	APPROVED BY: _____	DATE: _____
	ORDER NO.: _____	DATE: _____

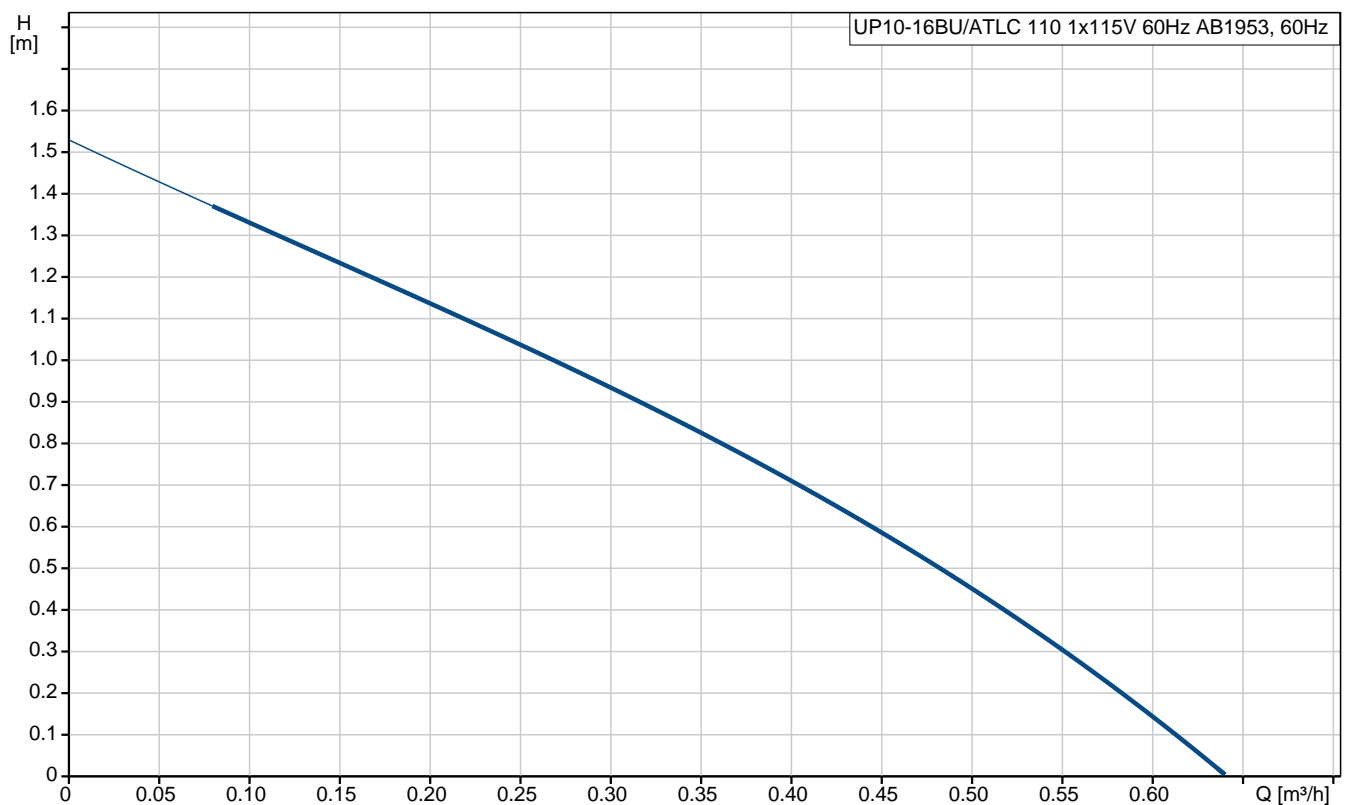
UP10-16BU/ATLC 110 1x115V 60Hz AB1953

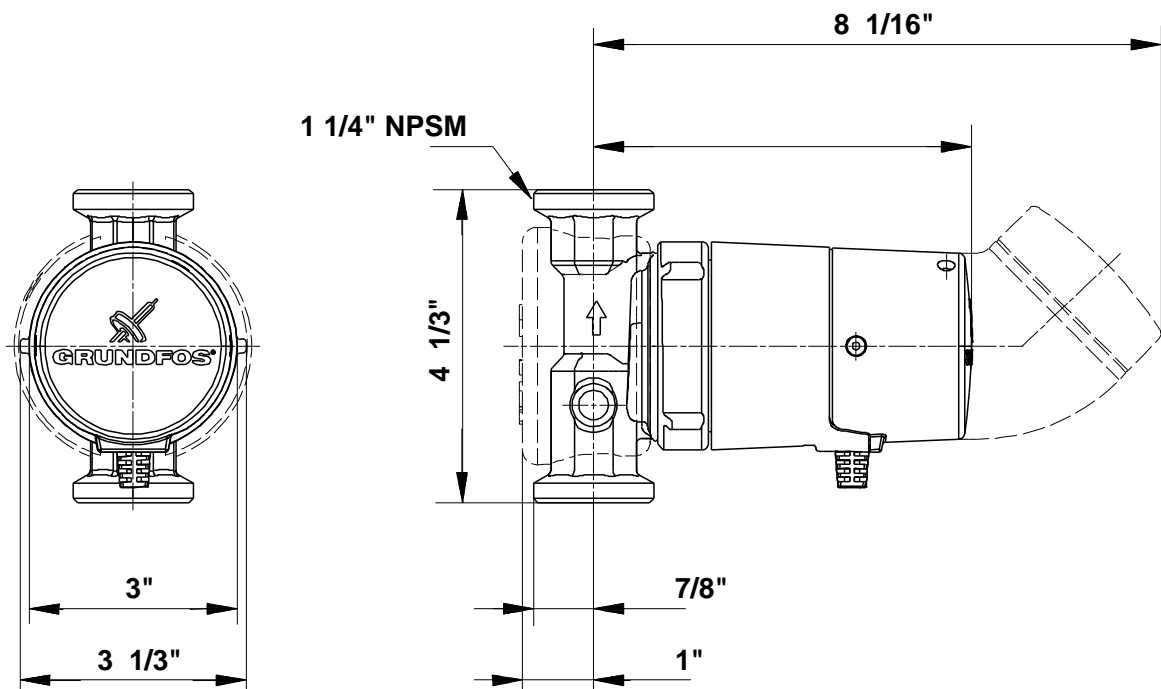
Domestic hot water pumps



Note! Product picture may differ from actual product

Conditions of Service	Pump Data	Motor Data
Flow: _____	Maximum operating pressure: 10 bar	Max. power input: 25 W
Head: _____	Liquid temperature range: 2 .. 95 °C	Rated voltage: 115 V
Efficiency: _____	Approvals: UL, CSA	Mains frequency: 60 Hz
Liquid: Water	Flange standard: USA Union	Enclosure class: IP42
Temperature: 60 °C	Pipe connection: 1 1/4" NPSM	Insulation class: F
NPSH required: m	Product number: On request	Motor protection: NONE
Viscosity: _____		Thermal protection: IMP.
Specific Gravity: 0.985		





Materials:

Pump housing: Brass MS 68
 Impeller: Stainless steel, EPDM, PPO, PTFE, Graphit

Tender Text



Note! Product picture may differ from actual product

Product No.: On request

UP10-16BU/ATLC 110 1x115V 60Hz AB1953

The pump is equipped with a spherical motor.

In contradistinction to the conventional canned-rotor motors, the spherical motor does not have a rotating bearing shaft. The stator transfers the magnetic field to the rotor in the water-conducting part of the pump. The pump is only suitable for pressurised hot water systems.

The water-conducting part of the pump is hermetically separated from the stator with a stainless steel spherical separator.

The built-in timer enables the pump to start and stop automatically at set intervals of minimum 20 minutes.

The built-in thermostat can be set to stop the pump at a preset liquid temperature.

The pump is characterized by:

- * Self-adjusting, gimbal-mounted rotor bearing lubricated by the pumped liquid.
- * High-quality bearing material.
- * The motor can be separated from the pump housing, enabling easy maintenance and replacement.
- * Corrosion-resistant impeller, Stainless steel, EPDM, PPO, PTFE, Graphit.
- * Brass pump housing.

The motor is a single-phase motor. It does not require external motor protection.

Liquid:

Pumped liquid: Water
Liquid temperature range: 2 .. 95 °C
Liquid temperature during operation: 60 °C
Density: 983.2 kg/m³

Technical:

TF class: 95
Approvals on nameplate: UL, CSA

Materials:

Pump housing: Brass MS 68
Impeller: Stainless steel, EPDM, PPO, PTFE, Graphit

Installation:


Maximum operating pressure: 10 bar
Flange standard: USA Union
Pipe connection: 1 1/4" NPSM
Pressure rating: 10
Port-to-port length: 110 mm

Electrical data:

Max. power input: 25 W
Mains frequency: 60 Hz
Rated voltage: 1 x 115 V
Current in speed 3: 0.23 A
Capacitor size - run: 2.2 µF
Enclosure class (IEC 34-5): IP42
Insulation class (IEC 85): F
Cable type: Connecting cord with plug
Type of cable plug: NEMA 5-15P

Others:

Net weight: 1.53 kg
Gross weight: 1.73 kg
Shipping volume: 0.004 m³

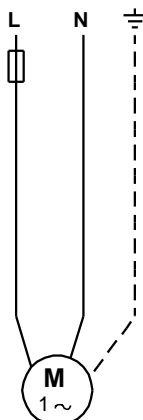
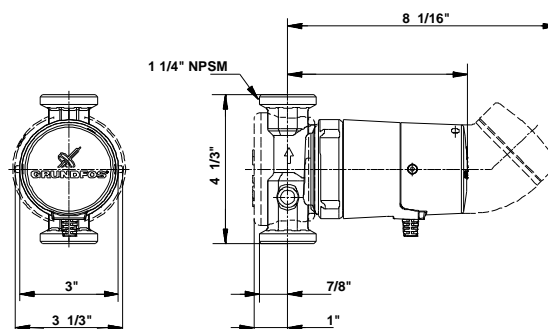
Position	Qty.	Description
	1	<p>UP10-16BU/ATLC 110 1x115V 60Hz AB1953</p>  <p>Note! Product picture may differ from actual product</p> <p>Product No.: On request</p> <p>The pump is equipped with a spherical motor. In contradistinction to the conventional canned-rotor motors, the spherical motor does not have a rotating bearing shaft. The stator transfers the magnetic field to the rotor in the water-conducting part of the pump. The pump is only suitable for pressurised hot water systems.</p> <p>The water-conducting part of the pump is hermetically separated from the stator with a stainless steel spherical separator.</p> <p>The built-in timer enables the pump to start and stop automatically at set intervals of minimum 20 minutes.</p> <p>The built-in thermostat can be set to stop the pump at a preset liquid temperature.</p> <p>The pump is characterized by:</p> <ul style="list-style-type: none"> * Self-adjusting, gimbal-mounted rotor bearing lubricated by the pumped liquid. * High-quality bearing material. * The motor can be separated from the pump housing, enabling easy maintenance and replacement. * Corrosion-resistant impeller, Stainless steel, EPDM, PPO, PTFE, Graphit. * Brass pump housing. <p>The motor is a single-phase motor. It does not require external motor protection.</p> <p>Liquid:</p> <p>Pumped liquid: Water</p> <p>Liquid temperature range: 2 .. 95 °C</p> <p>Liquid temperature during operation: 60 °C</p> <p>Density: 983.2 kg/m³</p> <p>Technical:</p> <p>TF class: 95</p> <p>Approvals on nameplate: UL, CSA</p> <p>Materials:</p> <p>Pump housing: Brass MS 68</p>

Position	Qty.	Description
		<p>Impeller: Stainless steel, EPDM, PPO, PTFE, Graphit</p> <p>Installation:</p> <p>Maximum operating pressure: 10 bar</p> <p>Flange standard: USA Union</p> <p>Pipe connection: 1 1/4" NPSM</p> <p>Pressure rating: 10</p> <p>Port-to-port length: 110 mm</p> <p>Electrical data:</p> <p>Max. power input: 25 W</p> <p>Mains frequency: 60 Hz</p> <p>Rated voltage: 1 x 115 V</p> <p>Current in speed 3: 0.23 A</p> <p>Capacitor size - run: 2.2 µF</p> <p>Enclosure class (IEC 34-5): IP42</p> <p>Insulation class (IEC 85): F</p> <p>Cable type: Connecting cord with plug</p> <p>Type of cable plug: NEMA 5-15P</p> <p>Others:</p> <p>Net weight: 1.53 kg</p> <p>Gross weight: 1.73 kg</p> <p>Shipping volume: 0.004 m³</p>

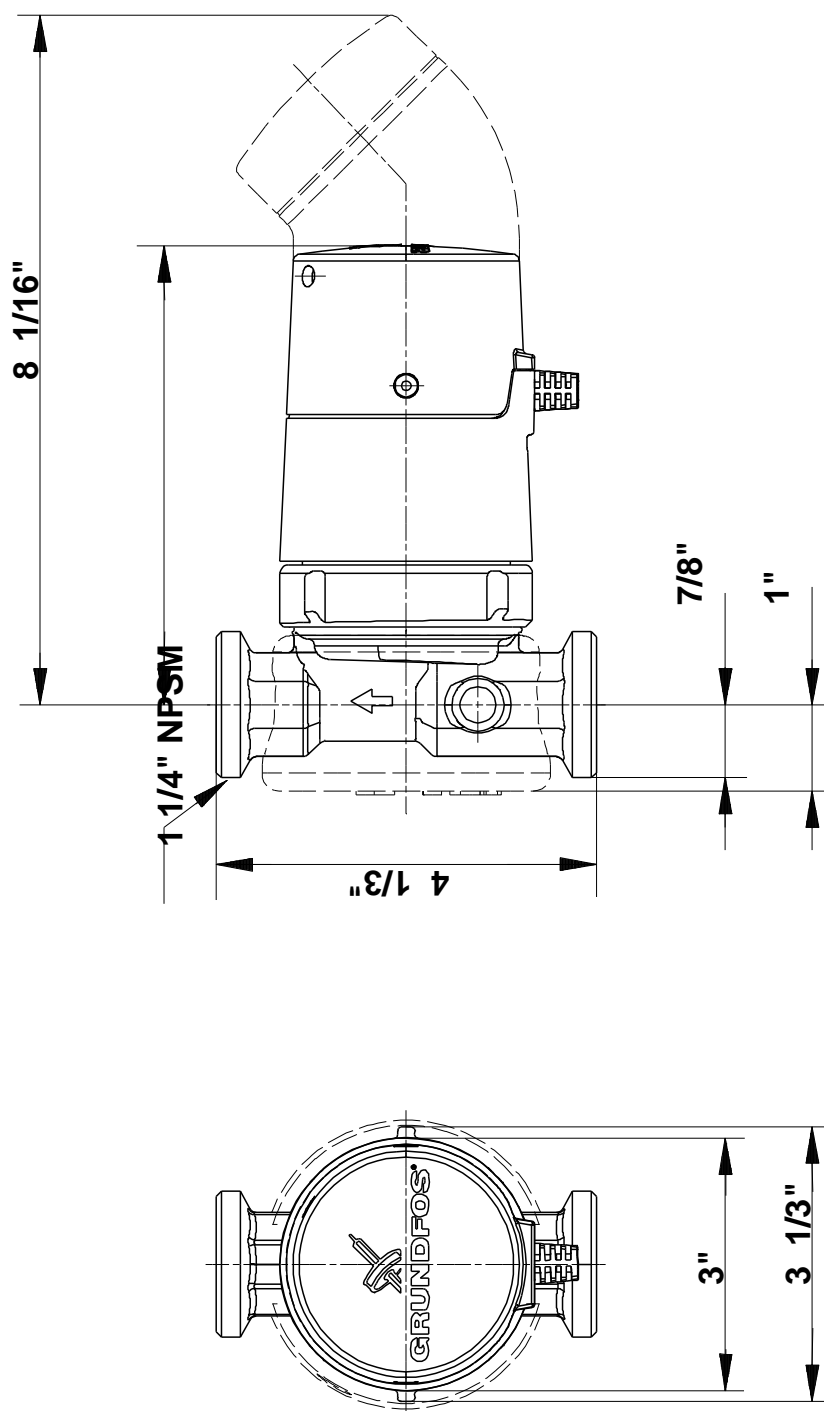
On request UP10-16BU/ATLC 110 1x115V 60Hz AB1953 60 Hz



Description	Value
General information:	
Product name:	UP10-16BU/ATLC 110 1x115V 60Hz AB1953
Product No:	On request
EAN number:	On request
Technical:	
Speed no:	1
Head max:	16 dm
TF class:	95
Approvals on nameplate:	UL, CSA
Valve:	Y
Materials:	
Pump housing:	Brass MS 68
Impeller:	Stainless steel, EPDM, PPO, PTFE, Graphit
Installation:	
Maximum operating pressure:	10 bar
Flange standard:	USA Union
Pipe connection:	1 1/4" NPSM
Pressure rating:	10
Port-to-port length:	110 mm
Liquid:	
Pumped liquid:	Water
Liquid temperature range:	2 .. 95 °C
Liquid temperature during operation:	60 °C
Density:	983.2 kg/m³
Electrical data:	
Max. power input:	25 W
Mains frequency:	60 Hz
Rated voltage:	1 x 115 V
Current in speed 3:	0.23 A
Capacitor size - run:	2.2 µF
Enclosure class (IEC 34-5):	IP42
Insulation class (IEC 85):	F
Motor protec:	NONE
Thermal protec:	IMP.
Cable type:	Connecting cord with plug
Type of cable plug:	NEMA 5-15P
Others:	
Net weight:	1.53 kg
Gross weight:	1.73 kg
Shipping volume:	0.004 m³

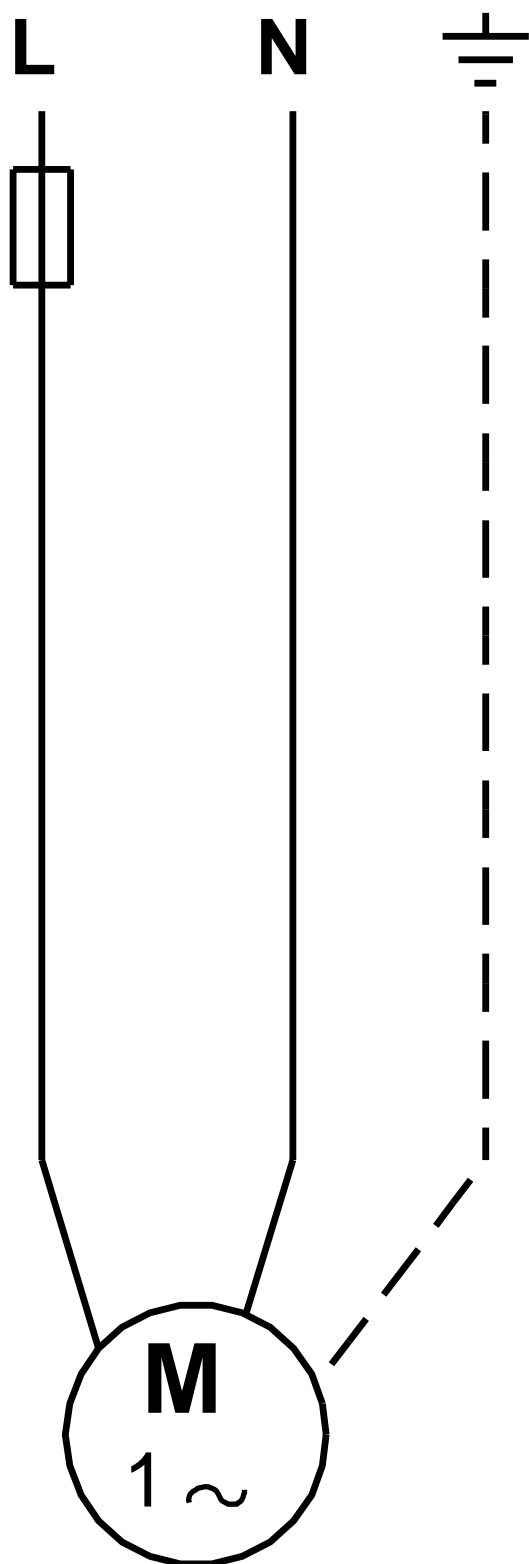


On request UP10-16BU/ATLC 110 1x115V 60Hz AB1953 60 Hz



Note! All units are in [mm] unless others are stated.
Disclaimer: This simplified dimensional drawing does not show all details.

On request UP10-16BU/ATLC 110 1x115V 60Hz AB1953 60 Hz



Note! All units are in [mm] unless others are stated.



Company name:

Created by:

Phone:

Date:

28/11/2017

Order Data:

Product name: UP10-16BU/ATLC 110 1x115V 60Hz AB1953

Amount: 1

Product No: On request

Total: Price on request
