

PROJECT:	_____	UNIT TAG:	_____	QUANTITY:	_____
REPRESENTATIVE:	_____	TYPE OF SERVICE:	_____	DATE:	_____
ENGINEER:	_____	SUBMITTED BY:	_____	DATE:	_____
CONTRACTOR:	_____	APPROVED BY:	_____	DATE:	_____
	_____	ORDER NO.:	_____	DATE:	_____

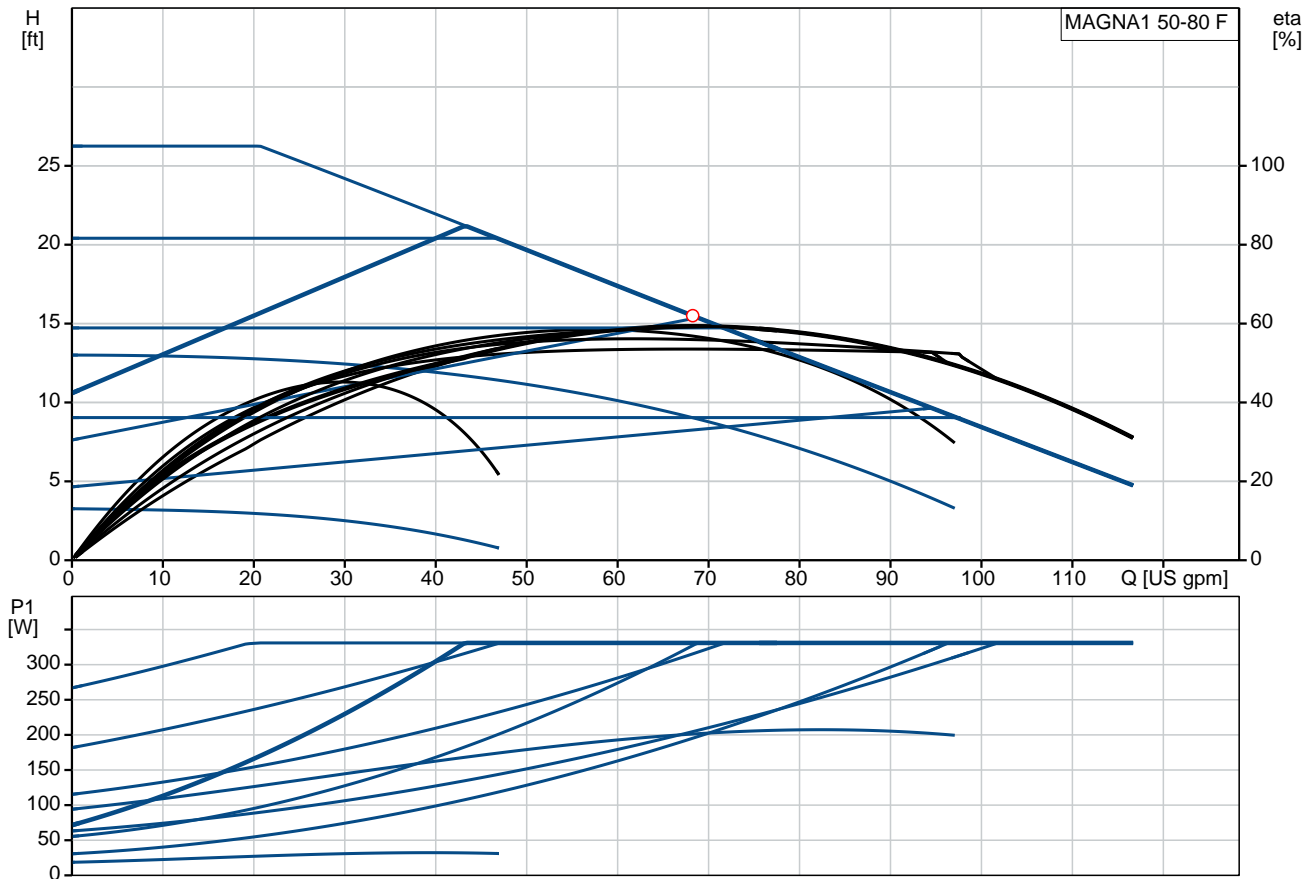


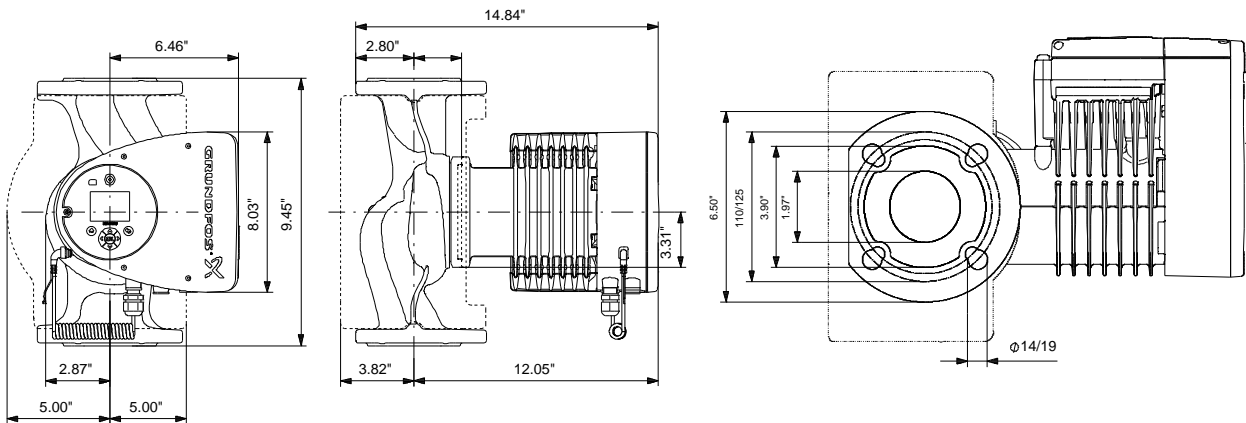
MAGNA1 50-80 F

Full range of intelligent, high-efficiency circulators for heating, cooling, ground source heat pump systems and domestic hot water applications

Product photo could vary from the actual product

Conditions of Service	Pump Data	Motor Data
Flow: _____	Maximum operating pressure: 174 psi	P1 max: 21 .. 336 W
Head: _____	Liquid temperature range: 14 .. 230 °F	Rated voltage: 115 V
Efficiency: _____	Maximum ambient temperature: 104 °F	Main frequency: 60 Hz
Liquid: Water	Approvals: 98544607	Enclosure class: X4D
Temperature: 140 °F	Flange standard: GF	Insulation class: F
NPSH required: ft	Pipe connection: GF53	
Viscosity: _____	Product number: 98126811	
Specific Gravity: 0.985		

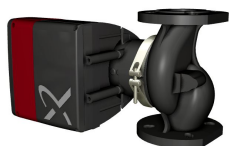




Materials:

Pump housing: Cast iron
 EN-GJL-250
 ASTM A48-250B
 Impeller: PES 30%GF

Tender Text

Product No.: [98126811](#)**MAGNA1 50-80 F**

MAGNA1 circulator pump with easy selection of pump setting

The pump is of the canned-rotor type, i.e. pump and motor form an integral unit without shaft seal and with only two gaskets for sealing.

The bearings are lubricated by the pumped liquid.

In order to avoid problems in connection with disposal, great importance has been attached to using as few different materials as possible.

A pump with no maintenance requirements and extremely low life cycle cost.

Heating systems

- Main pump
- mixing loops
- heating surfaces
- air-conditioning surfaces.

The MAGNA1 circulator pumps are designed for

circulating liquids in heating systems with variable flows where it is desirable to optimize the setting of the pump duty point, thus reducing energy costs. The pumps are also suitable for domestic hot-water systems.

To ensure correct operation, it is important that the sizing range of the system falls within the duty range of the pump.

The pump is also suitable for systems with

hot-water priority as an external signal can

immediately force the pump to operate according to the max. curve, for example in solar-heating systems.

Benefits

- Safe selection.
- Simple installation.
- Low energy consumption. All MAGNA1 pumps comply with the EuP requirements.
- Nine light fields for indication of pump setting. Three proportional-pressure curves, three constant-pressure curves and three fixed-speed curves are available.
- Low noise level.
- No maintenance and long life.

Liquid:

Pumped liquid: Water
Liquid temperature range: 14 .. 230 °F
Liquid temperature during operation: 140 °F
Density: 61.35 lb/ft³

Technical:

TF class: 110
Approvals on nameplate: 98544607

Materials:

Pump housing: Cast iron
EN-GJL-250
ASTM A48-250B
Impeller: PES 30%GF



Company name:

Created by:

Phone:

Date:

2/21/2018

Installation:

Range of ambient temperature: 32 .. 104 °F

Maximum operating pressure: 174 psi

Flange standard: GF

Pipe connection: GF53

Pressure stage: PN12

Port-to-port length: 9 1/2 in

Electrical data:

Power input - P1: 21 .. 336 W

Main frequency: 60 Hz

Rated voltage: 1 x 115 V

Maximum current consumption: 0.32 .. 2.97 A

Enclosure class (IEC 34-5): X4D

Insulation class (IEC 85): F


Others:

Energy (EEI): 0.19

Net weight: 39 lb

Gross weight: 43.6 lb

Shipping volume: 1630 ft³

Position	Count	Description
	1	<p>MAGNA1 50-80 F</p>  <p>Product No.: 98126811</p> <p>MAGNA1 circulator pump with easy selection of pump setting The pump is of the canned-rotor type, i.e. pump and motor form an integral unit without shaft seal and with only two gaskets for sealing. The bearings are lubricated by the pumped liquid. In order to avoid problems in connection with disposal, great importance has been attached to using as few different materials as possible. A pump with no maintenance requirements and extremely low life cycle cost.</p> <p>Heating systems</p> <ul style="list-style-type: none"> • Main pump • mixing loops • heating surfaces • air-conditioning surfaces. <p>The MAGNA1 circulator pumps are designed for circulating liquids in heating systems with variable flows where it is desirable to optimize the setting of the pump duty point, thus reducing energy costs. The pumps are also suitable for domestic hot-water systems.</p> <p>To ensure correct operation, it is important that the sizing range of the system falls within the duty range of the pump.</p> <p>The pump is also suitable for systems with hot-water priority as an external signal can immediately force the pump to operate according to the max. curve, for example in solar-heating systems.</p> <p>Benefits</p> <ul style="list-style-type: none"> • Safe selection. • Simple installation. • Low energy consumption. All MAGNA1 pumps comply with the EuP requirements. • Nine light fields for indication of pump setting. Three proportional-pressure curves, three constant-pressure curves and three fixed-speed curves are available. • Low noise level. • No maintenance and long life. <p>Liquid:</p> <p>Pumped liquid: Water</p> <p>Liquid temperature range: 14 .. 230 °F</p> <p>Liquid temperature during operation: 140 °F</p> <p>Density: 61.35 lb/ft³</p> <p>Technical:</p> <p>TF class: 110</p> <p>Approvals on nameplate: 98544607</p> <p>Materials:</p> <p>Pump housing: Cast iron EN-GJL-250 ASTM A48-250B</p>



Company name:

Created by:

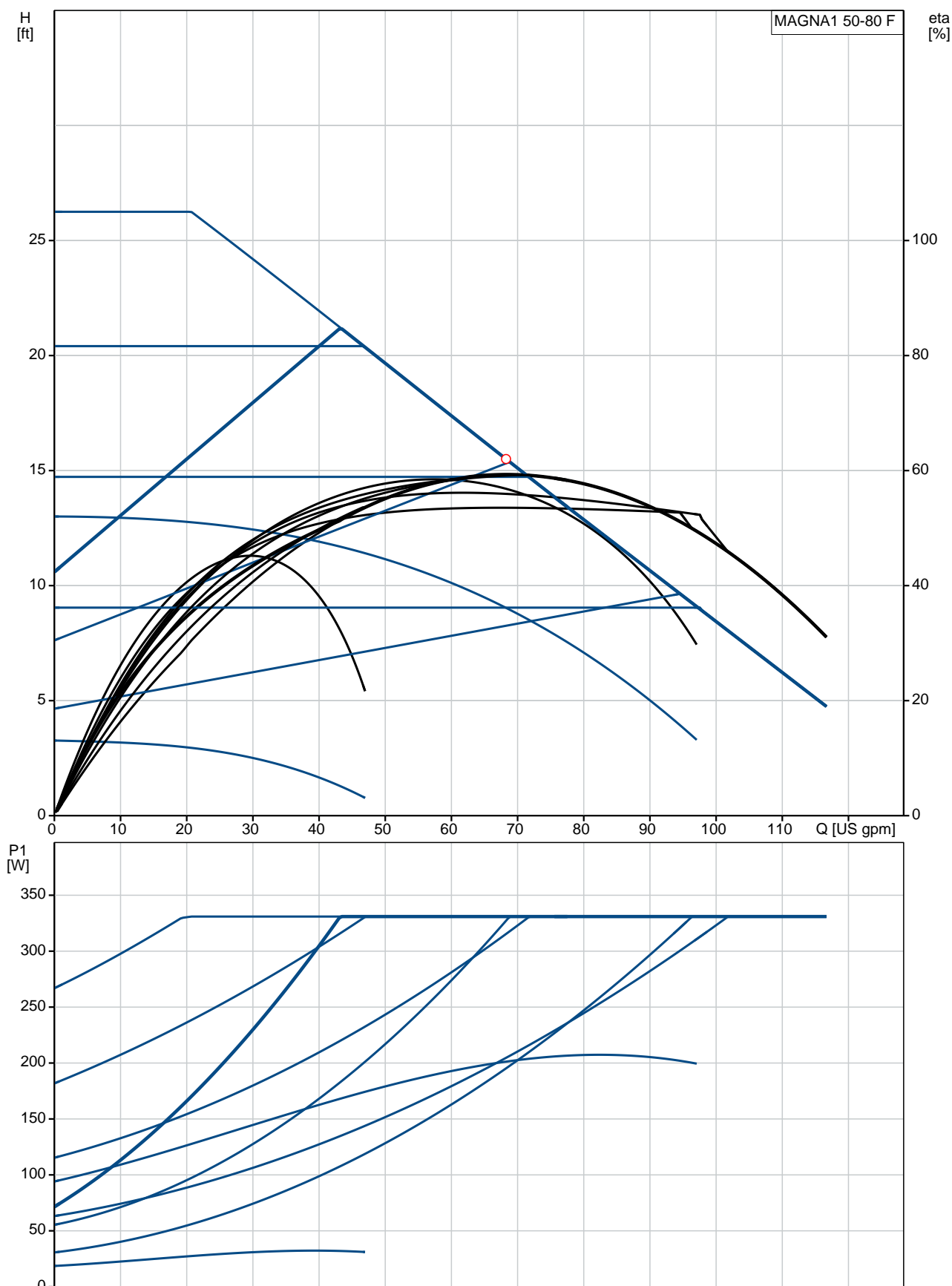
Phone:

Date:

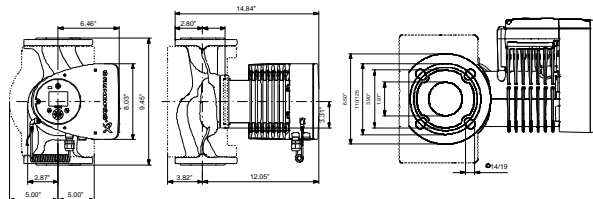
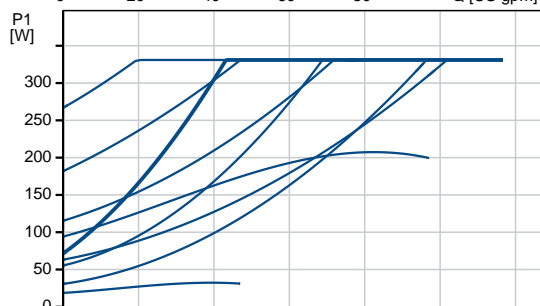
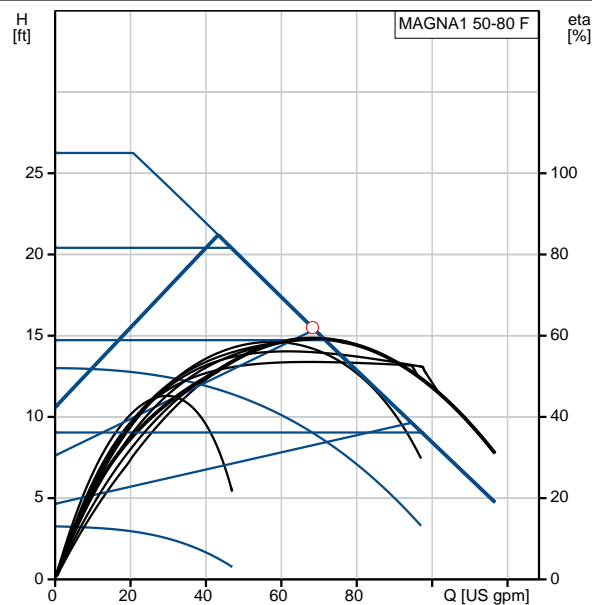
2/21/2018

Position	Count	Description
		Impeller: PES 30%GF
		Installation:
		Range of ambient temperature: 32 .. 104 °F
		Maximum operating pressure: 174 psi
		Flange standard: GF
		Pipe connection: GF53
		Pressure stage: PN12
		Port-to-port length: 9 1/2 in
		Electrical data:
		Power input - P1: 21 .. 336 W
		Main frequency: 60 Hz
		Rated voltage: 1 x 115 V
		Maximum current consumption: 0.32 .. 2.97 A
		Enclosure class (IEC 34-5): X4D
		Insulation class (IEC 85): F
		Others:
		Energy (EEI): 0.19
		Net weight: 39 lb
		Gross weight: 43.6 lb
		Shipping volume: 1630 ft ³

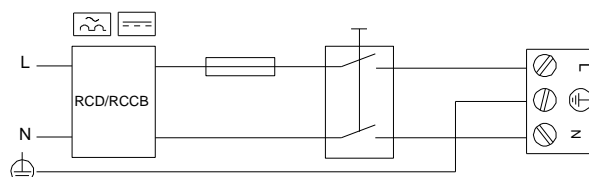
98126811 MAGNA1 50-80 F 60 Hz



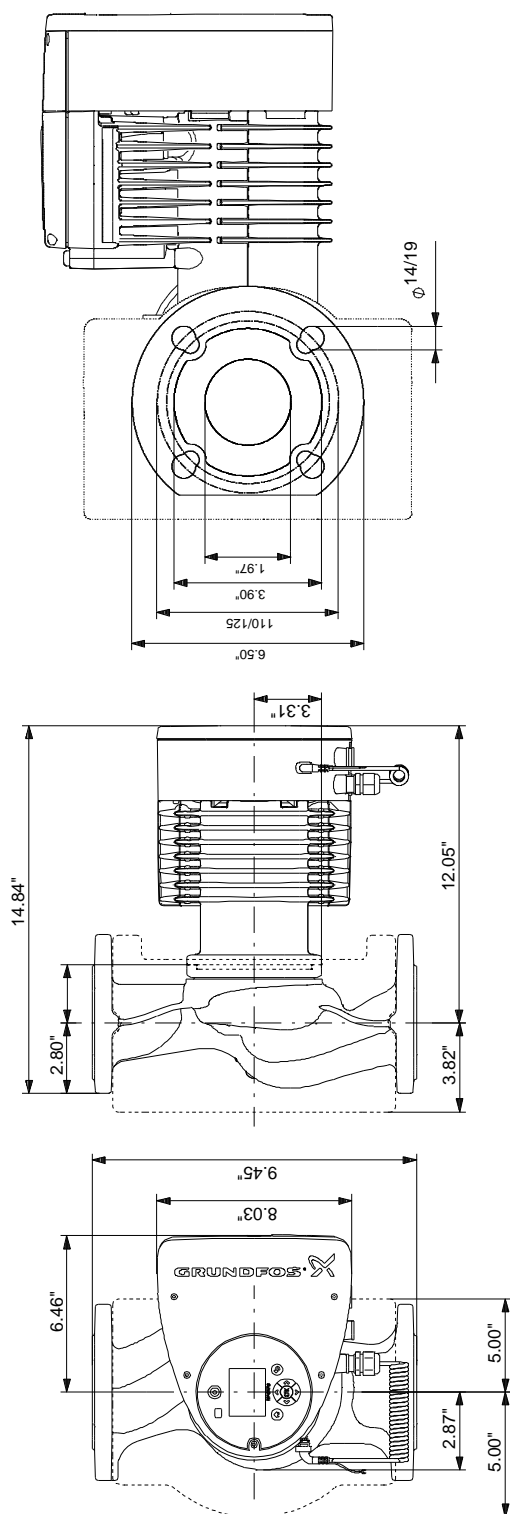
Description	Value
General information:	
Product name:	MAGNA1 50-80 F
Product No.:	98126811
EAN:	5710629499738
Technical:	
Head max:	26.25 ft
TF class:	110
Approvals on nameplate:	98544607
Model:	B
Materials:	
Pump housing:	Cast iron
	EN-GJL-250
	ASTM A48-250B
Impeller:	PES 30%GF
Installation:	
Range of ambient temperature:	32 .. 104 °F
Maximum operating pressure:	174 psi
Flange standard:	GF
Pipe connection:	GF53
Pressure stage:	PN12
Port-to-port length:	9 1/2 in
Liquid:	
Pumped liquid:	Water
Liquid temperature range:	14 .. 230 °F
Liquid temperature during operation:	140 °F
Density:	61.35 lb/ft³
Electrical data:	
Power input - P1:	21 .. 336 W
Main frequency:	60 Hz
Rated voltage:	1 x 115 V
Maximum current consumption:	0.32 .. 2.97 A
Enclosure class (IEC 34-5):	X4D
Insulation class (IEC 85):	F
Others:	
Energy (EEI):	0.19
Net weight:	39 lb
Gross weight:	43.6 lb
Shipping volume:	1630 ft³



Example of mains-connected motor with mains switch, backup fuse and additional protection



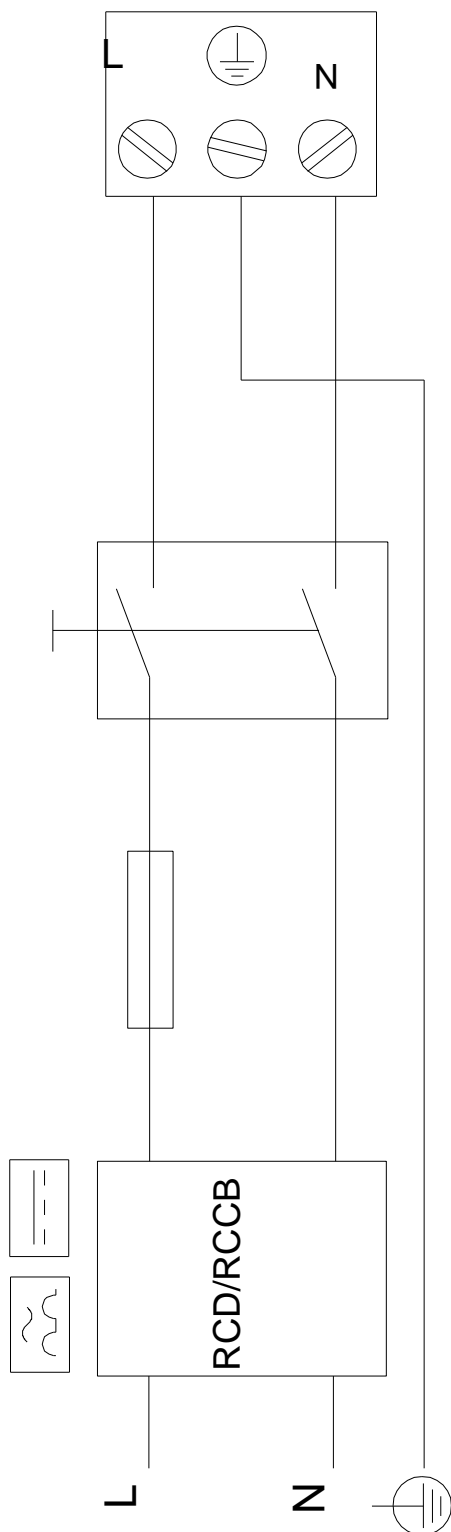
98126811 MAGNA1 50-80 F 60 Hz



Note! All units are in [mm] unless otherwise stated.
Disclaimer: This simplified dimensional drawing does not show all details.

98126811 MAGNA1 50-80 F 60 Hz

Example of mains-connected motor
with mains switch, backup fuse and additional protection



All units are [mm] unless otherwise presented.



Company name:

Created by:

Phone:

Date:

2/21/2018

Order Data:

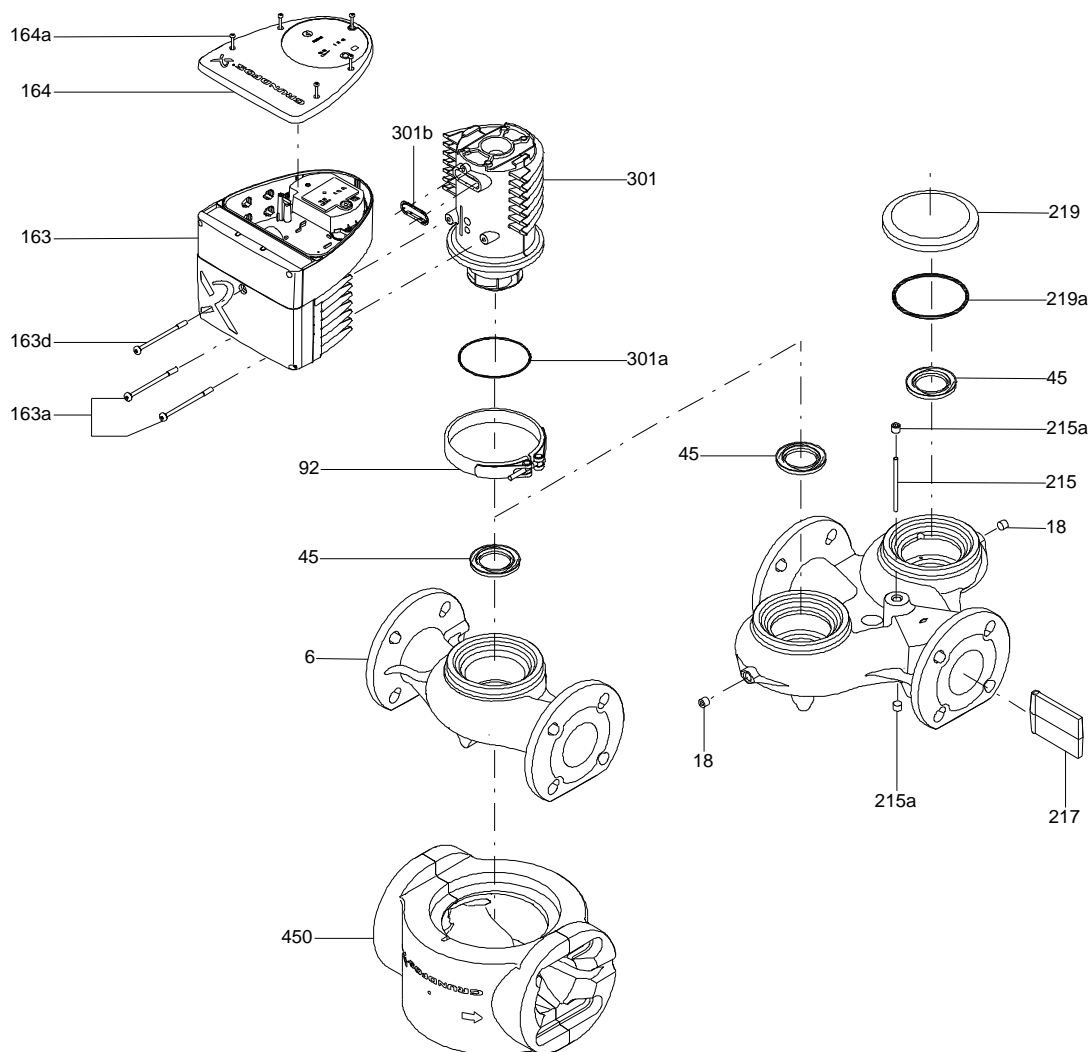
Product name: MAGNA1 50-80 F

Amount: 1

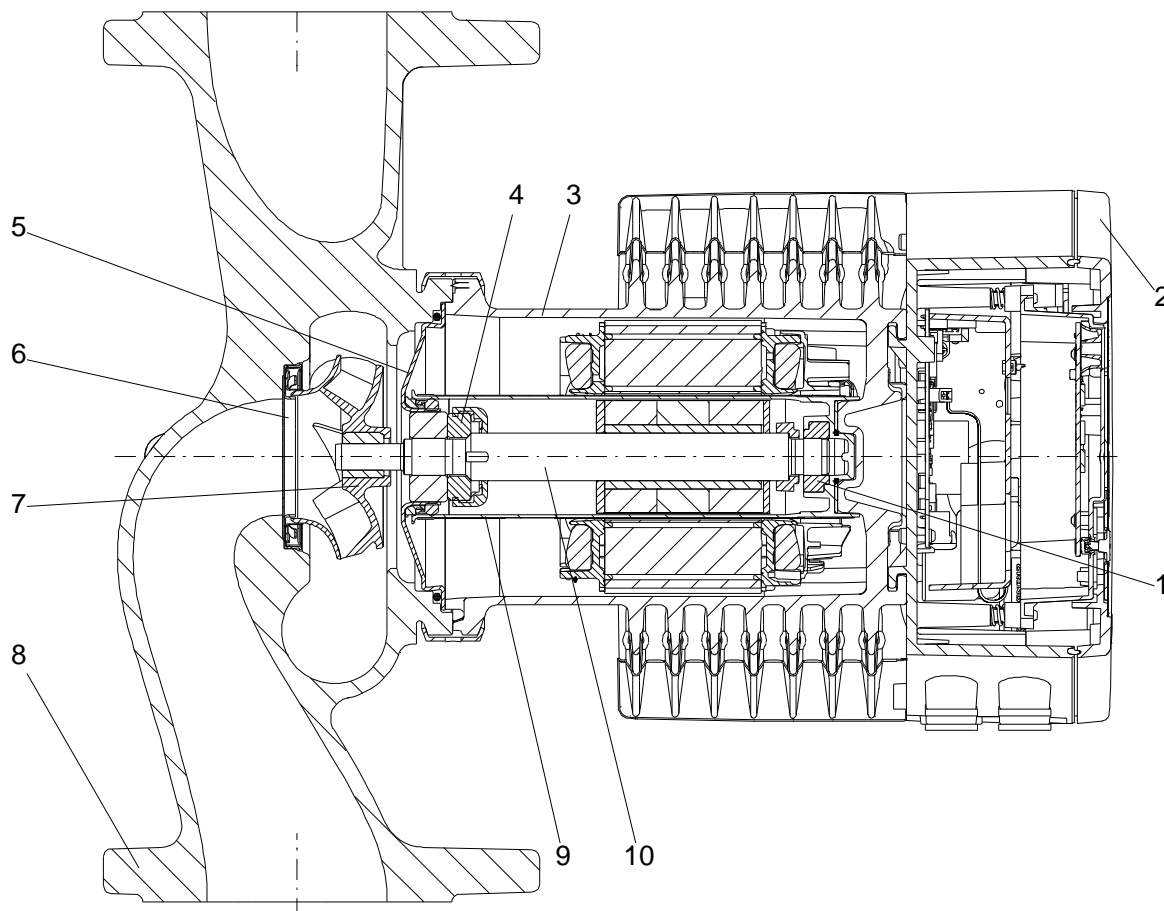
Product No.: 98126811

Total: Price on request

Exploded view (TM054005 for Magna1 750-1600W)



Sectional drawing (TM069997 Magna1 ME/LA model C)





Company name:

Created by:

Phone:

Date:

2/21/2018

Parts list MAGNA1 50-80 F, Prod number 98126811

Valid from 31.7.2017 (1731)

Position	Description	Annotation	Classification data	Part No.	Count	Unit
-	Pump housing cpl.				1	pcs
6	Pump housing				1	
45	Neck ring cpl.				1	
-	Control box				1	pcs
162	Control box				1	
163	Control box				1	
92	Clamp cpl.				1	pcs
163a	Pan head screw				2	pcs
163d	Pan head screw				1	pcs
301	Pump head cpl.				1	pcs
301b	Protector				1	pcs
450	Insulation				1	pcs