

# HydroFlame<sup>®</sup> Pro

Transforming Firestop  
Solutions



## Transforming Firestop Solutions

- **Telescoping Sleeves**  
Eliminate the need to cut sleeves on the jobsite
- **Locator Whiskers**  
Locate buried sleeves after concrete pour
- **Faster Install**  
Up to 6 times faster to install than makeshift methods
- **Easy To Stock**  
Available at a distributor near you
- **UL Listed Firestop Device**  
Meets and exceeds building code requirements



1 Lock outer sleeve in place



2 Nail to form deck



3 Remove cap with  
Safety Cap Tool

Patented & Patent Pending.



INTERNATIONAL FIRESTOP COUNCIL



BUY AMERICAN ACT



FBC™ System Compatible indicates that this products has been tested, and is monitored on an ongoing basis, to assure its chemical compatibility with FlowGuard Gold®, BlazeMaster® and Corzan® piping systems and products made with TempRite® Technology.

The FBC Compatible Logo, FBC™, FlowGuard Gold®, BlazeMaster®, Corzan®, and TempRite® are trademarks of Lubrizol Advanced Materials Inc. or its affiliates.









# Table of Contents

## Company

Revolutionizing Plumbing & Firestop Solutions .....	6
Converting Makeshift Methods into Engineered Solutions .....	7
A Valued Member of the RWC Family of Brands.....	8
Transforming Firestop Solutions Through Industry Collaboration .....	12

## Firestop Products

### HoldRite® HydroFlame™

#### Sealants, Wraps , Pipe Collars, Putty Pads

Why HoldRite® Sealants? .....	15
HoldRite® Sealants Product and Services Directory .....	18

### HoldRite® HydroFlame™

Why HoldRite® HydroFlame™ Pro Series Sleeves? .....	26
HydroFlame™ Pro Series Features and Benefits .....	27
Reduce Installation Costs with HydroFlame™ Pro Series .....	30
HydroFlame™ Pro Series Product and Services Directory .....	33

### HoldRite® HydroFlame™

#### Custom Built

Why HoldRite® HydroFlame™ Custom Built Sleeving Solutions? .....	48
HydroFlame™ Custom Built Product and Services Directory .....	51

## Specifications & VIP Services

Specifications.....	63
No Charge VIP Estimating Service .....	69
Website Tools . .....	70

## Appendix

Index .....	75
-------------	----

# Revolutionizing Plumbing & Firestop Solutions

HoldRite® has been “Converting Makeshift Methods into Engineered Solutions” since the introduction of the #101-18 copper bonded bracket in 1982. That year, the Hubbard family business was born when Master Plumber George Hubbard designed a pipe support solution to replace the time-consuming and labor-intensive method of cutting blocks of wood to support water piping. Ultimately, George’s invention would revolutionize plumbing throughout North America by creating the secondary pipe support plumbing methodology.

Understanding the plumber’s perspective has always been in HoldRite’s DNA. Even as we evolved into an international company, retaining a plumber’s perspective has remained our strategic competitive advantage. We know that our value comes from constantly providing innovative product solutions to the plumbing industry. Our commitment to visiting our customers and listening to their input means that we understand plumbing applications

better than anyone. This philosophy allows us to solve contractor problems, generate new revenue streams for distribution, and provide superior engineered building projects, without increasing construction costs.

Hundreds of millions of HoldRite products have been installed into a wide variety of construction projects, including single- and multi-family residential, healthcare, institutional, hotel, university, service and repair, tenant improvement and many more. By understanding both the large-project perspective and specific application requirements, HoldRite develops solutions that are essential in setting the standard for developers, architects, engineers, and contractors. HoldRite is a recognized brand leader and category expert in areas that include secondary pipe supports, acoustic noise and vibration isolation of plumbing systems, sleeving and firestopping systems, equipment support and water heater accessories, and drain, waste and vent (DWV) support and testing solutions.

Continuing in our tradition of providing versatile firestop solutions, HoldRite® introduces a full line of sealants, wraps and collars, designed to work easily alongside HydroFlame Pro in a variety of wall and flooring applications. Like our other products, HoldRite’s new sealants, wraps and collars were created to help reduce installation time and increase jobsite efficiency.

HoldRite also offers value-added, no-cost services to the plumbing contractor, engineer, architect, and wholesale distributor to assist with different stages of the project. These VIP services include specification and submittal assistance, 3-D product drawings, custom installation detail pages, installation animations, Building Information Modeling (BIM), specification authorship, installation training, engineering judgements, technical support and project “take-off” assistance.





# Converting Makeshift Methods Into Engineered Solutions

Ceiling/Floor Fire Stopping



Makeshift Method

HoldRite® HydroFlame™  
Sealants



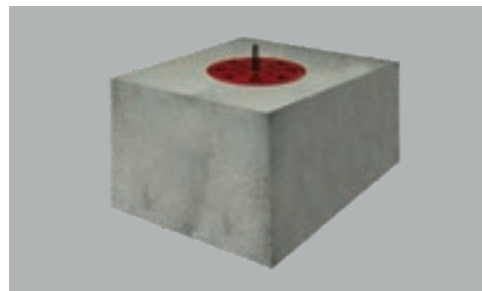
Engineered Solution

Ceiling/Floor Fire Stopping



Makeshift Method

HoldRite® HydroFlame™  
Pro Series Sleeves



Engineered Solution

Sink



Makeshift Method

Sink



Engineered Solution

# A valued member of the RWC family of brands

RWC is a powerful family of innovative brands that deliver, control, optimize and solve to make our customers' lives easier. As part of the RWC family, HoldRite® adds value through providing plumbing and firestop solutions that operate as an efficient system with our other subsidiaries.

We own every part of our manufacturing process from concept to delivery, and strive each day to ensure the quality of our products. HoldRite® products have been designed and manufactured in the USA since 1982.

HoldRite® has created a national footprint with strategically placed locations across the United States. With allied resources in Georgia, Alabama, Tennessee, Nevada and California, HoldRite® is able to distribute patent protected products to consumers in North America.

## **Converting makeshift methods into engineered solutions since 1982**

In 1982, Master Plumber George Hubbard designed a pipe support solution (The HoldRite® 101-18) to replace the time-consuming and labor-intensive method of cutting blocks of wood for every job. Hubbard's invention revolutionized plumbing in North America by ushering in the plumbing methodology of secondary pipe support.

Today, HoldRite® is an industry leader in products and services including secondary pipe supports, acoustic noise and vibration plumbing solutions, sleeving and firestop systems, equipment support, water heater accessories, and drain waste and vent (DWV) solutions.

Understanding your perspective has always been in our DNA. Even though we've evolved into an international company and recognized brand leader, we know our value comes from providing superior products and services for building projects, without increasing costs.

Thank you for giving us the opportunity to pioneer new products and transform the plumbing industry together.

[holdrite.com](http://holdrite.com)





## Protect property against the spread of fire, smoke & poisonous gases

HoldRite® HydroFlame™ Pro Series UL recognized water, smoke, and firestop system provides a water seal for unwanted water intrusion while still protecting against the spread of fire, smoke and gases. Water dam and water module accessories for added water-tight requirements are also available.



Commonly observed field devised methods may result in providing a dangerous pathway for water, smoke, gas or fire.

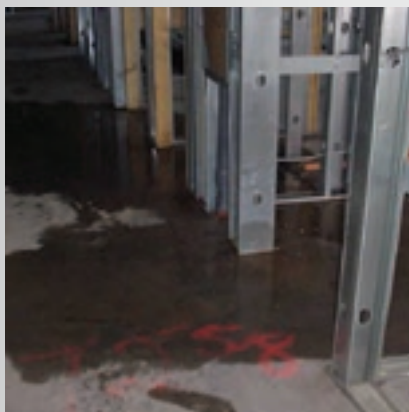


Damage from this hotel fire was contained to the upper floors, but water damage destroyed walls, ceilings, floors, furniture, rugs, artwork, restaurants and stores all the way down to the lower floors.

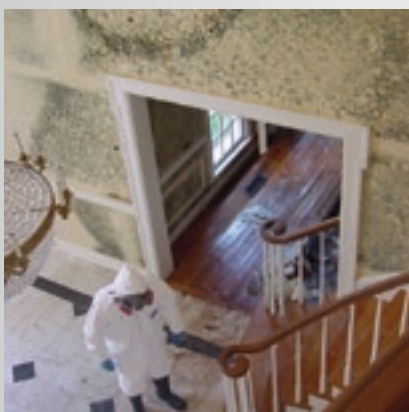




## Safeguard property from water damage & mold



Natural disasters, such as hurricanes and other storms, may cause schedule delays and water damage to buildings under construction. Excessive rain often causes costly water damage to ceilings, walls and floors.



Water damage may cause significant health concerns and spawn lawsuits regarding mold issues. Failure of water lines, leaking water heaters, overflowing dishwashers, toilets and sinks, or misuse of other appliances may result in unwanted water intrusion that results in significant insurance claims in occupied buildings. More property claims are paid out due to water damage than fire damage.



Many buildings are designed to house data communication networks and computer equipment. Such hi-tech investments are critical to corporations, healthcare facilities, military installations, government infrastructure and universities. HoldRite® HydroFlame™ Pro Series protects these high dollar assets from unwanted destruction due to water, as well as fire and smoke.

# Transforming firestop solutions through industry collaboration



## Contractor

### HoldRite® HydroFlame™ Pro Series

#### Interlocking Telescoping Sleeve Design

- Eliminate the need to cut sleeves on the jobsite – quick installs
- 6 times faster install, compared to makeshift methods
- No caulking or mineral wool required
- Meet and exceeds building code requirements and UL Listed
- Telescoping sleeve allows height range of 2 ½" to 12"
- Extension sleeves available for greater than 12" thick slabs
- Accommodates various pipe types, conduits and cables sizes ½" to 6"
- Versatile product minimizes inventory variations
- Measurement guide system built into sleeves (US and Metric)
- Easy to order

#### Locator Whiskers

- Easily locate buried sleeves after concrete pour
- Quickly identify plastic pipe (red whiskers) or metal pipe (black whiskers) sleeve penetrations

#### Safety Cap

- Threaded cap allows for easy, non-destructive removal
- Meets OSHA hole cover requirements
- Safety cap attaches directly to telescoping or non-telescoping sleeve designs

#### Interlocking Nail-In Base

- Allows mixed sizes to mount together
- Ideal for layout alignment or tight locations
- Quickly identify plastic pipe (red base) or metal pipe (black base) sleeve penetrations

#### Water Tight Mid-Body Seal

- Seal design ideally grips pipe with up to 10X greater contact with pipe than other manufactured sleeve devices
- Substantially greater contact at the small end of the pipe range
- UL W-Rated
- Allows for movement – important in seismic zones
- Allows for off-center penetrations
- Aids with acoustic noise and vibration isolation

#### HoldRite® HydroFlame™ Custom Built Solutions

- Custom designed for your project specifications
- Custom crafted risers are ideal for thick concrete pours
- Easy to install – Set it and forget it!
- Meet and exceeds building code requirements, UL Listed
- UL W-Rated





## Wholesale Distributor

- Significant new revenue streams
- Easy to order, stock and inventory
- Sleeves allow for multiple pipe size ranges and material types to pass through
- Meets and exceeds building, fire and safety codes – UL Listed
- Sleeves are clearly labeled and color-coded, for simple selection
- Quick and easy to order through HoldRite
- HydroFlame Pro Series typically ship within 48 hours
- Made in the USA
- No-charge submittal and specification compliance assistance from HoldRite, for your customers
- No-charge material take-off service through HoldRite, for your customers



## Engineer/Architect

- UL Listed firestop devices
- Meet and exceed building and fire codes in the USA and Canada – UL and cUL Listed
- Protect property and occupants against damage from water, fire, smoke, gas, noise and seismic issues
- Prevent water, moisture and mold intrusion during construction and post-construction
- Isolate hurricane, storm and water damage
- Protect Owner/Developer interests
- FBC System Compatible – CPVC compatibility
- Integrate superior product without increasing installed costs
- Product specifications and custom specification authorship assistance available upon request
- Fully tested and rated (data available upon request)
- Use with combustible, non-combustible and insulated pipes, cables, conduits, etc.
- Extensive accessories available
- Eliminate one area for field installer error
- Complies with OSHA requirements for hole covers
- Made in the USA
- Easily available at Wholesale Distribution throughout the USA and Canada
- 3D CAD, BIM models and installation detail drawings available



## Owner/Developer/General Contractor

- Meet and exceed building and fire codes
- UL Listed firestop devices
- Protect property and occupants against damage from water, fire, smoke, gas, and seismic issues
- Potentially reduce insurance costs
- Reduce overall construction costs
- Reduce today's field installation errors and tomorrow's potential concerns
- Reduce time to dry floors and complete building – especially in high-rise construction
- Enhance safety and quality on the job with built-in OSHA compliant safety hole covers
- Watertight floor penetrations compartmentalize future water damage within finished building
- Expedite cover inspections with built-in UL Listed firestop devices
- Increase safety by keeping floor surfaces free of water and ice during construction, minimizing slip and fall hazards
- Eliminate field applied sealants reducing human error factors, while improving UL fire ratings
- Easily available at Wholesale Distribution throughout the USA and Canada – fast lead times
- Made in USA





# Introducing HoldRite® HydroFlame™ Sealants

Introducing HoldRite® HydroFlame™ Firestop and acoustic Sealants, Intumescent Wrap Strips, Intumescent Pipe Collars and Putty Pads

You spoke. We listened. At HoldRite, our goal is to understand your perspective so that we can continue to provide you with firestop solutions that exceed your expectations. Previously, our product assortment focused strictly on cast-in-place solutions. Now, based on your feedback, we have expanded our offering to include installation solutions to expand from 36 UL System Listings, to more than 260, with the intent to become your single-source sleeving and firestop provider.

Introducing HoldRite's all-new series of firestop sealants, wraps strips, pipe collars and putty pads, created to work efficiently with a wide variety of wall and floor application solutions for both commercial and residential construction, for both wood-framed and concrete construction.

## Sealants

HydroFlame sealants protect vertical and horizontal construction assemblies from smoke and acoustic penetration, and help prevent intrusion of flames and gases. Our sealants are compatible with a wide range of materials, including interior rated gypsum, concrete, and block walls, as well as rated concrete floors, concrete over metal decking floors and wood floor ceiling assemblies. Additionally, HydroFlame sealants work with a variety of materials, such as cast iron, steel, steel conduits, copper pipe and tubing as well as non-metallic pipes such as PVC, CPVC, ABS, PVDF PEX, PP pipes and more. Sealants can also be used around various cables/bundles and sheet metal ductwork.

## Wrap Strips

The HydroFlame Wrap Strip is made of a high-performance, flexible, intumescent material that forms a protective char when exposed to heat, in order to prevent the passage of flames and toxic gases. Use HydroFlame Wrap Strips with fire rated assemblies, large combustible pipe, insulated pipe penetrations within concrete/masonry walls, concrete and wood floors, and gypsum wall assemblies. They can also be used with a custom collar.

## Pipe Collars

HydroFlame Pipe Collars are pre-assembled with highly intumescent material and are ideal for use in open and closed through-penetration firestop systems. Featuring an easy interlocking tab for efficient installation, our unique design helps save time and expense, when compared to our competitors' smaller collars. Use HydroFlame Pipe Collars for firestopping larger pipe penetrations. Collars are compatible with concrete floor and wall assemblies, as well as on gypsum wall and rated wood floors.

## Putty Pads

HydroFlame Putty Pads are made of a moldable, non-curing, single component fire-rated material. Used for membrane-penetration firestop systems, our putty expands when exposed to heat to form an insulating char. This protects against the spread of flames, smoke, gas and water through penetration openings. No mixing is required for application, and this product can be used on metal or nonmetallic electrical box outlets, and electrical or mechanical cabinets.

Read on to explore HoldRite's all-new assortment of firestop solutions, **developed with your needs in mind**. Our sealants, wrap strips, pipe collars, putty pads and firestop accessories are designed to ensure the highest level of safety and efficiency on your job site.



## **HoldRite<sup>®</sup> HydroFlame™ 50**

### **Smoke & Acoustic Sealant**

- Easily dispensed using a caulking gun
- Provides a flexible paintable sealant once cured
- Meets LEED criteria
- Low VOC content
- FBC™ system compatible
- Easily cleans up with water
- Clean Air Gold certified
- High STC Rating 69
- 2 Year Shelf Life



## **HoldRite<sup>®</sup> HydroFlame™ 100**

### **Firestop Sealant**

- Flexible (Elastomeric)
- Low VOC
- Meets LEED Criteria
- Paintable
- Water based
- Excellent freeze-thaw
- High STC rating 65
- 3 year shelf life
- FBC™ system compatible
- Easily dispensed (caulking gun or trowel)
- G21 testing for obstruction of mold growth
- Clean Air Gold certified



## **HoldRite<sup>®</sup> HydroFlame™ 200**

### **Firestop Sealant**

- Flexible (Elastomeric)
- Low VOC
- Meets LEED Criteria
- Paintable
- Water based
- Excellent freeze-thaw
- High performance intumescent
- Clean Air Gold certified
- 3 year shelf life
- FBC™ system compatible
- Easily dispensed (caulking gun or trowel)
- G21 testing for obstruction of mold growth





## HoldRite® HydroFlame™ Pipe Collar

- Easy and fast installation
- Labor savings by not having to measure material
- Highly intumescent
- Economical solution for plastic pipes
- FBC™ system compatible
- Approved for PVC, CPVC, FRPP, ABS and PVC/ABS foam core insulations and more
- Clean Air Gold certified



## HoldRite® HydroFlame™ Putty Pads

- Possesses intumescent properties; expands when exposed to fire.
- No volatile solvents, which makes it particularly useful when installing in confined spaces or occupied areas
- Does not have asbestos fillers
- A single component putty system; no mixing necessary and no required additives
- DOT Classification is not Regulated
- Applied by hand
- Easy to install
- Adheres to all common building common surfaces
- Clean Air Gold certified



## HoldRite® HydroFlame™ Wrap Strips

- No curing time
- Excellent freeze-thaw properties
- Simple to apply
- Systems up to 12"(pvc)
- Flexible
- Forms hardened char after expansion
- Highly intumescent
- Can be installed from the topside of floor eliminating the need for ladders
- FBC™ system compatible
- Clean Air Gold certified
- Can also be installed with a custom collar
- Approved for PVC, CPVC, FRPP, ABS and PVC/ABS foam core insulations and more

# HoldRite® HydroFlame™ Sealants

## Product & Services Directory



**Sealants**  
Page 19



**Pipe Collars**  
Page 22



**Wrap Strips**  
Page 24



**Putty Pads**  
Page 23



**Caulking Gun**  
Page 25



**Specifications**  
Page 63



**VIP No Charge Services**  
Page 69



**Index**  
Page 75





## HoldRite® HydroFlame™ 50

### Smoke & Acoustic Sealant

HoldRite® HydroFlame™ 50 is a smoke and acoustic sealant used to seal around penetrations in non-rated horizontal or vertical construction assemblies. Works in conjunction with and compliments HoldRite Silencer series in wall stud noise dampening systems. When properly installed, Hydroflame 50 will prevent the passage of cold smoke through the penetration opening to the other side of the non-rated assembly while also providing an excellent sound barrier by preventing the transfer of airborne sound and other vibrations from passing through to the other side of the assembly.

- Easily dispensed using a caulking gun
- Provides a flexible paintable sealant once cured
- Meets LEED criteria
- Low VOC content
- FBC™ system compatible
- Easily cleans up with water.
- Clean Air Gold certified
- High STC rating 69
- 2 year shelf life
- Safe for plastic pipes
- Will not react to bituminous coatings on cast iron pipes

Type	UL Rating	Status
Smoke / Gas	L	✓

Model Number	Description	Size	Box Qty
HF50-20S	Smoke & Acoustic Sealant (White)	20.2 oz. Sausage	12



## HoldRite® HydroFlame™ 100 Firestop Sealant

HoldRite® HydroFlame™ 100 is an elastomeric water based single component non-sag firestop sealant. It is convenient in areas and conditions where dynamic movement is expected. A perfect firestop sealant for new and existing penetrations through interior rated gypsum, concrete, and block walls as well as rated concrete floors, concrete over metal decking floors, and wood floor ceiling assemblies. When properly installed, HydroFlame 100 will prevent the passage of smoke, gasses, and flames through openings around penetrating items. HydroFlame 100 is ready to be dispensed out of the package and does not require thinning or mixing. It is simple to install and can be dispensed out of any standard caulking gun or bulk loader that is designed for 10, 20, or 30-ounce packaging. Additionally, It can easily be troweled out of a 5-gallon bucket. HydroFlame 100 UL systems are rated up to 4 hours as tested in conformance to ASTM E814 or UL 1479.

- Flexible (Elastomeric)
- Low VOC
- Paintable
- Water based
- Excellent freeze-thaw
- High STC Rating 65
- 3 year shelf life
- FBC™ system compatible
- Easily dispensed (caulking gun or trowel)
- G21 testing for obstruction of mold growth
- Clean Air Gold certified
- Safe for plastic pipes

Type	UL Rating	Status
Water	W	✓
Smoke / Gas	L	✓
Fire	F	✓
Thermal	T*	✓

\*T-Rating when penetrant is non-metallic

Model Number	Description	Size	Qty
HF100-10C	Firestop Sealant (Red)	10.3 oz. Cartridge	12 per box
HF100-20S	Firestop Sealant (Red)	20.2 oz. Sausage	12 per box
HF100-30C	Firestop Sealant (Red)	30 oz. Cartridge	12 per box
HF100-5B	Firestop Sealant (Red)	5 Gal.	36 per pallet





## HoldRite® HydroFlame™ 200 Firestop Sealant

HoldRite® HydroFlame™ 200 is an elastomeric water based single component non-sag highly intumescent firestop sealant. It is convenient in areas and conditions where dynamic movement is expected. A perfect firestop sealant for new and existing penetrations through interior rated gypsum, concrete, and block walls as well as rated concrete floors, concrete over metal decking floors, and wood floor ceiling assemblies. When properly installed, HydroFlame 200 will prevent the passage of smoke, gasses, and flames through openings around penetrating items. HydroFlame 200 is ready to be dispensed out of the package and does not require thinning or mixing. It is simple to install and can be dispensed out of any standard caulking gun or bulk loader that is designed for 10, 20, or 30-ounce packaging. It can also easily be troweled out of a 5-gallon bucket. HydroFlame 200 UL systems are rated up to 4 hours as tested in accordance to ASTM E814 or UL 1479 and CAN/VLC-S115 testing standards.

Type	UL Rating	Status
Water	W	✓
Smoke / Gas	L	✓
Fire	F	✓
Thermal	T*	✓

\*T-Rating when penetrant is non-metallic

- Flexible (Elastomeric)
- Low VOC
- Paintable
- Water based
- Excellent freeze-thaw
- High performance intumescent
- Clean Air Gold certified
- 3 year shelf life
- FBC™ system compatible
- Easily dispensed (caulking gun or trowel)
- G21 testing for obstruction of mold growth
- Safe for plastic pipes

Model Number	Description	Size	Qty
HF200-10C	Firestop Sealant (Red)	10.3 oz. Cartridge	12 per box
HF200-20S	Firestop Sealant (Red)	20.2 oz. Sausage	12 per box
HF200-30C	Firestop Sealant (Red)	30 oz. Cartridge	12 per box
HF200-5B	Firestop Sealant (Red)	5 Gal.	36 per pallet



## HoldRite® HydroFlame™ Pipe Collar

HoldRite® HydroFlame™ Pipe Collars are prefabricated for open and closed through-penetration firestop systems using 1-1/2" (38 mm) to 6" (152 mm) plastic pipe. An easy interlocking tab assures fast and easy installation. The design of the collar greatly reduces the time and expense that is required to install competitive collars. Tested in accordance to ASTM E814 or UL 1479 and CAN/VLC-S115 testing standards.

- No curing time
- Easy and fast installation
- Labor savings by not having to measure material
- Highly intumescent
- Economical solution for plastic pipes
- FBC™ system compatible
- Approved for PVC, CPVC, FRPP, ABS and PVC/ABS foam core insulations and more
- Clean Air Gold certified

Type	UL Rating	Status
Fire	F	✓
Thermal	T*	✓

\*T-Rating when penetrant is non-metallic

Model Number	Description	Size	Box Qty
HF-PC-0150	Pipe Collar	1½"	12
HF-PC-0200	Pipe Collar	2"	12
HF-PC-0300	Pipe Collar	3"	6
HF-PC-0400	Pipe Collar	4"	6
HF-PC-0600	Pipe Collar	6"	2





# HoldRite® HydroFlame™ Putty Pads

HoldRite® HydroFlame™ moldable putty pads are a non-curing single component fire-rated material for membrane-penetration firestop systems. HydroFlame® Putty will intumesce and expand when exposed to heat, forming an insulating char. In the event of a fire, putty pads will prevent the spread of flames, smoke and gas through penetration openings. Putty pads are applied by hand and mixing is never required. HydroFlame Putty Pads are rated for up to 3 hours as tested in accordance to ASTM E814, UL 1479 and ULC/ CAN4-S115-M test standards. HydroFlame Putty Pads are designed to be used in conjunction with metallic or non-metallic electrical box outlets.

- Possesses intumescent properties; expands when exposed to fire
- No volatile solvents, which makes it particularly useful when installing in confined spaces or occupied areas
- Does not have asbestos fillers
- A single component putty system; no mixing necessary and no required additives
- DOT Classification is not regulated
- Applied by hand
- Easy to install
- Adheres to all common building common surfaces
- Clean Air Gold certified

Type	UL Rating	Status
Smoke / Gas	L	✓
Fire	F	✓

Model Number	Description	Size	Box Qty
HF-PP-1	Putty Pad	7" x 7" x 1/8"	20



## HoldRite® HydroFlame™ Wrap Strips

HoldRite® HydroFlame™ Wrap Strip is a high performance highly intumescent flexible wrap strip that is designed to expand when exposed to heat. Wrap Strips are intended to be used around combustible pipes and insulated pipes as a solution to seal off these challenging pipes in the event of a fire. When Wrap Strip activate and intumesces due to heat, it will form a robust char that will seal off the opening around the penetrating items or will close off completely the annular space that is exposed once combustible pipes melt away to prevent the passage of hot gasses and flames to migrate to the other side of a fire rated assembly. Tested in accordance to ASTM E814, UL 1479 and ULC/CAN4-S115 test standards.

- No curing time
- Excellent freeze-thaw properties
- Simple to apply
- Systems up to 12" (PVC)
- Flexible
- Forms hardened char after expansion
- Highly intumescent
- Can be installed from the topside of floor eliminating the need for ladders, refer to specific UL details
- FBC™ System Compatible
- Clean Air Gold certified
- Can also be used with Custom Collar

Type	UL Rating	Status
Smoke / Gas	L	✓
Fire	F	✓
Thermal	T*	✓

\*T-Rating when penetrant is non-metallic

Model Number	Description	Size	Box Qty
HF-WS14-0100	Wrap Strips	1" x 12' Roll	6
HF-WS14-0200	Wrap Strips	2" x 12' Roll	4
HF-CC-0100	Custom Collar	1" x 50' Roll	1
HF-CC-0200	Custom Collar	2" x 50' Roll	1



HF-CG-20SP | Premium Caulk Gun Shown

## HoldRite® HydroFlame™ Caulk Guns

- Designed for standard viscous materials
- Full size handle for comfortable, efficient dispensing
- Double gripping plate technology for no slipping and long life
- Convenient rotating swivel barrel
- Durable sausage pistons prevent bag-wrap



## HoldRite® HydroFlame™ Follow Plates

- Neoprene seal can be used with straight & tapered bucket
- For 2" diameter barrel bulk gun
- 5 Gal. Diameter- 11.5" With 1" neoprene seal
- No threaded barrel docking (air tight o-ring)



20 oz.



32 oz.

## HoldRite® HydroFlame™ Replacement Tips

- Easily replace caulking tips

Model Number	Description	Size	Box Qty
HF-CG-20SP	Premium Caulk Gun with logo	20 oz.	
HF-CG-20SE	Economy Caulk Gun	20 oz.	
HF-CG-32B	Bulk Loading Caulk Gun	32 oz.	
HF-FP-5	Bulk Loading Follow Plate	5 Gal.	
HF-CG-T20	Replacement Tips (Cone)	20 oz.	
HF-CG-T32	Replacement Tips (Cone)	32 oz.	





## Transforming Firestop Solutions with HoldRite® HydroFlame™ Pro

The evolution of a lab-tested and UL Listed cast-in-place firestop solution continues with the introduction of the HoldRite HydroFlame Pro Series. Finally, an easy to specify, stock, order, and install firestop solution is available on wholesale distributors' shelves throughout North America. Finished are the decades of frustration, of significant pre-planning requirements, complex purchase orders, tight delivery deadlines, and jobsite fabrication challenges. Thanks to the HoldRite HydroFlame Pro Series, firestop solutions are available to stock right now!

The HoldRite HydroFlame Pro Series' novel design transforms how cast-in-place firestop solutions are specified, installed, and distributed within the North American building construction industry. Its patent-protected telescoping design and standardized packaging make the product easy to stock, whether by the wholesale distributor, by the contractor or at the jobsite. Through innovative product technology, HoldRite® enthusiastically looks forward to providing the premier firestop solution for the building construction requirements of engineers, contractors and wholesale distributors.

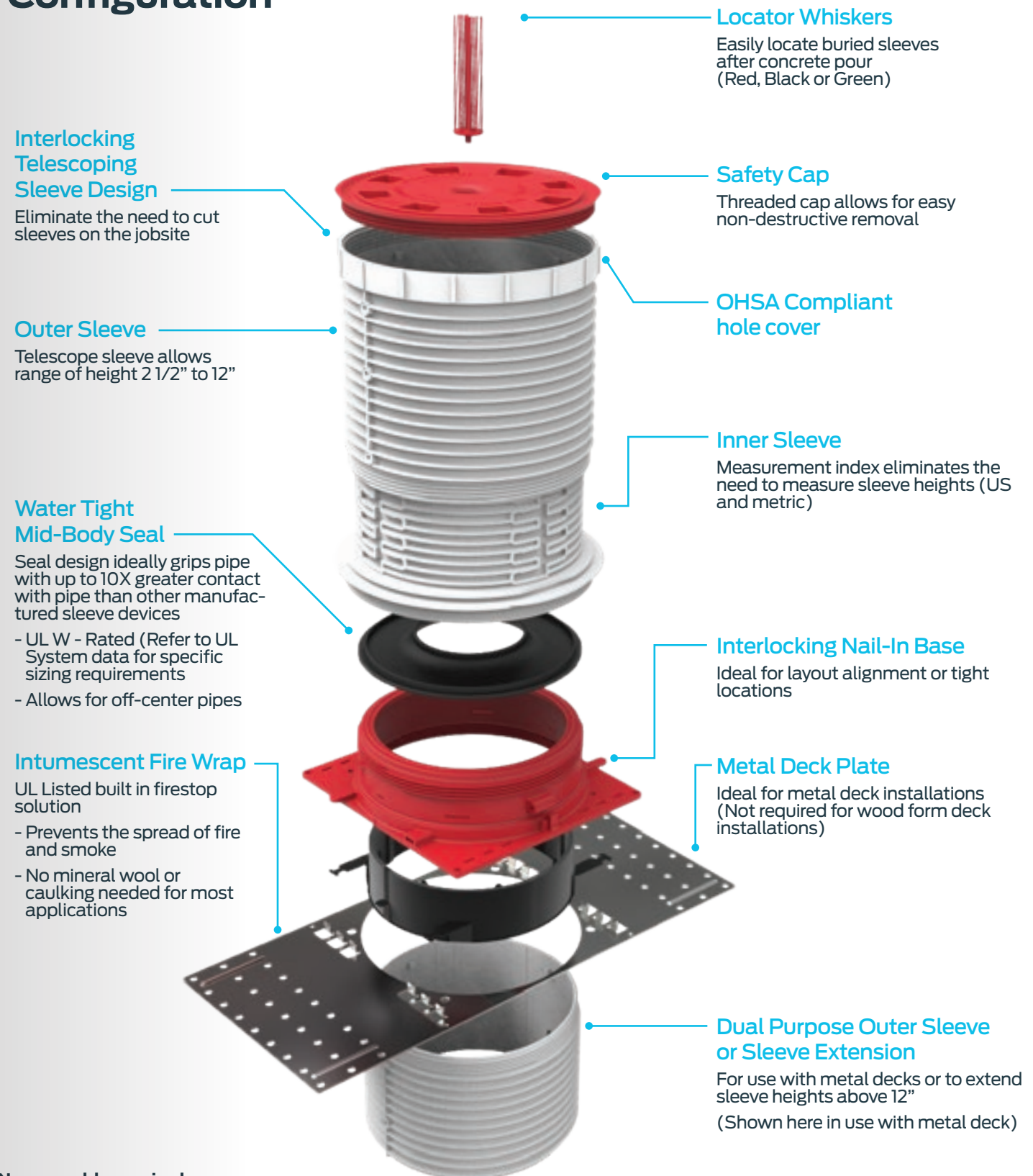
The HoldRite® Team is proud to manufacture the HydroFlame™ Pro Series in the USA, and to ensure it meets and exceeds building code requirements, protects the project against the dangers of fire, gas and smoke spread, safeguards property from water damage and mold, and eliminates field devised installation methods from building projects.

**Available NOW for purchase at your wholesale distributor of choice.**





# Product Configuration



No assembly required

# Transforming Firestop Solutions

## Telescoping Sleeves

- Eliminate the need to cut sleeves on most jobsites

## Locator Whiskers

- Locate buried sleeves after concrete pour

## Safety Cap

- OSHA compliant hole cover
- Helps keep jobsite and installers safe

## For Wood or Metal Form Decks

- Telescoping or non-telescoping design

## Firestop a Wide Variety of Pipe Type & Sizes

- Material type and pipe sizes easily identifiable (1/2" to 6")

## Superior Seal

- UL W-Rated (Refer to UL System data for sizing requirements)

## Interlocking Nail-In Base

- Ideal for alignment layout and tight install locations

## Numerous Accessories Available

- Telescoping extension, water module, water dam, aerator adaptor box, and safety cap tool

## Faster Install

- Up to 6 times faster to install than makeshift methods

## Easy To Stock

- Available in stock at your local wholesale distributor

## UL Listed Firestop Device

- Meets and exceeds building code requirements



Patented and Patent Pending.



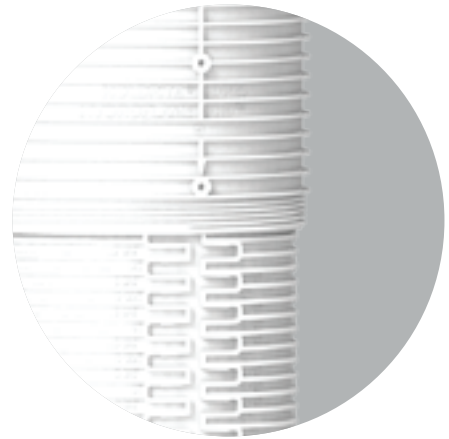
FBC™ System Compatible indicates that this products has been tested, and is monitored on an ongoing basis, to assure its chemical compatibility with FlowGuard Gold®, BlazeMaster® and Corzan® piping systems and products made with TempRite® Technology.

The FBC Compatible Logo, FBC™, FlowGuard Gold®, BlazeMaster®, Corzan®, and TempRite® are trademarks of Lubrizol Advanced Materials Inc. or its affiliates.



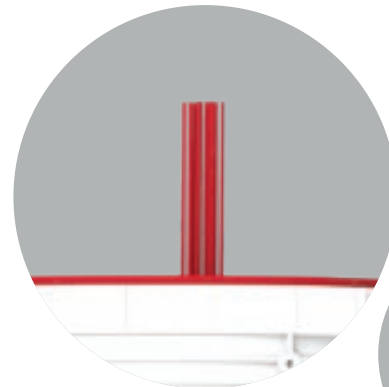
## HoldRite® HydroFlame™ Pro Series Interlocking Telescoping Sleeve Design

- Eliminate the need to cut sleeves on the jobsite
- Adjust sleeve to desired height 2 ½" to 12"
- Extension sleeves available for greater than 12"
- Accommodates various pipe, conduit and cable types and sizes ½" to 6"
- Non-telescoping design also available at 7 ¾" tall
- Faster install over traditional methods or other manufactured designs
- Measurement guide system built into sleeves (US and Metric)
- Significantly reduces the number of SKU's required to stock shelves or complete job



## HoldRite® HydroFlame™ Pro Series Locator Whiskers

- Easily locate buried sleeves after concrete pour
- Quickly identify plastic pipe (red whiskers) or metal pipe (black whiskers) sleeve penetrations
- Green whiskers also available



## HoldRite® HydroFlame™ Pro Series Safety Cap

- Threaded cap allows for easy non-destructive removal
- Meets OSHA hole cover requirements
- Safety Cap Tool available for tightening or untightening
- Allows for locator whiskers to attach directly to safety cap
- Safety cap attaches directly to telescoping or non-telescoping sleeve designs



## HoldRite® HydroFlame™ Pro Series Interlocking Nail-In Base

- Ideal for alignment layout and tight install locations
- Fast and easy installation
- Quickly identify plastic pipe (red base) or metal pipe (black base) sleeve penetrations



# Reduce Installation costs with the HoldRite® HydroFlame™ Pro Series

**Application Cost Savings Analysis Example**  
 Install sleeve and firestop for a 2" pipe through an 8" thick concrete slab on a wood form deck.

## Problematic Plastic Concrete Sleeve Makeshift Method

Installation Steps	Approx. Mat. Cost	Labor Time
1. Select 4" sleeve, measure and mark for saw cutting	\$3.00	1 minute
2. Cut sleeve, in prep for re-assembly to slab height of 8"		1 minute
3. Build sleeve to height with screw gun, screws and tape	50¢	3 minutes
4. Nail sleeve to form deck (concrete poured by others)		2 minutes
5. Remove/demolish sleeve out of hole		5 minutes
6. Buy material, cut, build and install hole cover (OSHA)	\$1.00	2 minutes
7. Clean-up sleeve debris on floor below		1 minute
8. Remove hole cover. Install pipe with riser clamp		2 minutes
9. Collect, store and re-distribute hole cover up stairs		1 minute
10. Remove riser clamp for access to annular space		1 minute
11. Install and compact mineral wool material into annular space	50¢	2 minutes
12. Install fire caulk to proper thickness and trowel level	\$1.00	2 minutes
13. Re-install riser clamp (and hope pipe didn't settle)		1 minute
14. Clean debris, hands and tools and caulking tube and store for re-use		2 minutes
<b>Totals:</b>		
Approximate Material Costs	\$6.00	
Time		26 minutes
Labor Cost at \$50/hour	\$21.67	
<b>Total Installed Cost (T&amp;M)</b>	<b>\$27.67</b>	

## HoldRite HydroFlame Pro Series™

Installation Steps	Approx. Mat. Cost	Labor Time
1. Select sleeve size and nail it to form deck (concrete poured by others)	\$9.00	2 minutes
2. Remove cap and install pipe with riser clamp		2 minutes
<b>Totals:</b>		
Approximate Material Costs	\$9.00	
Time		4 minutes
Labor Cost at \$50/hour	\$3.33	
<b>Total Installed Cost (T&amp;M)</b>	<b>\$12.33</b>	

Save **\$15.34** per installation over the problematic makeshift method.



## HoldRite® HydroFlame™ Pro Series

### Firestop Sleeve Advantages vs. Commonly Observed Cast-In-Place Devices



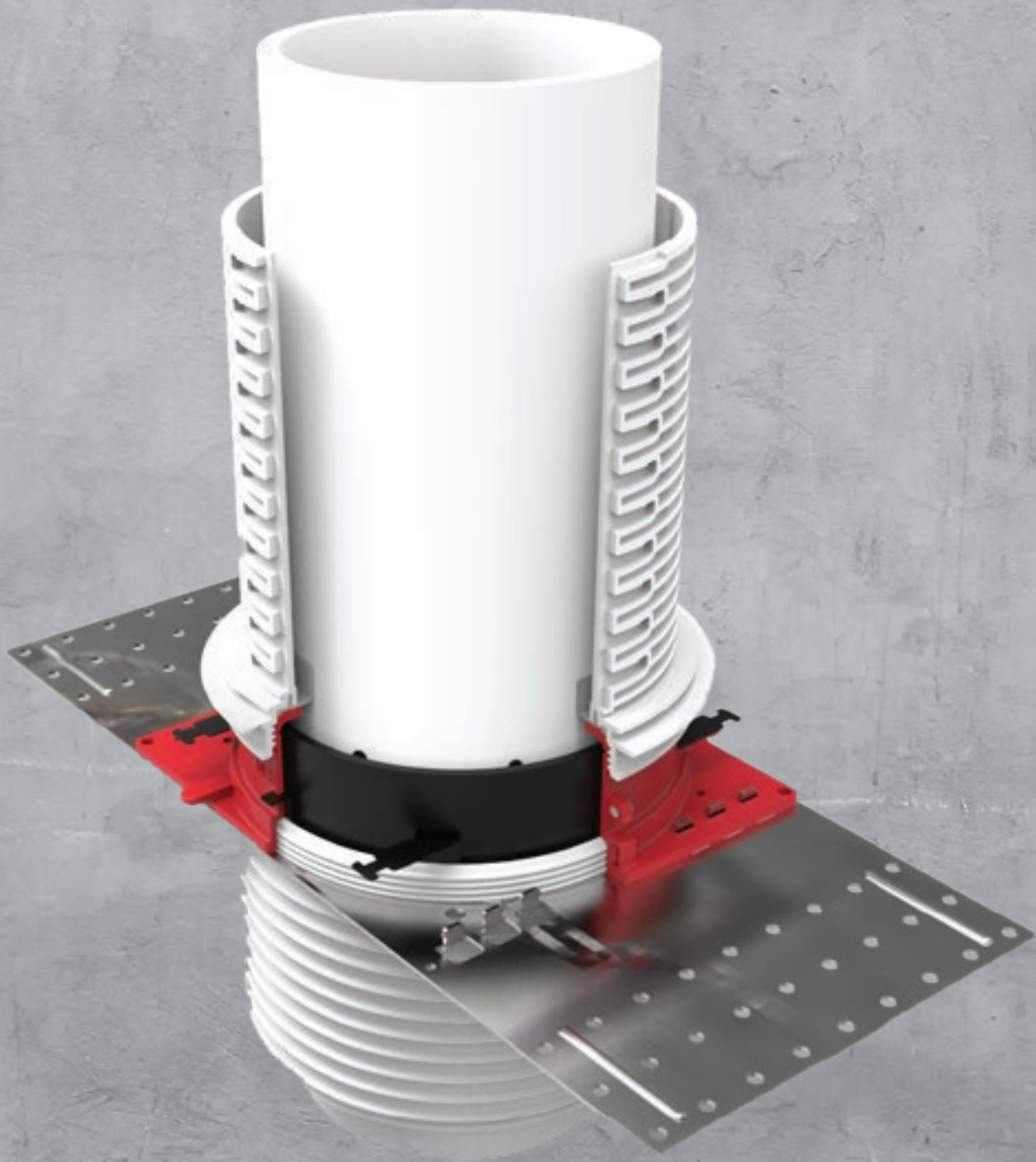
HoldRite® HydroFlame™ Pro Series	Features and Benefits	Commonly Observed Cast-in-Place Sleeves
✓	Adjustable height sleeves	✗
✓	Fast Install	✗
✓	UL W-Rated water-tight mid-body seal (Refer to UL System data for specific sizing requirements)	✗
✓	"Locator whiskers" to locate sleeves after pour	✗
✓	Best safety caps, easiest to remove, without demolition	✗
✓	Aerator adapter available in 2", 3", 4" and 6" varieties	✗
✓	Available exclusively through wholesale distribution	✗
✓	Most stable metal deck kit, and requires just one accessory	✗
✓	UL Fire Rated for 1/2"-6" pipes and conduits without any accessories	✗
✓	Hollow sleeve versions available, if caulking is preferred	✗
✓	MADE IN THE USA	✗
✓	Most stable sleeve height extensions on the market	✗
✓	Excellent shower & floor drain, tub box and toilet sleeve kits	✗
✓	Height markings & straight lines aid in cutting sleeves short	✗







HoldRite  
**HydroFlame<sup>®</sup>**  
PRO



# HoldRite® HydroFlame™ Pro Series

## Product & Services Directory



**Telescoping Firestop Sleeves**  
Page 34



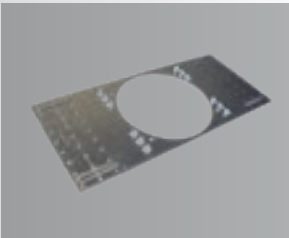
**Non-Telescoping Firestop Sleeves** Page 35



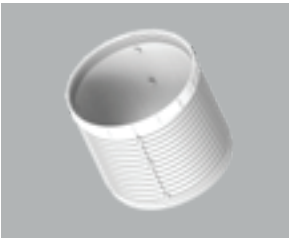
**Telescoping Hollow Sleeves**  
(Sleeves Only) Page 36



**Non-Telescoping Hollow Sleeves** (Sleeves Only) Page 37



**Corrugated Metal Deck Plates**  
Page 38



**Sleeve Extensions**  
Page 39



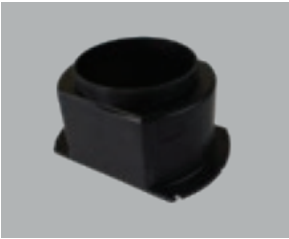
**Water Modules**  
Page 40



**Water Dams**  
Page 41



**Tub Boxes**  
Page 42



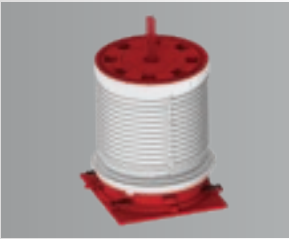
**Aerator Adapters**  
Page 43



**Plastic Shower Drain Sleeves**  
(Drain Not Included)  
Page 44



**Cast Iron Drain Sleeves**  
(Drain Not Included)  
Page 45



**Cable and Line Set Sleeves**  
Page 46



**Closet Flange Sleeves**  
(Flange Not Included)  
Page 47



**Safety Cap Tool**  
Page 47



**Specifications**  
Page 63



**VIP No Charge Services**  
Page 69



**Index**  
Page 75-85



## Holdrite® HydroFlame™ Pro Series Telescoping Firestop Sleeves

- Ideal for flat concrete form decks – cast-in-place
- Ideal for corrugated metal decks (corrugated deck plate required)
- Available for 1/2" to 6" penetrants – piping, conduit, cables, etc.
- For insulated and non-insulated pipes
- Telescoping design adjusts from 8" to 12", in 1/4" increments
- Cut to as short as 2-1/2"
- Black base and black whiskers identifies metal piping system
- Red base and red whiskers identifies plastic or metal piping system
- Includes locator whiskers, to locate buried sleeves and to identify pipe type (metal or plastic)
- Dimensions on sleeves allows for simple height adjustments
- Safety caps meet OSHA hole cover requirements
- Refer to UL System data for specific sizing requirements
- Meets and/or exceeds building code requirements
- Built in fire, smoke, gas and water protection
- UL W-Rated seal, water-tight for most penetrants (Refer to UL System data for specific sizing requirements)
- Allows for contraction, expansion, movement and off-center pipes
- Reduces piping system noise transfer by maintaining annular spacing
- Interlocking base capability assists with layout alignment
- Extensions available for slabs over 12"
- A variety of accessories are available
- UL 50 Pa Ratings

Type	UL Rating	Status
Water	W**	✓
Smoke / Gas	L	✓
Fire	F	✓
Thermal	T*	✓

\*T-Rating when penetrant is non-metallic

\*\*W-Rated- Refer to UL System data for specific sizing requirements

Model Number	Penetrating Pipe Type	Nominal Penetrant Size	Box Qty
HFP-P1	Plastic and Metal	1/2" - 1"	10
HFP-P2	Plastic and Metal	1-1/4" - 2"	10
HFP-P3	Plastic and Metal	2" - 3"	10
HFP-P4	Plastic and Metal	3" - 4"	10
HFP-P6	Plastic and Metal	5" - 6"	2
HFP-M1	Metal	1/2" - 1"	10
HFP-M2	Metal	1-1/4" - 2"	10
HFP-M3	Metal	2" - 3"	10
HFP-M4	Metal	3" - 4"	10
HFP-M6	Metal	5" - 6"	2



1

Cut inner and outer sleeve if desired height is under 8"



2

Lock outer sleeve in place



3

Re-install cap & insert whiskers



4

Nail to form deck



5

Remove cap with Safety Cap Tool or break out with hammer



6

Install pipe





# HoldRite® HydroFlame™ Pro Series Non-Telescoping Firestop Sleeves

- Ideal for flat concrete form decks – cast-in-place
- Ideal for corrugated metal decks (corrugated deck plate required)
- Available for 1/2" to 6" penetrants, piping, conduits, cables, etc.
- For insulated and non-insulated pipes
- 7-3/4" Tall, and can be cut to as short as 2-1/2". Extensions available
- Black base and black whiskers identifies metal piping system
- Red base and red whiskers identifies plastic or metal piping system
- Includes locator whiskers, to locate buried sleeves and to identify pipe type (metal or plastic)
- Dimensions on sleeve allows for simple height adjustment when cutting
- Safety caps meet OSHA hole cover requirements
- UL Listed firestop devices (2 or 3 hour F-ratings)
- Meets and/or exceeds building code requirements
- Built in fire, smoke, gas and water protection
- UL W-Rated seal, water-tight for most penetrants (Refer to UL System data for specific sizing requirements)
- Allows for contraction, expansion, movement and off-center pipes
- Reduces piping system noise transfer by maintaining annular spacing
- Interlocking base capability assists with layout alignment
- A variety of accessories are available
- UL 50 Pa Ratings

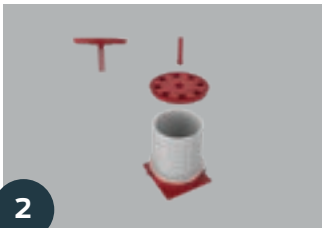
Type	UL Rating	Status
Water	W**	✓
Smoke / Gas	L	✓
Fire	F	✓
Thermal	T*	✓

\*T-Rating when penetrant is non-metallic  
\*\*W-Rated- Refer to UL System data for specific sizing requirements

Model Number	Penetrating Pipe Type	Nominal Penetrant Size	Box Qty
HFP-P1B	Plastic and Metal	1/2" - 1"	10
HFP-P2B	Plastic and Metal	1-1/4" - 2"	10
HFP-P3B	Plastic and Metal	2" - 3"	10
HFP-P4B	Plastic and Metal	3" - 4"	10
HFP-P6B	Plastic and Metal	5" - 6"	2
HFP-M1B	Metal	1/2" - 1"	10
HFP-M2B	Metal	1-1/4" - 2"	10
HFP-M3B	Metal	2" - 3"	10
HFP-M4B	Metal	3" - 4"	10
HFP-M6B	Metal	5" - 6"	2



1  
Cut sleeve if desired height is under 7 3/4"



2  
Re-install cap & insert whiskers



3  
Nail to form deck



4  
Remove cap with Safety Cap Tool or break out with hammer



5  
Install pipe



## Holdrite® Hydroflame™ Pro Series Telescoping Hollow Sleeves

(Sleeve Only, Firestopping By Others)

- UL Listed sleeves, when installed per UL Systems
- Firestopping provided by others (no intumescent material included), can achieve 2 or 3-hour F-Ratings
- Telescoping design adjusts from 8" to 12", in ¼" increments.
- Cut to as short as 4-1/2".
- Available for ½" to 6" penetrants – piping, etc.
- For insulated and non-insulated pipes
- Fast, simple concrete sleeve for flat form decks
- Includes locator whiskers, to locate buried sleeves
- Dimensions on sleeve allows for simple height adjustment when cutting
- Safety caps meet OSHA hole cover requirements
- No field assembly required
- Sleeve remains in slab, unlike typical hollow sleeves
- Accepts HoldRite HydroFlame Pro Series Corrugated Metal Deck Plate, for corrugated deck forms
- Extensions are available for slabs over 12"
- A variety of accessories are available

Type	UL Rating	Status
Water	W*	✓
Smoke / Gas	L	✓
Fire	F	✓
Thermal	T*	✓

\*T-Rating when penetrant is non-metallic

\*W-Rated when used with silicone sealant

Model Number	Penetrating Pipe Type	Nominal Penetrant Size	Box Qty
HFP-H2	Plastic and Metal	¼" - 1 ¼"	10
HFP-H3	Plastic and Metal	1" - 2"	10
HFP-H4	Plastic and Metal	1-1/4" - 3"	10
HFP-H5	Metal	2-½" - 4"	10
HFP-H7	Metal	4" - 6"	2

**Suffix "-S" added to model number provides a mid-body water seal**



1

Cut inner and outer sleeve if desired height is under 8"



2

Lock outer sleeve in place



3

Re-install cap & insert whiskers



4

Nail to form deck



5

Remove cap with Safety Cap Tool or break out with hammer



6

Install pipe



7

Install mineral and fire caulking as required



# Holdrite® Hydroflame™ Pro Series Non-Telescoping Hollow Sleeves

(Sleeve Only, Firestopping By Others)

- UL Listed sleeves, when installed per UL systems
- Firestopping provided by others (no intumescent material included), can achieve 2 or 3-hour F-Ratings
- 7-3/4" Non-telescoping design. Cut to as short as 4-1/2".
- Available for 1/2" to 6" penetrants – piping, etc.
- For insulated and non-insulated pipes
- Fast, simple concrete sleeve for flat form decks
- Includes locator whiskers, to locate buried sleeves
- Dimensions on sleeve allows for simple height adjustment when cutting
- Safety caps meet OSHA hole cover requirements
- No field assembly required
- Sleeve remains in slab, unlike typical hollow sleeves
- Accepts HoldRite HydroFlame Pro Series Corrugated Metal Deck Plate, for corrugated deck forms
- Extensions are available
- A variety of accessories are available

Type	UL Rating	Status
Water	W*	✓
Smoke / Gas	L	✓
Fire	F	✓
Thermal	T*	✓

\*T-Rating when penetrant is non-metallic  
 \*W-Rated when used with silicone sealant

Model Number	Penetrating Pipe Type	Nominal Penetrant Size	Box Qty
HFP-H2B	Plastic and Metal	1/4" - 1 1/4"	10
HFP-H3B	Plastic and Metal	1" - 2"	10
HFP-H4B	Plastic and Metal	1-1/4" - 3"	10
HFP-H5B	Metal	2-1/2" - 4"	10
HFP-H7B	Metal	4" - 6"	2

Suffix “-S”added to model number provides a mid-body water seal



1  
 Cut sleeve if desired  
 height is under 7 3/4"



2  
 Re-install cap & insert whiskers



3  
 Nail to form deck



4  
 Remove cap with Safety Cap Tool  
 or break out with hammer

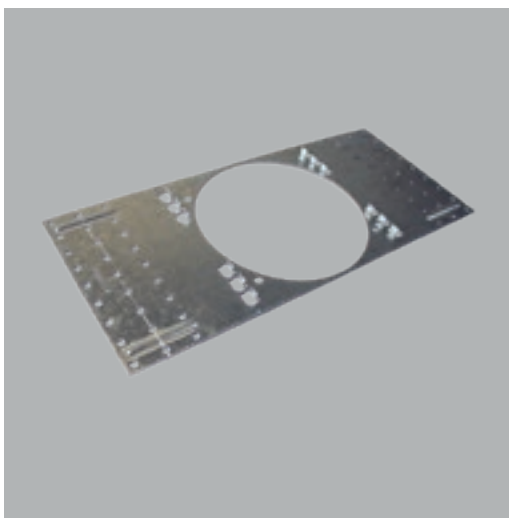


5  
 Install pipe



6  
 Install mineral and fire  
 caulking as required





## HoldRite® HydroFlame™ Pro Series Corrugated Metal Deck Plates

- For use with concrete pours over corrugated metal decks
- Assembles directly to HoldRite HydroFlame Pro Series Firestop Sleeves
- Sizes available for 1", 2", 3", 4", and 6" sleeves
- Superior strength and stability
- One-piece metal deck solution

(\*Must be ordered with HydroFlame Pro Series Sleeves)

Model Number	Penetrating Pipe Type	Used With	Nominal Penetrant Size	Box Qty
HFPCD1	Plastic and Metal	HFP-P/M1, HFP-P/M1B, HFP-H2, HFP-H2B	1/4" - 1-1/4"	10
HFPCD2	Plastic and Metal	HFP-P/M2, HFP-P/M2B, HFP-H3, HFP-H3B	1" - 2"	10
HFPCD3	Plastic and Metal	HFP-P/M3, HFP-P/M3B, HFP-H4, HFP-H4B	1-1/4" - 3"	10
HFPCD4	Plastic and Metal	HFP-P/M4, HFP-P/M4B, HFP-H5, HFP-H5B	2-1/2" - 4"	10
HFPCD6	Metal	HFP-P/M6, HFP-P/M6B, HFP-H7, HFP-H7B	4" - 6"	10
HFPCD6-DC	Plastic and Metal	HFP-P/M6, HFP-P/M6B, HFP-H7, HFP-H7B	4" - 6"	2

Note: Use of a CD Plate must be accompanied with use of an outer sleeve or sleeve extension, as shown in installation step #3 below.



1

Cut inner and outer sleeve if desired height is under 8"



2

Install CD Plate



3

Install inverted outer sleeve to bottom of base



4

Re-install cap & insert whiskers



5

Install HoldRite HydroFlame Pro Sleeve assembly into corrugated deck



6

Remove cap with Safety Cap Tool or break out with hammer



7

Install pipe



## HoldRite® HydroFlame™ Pro Series Extension Sleeves

- Extends the height of HoldRite HydroFlame Pro Series sleeves by as much as 4 3/4 in 1/4" increments
- No coupling needed for connection to sleeves
- Ideal for use on concrete pours over 12"
- Available for all HoldRite HydroFlame Pro Series sleeve sizes
- Connects to safety caps, water dams, water modules and underside of sleeves

Model Number	Fits Firestop Sleeves	Fits Hollow Sleeves	Nominal Penetrant Size	Box Qty
HFPE1	#1 Firestop Sleeves	#2 Hollow Sleeves	1/4" - 1-1/4"	5
HFPE2	#2 Firestop Sleeves	#3 Hollow Sleeves	1" - 2"	10
HFPE3	#3 Firestop Sleeves	#4 Hollow Sleeves	1-1/4" - 3"	10
HFPE4	#4 Firestop Sleeves	#5 Hollow Sleeves	2 1/2" - 4"	10
HFPE6	#6 Firestop Sleeves	#7 Hollow Sleeves	4" - 6"	2



## HoldRite® HydroFlame™ Pro Series Water Module

- Provides added water protection for HoldRite HydroFlame Pro Series Sleeves
- Prevents debris from falling into annular space around piping
- Pre-installed prior to concrete pour
- Available for all HoldRite HydroFlame Pro Series Sleeve sizes
- Adds 1/2" to the overall height of pro series sleeves
- Accepts safety cap and other HoldRite HydroFlame Pro Series accessories
- UL W-Rated seal, water-tight for most penetrants

Type	UL Rating	Status
Water	W*	✓

Model Number	Fits Firestop Sleeves	Fits Hollow Sleeves	Nominal Penetrant Size	Box Qty
HFPWM1	#1 Firestop Sleeves	#2 Hollow Sleeves	1/2" - 1"	5
HFPWM2	#2 Firestop Sleeves	#3 Hollow Sleeves	1-1/4" - 2"	5
HFPWM3	#3 Firestop Sleeves	#4 Hollow Sleeves	2" - 3"	5
HFPWM4	#4 Firestop Sleeves	#5 Hollow Sleeves	3" - 4"	5
HFPWM6	#6 Firestop Sleeves	#7 Hollow Sleeves	5" - 6"	5

**Note:** Use of a water module is fully optional and not required to obtain a W-rating. The mid-body seal in standard HydroFlame Pro series sleeves already provides a UL W-rating (refer to UL System data for specific sizing requirements).



1

Cut inner and outer sleeve  
if desired height is under 8"



2

Lock outer sleeve in place



3

Remove cap



4

Install water module assembly



5

Re-install cap & insert whiskers



6

Install to form deck



7

Pour concrete to top of sleeve





## HoldRite® HydroFlame™ Pro Series Water Dams

- Adds 2" of overall height to the HoldRite HydroFlame Pro Series Sleeve
- Load-rated for riser clamp support – see product spec sheet
- Installed after concrete pour and safety cap removal
- Impedes water when used with cast-in-place sleeves
- Screws onto HoldRite HydroFlame Pro Series telescoping sleeves or water modules

Model Number	Fits Firestop Sleeves	Fits Hollow Sleeves	Nominal Penetrant Size	Box Qty
HFPWD1	#1 Firestop Sleeves	#2 Hollow Sleeves	1/4" - 1-1/4"	5
HFPWD2	#2 Firestop Sleeves	#3 Hollow Sleeves	1" - 2"	5
HFPWD3	#3 Firestop Sleeves	#4 Hollow Sleeves	1-1/4" - 3"	5
HFPWD4	#4 Firestop Sleeves	#5 Hollow Sleeves	2 1/2" - 4"	5
HFPWD6	#6 Firestop Sleeves	#7 Hollow Sleeves	4" - 6"	5



**1**  
Remove cap with Safety Cap Tool  
or break out with hammer



**2**  
Install 2" Water Dam, add  
threaded sealant if desired



**3**  
Install pipe



## HoldRite® HydroFlame™ Pro Series Tub Boxes

- UL Listed firestop device for bathtub drains
- 3 hour F-Rating
- Built-in fire, smoke and gas protection
- Provides a water tight slab penetration
- Accepts 1-1/2" PVC, ABS, and brass drain pipes using appropriate seal plug (provided with HFPTB-TW-0200)
- Allows for expansion, contraction and movement
- UL W-Rated water seal (Refer to UL System data for specific sizing requirements)
- Built at 10 3/4" tall
- Height can be modified in the field



Model Number	Penetrating Pipe Type	Nominal Penetrant Size	Box Qty
HFPTB-TW-0200	1-1/2" Thin Wall Drain	1-1/2" O.D.	5
HFPTB-NP-0200	1-1/2" Nominal Pipe Size Drain	1-1/2" IPS	5
HFPTB-1.5NP	Plastic and Metal	1-1/2" IPS	10



1

Attach sleeve to Tub Box



2

Install rear legs (cut to height)



3

Nail tub box to form deck



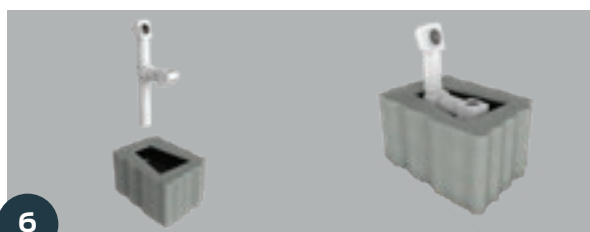
4

Pour concrete to top  
of tub box



5

Remove styrofoam  
& "knock out plug"



6

Slide rubber donut onto drain pipe & insert assembly through  
hole (Donut only required on "TW" model)

Type	UL Rating	Status
Water	W**	✓
Smoke / Gas	L	✓
Fire	F	✓
Thermal	T*	✓

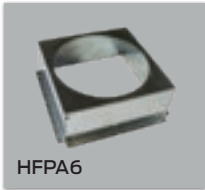
\*T-Rating when penetrant is non-metallic  
\*\*W Rated- refer to UL System data for  
specific sizing requirements.



# HoldRite® HydroFlame™ Pro Series

## Aerator Adapter

- Provides a recess in the underside of the concrete floor, for fitting access
- Available for use with 2", 3", 4" & 6" HoldRite HydroFlame Pro Series Sleeve
- For use in concrete floors as thin as 5-1/2"
- Ideal for Solvent and other high and tight fitting joint access



HFPA6

Model Number	Fits Firestop Sleeves	Fits Hollow Sleeves	Nominal Penetrant Size	Height	Box Qty	Prox. Footprint
HFPA2	#2 Firestop Sleeves	#3 Hollow Sleeves	1/4" - 2"	2 5/8"	10	4" x 6 1/8"
HFPA3	#3 Firestop Sleeves	#4 Hollow Sleeves	1-1/4" - 3"	2 5/8"	10	6" x 6 7/8"
HFPA4	#4 Firestop Sleeves	#5 Hollow Sleeves	2-1/2" - 4"	4"	10	6" x 8 3/4"
HFPA6	#6 Firestop Sleeves	#7 Hollow Sleeves	4" - 6"	3 1/2"	2	10" x 10"



1

Cut inner and outer sleeve as needed, to account for Aerator Adaptor Box height



2

Lock outer sleeve in place



3

Re-install cap & insert whiskers



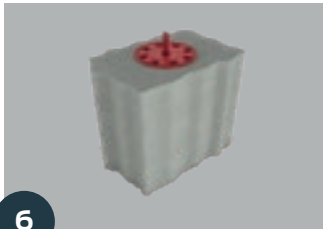
4

Install Aerator Adapter Box



5

Nail to form deck



6

Pour concrete to top of sleeve





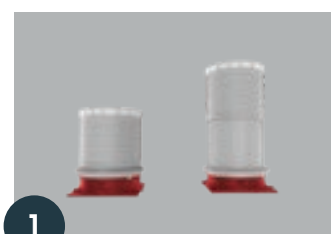
## HoldRite® HydroFlame™ Pro Series Shower Drain Sleeve

- UL Listed firestop device – 3 hour F-Rating
- For 2" shower/floor drains (Drain Not Included)
- Allows for a recessed drain body in shower pans and shower stalls
- Accepts plastic drain piping
- Adjustable height sleeve – up to 14 ¾" slab height
- Extensions available

Type	UL Rating	Status
Water	W*	✓
Smoke / Gas	L	✓
Fire	F	✓

\*W-Rated - refer to UL System data for specific sizing requirements

Model Number	Penetrating Pipe Type	Nominal Penetrant Size	Box Qty
HFP-SH2-DRN	Plastic	2"	6



1

Cut inner and outer sleeve as needed



2

Lock outer sleeve in place



3

Install Aerator Adapter Box "inverted"



4

Nail to form deck



5

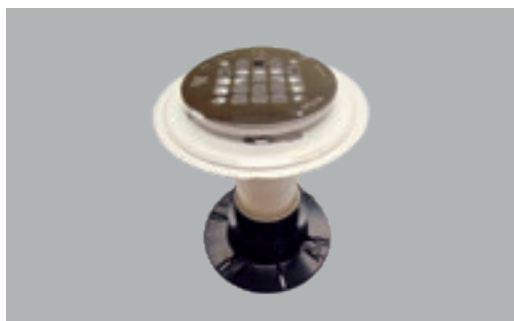
Pour concrete to top of Aerator Adapter Box



6

Install assembled shower pan or shower stall & shower drain with piping

## HoldRite® HydroFlame™ Custom Built Shower Drain Sleeves



- UL Listed firestop device
- Built-in fire protection
- Provides a fast and strong drain support
- For use with 2" PVC drains (drain body and riser pipe not included)
- Glue 2" PVC pipe into bottom of sleeve base

Type	UL Rating	Status
Fire	F	✓

Model #	Pipe Type(s)	Pipe O.D.	Nominal Pipe Size
PS-SD-0200	PVC, ccPVC & ABS	2.375"	2"



## HoldRite® HydroFlame™ Pro Series Cast Iron Drain Sleeves

- UL Listed firestop device
- For no-hub cast iron drains and piping
- Mount drain body on top of sleeve and secure to deck
- For cast-in-place drains (Drain Not Included)
- For Neo-Lock style drain outlets
- Extensions available

Type	UL Rating	Status
Fire	F	✓

Model Number	Penetrating Pipe Type	Nominal Penetrant Size	Box Qty
HFP-2CI-DRN	Hubless Cast Iron	2"	10
HFP-23CI-DRN	Hubless Cast Iron	2" - 3"	10
HFP-34CI-DRN	Hubless Cast Iron	3" - 4"	10
HFP-6CI-DRN	Hubless Cast Iron	6"	2



1

Adjust sleeve to desired height



2

Secure sleeve to form deck  
(shown with extension)



3

Set drain on top of sleeve



4

Pour concrete

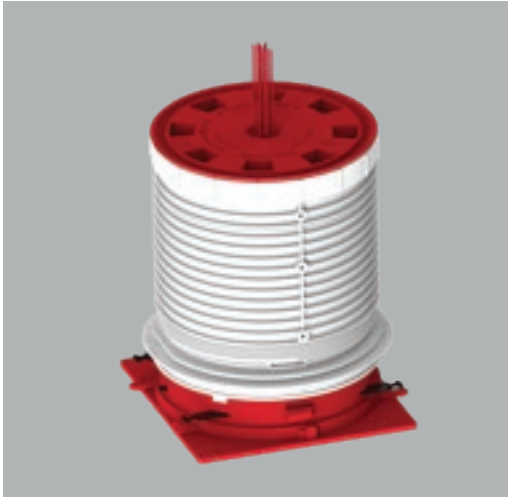
## HoldRite® HydroFlame™ Custom Built Floor Drain Kit



- Mid-body seal provides water-tight penetration
- UL Listed firestop device
- Simple and strong drain support stand during concrete pour
- Available for 2", 3", and 4" Neo-lock style cast iron drain bodies (drain not included)

Type	UL Rating	Status
Water	W	✓
Smoke / Gas	L	✓
Fire	F	✓

Model #	Penetrating Pipe Type(s)	Pipe O.D.	Nominal Penetrant Size
HM-DK-0200	Cast Iron	N/A	2"
HM-DK-0300	Cast Iron	N/A	3"
HM-DK-0400	Cast Iron	N/A	4"



## HoldRite® HydroFlame™ Pro Series Cable & Line-Set Sleeves

- UL Listed firestop device – 2-3 hour F-Rating
- Accepts multiple data, phone, electrical cables, fiber cables, coax, refrigeration line-sets
- Accepts cable fill up to 45%
- Accepts multiple tubing-water lines, etc.
- Some models are height adjustable
- Extensions also available

Type	UL Rating	Status
Water	W**	✓
Smoke / Gas	L	✓
Fire	F	✓
Thermal	T*	✓

\*T-Rating when penetrant is non-metallic

\*\*W-Rated when used with silicone sealant

Model Number	Penetrating Pipe Type	Nominal Penetrant Size	Box Qty
HFP-CSM2	Cables	45% fill max	10
HFP-CSM3	Cables	45% fill max	10
HFP-CSM2B	Cables	45% fill max	10
HFP-CSM3B	Cables	45% fill max	10
HFP-LSP3	Line-sets and multiple pipes	Various, including insulation	10
HFP-LSP3B	Line-sets and multiple pipes	Various, including insulation	10



1

Adjust sleeve to desired height



2

Secure sleeve to form deck,  
with cap installed



3

Pour concrete



4

Remove safety cap



5

Insert cable(s)



6

Install mineral wool & caulk





## HoldRite® HydroFlame™ Pro Series Closet Flange Sleeves

- UL Listed firestop device – 3 hour F-Rating
- Models for 3" or 4" toilet flanges (Flanges Not Included)
- For both plastic and no-hub cast iron drain piping
- Mid-body seal provides water-tight penetration
- Adjustable height sleeve up to 12"
- Extensions are available for slabs over 12"

Type	UL Rating	Status
Water	W**	✓
Smoke / Gas	L	✓
Fire	F	✓
Thermal	T*	✓



OPS-PL40-0300  
(Closet Flange Not Included)

\*T-Rating when penetrant is non-metallic  
\*\*W-Rated - refer to UL System data for specific sizing requirements

Model Number	Penetrating Pipe Type	Nominal Penetrant Size	Box Qty
HFP-CF3PL	Plastic or Cast Iron	3"	10
HFP-CF4PL	Plastic or Cast Iron	3" - 4"	10
HFP-CF3NH	Cast Iron	3"	10
HFP-CF4NH	Cast Iron	3" - 4"	10
OPS-PL40-0300	4" x 3" Plastic Closet Flange	3"	N/A



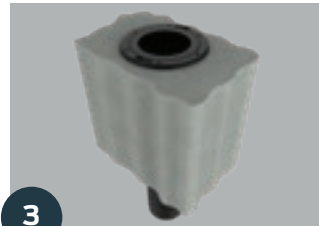
1

Remove cap with Safety Cap Tool or break out with hammer



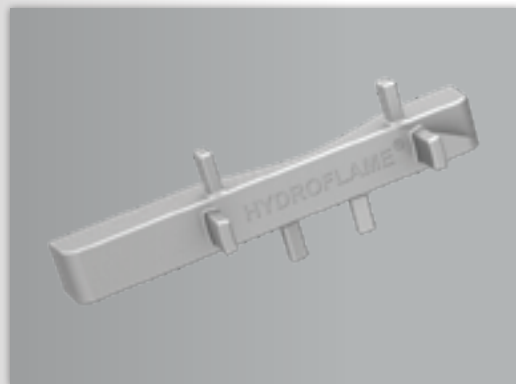
2

Insert plastic or cast iron Closet Flange and pipe



3

Attach Closet Flange to floor



## HoldRite® HydroFlame™ Pro Series Safety Cap Tool

- Easy to use forged steel, nickel plated, hand tool
- For removal of HoldRite HydroFlame Pro Series Safety Caps
- Multi-purpose wrench works with all sizes of the HoldRite HydroFlame Pro Series Safety Caps
- Use manually, or strike with a hammer



Model Number	Qty
HFPT For removal of all size safety caps (1" - 6")	1



A construction site showing a network of red and grey conduits laid out on a wooden formwork floor. Several white, custom-built firestop sleeves are visible, some with red caps. In the background, construction workers in safety gear are working on the structure.

## Custom Built Firestop Solutions – Set It & Forget It!

HydroFlame Custom Built Firestop Solutions meet and exceed building code requirements and provide an engineered technology that is UL Listed to deliver the ultimate cast-in-place water, smoke, and firestop performance. From our Nashville, Tennessee manufacturing facility we are able to manufacture and ship custom sleeves for your building project. These solutions are ideal for projects with thick slabs or contractors who want precise results. HydroFlame Custom Built Solutions allows the contractor to simply set the sleeve for an easy installation. Please note, since HydroFlame is custom crafted to your specifications it requires five or more days to be produced, plus shipping time.

For **custom orders** contact customer support at 1-800-321-0316



## CUSTOM BUILT FIRESTOP SYSTEMS

### Flat Form Deck Sleeve Product Configuration\*

#### Safety Cap

Meets OSHA  
loading requirements  
for hole covers

#### Custom Built

#### Sleeve Riser

Unlimited height for 1/2" - 6"  
penetrants, built to your  
specified height

#### Patented Mid-Body Seal

Internal and external  
waterproofing  
- UL W-Rated



#### Intumescent Wrap Strip

Built-in firestop

#### Nail-In Base

Fast and easy installation  
with break-away ears on most  
models, for tight nesting

\*Comes pre-assembled to your specified height



## Custom Built

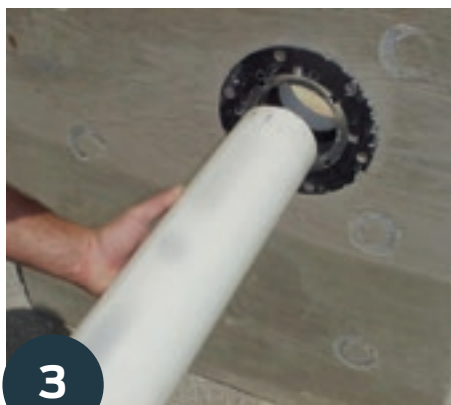
Set it & forget it



1



2



3

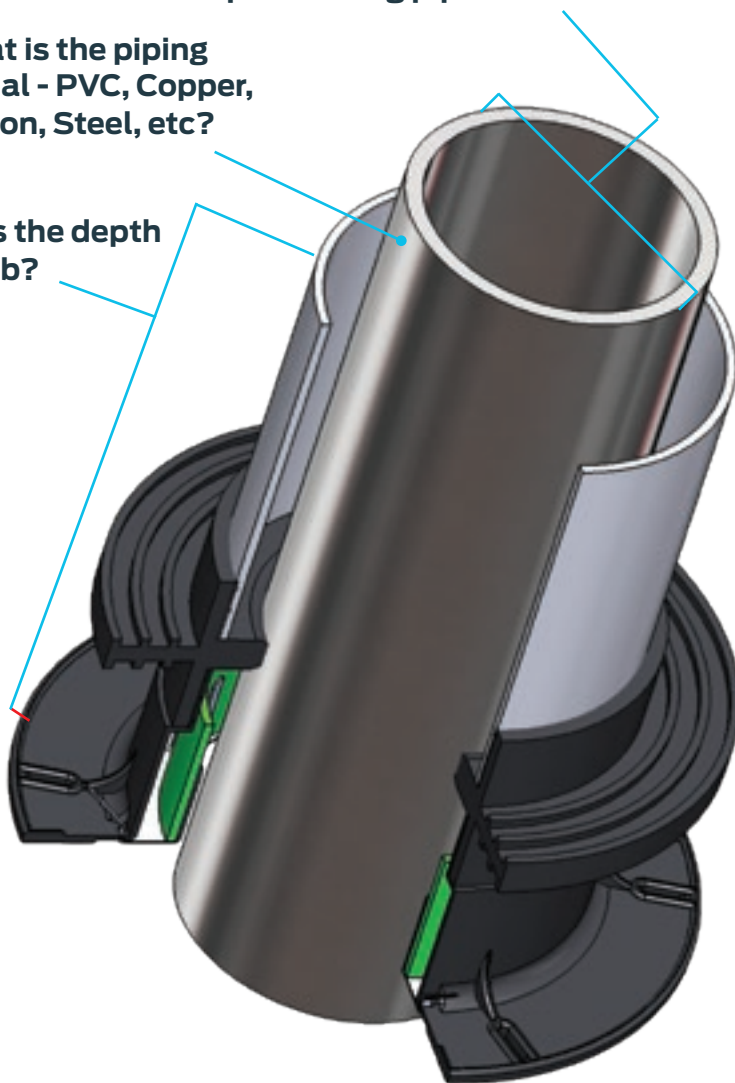
**HoldRite® HydroFlame™ Custom Built** is also easy to order. Provide the following key information:

1. What is the penetrating pipe size?

2. What is the piping material - PVC, Copper, Cast Iron, Steel, etc?

3. What is the depth of the slab?

**YOU'RE DONE!**

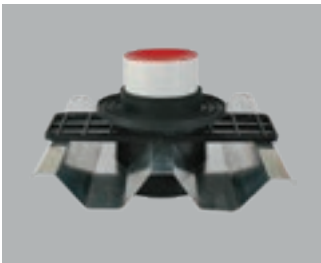


## Easy Installation

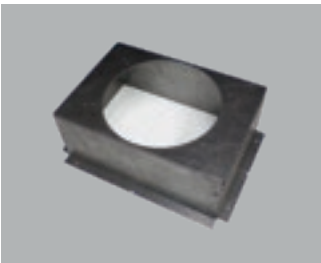
# HoldRite® HydroFlame™ Custom Built Product & Services Directory



**Flat Form Deck Sleeves**  
Page 52, 53



**Corrugated Metal Deck Sleeves**  
Page 54, 55



**Aerator Adaptor Box**  
Page 56



**Tub Box**  
Page 56



**Closet Flange Sleeves**  
(Flange Not Included)  
Page 56



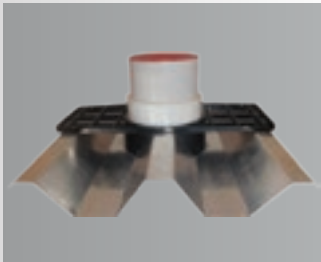
**Shower Drain Sleeves**  
(Drain Not Included)  
Page 57



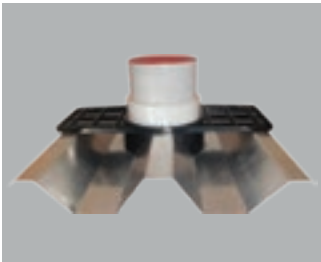
**Floor Drain Kit**  
(Drain Not Included)  
Page 57



**Cable and Line Set Sleeves**  
Page 57



**Corrugated Deck Optional Pipe Size Concrete Sleeves**  
Page 58



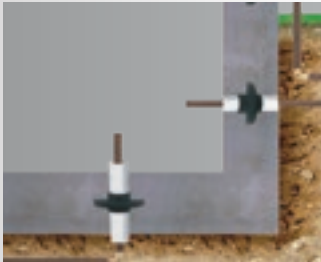
**Corrugated Deck Concrete Sleeves (Sleeve Only-No Water Seal)**  
Page 58



**Flat Form Deck Optional Pipe Size Sleeves**  
Page 59



**Wood Deck Concrete Sleeves (Sleeve Only, No Water Seal)**  
Page 59



**Slab & Wall Seal Sleeves**  
Page 60, 61



**Specifications**  
Page 63



**VIP No Charge Services**  
Page 69



**Index**  
Page 75-85



## HoldRite® HydroFlame™ Custom Built Flat Form Deck Sleeves

- Mid-body seal provides watertight penetration – UL W-Rated
- UL Listed firestop device (2 or 3-hour F-ratings)
- Built-in water, fire, smoke and gas protection
- Custom cut to your specified height at no extra cost
- Turn-key installation - no job site modifications required
- Includes OSHA compliant safety cap/hole cover
- Allows for expansion, contraction and movement
- Available 4½" and taller for ½"-6" piping penetrants
- Reduces piping system noise transfer by maintaining annular spacing

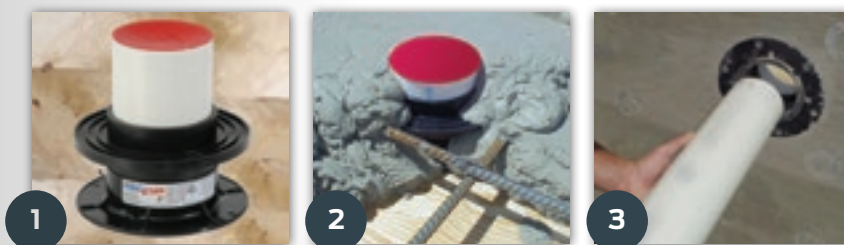
Model #	Penetrating Pipe Type(s)	Pipe O.D.	Nominal Penetrant Size
PS-NP-0050	PVC, ccPVC, RNC & ABS	.840"	½"
PS-NP-0075	PVC, ccPVC, RNC & ABS	1.050"	¾"
PS-NP-0100	PVC, ccPVC, RNC & ABS	1.315"	1"
PS-NP-0125	PVC, ccPVC, RNC & ABS	1.660"	1¼"
PS-NP-0150	PVC, ccPVC, RNC & ABS	1.900"	1½"
PS-NP-0200	PVC, ccPVC, RNC & ABS	2.375"	2"
PS-NP-0250	PVC, ccPVC, RNC & ABS	2.875"	2½"
PS-NP-0300	PVC, ccPVC, RNC & ABS	3.50"	3"
PS-NP-0400	PVC, ccPVC, RNC & ABS	4.5"	4"
PS-NP-0600	PVC, ccPVC, RNC & ABS	6.625"	6"
PS-CP-0050	CPVC:(Flowguard Gold SDR 11, SDR 11) & PEX	.625"	½"
PS-CP-0075	CPVC:(Flowguard Gold SDR 11, SDR 11) & PEX	0.875"	¾"
PS-CP-0100	CPVC:(Flowguard Gold SDR 11, SDR 11) & PEX	1.125"	1"
PS-CP-0125	CPVC:(Flowguard Gold SDR 11, SDR 11) & PEX	1.375"	1¼"
PS-CP-0150	CPVC:(Flowguard Gold SDR 11, SDR 11) & PEX	1.625"	1½"
PS-CP-0200	CPVC:(Flowguard Gold SDR 11, SDR 11) & PEX	2.125"	2"
PS-CN-0050	CPVC:(Corzan, Blazemaster 13.5, SDR 13.5, Sch. 40 & 80)	.840"	½"
PS-CN-0075	CPVC:(Corzan, Blazemaster 13.5, SDR 13.5, Sch. 40 & 80)	1.050"	¾"
PS-CN-0100	CPVC:(Corzan, Blazemaster 13.5, SDR 13.5, Sch. 40 & 80)	1.315"	1"
PS-CN-0125	CPVC:(Corzan, Blazemaster 13.5, SDR 13.5, Sch. 40 & 80)	1.660"	1¼"
PS-CN-0150	CPVC:(Corzan, Blazemaster 13.5, SDR 13.5, Sch. 40 & 80)	1.900"	1½"
PS-CN-0200	CPVC:(Corzan, Blazemaster 13.5, SDR 13.5, Sch. 40 & 80)	2.375"	2"
PS-CN-0250	CPVC:(Corzan, Blazemaster 13.5, SDR 13.5, Sch. 40 & 80)	2.875"	2½"
PS-CN-0300	CPVC:(Corzan, Blazemaster 13.5, SDR 13.5, Sch. 40 & 80)	3.50"	3"
PS-CN-0400	CPVC:(Corzan, Blazemaster 13.5, SDR 13.5, Sch. 40 & 80)	4.5"	4"
PS-CN-0600	CPVC:(Corzan, Blazemaster 13.5, SDR 13.5, Sch. 40 & 80)	6.625"	6"
PS-CT-0050	Copper	.625"	½"
PS-CT-0075	Copper	0.875"	¾"
PS-CT-0100	Copper	1.125"	1"
PS-CT-0125	Copper	1.375"	1¼"
PS-CT-0150	Copper	1.625"	1½"
PS-CT-0200	Copper	2.125"	2"
PS-CT-0250	Copper	2.625"	2½"
PS-CT-0300	Copper	3.125"	3"
PS-CT-0400	Copper	4.125"	4"
PS-CT-0600	Copper	6.125"	6"

## HoldRite® HydroFlame™ Custom Built Flat Form Deck Sleeves

Model #	Penetrating Pipe Type(s)	Pipe O.D.	Nominal Penetrant Size
PS-CH-0200	Cast Iron - Extra Heavy	2.38"	2"
PS-CH-0300	Cast Iron - Extra Heavy	3.50"	3"
PS-CH-0400	Cast Iron - Extra Heavy	4.50"	4"
PS-CI-0150	Cast Iron - Service Weight	1.90"	1½"
PS-CI-0200	Cast Iron - Service Weight	2.30"	2"
PS-CI-0300	Cast Iron - Service Weight	3.30"	3"
PS-CI-0400	Cast Iron - Service Weight	4.30"	4"
PS-CI-0600	Cast Iron - Service Weight	6.30"	6"
PS-CX-0150	Cast Iron - Hubless	1.90"	1½"
PS-CX-0200	Cast Iron - Hubless	2.35"	2"
PS-CX-0300	Cast Iron - Hubless	3.35"	3"
PS-CX-0400	Cast Iron - Hubless	4.38"	4"
PS-CX-0500	Cast Iron - Hubless	5.30"	5"
PS-CX-0600	Cast Iron - Hubless	6.30"	6"
PS-ST-0050	Steel	.840"	½"
PS-ST-0075	Steel	1.050"	¾"
PS-ST-0100	Steel	1.315"	1"
PS-ST-0125	Steel	1.660"	1¼"
PS-ST-0150	Steel	1.900"	1½"
PS-ST-0200	Steel	2.375"	2"
PS-ST-0250	Steel	2.875"	2½"
PS-ST-0300	Steel	3.50"	3"
PS-ST-0400	Steel	4.5"	4"
PS-ST-0600	Steel	6.625"	6"
PS-ET-0050	EMT	0.706"	½"
PS-ET-0075	EMT	0.922"	¾"
PS-ET-0100	EMT	1.163"	1"
PS-ET-0125	EMT	1.51"	1¼"
PS-ET-0150	EMT	1.74"	1½"
PS-ET-0200	EMT	2.197"	2"
PS-ET-0250	EMT	2.875"	2½"
PS-ET-0300	EMT	3.5"	3"
PS-ET-0400	EMT	4.5"	4"

Suffix - "W" added to the model number provides for a 2" high water dam.

### 3-Step Easy Installation



Type	UL Rating	Status
Water	W	✓
Smoke / Gas	L	✓
Fire	F	✓
Thermal	T*	✓

\*T-rating when penetrant is non-metallic





**CUSTOM BUILT**

## HoldRite® HydroFlame™ Custom Built Corrugated Metal Form Deck Sleeves

- Mid-body seal provides watertight penetration – UL W-Rated
- UL Listed firestop device
- One-piece construction - no parts, pieces or field modifications necessary
- Built-in water, fire, smoke and gas protection
- Custom cut to your specified height at no extra cost
- Includes OSHA compliant safety cap/hole cover
- Allows for expansion, contraction and movement
- Available 2½" and taller for ½"-6" piping

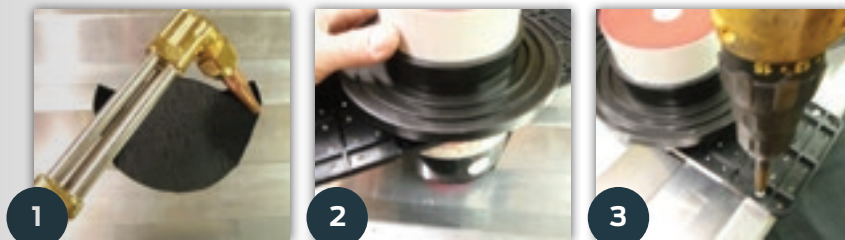
Model #	Penetrating Pipe Type(s)	Pipe O.D.	Nominal Penetrant Size
CD-NP-0050	PVC, ccPVC, RNC & ABS	.840"	½"
CD-NP-0075	PVC, ccPVC, RNC & ABS	1.050"	¾"
CD-NP-0100	PVC, ccPVC, RNC & ABS	1.315"	1"
CD-NP-0125	PVC, ccPVC, RNC & ABS	1.660"	1¼"
CD-NP-0150	PVC, ccPVC, RNC & ABS	1.900"	1½"
CD-NP-0200	PVC, ccPVC, RNC & ABS	2.375"	2"
CD-NP-0250	PVC, ccPVC, RNC & ABS	2.875"	2½"
CD-NP-0300	PVC, ccPVC, RNC & ABS	3.50"	3"
CD-NP-0400	PVC, ccPVC, RNC & ABS	4.5"	4"
CD-NP-0600	PVC, ccPVC, RNC & ABS	6.625"	6"
CD-CP-0050	CPVC:(Flowguard Gold SDR 11, SDR 11) & PEX	.625"	½"
CD-CP-0075	CPVC:(Flowguard Gold SDR 11, SDR 11) & PEX	0.875"	¾"
CD-CP-0100	CPVC:(Flowguard Gold SDR 11, SDR 11) & PEX	1.125"	1"
CD-CP-0125	CPVC:(Flowguard Gold SDR 11, SDR 11) & PEX	1.375"	1¼"
CD-CP-0150	CPVC:(Flowguard Gold SDR 11, SDR 11) & PEX	1.625"	1½"
CD-CP-0200	CPVC:(Flowguard Gold SDR 11, SDR 11) & PEX	2.125"	2"
CD-CN-0050	CPVC:(Corzan, Blazemaster 13.5, SDR 13.5, Sch. 40 & 80)	.840"	½"
CD-CN-0075	CPVC:(Corzan, Blazemaster 13.5, SDR 13.5, Sch. 40 & 80)	1.050"	¾"
CD-CN-0100	CPVC:(Corzan, Blazemaster 13.5, SDR 13.5, Sch. 40 & 80)	1.315"	1"
CD-CN-0125	CPVC:(Corzan, Blazemaster 13.5, SDR 13.5, Sch. 40 & 80)	1.660"	1¼"
CD-CN-0150	CPVC:(Corzan, Blazemaster 13.5, SDR 13.5, Sch. 40 & 80)	1.900"	1½"
CD-CN-0200	CPVC:(Corzan, Blazemaster 13.5, SDR 13.5, Sch. 40 & 80)	2.375"	2"
CD-CN-0250	CPVC:(Corzan, Blazemaster 13.5, SDR 13.5, Sch. 40 & 80)	2.875"	2½"
CD-CN-0300	CPVC:(Corzan, Blazemaster 13.5, SDR 13.5, Sch. 40 & 80)	3.50"	3"
CD-CN-0400	CPVC:(Corzan, Blazemaster 13.5, SDR 13.5, Sch. 40 & 80)	4.5"	4"
CD-CN-0600	CPVC:(Corzan, Blazemaster 13.5, SDR 13.5, Sch. 40 & 80)	6.625"	6"
CD-CT-0050	Copper	.625"	½"
CD-CT-0075	Copper	0.875"	¾"
CD-CT-0100	Copper	1.125"	1"
CD-CT-0125	Copper	1.375"	1¼"
CD-CT-0150	Copper	1.625"	1½"
CD-CT-0200	Copper	2.125"	2"
CD-CT-0250	Copper	2.625"	2½"
CD-CT-0300	Copper	3.125"	3"
CD-CT-0400	Copper	4.125"	4"
CD-CT-0600	Copper	6.125"	6"

## HoldRite® HydroFlame™ Custom Built Corrugated Metal Form Deck Sleeves

Model #	Penetrating Pipe Type(s)	Pipe O.D.	Nominal Penetrant Size
CD-CH-0200	Cast Iron - Extra Heavy	2.38"	2"
CD-CH-0300	Cast Iron - Extra Heavy	3.50"	3"
CD-CH-0400	Cast Iron - Extra Heavy	4.50"	4"
CD-CI-0150	Cast Iron - Service Weight	1.90"	1½"
CD-CI-0200	Cast Iron - Service Weight	2.30"	2"
CD-CI-0300	Cast Iron - Service Weight	3.30"	3"
CD-CI-0400	Cast Iron - Service Weight	4.30"	4"
CD-CI-0600	Cast Iron - Service Weight	6.30"	6"
CD-CX-0150	Cast Iron - Hubless	1.90"	1½"
CD-CX-0200	Cast Iron - Hubless	2.35"	2"
CD-CX-0300	Cast Iron - Hubless	3.35"	3"
CD-CX-0400	Cast Iron - Hubless	4.38"	4"
CD-CX-0500	Cast Iron - Hubless	5.30"	5"
CD-CX-0600	Cast Iron - Hubless	6.30"	6"
CD-ST-0050	Steel	.840"	½"
CD-ST-0075	Steel	1.050"	¾"
CD-ST-0100	Steel	1.315"	1"
CD-ST-0125	Steel	1.660"	1¼"
CD-ST-0150	Steel	1.900"	1½"
CD-ST-0200	Steel	2.375"	2"
CD-ST-0250	Steel	2.875"	2½"
CD-ST-0300	Steel	3.50"	3"
CD-ST-0400	Steel	4.5"	4"
CD-ST-0600	Steel	6.625"	6"
CD-ET-0050	EMT	0.706"	½"
CD-ET-0075	EMT	0.922"	¾"
CD-ET-0100	EMT	1.163"	1"
CD-ET-0125	EMT	1.51"	1¼"
CD-ET-0150	EMT	1.74"	1½"
CD-ET-0200	EMT	2.197"	2"
CD-ET-0250	EMT	2.875"	2½"
CD-ET-0300	EMT	3.5"	3"
CD-ET-0400	EMT	4.5"	4"

Suffix - "W" added to the model number provides for a 2" high water dam.

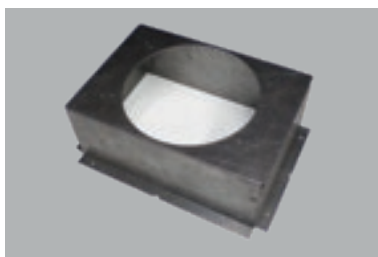
### 3-Step Easy Installation



Type	UL Rating	Status
Water	W	✓
Smoke / Gas	L	✓
Fire	F	✓
Thermal	T*	✓

\*T-rating when penetrant is non-metallic

## HoldRite® HydroFlame™ Custom Built Aerator Adapter Box



- Provides a recess in under side of slab for fitting access
- Accepts 3", 4" and 6" HydroFlame sleeves
- 3½" tall box
- For 8" or thicker concrete floors
- Ideal for Sovent® and other high and tight fitting joint access

Model #	Pipe Type(s)	Nominal Penetrant Size
AA-0304	PVC, ABS, No-Hub Cast Iron	3" or 4"
AA-06	PVC, ABS, No-Hub Cast Iron	6"

## HoldRite® HydroFlame™ Custom Built Tub Box



- Provides for a watertight slab penetration
- UL Listed firestop device
- Built-in water, fire, smoke and gas protection
- Strong and simple installation - no need for fire caulking or mineral wool
- Device accepts PVC, ABS and brass drain pipes using the appropriate seal plug provided
- Allows for expansion, contraction and movement

**CUSTOM BUILT**

Model #	Penetrating Pipe Type(s)	Pipe O.D.	Nominal Penetrant Size
TB-NP-0200	Sch.40 Bath Drains	1.9"	1½"
TB-TW-0200	Thin Wall & Brass Bath Drains	1.5"	1½"

\*Add (-4) for 4" Styrofoam foam pad.

## HoldRite® HydroFlame™ Custom Built Closet Flange Sleeves



- Mid-body seal provides watertight penetration
- UL Listed firestop device
- Strong and simple installation for 3" and 4" flanges (closet flange not included)
- Device accepts PVC, ABS or no-hub closet flanges
- Built-in water, fire, smoke and gas protection
- Specify closet flange type when ordering

**CUSTOM BUILT**

Model #	Penetrating Pipe Type(s)	Pipe O.D.	Nominal Penetrant Size
PS-NPCF-0300	PVC, ccPVC & ABS	3.5"	3"
PS-NPCF-0400	PVC, ccPVC & ABS	4.5"	4"
PS-CICF-0300	Cast Iron - Service Weight	3.30"	3"
PS-CICF-0400	Cast Iron - Service Weight	4.30"	4"
PS-CXCF-0300	Cast Iron - Hubless	3.35"	3"
PS-CXCF-0400	Cast Iron - Hubless	4.38"	4"
OPS-PL40-0300	*PVC 4x3 Closet Flange	3.5"	3"

\*Sleeve is made with 4" schedule 40 PVC to accept a 4x3 closet flange glued to riser.

## HoldRite® HydroFlame™ Custom Built Shower Drain Sleeves



- UL Listed firestop device
- Built-in fire protection
- Provides a fast and strong drain support
- For use with 2" PVC drains (drain body and riser pipe not included)
- Glue 2" PVC pipe into bottom of sleeve base

Model #	Pipe Type(s)	Pipe O.D.	Nominal Pipe Size
PS-SD-0200	PVC, ccPVC & ABS	2.375"	2"

## HoldRite® HydroFlame™ Custom Built Floor Drain Kit



- Mid-body seal provides watertight penetration
- UL Listed firestop device
- Simple and strong drain support stand during concrete pour
- Available for 2", 3", and 4" Neo-lock style cast iron drain bodies (drain not included)

Model #	Penetrating Pipe Type(s)	Pipe O.D.	Nominal Penetrant Size
HM-DK-0200	Cast Iron	N/A	2"
HM-DK-0300	Cast Iron	N/A	3"
HM-DK-0400	Cast Iron	N/A	4"

## HoldRite® HydroFlame™ Custom Built Cable & "Line Set" Sleeves



- UL Listed firestop device
- Device accepts multiple data, phone, electrical, fiber cables and refrigeration line sets
- Custom cut to your specified height at no extra cost
- Includes OSHA compliant safety cap/hole cover

Model #	Penetrating Pipe Type(s)	Pipe O.D.	Nominal Penetrant Size
PS-LS-0300	Line Sets	3.75"	Up to 3"
PS-CS-0200	Cable(s)	2.625"	Up to 2"
PS-CS-0300	Cable(s)	3.75"	Up to 3"

Suffix - "W" added to the model number provides for a water dam.



## HoldRite® HydroFlame™ Custom Built

### Corrugated Deck Optional Pipe Size Concrete Sleeves



- UL Listed firestop device
- Built-in fire protection
- Custom cut to your specified height at no extra cost
- Each sleeve accepts a range of pipe sizes between ½" and 6": ½"-1", 1¼"-2", 2½"-3", 3"-4", or 5"-6"
- Includes OSHA compliant safety cap/hole cover
- Allows for movement and off-center piping
- Reduced time to dry floors and finish building
- Water-Resistant Mid-Body Seal

Model #	Penetrating Pipe Type(s)	Nominal Penetrant Size
CD-OPS-PL-0100	½ to 1 Inch Plastic and Metal Pipes	½" - 1"
CD-OPS-PL-0200	1¼ to 2 Inch Plastic and Metal Pipes	1¼" - 2"
CD-OPS-PL-0300	2½ to 3 Inch Plastic and Metal Pipes	2" - 3"
CD-OPS-PL-0400	3 to 4 Inch Plastic and Metal Pipes	3" - 4"
CD-OPS-PL-0600	5 to 6 Inch Plastic and Metal Pipes	5" - 6"
CD-OPS-MT-0100	½ to 1 Inch Metal Pipes	½" - 1"
CD-OPS-MT-0200	1¼ to 2 Inch Metal Pipes	1¼" - 2"
CD-OPS-MT-0300	2½ to 3 Inch Metal Pipes	2" - 3"
CD-OPS-MT-0400	4 Inch Metal Pipes	3" - 4"
CD-OPS-MT-0600	5 to 6 Inch Metal Pipes	5" - 6"

Suffix - "W" added to the model number provides for a water dam.

## HoldRite® HydroFlame™ Custom Built

### Corrugated Deck Concrete Sleeves (Sleeve Only - No Water Seal)



- Fast, simple concrete sleeve for corrugated decks
- Custom cut to your specified height at no extra cost
- Includes OSHA compliant safety cap/hole cover
- 1¼" - 8" sleeves available
- No field assembly required
- UL Listed sleeve (firestopping by others)

Model #	Penetrating Pipe Type(s)	Hollow Sleeve I.D.	Nominal Sleeve Riser Size
CD-0125	¼"-¾" - All types	1.53"	1¼"
CD-0200	¼"-1¼" - All types	2.19"	2"
CD-0300	1"-2" - All types	3.33"	3"
CD-0400	1¼"-3" - All types	4.28"	4"
CD-0500	2½"-4" - All types	5.22"	5"
CD-0600	3"-5" - All types	6.22"	6"
CD-0800	4"-6" - All types	8.21"	8"

Suffix - "W" added to the model number provides for a water dam.

## HoldRite® HydroFlame™ Custom Built

### Flat Form Deck Optional Pipe Size Sleeves



- UL Listed firestop device
- Interior mid-body seal provides water resistant penetration
- Built-in fire protection
- Custom cut to your specified height at no extra cost
- Each sleeve accepts a range of pipe sizes between 1/2" and 6": 1/2"-1", 1 1/4"-2", 2 1/2"-3", 3"-4" or 5"-6"
- Includes OSHA compliant safety cap/hole cover
- Allows for movement and off-center piping
- Reduced time to dry floors and finish building

Model #	Penetrating Pipe Type(s)	Pipe O.D.	Nominal Penetrant Size
OPS-PL-0100	1/2 to 1 Inch Plastic and Metal Pipes	.625"-1.5"	1/2"-1"
OPS-PL-0200	1 1/4 to 2 Inch Plastic and Metal Pipes	1.375"-2.5"	1-1/4"-2"
OPS-PL-0300	2 1/2 to 3 Inch Plastic and Metal Pipes	2.625"-3.5"	2"-3"
OPS-PL40-0300	*Glue in a 4x3 PVC Closet Flange	3.5"	3"
OPS-PL-0400	3 - 4 Inch Plastic Plastic and Metal Pipes	3.125"-4.5"	3"-4"
OPS-PL-0600	5 to 6 Inch Plastic Plastic and Metal Pipes	5.125"-6.625"	5"-6"
OPS-MT-0100	1/2 to 1 Inch Metal Pipes	.625"-1.5"	1/2"-1"
OPS-MT-0200	1 1/4 to 2 Inch Metal Pipes	1.375"-2.5"	1-1/4"-2"
OPS-MT-0300	2 1/2 to 3 Inch Metal Pipes	2.625"-3.5"	2"-3"
OPS-MT-0400	4 Inch Metal Pipes	4.125"-4.5"	3"-4"
OPS-MT-0600	5 to 6 Inch Metal Pipes	5.125"-6.625"	5"-6"

Suffix - "W" added to the model number provides for a water dam.

\*Sleeve is made with 4" schedule 40 PVC to accept a 4x3 closet flange glued to riser.

## HoldRite® HydroFlame™ Custom Built

### Wood Deck Concrete Sleeves (Sleeve Only - No Water Seal)



- Fast, simple concrete sleeve for flat form decks
- Custom cut to your specified height at no extra cost
- Includes OSHA compliant safety cap/hole cover
- 1 1/4" - 8" sleeves available
- No field assembly required
- UL Listed sleeve (firestopping by others)

Model #	Penetrating Pipe Type(s)	Hollow Sleeve I.D.	Nominal Sleeve Riser Size
WD-0125	1/4"-3/4" - All types	1.53"	1 1/4"
WD-0200	1/4" - 1 1/4" - All types	2.19"	2"
WD-0300	1"-2" - All types	3.33"	3"
WD-0400	1 1/4"-3" - All types	4.28"	4"
WD-0500	2 1/2"-4" - All types	5.22"	5"
WD-0600	3"-5" - All types	6.22"	6"
WD-0800	4"-6" - All types	8.21"	8"

Suffix - "W" added to the model number provides for a water dam.

## HoldRite® HydroFlame™ Custom Built Slab & Wall Seal Sleeves



- Mid-body seal provides watertight penetration
- Watertight seal helps protect property against water intrusion, mold, insects/termites, methane and radon gas
- Allows for expansion, contraction and movement
- Available for ½"-6" pipes and conduits
- Custom cut to your specified length (specify length when ordering)
- For use through walls and slab-on-grade conditions, up to 36" deep
- Mid-body seal also available separately
- UL W-Rated protection

Model #	Penetrating Pipe Type(s)	Pipe O.D.	Nominal Penetrant Size
HP-NP-0050	PVC, ccPVC, RNC & ABS	.840"	½"
HP-NP-0075	PVC, ccPVC, RNC & ABS	1.050"	¾"
HP-NP-0100	PVC, ccPVC, RNC & ABS	1.315"	1"
HP-NP-0125	PVC, ccPVC, RNC & ABS	1.660"	1¼"
HP-NP-0150	PVC, ccPVC, RNC & ABS	1.900"	1½"
HP-NP-0200	PVC, ccPVC, RNC & ABS	2.375"	2"
HP-NP-0250	PVC, ccPVC, RNC & ABS	2.875"	2½"
HP-NP-0300	PVC, ccPVC, RNC & ABS	3.50"	3"
HP-NP-0400	PVC, ccPVC, RNC & ABS	4.5"	4"
HP-NP-0600	PVC, ccPVC, RNC & ABS	6.625"	6"
HP-CP-0050	CPVC:(Flowguard Gold SDR 11, SDR 11) & PEX	.625"	½"
HP-CP-0075	CPVC:(Flowguard Gold SDR 11, SDR 11) & PEX	0.875"	¾"
HP-CP-0100	CPVC:(Flowguard Gold SDR 11, SDR 11) & PEX	1.125"	1"
HP-CP-0125	CPVC:(Flowguard Gold SDR 11, SDR 11) & PEX	1.375"	1¼"
HP-CP-0150	CPVC:(Flowguard Gold SDR 11, SDR 11) & PEX	1.625"	1½"
HP-CP-0200	CPVC:(Flowguard Gold SDR 11, SDR 11) & PEX	2.125"	2"
HP-CN-0050	CPVC:(Corzan, Blazemaster 13.5, SDR 13.5, Sch. 40 & 80)	.840"	½"
HP-CN-0075	CPVC:(Corzan, Blazemaster 13.5, SDR 13.5, Sch. 40 & 80)	1.050"	¾"
HP-CN-0100	CPVC:(Corzan, Blazemaster 13.5, SDR 13.5, Sch. 40 & 80)	1.315"	1"
HP-CN-0125	CPVC:(Corzan, Blazemaster 13.5, SDR 13.5, Sch. 40 & 80)	1.660"	1¼"
HP-CN-0150	CPVC:(Corzan, Blazemaster 13.5, SDR 13.5, Sch. 40 & 80)	1.900"	1½"
HP-CN-0200	CPVC:(Corzan, Blazemaster 13.5, SDR 13.5, Sch. 40 & 80)	2.375"	2"
HP-CN-0250	CPVC:(Corzan, Blazemaster 13.5, SDR 13.5, Sch. 40 & 80)	2.875"	2½"
HP-CN-0300	CPVC:(Corzan, Blazemaster 13.5, SDR 13.5, Sch. 40 & 80)	3.50"	3"
HP-CN-0400	CPVC:(Corzan, Blazemaster 13.5, SDR 13.5, Sch. 40 & 80)	4.5"	4"
HP-CN-0600	CPVC:(Corzan, Blazemaster 13.5, SDR 13.5, Sch. 40 & 80)	6.625"	6"
HP-CT-0050	Copper	.625"	½"
HP-CT-0075	Copper	0.875"	¾"
HP-CT-0100	Copper	1.125"	1"
HP-CT-0125	Copper	1.375"	1¼"
HP-CT-0150	Copper	1.625"	1½"
HP-CT-0200	Copper	2.125"	2"
HP-CT-0250	Copper	2.625"	2½"
HP-CT-0300	Copper	3.125"	3"
HP-CT-0400	Copper	4.125"	4"
HP-CT-0600	Copper	6.125"	6"

## HoldRite® HydroFlame™ Custom Built Slab & Wall Seal Sleeves

Model #	Penetrating Pipe Type(s)	Pipe O.D.	Nominal Penetrant Size
HP-CH-0200	Cast Iron - Extra Heavy	2.38"	2"
HP-CH-0300	Cast Iron - Extra Heavy	3.50"	3"
HP-CH-0400	Cast Iron - Extra Heavy	4.50"	4"
HP-CI-0150	Cast Iron - Service Weight	1.90"	1½"
HP-CI-0200	Cast Iron - Service Weight	2.30"	2"
HP-CI-0300	Cast Iron - Service Weight	3.30"	3"
HP-CI-0400	Cast Iron - Service Weight	4.30"	4"
HP-CI-0600	Cast Iron - Service Weight	6.30"	6"
HP-CX-0150	Cast Iron - Hubless	1.90"	1½"
HP-CX-0200	Cast Iron - Hubless	2.35"	2"
HP-CX-0300	Cast Iron - Hubless	3.35"	3"
HP-CX-0400	Cast Iron - Hubless	4.38"	4"
HP-CX-0500	Cast Iron - Hubless	5.30"	5"
HP-CX-0600	Cast Iron - Hubless	6.30"	6"
HP-ST-0050	Steel	.840"	½"
HP-ST-0075	Steel	1.050"	¾"
HP-ST-0100	Steel	1.315"	1"
HP-ST-0125	Steel	1.660"	1¼"
HP-ST-0150	Steel	1.900"	1½"
HP-ST-0200	Steel	2.375"	2"
HP-ST-0250	Steel	2.875"	2½"
HP-ST-0300	Steel	3.50"	3"
HP-ST-0400	Steel	4.5"	4"
HP-ST-0600	Steel	6.625"	6"
HP-ET-0050	EMT	0.706"	½"
HP-ET-0075	EMT	0.922"	¾"
HP-ET-0100	EMT	1.163"	1"
HP-ET-0125	EMT	1.51"	1¼"
HP-ET-0150	EMT	1.74"	1½"
HP-ET-0200	EMT	2.197"	2"
HP-ET-0250	EMT	2.875"	2½"
HP-ET-0300	EMT	3.5"	3"
HP-ET-0400	EMT	4.5"	4"
Model #	Individual Mid-Body Seals for Pipe Type(s)	Pipe O.D.	Nominal Pipe Size
PS-NPMS-0200	PVC, ABS, IPS, Steel	2.375"	2"
PS-NPMS-0300	PVC, ABS, IPS, Steel	3.50"	3"
PS-NPMS-0400	PVC, ABS, IPS, Steel	4.50"	4"
PS-NPMS-0600	PVC, ABS, IPS, Steel	6.625"	6"





FIRESTOP SLEEVE

PIPE SIZE

Diámetro de tubería, Dimension 1/4"



MIN

MAX

1 1/4"

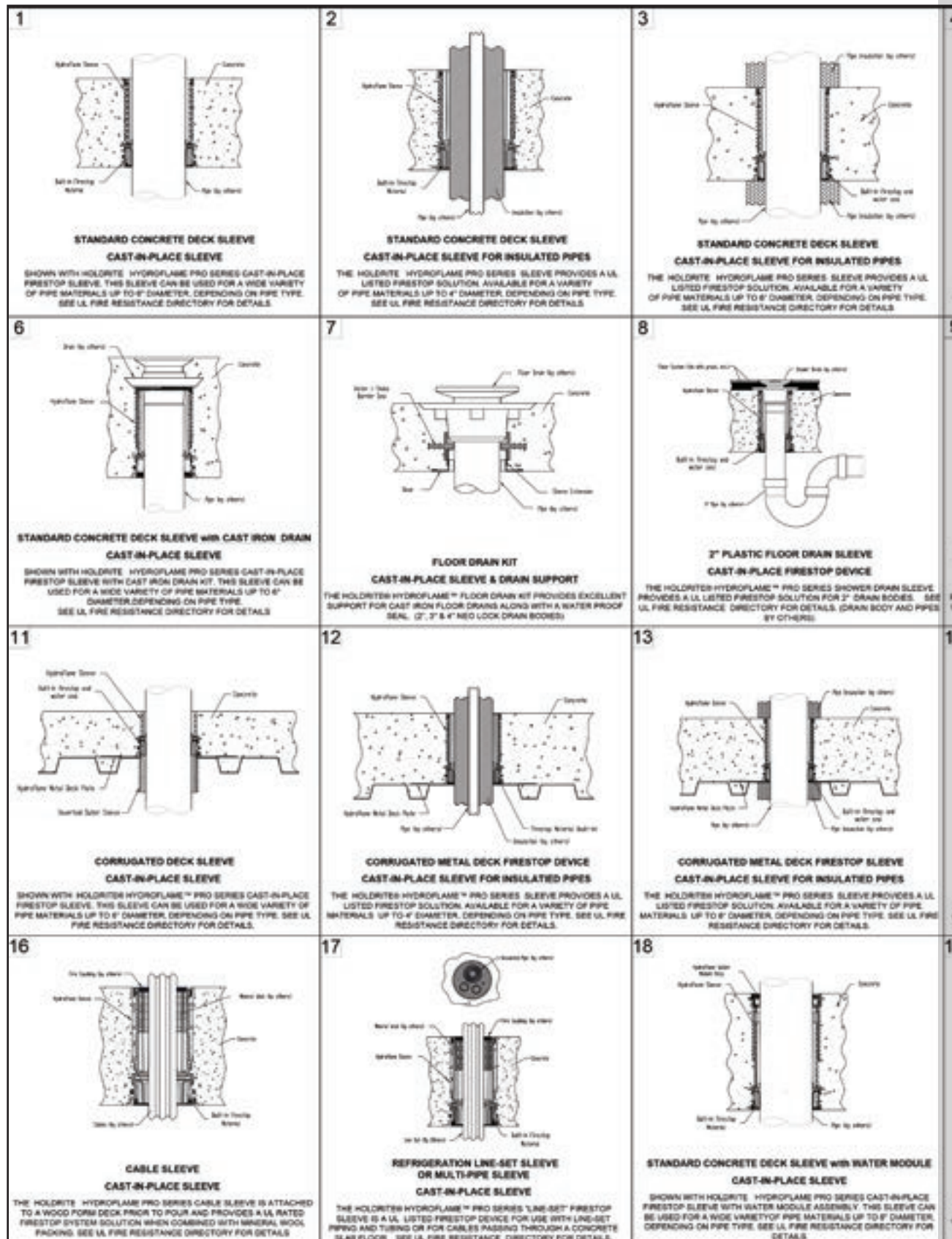
2"

# Specifications & VIP Services



# HoldRite® HydroFlame™ Pro Series

## Installation Details Page



<p>4</p> <p><b>TOILET FLANGE SLEEVE CAST-IN-PLACE SLEEVE</b></p> <p>THE HOLDRITE HYDROFLAME PRO SERIES CAST-IN-PLACE SLEEVE PROVIDES A UL LISTED FIRESTOP SOLUTION FOR 3" OR 4" DRAIN PIPE. GLOSET FLANGE NOT INCLUDED. SEE UL FIRE RESISTANCE DIRECTORY FOR DETAILS.</p>	<p>5</p> <p><b>CONCRETE SLEEVE FOR WOOD FORM DECK (HOLLOW) CAST-IN-PLACE SLEEVE</b></p> <p>THE HOLDRITE HYDROFLAME™ PRO SERIES CAST-IN-PLACE SLEEVE ATTACHES TO A WOOD FORM DECK AND PROVIDES A PATHWAY THROUGH A CONCRETE SLAB FOR PIPE, CONDUIT &amp; CABLES. OSHA COMPLIANT SAFETY CAP INCLUDED. SEE UL FIRE RESISTANCE DIRECTORY FOR DETAILS. FOR 1 1/2"-6" PIPING. (FIRESTOP BY OTHERS)</p>	<p>HOLDRITE SE-TRUT™ PEKITE® LOCKITE™ TESTITE™ QUICKSEAL® HOLDRITE SLICER™ SYSTEM TESTITE® PROGUARD™</p> <p><b>HydroFlame™</b></p> <p>Revision:</p> <p>Contractor:</p> <p>Project:</p> <p>Sheet Title: HoldRite® Installation Details HydroFlame Pro Series</p> <p>Date:</p> <p>Scale: None</p> <p>Drawn:</p> <p>Job #:</p> <p>Sheet B: THIS INSTALLATION IS FOR USE ONLY IN THE US. IT IS NOT TO BE USED IN ANY OTHER COUNTRY. IT IS NOT TO BE USED IN ANY OTHER COUNTRY. IT IS NOT TO BE USED IN ANY OTHER COUNTRY.</p>
<p>9</p> <p><b>RECESSED SHOWER DRAIN 2" SLEEVE (shower pans / stalls) CAST-IN-PLACE FIRESTOP DEVICE</b></p> <p>THE HOLDRITE HYDROFLAME™ PRO SERIES SHOWER DRAIN SLEEVE PROVIDES A UL LISTED FIRESTOP SOLUTION FOR 2" DRAIN BODIES. SEE UL FIRE RESISTANCE DIRECTORY FOR DETAILS. (DRAIN BODY AND PIPES BY OTHERS)</p>	<p>10</p> <p><b>SHOWER DRAIN 2" SLEEVE CAST-IN-PLACE FIRESTOP DEVICE</b></p> <p>THE HOLDRITE HYDROFLAME™ SHOWER DRAIN SLEEVE PROVIDES A UL LISTED FIRESTOP SOLUTION FOR 2" PVC DRAIN BODIES. DRAIN BODY AND PIPES BY OTHERS. SEE UL SYSTEM DRAWINGS FOR DETAILS.</p>	
<p>14</p> <p><b>CONCRETE SLEEVE FOR CORRUGATED METAL DECK (HOLLOW) CORRUGATED CAST-IN-PLACE SLEEVE</b></p> <p>THE HOLDRITE HYDROFLAME™ PRO SERIES SLEEVE PROVIDES A PATHWAY THROUGH A CONCRETE SLAB FOR PIPE, CONDUIT &amp; CABLES. THIS SLEEVE IS SHOWN WITH A STEEL DECK PLATE FOR ATTACHMENT TO A CORRUGATED DECK SURFACE. RED SAFETY CAP IS INCLUDED AND PRE-INSTALLED ON EACH SLEEVE. AVAILABLE FOR 1 1/2"-6" PIPING. (FIRESTOPPING BY OTHERS)</p>	<p>15</p> <p><b>TUB ASSEMBLY CAST-IN-PLACE DEVICE</b></p> <p>THE HOLDRITE HYDROFLAME PRO SERIES TUB BOX PROVIDES A UL LISTED FIRESTOP SOLUTION. SEE UL FIRE RESISTANCE DIRECTORY FOR DETAILS.</p>	
<p>19</p> <p><b>AERATOR ADAPTER BOX &amp; SLEEVE CAST-IN-PLACE SLEEVE</b></p> <p>THE HOLDRITE HYDROFLAME™ PRO SERIES AERATOR BOXES ALLOW FOR CONNECTION OF FITTINGS INSTALLED HIGH AND TIGHT TO A CONCRETE OVERHEAD SLAB. ACCEPTS 2", 3", 4", OR 6" SLEEVE MOUNTED ON TOP. SEE UL FIRE RESISTANCE DIRECTORY FOR DETAILS.</p>	<p>20</p> <p><b>STANDARD CONCRETE DECK SLEEVE with WATER DAM CAST-IN-PLACE SLEEVE</b></p> <p>SHOWN WITH HOLDRITE HYDROFLAME PRO SERIES CAST-IN-PLACE FIRESTOP SLEEVE WITH 2" TALL WATER DAM. THIS SLEEVE CAN BE USED FOR A WIDE VARIETY OF PIPE MATERIALS UP TO 6" DIAMETER, DEPENDING ON PIPE TYPE. SEE UL FIRE RESISTANCE DIRECTORY FOR DETAILS.</p>	

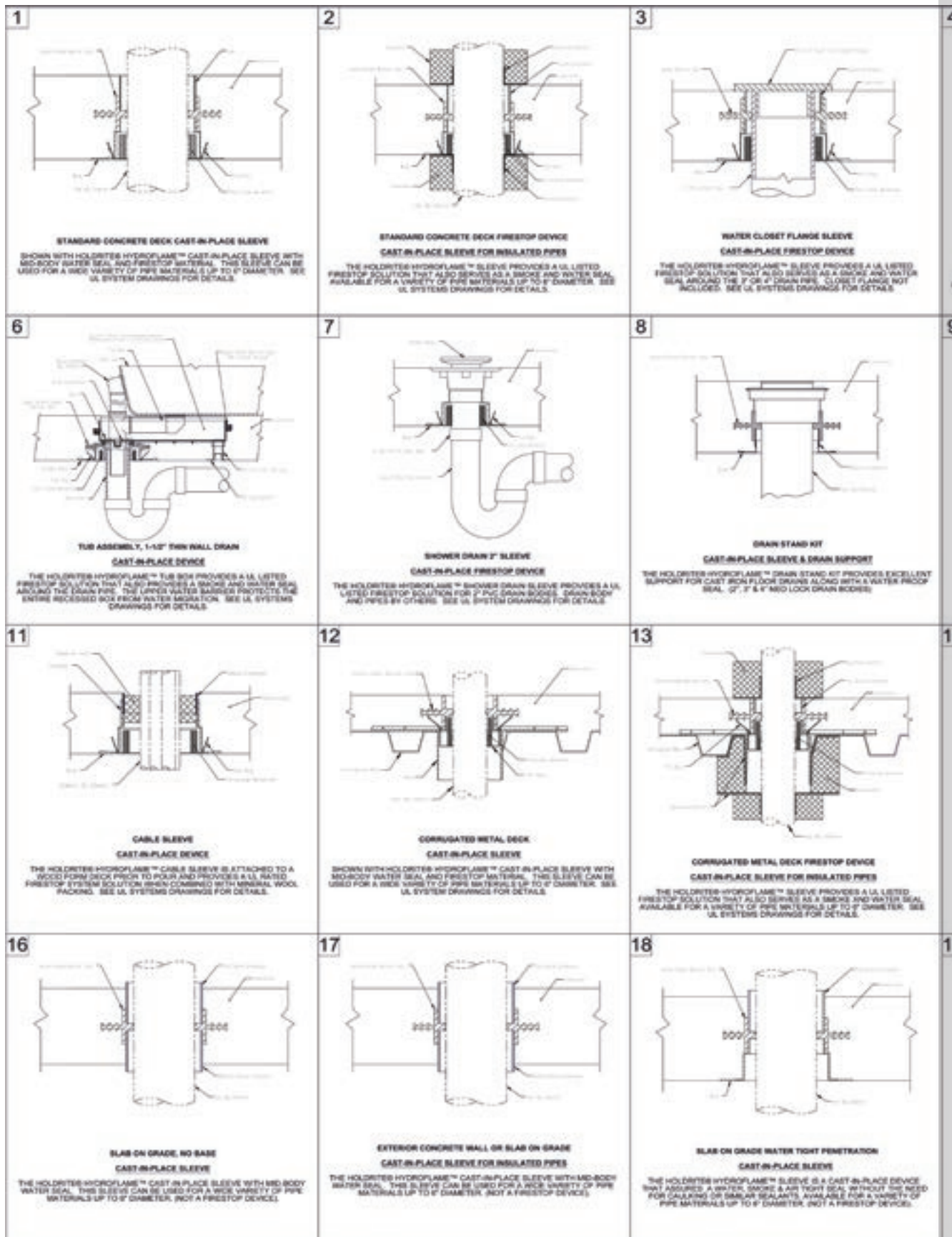
Customized installation detail pages can be created upon request.

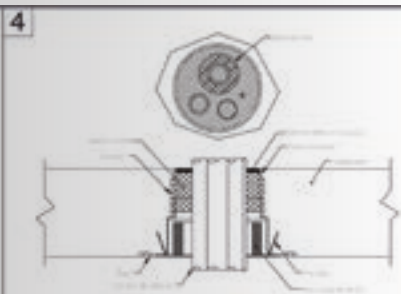
Visit [holdrite.com](http://holdrite.com) for individual application drawings.

Your company name and/or logo



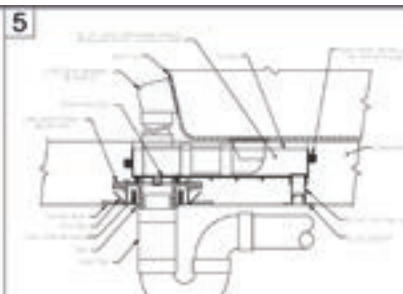
# HoldRite® HydroFlame™ Custom Built Installation Details Page





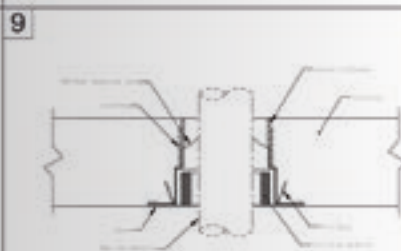
**CABLE & LINE SET FIRESTOP SLEEVE**  
**CAST-IN-PLACE SLEEVE**

THE HOLDRITE HYDROFLAME™ LINE SET FIRESTOP SLEEVE IS A UL LISTED FIRESTOP DEVICE FOR USE WITH LINE SET PIPING AND TUBING OR FOR CABLES PASSING THROUGH A CONCRETE SLAB FLOOR. SEE UL SYSTEMS DRAWINGS FOR DETAILS.



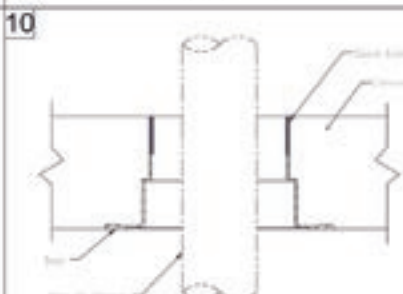
**TUB ASSEMBLY, 1-1/2" PIPE SIZE DRAIN**  
**CAST-IN-PLACE DEVICE**

THE HOLDRITE HYDROFLAME™ TUB BOX PROVIDES A UL LISTED FIRESTOP SOLUTION THAT ALSO PROVIDES A SMOKE AND WATER SEAL AROUND THE DRAIN PIPE. THE UPPER WATER BARRIER PROTECTS THE ENTIRE RECESSED BOX FROM WATER INGRATION. SEE UL SYSTEMS DRAWINGS FOR DETAILS.



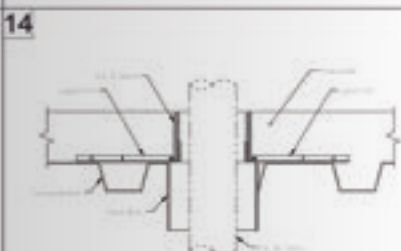
**OPTIONAL PIPE SIZE SLEEVE**  
**CAST-IN-PLACE SLEEVE**

THE HOLDRITE HYDROFLAME™ OPTIONAL PIPE SIZE SLEEVES ALLOW FOR A RANGE OF PIPE SIZES (1/2" - 8") AND VERTICAL TYPES TO PASS THROUGH AND ALLOW FOR OFF-CENTER ALIGNMENT. THESE ARE UL LISTED FIRESTOP DEVICES THAT ALSO PROVIDE A SMOKE AND WATER STOP. SEE UL SYSTEMS DRAWINGS FOR DETAILS.



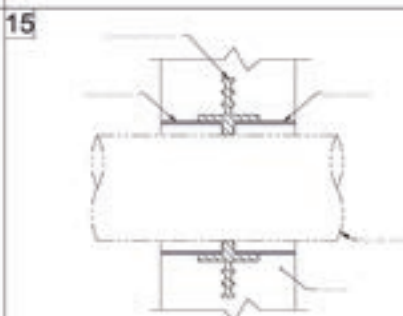
**CONCRETE SLEEVE FOR WOOD FORM DECK**  
**CAST-IN-PLACE SLEEVE**

THE HOLDRITE HYDROFLAME™ SLEEVE ATTACHES TO A WOOD FORM DECK AND PROVIDES A PATHWAY THROUGH A CONCRETE SLAB FOR PIPE, CONDUIT & CABLEING. OSHA COMPLIANT SAFETY CAP IS INCLUDED. FOR 1/2" - 8" PIPING (FIRESTOP BY OTHERS).



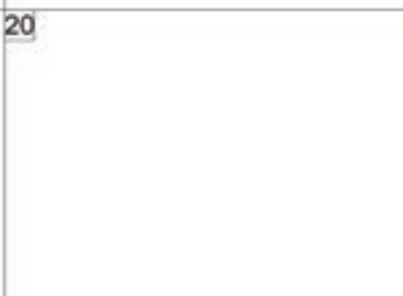
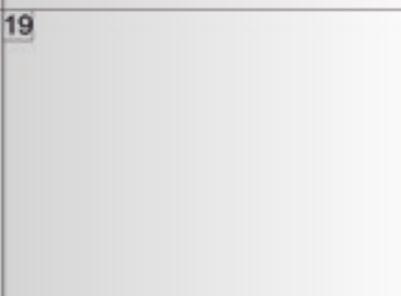
**CONCRETE SLEEVE FOR CORRUGATED METAL DECK**  
**CORRUGATED CAST-IN-PLACE SLEEVE**

THE HOLDRITE HYDROFLAME™ SLEEVE PROVIDES A PATHWAY THROUGH A CONCRETE SLAB FOR PIPE, CONDUIT & CABLEING. THIS SLEEVE INCLUDES SUPPORT ARMS FOR ATTACHMENT TO THE CORRUGATED DECK SURFACE. RED SAFETY CAP IS INCLUDED AND PRE-INSTALLED ON EACH SLEEVE. AVAILABLE FOR 1/2" - 8" PIPING (FIRESTOPPING BY OTHERS).



**EXTERIOR CONCRETE WALL, NO BASE**  
**CAST-IN-PLACE SLEEVE**

THE HOLDRITE HYDROFLAME™ CAST-IN-PLACE SLEEVE WITH MID-BODY WATER SEAL. THIS SLEEVE CAN BE USED FOR A WIDE VARIETY OF PIPE, MATERIALS UP TO 8" DIAMETER, (NOT A FIRESTOP DEVICE).



**HOLDRITE®**  
**EZ-STRAUT™**  
**PEXRITE®**  
**LOCKRITE™**  
**TESTRITE™**  
**QUICKSTRAP®**  
**HOLDRITE® SILENCER™ SYSTEM**

**HoldRite®**



Revision: \_\_\_\_\_

\_\_\_\_\_

\_\_\_\_\_

\_\_\_\_\_

\_\_\_\_\_

\_\_\_\_\_

\_\_\_\_\_

\_\_\_\_\_

\_\_\_\_\_

\_\_\_\_\_

\_\_\_\_\_

\_\_\_\_\_

\_\_\_\_\_

\_\_\_\_\_

\_\_\_\_\_

\_\_\_\_\_

\_\_\_\_\_

\_\_\_\_\_

\_\_\_\_\_

\_\_\_\_\_

\_\_\_\_\_

\_\_\_\_\_

\_\_\_\_\_

\_\_\_\_\_

\_\_\_\_\_

\_\_\_\_\_

\_\_\_\_\_

\_\_\_\_\_

\_\_\_\_\_

\_\_\_\_\_

\_\_\_\_\_

THE INFORMATION CONTAINED IN THIS DRAWING IS THE SOLE PROPERTY OF HUSBAND OVERSEAS. ANY REPRODUCTION IN PART OR WHOLE WITHOUT THE WRITTEN PERMISSION OF HUSBAND OVERSEAS IS PROHIBITED.



Customized installation detail pages can be created upon request.

Visit [holdrite.com](http://holdrite.com) for individual application drawings.

Your company name and/or logo



**Installation Details**

Dec 2009

Scale: None

Job #:

Sheet #:

**Download HoldRite CSI Division 7 and Division 22 Specifications at  
[HoldRite.com/no-charge-specification-authorship/](http://HoldRite.com/no-charge-specification-authorship/)**



**HoldRite® is proud to be an ASPE  
affiliate sponsor and CEU provider**



HoldRite now offers the opportunity for plumbing engineers and designers to earn continuing education units (CEUs) for participation in our ASPE approved educational programs. Topics include Plumbing Acoustical Isolation, Pipe Hangers and Supports, and Firestop Systems. The CEUs can be earned by scheduling a Lunch and Learn at your business location or by attending one of our scheduled webinars.

## **Access HoldRite's Comprehensive Building Information Modeling (BIM) Library**



Attention, contractors and engineers, in collaboration with Thomas For Industry, we've updated our Building Information Modeling (BIM) Library! HoldRite is a brand professionals trust for quality, reliability and performance. Providing the best digital experience has become one of the most important ways to support our customers. As our customers accelerate adoption of BIM (Building Information Modeling) for commercial building projects, getting the RIGHT data in the RIGHT format like Revit, Bentley or CADmep becomes ever more important.

The updated HoldRite BIM Online catalog provides a wide variety of CAD and BIM formats to select from – over 25 unique formats all ready for immediate download directly into your project file.

**Download our BIM Library at [bim.holdrite.com](http://bim.holdrite.com)**



FBC™ System Compatible indicates that this products has been tested, and is monitored on an ongoing basis, to assure its chemical compatibility with FlowGuard Gold®, BlazeMaster® and Corzan® piping systems and products made with TempRite® Technology.

The FBC Compatible Logo, FBC™, FlowGuard Gold®, BlazeMaster®, Corzan®, and TempRite® are trademarks of Lubrizol Advanced Materials Inc. or its affiliates.



## No-Charge VIP Estimating Service

HoldRite provides a consulting service that will provide you with a comprehensive cost savings analysis, based on the cost of materials and installation, resulting from the use of HoldRite products on your key projects. Our VIP Estimating Service includes specification and submittal assistance, 3-D CAD drawings, installed cost-savings analysis and custom installation detail pages. This NO COST service is available for any project. On average, VIP Proposals add \$20K per project to your bottom line.

- NO COST material take-offs for your projects
- Electronically transfer your construction plans and documents
- Ten day turn around on VIP Proposals
- Completed by Estimators with over 20 years of plumbing experience
- Ideal for establishing shop standards and project pre-planning for J.I.T. deliveries
- 3-D product drawings available in 5 formats
- Visit [www.HoldRite.com/vip](http://www.HoldRite.com/vip) to get started and upload plans

	LABOR COST CALCULATOR										
	Time Spent										
	\$/Hour	1 minute	2 minutes	3 minutes	4 minutes	5 minutes	6 minutes	7 minutes	8 minutes	9 minutes	10 minutes
TOTAL COST PER HOUR (\$) (Wage + Over + Benefits + Taxes)	\$10.00	\$0.17	\$0.33	\$0.50	\$0.67	\$0.83	\$1.00	\$1.17	\$1.33	\$1.50	\$1.67
	\$15.00	\$0.25	\$0.50	\$0.75	\$1.00	\$1.25	\$1.50	\$1.75	\$2.00	\$2.25	\$2.50
	\$20.00	\$0.33	\$0.67	\$1.00	\$1.33	\$1.67	\$2.00	\$2.33	\$2.67	\$3.00	\$3.33
	\$25.00	\$0.42	\$0.83	\$1.25	\$1.67	\$2.08	\$2.50	\$2.92	\$3.33	\$3.75	\$4.17
	\$30.00	\$0.50	\$1.00	\$1.50	\$2.00	\$2.50	\$3.00	\$3.50	\$4.00	\$4.50	\$5.00
	\$35.00	\$0.58	\$1.17	\$1.75	\$2.33	\$2.92	\$3.50	\$4.08	\$4.67	\$5.25	\$5.83
	\$40.00	\$0.67	\$1.33	\$2.00	\$2.67	\$3.33	\$4.00	\$4.67	\$5.33	\$6.00	\$6.67
	\$45.00	\$0.75	\$1.50	\$2.25	\$3.00	\$3.75	\$4.50	\$5.25	\$6.00	\$6.75	\$7.50
	\$50.00	\$0.83	\$1.67	\$2.50	\$3.33	\$4.17	\$5.00	\$5.83	\$6.67	\$7.50	\$8.33
	\$55.00	\$0.92	\$1.83	\$2.75	\$3.67	\$4.58	\$5.50	\$6.42	\$7.33	\$8.25	\$9.17
	\$60.00	\$1.00	\$2.00	\$3.00	\$4.00	\$5.00	\$6.00	\$7.00	\$8.00	\$9.00	\$10.00
	\$65.00	\$1.08	\$2.17	\$3.25	\$4.33	\$5.42	\$6.50	\$7.58	\$8.67	\$9.75	\$10.83
	\$70.00	\$1.17	\$2.33	\$3.50	\$4.67	\$5.83	\$7.00	\$8.17	\$9.33	\$10.50	\$11.67
	\$75.00	\$1.25	\$2.50	\$3.75	\$5.00	\$6.25	\$7.50	\$8.75	\$10.00	\$11.25	\$12.50
	\$80.00	\$1.33	\$2.67	\$4.00	\$5.33	\$6.67	\$8.00	\$9.33	\$10.67	\$12.00	\$13.33
	\$85.00	\$1.42	\$2.83	\$4.25	\$5.67	\$7.08	\$8.50	\$9.92	\$11.33	\$12.75	\$14.17
	\$90.00	\$1.50	\$3.00	\$4.50	\$6.00	\$7.50	\$9.00	\$10.50	\$12.00	\$13.50	\$15.00
	\$95.00	\$1.58	\$3.17	\$4.75	\$6.33	\$7.92	\$9.50	\$11.08	\$12.67	\$14.25	\$15.83
	\$100.00	\$1.67	\$3.33	\$5.00	\$6.67	\$8.33	\$10.00	\$11.67	\$13.33	\$15.00	\$16.67
	\$110.00	\$1.83	\$3.67	\$5.50	\$7.33	\$9.17	\$11.00	\$12.83	\$14.67	\$16.50	\$18.33
	\$120.00	\$2.00	\$4.00	\$6.00	\$8.00	\$10.00	\$12.00	\$14.00	\$16.00	\$18.00	\$20.00
	\$130.00	\$2.17	\$4.33	\$6.50	\$8.67	\$10.83	\$13.00	\$15.17	\$17.33	\$19.50	\$21.67
	\$140.00	\$2.33	\$4.67	\$7.00	\$9.33	\$11.67	\$14.00	\$16.33	\$18.67	\$21.00	\$23.33
	\$150.00	\$2.50	\$5.00	\$7.50	\$10.00	\$12.50	\$15.00	\$17.50	\$20.00	\$22.50	\$25.00

## CAD Files

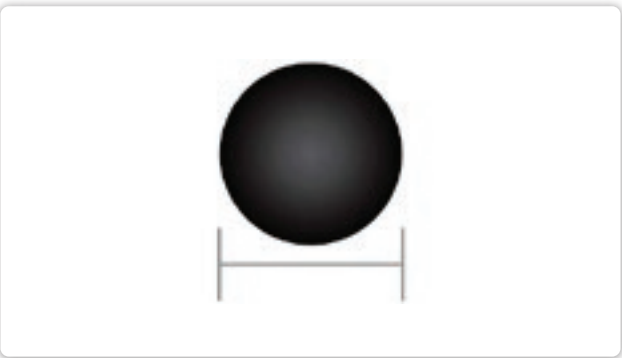
Incorporate HoldRite product drawings directly into your plans. Various formats are available, such as DWG, Revit or PDF. Download CAD files at [holdrite.com/library/3-d-cad-drawings/](http://holdrite.com/library/3-d-cad-drawings/).



# HoldRite® HydroFlame™ Online Tools

## HydroFlame Deck Hole Penetration Calculator

**CORRUGATED SLEEVE**  
Deck Hole Cutout



PIPE SIZE	"CUSTOM BUILT" HOLE CUT SIZE	"PRO SERIES" HOLE CUT SIZE
1/2"	3 3/16"	2 3/4"
3/4"	3 7/16"	2 3/4"
1"	3 11/16"	2 3/4"
1 1/4"	4"	4"
1 1/2"	4 1/4"	4"
2"	4 3/4"	4"
2 1/2"	5 1/4"	5"
3"	5 7/8"	5"
4"	6 7/8"	6"
6"	9 7/8"	8 1/4"

## Center to Center Calculator

Use our online calculator:  
<https://holdrite.com/hydroflame-custom-built-deck-hole-penetration-calculator/>

Hole Penetration Calculator

SELECT A DECK TYPE

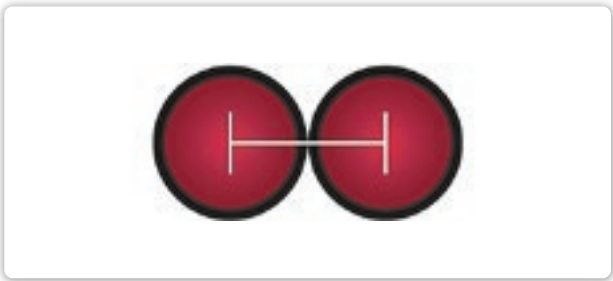
Please select a value

SELECT THE FIRST MODEL

SELECT THE SECOND MODEL

Calculate

## SLEEVE NESTING | Center-to-Center



## HoldRite HydroFlame Firestop Submittal Generator

HoldRite’s HydroFlame Submittal Generator makes compiling a submittal package of HoldRite engineered solutions fast and easy. To get started, simply create a User Account using the short form below, log-in and complete the required fields. Next, select the desired product categories, and click “Generate.” A submittal package in .PDF format will be generated instantly and saved in your account.

[holdrite.com/submittals/](https://holdrite.com/submittals/)

USER ACCOUNT

SIGN IN

CREATE ACCOUNT

RESET PASSWORD

Sign in to User Account

• E-Mail

• required fields

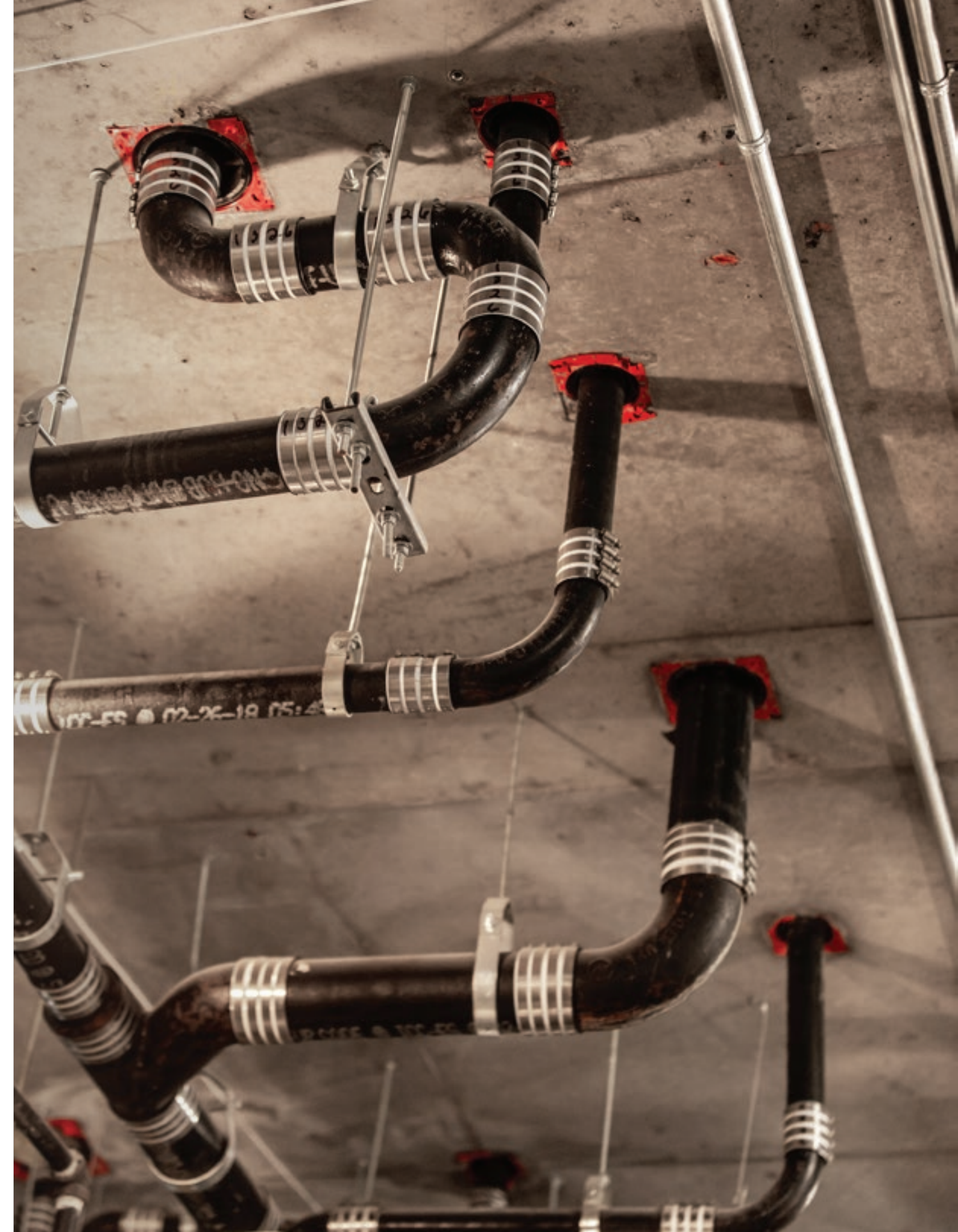
• Password

• Captcha

6554

remember me

Sign In







## CONTACT US

### Have questions or comments?

Need samples, additional product data or a price quote?

Reach out to us by phone, fax or email.

**Our dedicated Customer Support Team is ready to help.**

We look forward to working with you.

**Toll-Free:** 800-321-0316 | **Phone:** 760-744-6944 | **Fax:** 760-744-0507  
holdrite.com | sales@holdrite.com







# APPENDIX

Model #	Product Description	Page(s)
HF50S-20S	Smoke & Acoustic Sealant (White) , 20.2 oz. Sausage	19
HF100-10C	Firestop Sealant (Red), 10.3 oz. Cartridge	20
HF100-20S	Firestop Sealant (Red), 20.2 oz. Sausage	20
HF100-30C	Firestop Sealant (Red), 30 oz. Cartridge	20
HF100-5B	Firestop Sealant (Red), 10.3 oz. 5 Gal.	20
HF200-10C	Firestop Sealant (Red), 10.3 oz. Cartridge	21
HF200-20S	Firestop Sealant (Red), 20.2 oz. Sausage	21
HF200-30C	Firestop Sealant (Red), 30 oz. Cartridge	21
HF200-5B	Firestop Sealant (Red), 10.3 oz. 5 Gal.	21
HF-PC-0150	Pipe Collar, 1½"	22
HF-PC-0200	Pipe Collar, 2"	22
HF-PC-0300	Pipe Collar, 3"	22
HF-PC-0400	Pipe Collar, 4"	22
HF-PC-0600	Pipe Collar, 6"	22
HF-PP-1	Putty Pad, 7" x 7" x ⅛"	23
HF-WS14-0100	Wrap Strips, 1" x 12' Roll	24
HF-WS14-0200	Wrap Strips, 2" x 12' Roll	24
HF-CC-0100	Custom Wrap Strip, 1" x 50' Roll	24
HF-CC-0200	Custom Wrap Strip, 2" x 50' Roll	24
HF-CG-20SP	Premium Caulk Gun, 20 oz.	25
HF-CG-20SE	Economy Caulk Gun, 20 oz.	25
HF-CG-32B	Bulk Loading Caulk Gun, 32 oz.	25
HF-FP-5	Bulk Loading Follow Plates, 5 Gal.	25
HF-CG-T20	Replacement Tips (Cone). 20 oz.	25
HF-CG-T32	Replacement Tips (Cone), 32 oz.	25

Model #	Product Description	Penetrant Pipe Size	Page(s)
HFP-P1	HoldRite HydroFlame Pro Series Telescoping Firestop Sleeves (8"-12")	1/2" - 1"	34
HFP-P2	HoldRite HydroFlame Pro Series Telescoping Firestop Sleeves (8"-12")	1-1/4" - 2"	34
HFP-P3	HoldRite HydroFlame Pro Series Telescoping Firestop Sleeves (8"-12")	2" - 3"	34
HFP-P4	HoldRite HydroFlame Pro Series Telescoping Firestop Sleeves (8"-12")	3" - 4"	34
HFP-P6	HoldRite HydroFlame Pro Series Telescoping Firestop Sleeves (8"-12")	5" - 6"	34
HFP-M1	HoldRite HydroFlame Pro Series Telescoping Firestop Sleeves (8"-12")	1/2" - 1"	34
HFP-M2	HoldRite HydroFlame Pro Series Telescoping Firestop Sleeves (8"-12")	1-1/4" - 2"	34
HFP-M3	HoldRite HydroFlame Pro Series Telescoping Firestop Sleeves (8"-12")	2" - 3"	34
HFP-M4	HoldRite HydroFlame Pro Series Telescoping Firestop Sleeves (8"-12")	3" - 4"	34
HFP-M6	HoldRite HydroFlame Pro Series Telescoping Firestop Sleeves (8"-12")	5" - 6"	34
HFP-P1B	HoldRite HydroFlame Pro Series Non-Telescoping Firestop Sleeves (7-3/4")	1/2" - 1"	35
HFP-P2B	HoldRite HydroFlame Pro Series Non-Telescoping Firestop Sleeves (7-3/4")	1-1/4" - 2"	35
HFP-P3B	HoldRite HydroFlame Pro Series Non-Telescoping Firestop Sleeves (7-3/4")	2" - 3"	35
HFP-P4B	HoldRite HydroFlame Pro Series Non-Telescoping Firestop Sleeves (7-3/4")	3" - 4"	35
HFP-P6B	HoldRite HydroFlame Pro Series Non-Telescoping Firestop Sleeves (7-3/4")	5" - 6"	35
HFP-M1B	HoldRite HydroFlame Pro Series Non-Telescoping Firestop Sleeves (7-3/4")	1/2" - 1"	35
HFP-M2B	HoldRite HydroFlame Pro Series Non-Telescoping Firestop Sleeves (7-3/4")	1-1/4" - 2"	35
HFP-M3B	HoldRite HydroFlame Pro Series Non-Telescoping Firestop Sleeves (7-3/4")	2" - 3"	35
HFP-M4B	HoldRite HydroFlame Pro Series Non-Telescoping Firestop Sleeves (7-3/4")	3" - 4"	35
HFP-M6B	HoldRite HydroFlame Pro Series Non-Telescoping Firestop Sleeves (7-3/4")	5" - 6"	35
HFP-H2	HoldRite HydroFlame Pro Series Telescoping Hollow Sleeves 8"-12"	1/4" - 1 1/4"	36
HFP-H3	HoldRite HydroFlame Pro Series Telescoping Hollow Sleeves 8"-12"	1" - 2"	36
HFP-H4	HoldRite HydroFlame Pro Series Telescoping Hollow Sleeves 8"-12"	1-1/4" - 3"	36
HFP-H5	HoldRite HydroFlame Pro Series Telescoping Hollow Sleeves 8"-12"	2-1/2" - 4"	36
HFP-H7	HoldRite HydroFlame Pro Series Telescoping Hollow Sleeves 8"-12"	4" - 6"	36
HFP-H2B	HoldRite HydroFlame Pro Series Non-Telescoping Hollow Sleeves 7-3/4"	1/4" - 1 1/4"	37
HFP-H3B	HoldRite HydroFlame Pro Series Non-Telescoping Hollow Sleeves 7-3/4"	1" - 2"	37
HFP-H4B	HoldRite HydroFlame Pro Series Non-Telescoping Hollow Sleeves 7-3/4"	1-1/4" - 3"	37
HFP-H5B	HoldRite HydroFlame Pro Series Non-Telescoping Hollow Sleeves 7-3/4"	2-1/2" - 4"	37
HFP-H7B	HoldRite HydroFlame Pro Series Non-Telescoping Hollow Sleeves 7-3/4"	4" - 6"	37
HFPCD1	HoldRite HydroFlame Pro Series Corrugated Metal Deck Plates	1/4" - 1-1/4"	38
HFPCD2	HoldRite HydroFlame Pro Series Corrugated Metal Deck Plates	1" - 2"	38
HFPCD3	HoldRite HydroFlame Pro Series Corrugated Metal Deck Plates	1-1/4" - 3"	38
HFPCD4	HoldRite HydroFlame Pro Series Corrugated Metal Deck Plates	2-1/2" - 4"	38
HFPCD6	HoldRite HydroFlame Pro Series Corrugated Metal Deck Plates	4" - 6"	38
HFPCD6-DC	HoldRite HydroFlame Pro Series Corrugated Metal Deck Plates	4" - 6"	38
HFPE1	HoldRite HydroFlame Pro Series Extension Sleeves	1/2" - 1"	39
HFPE2	HoldRite HydroFlame Pro Series Extension Sleeves	1-1/4" - 2"	39
HFPE3	HoldRite HydroFlame Pro Series Extension Sleeves	2" - 3"	39
HFPE4	HoldRite HydroFlame Pro Series Extension Sleeves	3" - 4"	39
HFPE6	HoldRite HydroFlame Pro Series Extension Sleeves	5" - 6"	39
HFPWM1	HoldRite HydroFlame Pro Series Water Modules	1/2" - 1"	40
HFPWM2	HoldRite HydroFlame Pro Series Water Modules	1-1/4" - 2"	40
HFPWM3	HoldRite HydroFlame Pro Series Water Modules	2" - 3"	40



Model #	Product Description	Penetrant Pipe Size	Page(s)
HFPWM4	HoldRite HydroFlame Pro Series Water Modules	3" - 4"	40
HFPWM6	HoldRite HydroFlame Pro Series Water Modules	5" - 6"	40
HFPWD1	HoldRite HydroFlame Pro Series Water Dams	1/2" - 1"	41
HFPWD2	HoldRite HydroFlame Pro Series Water Dams	1-1/4" - 2"	41
HFPWD3	HoldRite HydroFlame Pro Series Water Dams	2" - 3"	41
HFPWD4	HoldRite HydroFlame Pro Series Water Dams	3" - 4"	41
HFPWD6	HoldRite HydroFlame Pro Series Water Dams	5" - 6"	41
HFPTB-TW-0200	HoldRite HydroFlame Pro Series Tub Boxes	1-1/2"	42
HFPTB-NP-0200	HoldRite HydroFlame Pro Series Tub Boxes	1-1/2"	42
HFPTB-1.5NP	1 1/2" IPS Tub Box Donut	1-1/2"	42
HFP-A2	HoldRite HydroFlame Pro Series Aerator Adapters	1/4" - 2"	43
HFP-A3	HoldRite HydroFlame Pro Series Aerator Adapters	1-1/4" - 3"	43
HFP-A4	HoldRite HydroFlame Pro Series Aerator Adapters	2-1/2" - 4"	43
HFP-A6	HoldRite HydroFlame Pro Series Aerator Adapters	4" - 6"	43
HFP-SH2-DRN	HoldRite HydroFlame Pro Series Shower Drain Sleeve	2"	44
HFP-2CI-DRN	HoldRite HydroFlame Pro Series Cast Iron Drain Sleeves	2"	45
HFP-23CI-DRN	HoldRite HydroFlame Pro Series Cast Iron Drain Sleeves	2" - 3"	45
HFP-34CI-DRN	HoldRite HydroFlame Pro Series Cast Iron Drain Sleeves	3" - 4"	45
HFP-6CI-DRN	HoldRite HydroFlame Pro Series Cast Iron Drain Sleeves	6"	45
HFP-CSM2	HoldRite HydroFlame Pro Series Cable & Line-Set Sleeves	Various	46
HFP-CSM3	HoldRite HydroFlame Pro Series Cable & Line-Set Sleeves	Various	46
HFP-CSM2B	HoldRite HydroFlame Pro Series Cable & Line-Set Sleeves	Various	46
HFP-CSM3B	HoldRite HydroFlame Pro Series Cable & Line-Set Sleeves	Various	46
HFP-LSP3	HoldRite HydroFlame Pro Series Cable & Line-Set Sleeves	Various	46
HFP-LSP3B	HoldRite HydroFlame Pro Series Cable & Line-Set Sleeves	Various	46
HFP-CF3PL	HoldRite HydroFlame Pro Series Closet Flange Sleeves	3"	47
HFP-CF4PL	HoldRite HydroFlame Pro Series Closet Flange Sleeves	3" - 4"	47
HFP-CF3NH	HoldRite HydroFlame Pro Series Closet Flange Sleeves	3"	47
HFP-CF4NH	HoldRite HydroFlame Pro Series Closet Flange Sleeves	3" - 4"	47
HFPT	HoldRite Hydroflame Pro Series Safety Cap Tool	1/2" - 6"	47
<b>Accessories Available</b>			
HFP-IS1	Spigot Extension Sleeve #1 Firestop Sleeve - #2 Hollow Sleeve		
HFP-IS2	Spigot Extension Sleeve #2 Firestop Sleeve - #3 Hollow Sleeve		
HFP-IS3	Spigot Extension Sleeve #3 Firestop Sleeve - #4 Hollow Sleeve		
HFP-IS4	Spigot Extension Sleeve #4 Firestop Sleeve - #5 Hollow Sleeve		
HFP-IS6	Spigot Extension Sleeve #6 Firestop Sleeve - #7 Hollow Sleeve		
HFP-SC1	Safety Cap for #1 Firestop Sleeve - #2 Hollow Sleeve		
HFP-SC2	Safety Cap for #2 Firestop Sleeve - #3 Hollow Sleeve		
HFP-SC3	Safety Cap for #3 Firestop Sleeve - #4 Hollow Sleeve		
HFP-SC4	Safety Cap for #4 Firestop Sleeve - #5 Hollow Sleeve		
HFP-SC6	Safety Cap for #6 Firestop Sleeve - #7 Hollow Sleeve		
HFP-LW-R	HoldRite HydroFlame Pro Locator Whiskers-Red		
HFP-LW-B	HoldRite HydroFlame Pro Locator Whiskers-Black		
HFP-LW-G	HoldRite HydroFlame Pro Locator Whiskers-Green		

Model #	Product Description	Pipe O.D.	Penetrant Pipe Size	Page(s)
PS-NP-0050	HydroFlame Cast-in-Place Sleeves	.840"	½"	52
PS-NP-0075	HydroFlame Cast-in-Place Sleeves	1.050"	¾"	52
PS-NP-0100	HydroFlame Cast-in-Place Sleeves	1.315"	1"	52
PS-NP-0125	HydroFlame Cast-in-Place Sleeves	1.660"	1¼"	52
PS-NP-0150	HydroFlame Cast-in-Place Sleeves	1.900"	1½"	52
PS-NP-0200	HydroFlame Cast-in-Place Sleeves	2.375"	2"	52
PS-NP-0250	HydroFlame Cast-in-Place Sleeves	2.875"	2½"	52
PS-NP-0300	HydroFlame Cast-in-Place Sleeves	3.50"	3"	52
PS-NP-0400	HydroFlame Cast-in-Place Sleeves	4.5"	4"	52
PS-NP-0600	HydroFlame Cast-in-Place Sleeves	6.625"	6"	52
PS-CP-0050	HydroFlame Cast-in-Place Sleeves	.625"	½"	52
PS-CP-0075	HydroFlame Cast-in-Place Sleeves	0.875"	¾"	52
PS-CP-0100	HydroFlame Cast-in-Place Sleeves	1.125"	1"	52
PS-CP-0125	HydroFlame Cast-in-Place Sleeves	1.375"	1¼"	52
PS-CP-0150	HydroFlame Cast-in-Place Sleeves	1.625"	1½"	52
PS-CP-0200	HydroFlame Cast-in-Place Sleeves	2.125"	2"	52
PS-CN-0050	HydroFlame Cast-in-Place Sleeves	.840"	½"	52
PS-CN-0075	HydroFlame Cast-in-Place Sleeves	1.050"	¾"	52
PS-CN-0100	HydroFlame Cast-in-Place Sleeves	1.315"	1"	52
PS-CN-0125	HydroFlame Cast-in-Place Sleeves	1.660"	1¼"	52
PS-CN-0150	HydroFlame Cast-in-Place Sleeves	1.900"	1½"	52
PS-CN-0200	HydroFlame Cast-in-Place Sleeves	2.375"	2"	52
PS-CN-0250	HydroFlame Cast-in-Place Sleeves	2.875"	2½"	52
PS-CN-0300	HydroFlame Cast-in-Place Sleeves	3.50"	3"	52
PS-CN-0400	HydroFlame Cast-in-Place Sleeves	4.5"	4"	52
PS-CN-0600	HydroFlame Cast-in-Place Sleeves	6.625"	6"	52
PS-CT-0050	HydroFlame Cast-in-Place Sleeves	.625"	½"	52
PS-CT-0075	HydroFlame Cast-in-Place Sleeves	0.875"	¾"	52
PS-CT-0100	HydroFlame Cast-in-Place Sleeves	1.125"	1"	52
PS-CT-0125	HydroFlame Cast-in-Place Sleeves	1.375"	1¼"	52
PS-CT-0150	HydroFlame Cast-in-Place Sleeves	1.625"	1½"	52
PS-CT-0200	HydroFlame Cast-in-Place Sleeves	2.125"	2"	52
PS-CT-0250	HydroFlame Cast-in-Place Sleeves	2.625"	2½"	52
PS-CT-0300	HydroFlame Cast-in-Place Sleeves	3.125"	3"	52
PS-CT-0400	HydroFlame Cast-in-Place Sleeves	4.125"	4"	52
PS-CT-0600	HydroFlame Cast-in-Place Sleeves	6.125"	6"	52
PS-CH-0200	HydroFlame Cast-in-Place Sleeves	2.38"	2"	53
PS-CH-0300	HydroFlame Cast-in-Place Sleeves	3.50"	3"	53
PS-CH-0400	HydroFlame Cast-in-Place Sleeves	4.50"	4"	53
PS-CI-0150	HydroFlame Cast-in-Place Sleeves	1.90"	1½"	53
PS-CI-0200	HydroFlame Cast-in-Place Sleeves	2.30"	2"	53

Model #	Product Description	Pipe O.D.	Penetrant Pipe Size	Page(s)
PS-CI-0300	HydroFlame Cast-in-Place Sleeves	3.30"	3"	53
PS-CI-0400	HydroFlame Cast-in-Place Sleeves	4.30"	4"	53
PS-CI-0600	HydroFlame Cast-in-Place Sleeves	6.30"	6"	53
PS-CX-0150	HydroFlame Cast-in-Place Sleeves	1.90"	1½"	53
PS-CX-0200	HydroFlame Cast-in-Place Sleeves	2.35"	2"	53
PS-CX-0300	HydroFlame Cast-in-Place Sleeves	3.35"	3"	53
PS-CX-0400	HydroFlame Cast-in-Place Sleeves	4.38"	4"	53
PS-CX-0500	HydroFlame Cast-in-Place Sleeves	5.30"	5"	53
PS-CX-0600	HydroFlame Cast-in-Place Sleeves	6.30"	6"	53
PS-ST-0050	HydroFlame Cast-in-Place Sleeves	.840"	½"	53
PS-ST-0075	HydroFlame Cast-in-Place Sleeves	1.050"	¾"	53
PS-ST-0100	HydroFlame Cast-in-Place Sleeves	1.315"	1"	53
PS-ST-0125	HydroFlame Cast-in-Place Sleeves	1.660"	1¼"	53
PS-ST-0150	HydroFlame Cast-in-Place Sleeves	1.900"	1½"	53
PS-ST-0200	HydroFlame Cast-in-Place Sleeves	2.375"	2"	53
PS-ST-0250	HydroFlame Cast-in-Place Sleeves	2.875"	2½"	53
PS-ST-0300	HydroFlame Cast-in-Place Sleeves	3.50"	3"	53
PS-ST-0400	HydroFlame Cast-in-Place Sleeves	4.5"	4"	53
PS-ST-0600	HydroFlame Cast-in-Place Sleeves	6.625"	6"	53
PS-ET-0050	HydroFlame Cast-in-Place Sleeves	0.706"	½"	53
PS-ET-0075	HydroFlame Cast-in-Place Sleeves	0.922"	¾"	53
PS-ET-0100	HydroFlame Cast-in-Place Sleeves	1.163"	1"	53
PS-ET-0125	HydroFlame Cast-in-Place Sleeves	1.51"	1¼"	53
PS-ET-0150	HydroFlame Cast-in-Place Sleeves	1.74"	1½"	53
PS-ET-0200	HydroFlame Cast-in-Place Sleeves	2.197"	2"	53
PS-ET-0250	HydroFlame Cast-in-Place Sleeves	2.875"	2½"	53
PS-ET-0300	HydroFlame Cast-in-Place Sleeves	3.5"	3"	53
PS-ET-0400	HydroFlame Cast-in-Place Sleeves	4.5"	4"	53
CD-NP-0050	Corrugated Cast-in-Place Sleeves	.840"	½"	54
CD-NP-0075	Corrugated Cast-in-Place Sleeves	1.050"	¾"	54
CD-NP-0100	Corrugated Cast-in-Place Sleeves	1.315"	1"	54
CD-NP-0125	Corrugated Cast-in-Place Sleeves	1.660"	1¼"	54
CD-NP-0150	Corrugated Cast-in-Place Sleeves	1.900"	1½"	54
CD-NP-0200	Corrugated Cast-in-Place Sleeves	2.375"	2"	54
CD-NP-0250	Corrugated Cast-in-Place Sleeves	2.875"	2½"	54
CD-NP-0300	Corrugated Cast-in-Place Sleeves	3.50"	3"	54
CD-NP-0400	Corrugated Cast-in-Place Sleeves	4.5"	4"	54
CD-NP-0600	Corrugated Cast-in-Place Sleeves	6.625"	6"	54
CD-CP-0050	Corrugated Cast-in-Place Sleeves	.625"	½"	54
CD-CP-0075	Corrugated Cast-in-Place Sleeves	0.875"	¾"	54
CD-CP-0100	Corrugated Cast-in-Place Sleeves	1.125"	1"	54
CD-CP-0125	Corrugated Cast-in-Place Sleeves	1.375"	1¼"	54

Model #	Product Description	Pipe O.D.	Penetrant Pipe Size	Page(s)
CD-CP-0150	Corrugated Cast-in-Place Sleeves	1.625"	1½"	54
CD-CP-0200	Corrugated Cast-in-Place Sleeves	2.125"	2"	54
CD-CN-0050	Corrugated Cast-in-Place Sleeves	.840"	½"	54
CD-CN-0075	Corrugated Cast-in-Place Sleeves	1.050"	¾"	54
CD-CN-0100	Corrugated Cast-in-Place Sleeves	1.315"	1"	54
CD-CN-0125	Corrugated Cast-in-Place Sleeves	1.660"	1¼"	54
CD-CN-0150	Corrugated Cast-in-Place Sleeves	1.900"	1½"	54
CD-CN-0200	Corrugated Cast-in-Place Sleeves	2.375"	2"	54
CD-CN-0250	Corrugated Cast-in-Place Sleeves	2.875"	2½"	54
CD-CN-0300	Corrugated Cast-in-Place Sleeves	3.50"	3"	54
CD-CN-0400	Corrugated Cast-in-Place Sleeves	4.5"	4"	54
CD-CN-0600	Corrugated Cast-in-Place Sleeves	6.625"	6"	54
CD-CT-0050	Corrugated Cast-in-Place Sleeves	.625"	½"	54
CD-CT-0075	Corrugated Cast-in-Place Sleeves	0.875"	¾"	54
CD-CT-0100	Corrugated Cast-in-Place Sleeves	1.125"	1"	54
CD-CT-0125	Corrugated Cast-in-Place Sleeves	1.375"	1¼"	54
CD-CT-0150	Corrugated Cast-in-Place Sleeves	1.625"	1½"	54
CD-CT-0200	Corrugated Cast-in-Place Sleeves	2.125"	2"	54
CD-CT-0250	Corrugated Cast-in-Place Sleeves	2.625"	2½"	54
CD-CT-0300	Corrugated Cast-in-Place Sleeves	3.125"	3"	54
CD-CT-0400	Corrugated Cast-in-Place Sleeves	4.125"	4"	54
CD-CT-0600	Corrugated Cast-in-Place Sleeves	6.125"	6"	54
CD-CH-0200	Corrugated Cast-in-Place Sleeves	2.38"	2"	55
CD-CH-0300	Corrugated Cast-in-Place Sleeves	3.50"	3"	55
CD-CH-0400	Corrugated Cast-in-Place Sleeves	4.50"	4"	55
CD-CI-0150	Corrugated Cast-in-Place Sleeves	1.90"	1½"	55
CD-CI-0200	Corrugated Cast-in-Place Sleeves	2.30"	2"	55
CD-CI-0300	Corrugated Cast-in-Place Sleeves	3.30"	3"	55
CD-CI-0400	Corrugated Cast-in-Place Sleeves	4.30"	4"	55
CD-CI-0600	Corrugated Cast-in-Place Sleeves	6.30"	6"	55
CD-CX-0150	Corrugated Cast-in-Place Sleeves	1.90"	1½"	55
CD-CX-0200	Corrugated Cast-in-Place Sleeves	2.35"	2"	55
CD-CX-0300	Corrugated Cast-in-Place Sleeves	3.35"	3"	55
CD-CX-0400	Corrugated Cast-in-Place Sleeves	4.38"	4"	55
CD-CX-0500	Corrugated Cast-in-Place Sleeves	5.30"	5"	55
CD-CX-0600	Corrugated Cast-in-Place Sleeves	6.30"	6"	55
CD-ST-0050	Corrugated Cast-in-Place Sleeves	.840"	½"	55
CD-ST-0075	Corrugated Cast-in-Place Sleeves	1.050"	¾"	55
CD-ST-0100	Corrugated Cast-in-Place Sleeves	1.315"	1"	55
CD-ST-0125	Corrugated Cast-in-Place Sleeves	1.660"	1¼"	55
CD-ST-0150	Corrugated Cast-in-Place Sleeves	1.900"	1½"	55



Model #	Product Description	Pipe O.D.	Penetrant Pipe Size	Page(s)
CD-ST-0200	Corrugated Cast-in-Place Sleeves	2.375"	2"	55
CD-ST-0250	Corrugated Cast-in-Place Sleeves	2.875"	2½"	55
CD-ST-0300	Corrugated Cast-in-Place Sleeves	3.50"	3"	55
CD-ST-0400	Corrugated Cast-in-Place Sleeves	4.5"	4"	55
CD-ST-0600	Corrugated Cast-in-Place Sleeves	6.625"	6"	55
CD-ET-0050	Corrugated Cast-in-Place Sleeves	0.706"	½"	55
CD-ET-0075	Corrugated Cast-in-Place Sleeves	0.922"	¾"	55
CD-ET-0100	Corrugated Cast-in-Place Sleeves	1.163"	1"	55
CD-ET-0125	Corrugated Cast-in-Place Sleeves	1.51"	1¼"	55
CD-ET-0150	Corrugated Cast-in-Place Sleeves	1.74"	1½"	55
CD-ET-0200	Corrugated Cast-in-Place Sleeves	2.197"	2"	55
CD-ET-0250	Corrugated Cast-in-Place Sleeves	2.875"	2½"	55
CD-ET-0300	Corrugated Cast-in-Place Sleeves	3.5"	3"	55
CD-ET-0400	Corrugated Cast-in-Place Sleeves	4.5"	4"	55
HP-NP-0050	Slab and Wall Seal w/ Pipe Inserts	.840"	½"	60
HP-NP-0075	Slab and Wall Seal w/ Pipe Inserts	1.050"	¾"	60
HP-NP-0100	Slab and Wall Seal w/ Pipe Inserts	1.315"	1"	60
HP-NP-0125	Slab and Wall Seal w/ Pipe Inserts	1.660"	1¼"	60
HP-NP-0150	Slab and Wall Seal w/ Pipe Inserts	1.900"	1½"	60
HP-NP-0200	Slab and Wall Seal w/ Pipe Inserts	2.375"	2"	60
HP-NP-0250	Slab and Wall Seal w/ Pipe Inserts	2.875"	2½"	60
HP-NP-0300	Slab and Wall Seal w/ Pipe Inserts	3.50"	3"	60
HP-NP-0400	Slab and Wall Seal w/ Pipe Inserts	4.5"	4"	60
HP-NP-0600	Slab and Wall Seal w/ Pipe Inserts	6.625"	6"	60
HP-CP-0050	Slab and Wall Seal w/ Pipe Inserts	.625"	½"	60
HP-CP-0075	Slab and Wall Seal w/ Pipe Inserts	0.875"	¾"	60
HP-CP-0100	Slab and Wall Seal w/ Pipe Inserts	1.125"	1"	60
HP-CP-0125	Slab and Wall Seal w/ Pipe Inserts	1.375"	1¼"	60
HP-CP-0150	Slab and Wall Seal w/ Pipe Inserts	1.625"	1½"	60
HP-CP-0200	Slab and Wall Seal w/ Pipe Inserts	2.125"	2"	60
HP-CN-0050	Slab and Wall Seal w/ Pipe Inserts	.840"	½"	60
HP-CN-0075	Slab and Wall Seal w/ Pipe Inserts	1.050"	¾"	60
HP-CN-0100	Slab and Wall Seal w/ Pipe Inserts	1.315"	1"	60
HP-CN-0125	Slab and Wall Seal w/ Pipe Inserts	1.660"	1¼"	60
HP-CN-0150	Slab and Wall Seal w/ Pipe Inserts	1.900"	1½"	60
HP-CN-0200	Slab and Wall Seal w/ Pipe Inserts	2.375"	2"	60
HP-CN-0250	Slab and Wall Seal w/ Pipe Inserts	2.875"	2½"	60
HP-CN-0300	Slab and Wall Seal w/ Pipe Inserts	3.50"	3"	60
HP-CN-0400	Slab and Wall Seal w/ Pipe Inserts	4.5"	4"	60
HP-CN-0600	Slab and Wall Seal w/ Pipe Inserts	6.625"	6"	60
HP-CT-0050	Slab and Wall Seal w/ Pipe Inserts	.625"	½"	60
HP-CT-0075	Slab and Wall Seal w/ Pipe Inserts	0.875"	¾"	60

Model #	Product Description	Pipe O.D.	Penetrant Pipe Size	Page(s)
HP-CT-0100	Slab and Wall Seal w/ Pipe Inserts	1.125"	1"	60
HP-CT-0125	Slab and Wall Seal w/ Pipe Inserts	1.375"	1¼"	60
HP-CT-0150	Slab and Wall Seal w/ Pipe Inserts	1.625"	1½"	60
HP-CT-0200	Slab and Wall Seal w/ Pipe Inserts	2.125"	2"	60
HP-CT-0250	Slab and Wall Seal w/ Pipe Inserts	2.625"	2½"	60
HP-CT-0300	Slab and Wall Seal w/ Pipe Inserts	3.125"	3"	60
HP-CT-0400	Slab and Wall Seal w/ Pipe Inserts	4.125"	4"	60
HP-CT-0600	Slab and Wall Seal w/ Pipe Inserts	6.125"	6"	60
HP-CH-0200	Slab and Wall Seal w/ Pipe Inserts	2.38"	2"	61
HP-CH-0300	Slab and Wall Seal w/ Pipe Inserts	3.50"	3"	61
HP-CH-0400	Slab and Wall Seal w/ Pipe Inserts	4.50"	4"	61
HP-CI-0150	Slab and Wall Seal w/ Pipe Inserts	1.90"	1½"	61
HP-CI-0200	Slab and Wall Seal w/ Pipe Inserts	2.30"	2"	61
HP-CI-0300	Slab and Wall Seal w/ Pipe Inserts	3.30"	3"	61
HP-CI-0400	Slab and Wall Seal w/ Pipe Inserts	4.30"	4"	61
HP-CI-0600	Slab and Wall Seal w/ Pipe Inserts	6.30"	6"	61
HP-CX-0150	Slab and Wall Seal w/ Pipe Inserts	1.90"	1½"	61
HP-CX-0200	Slab and Wall Seal w/ Pipe Inserts	2.35"	2"	61
HP-CX-0300	Slab and Wall Seal w/ Pipe Inserts	3.35"	3"	61
HP-CX-0400	Slab and Wall Seal w/ Pipe Inserts	4.38"	4"	61
HP-CX-0500	Slab and Wall Seal w/ Pipe Inserts	5.30"	5"	61
HP-CX-0600	Slab and Wall Seal w/ Pipe Inserts	6.30"	6"	61
HP-ST-0050	Slab and Wall Seal w/ Pipe Inserts	.840"	½"	61
HP-ST-0075	Slab and Wall Seal w/ Pipe Inserts	1.050"	¾"	61
HP-ST-0100	Slab and Wall Seal w/ Pipe Inserts	1.315"	1"	61
HP-ST-0125	Slab and Wall Seal w/ Pipe Inserts	1.660"	1¼"	61
HP-ST-0150	Slab and Wall Seal w/ Pipe Inserts	1.900"	1½"	61
HP-ST-0200	Slab and Wall Seal w/ Pipe Inserts	2.375"	2"	61
HP-ST-0250	Slab and Wall Seal w/ Pipe Inserts	2.875"	2½"	61
HP-ST-0300	Slab and Wall Seal w/ Pipe Inserts	3.50"	3"	61
HP-ST-0400	Slab and Wall Seal w/ Pipe Inserts	4.5"	4"	61
HP-ST-0600	Slab and Wall Seal w/ Pipe Inserts	6.625"	6"	61
HP-ET-0050	Slab and Wall Seal w/ Pipe Inserts	0.706"	½"	61
HP-ET-0075	Slab and Wall Seal w/ Pipe Inserts	0.922"	¾"	61
HP-ET-0100	Slab and Wall Seal w/ Pipe Inserts	1.163"	1"	61
HP-ET-0125	Slab and Wall Seal w/ Pipe Inserts	1.51"	1¼"	61
HP-ET-0150	Slab and Wall Seal w/ Pipe Inserts	1.74"	1½"	61
HP-ET-0200	Slab and Wall Seal w/ Pipe Inserts	2.197"	2"	61
HP-ET-0250	Slab and Wall Seal w/ Pipe Inserts	2.875"	2½"	61
HP-ET-0300	Slab and Wall Seal w/ Pipe Inserts	3.5"	3"	61
HP-ET-0400	Slab and Wall Seal w/ Pipe Inserts	4.5"	4"	61

Model #	Product Description	Pipe O.D.	Penetrant Pipe Size	Page(s)
TB-NP-0200	Cast-in-Place Tub Box	N/A	1½"	56
TB-TW-0200	Cast-in-Place Tub Box	N/A	1½"	56
AA-0304	Aerator Adapter Box for Wood Form Deck	N/A	3" or 4"	56
AA-06	Aerator Adapter Box for Wood Form Deck	N/A	6"	56
PS-NPCF-0300	Cast-in-Place Closet Flange Sleeves	3.5"	3"	56
PS-NPCF-0400	Cast-in-Place Closet Flange Sleeves	4.5"	4"	56
PS-CICF-0300	Cast-in-Place Closet Flange Sleeves	3.30"	3"	56
PS-CICF-0400	Cast-in-Place Closet Flange Sleeves	4.30"	4"	56
PS-CXCF-0300	Cast-in-Place Closet Flange Sleeves	3.35"	3"	56
PS-CXCF-0400	Cast-in-Place Closet Flange Sleeves	4.38"	4"	56
PS-SD-0200	Cast-in-Place Shower Drain Sleeves	2.375"	2"	44, 57
HM-DK-0200	Cast-In-Place Drain Stand Kit	N/A	2"	45, 57
HM-DK-0300	Cast-In-Place Drain Stand Kit	N/A	3"	45, 57
HM-DK-0400	Cast-In-Place Drain Stand Kit	N/A	4"	45, 57
PS-LS-0300	Line Set Sleeve	Various	N/A	57
PS-CS-0200	Cable Sleeve	Various	N/A	57
PS-CS-0300	Cable Sleeve	Various	N/A	57
OPS-PL-0100	Cast-In-Place Optional Pipe Size Sleeve	.625-1.5	1/2"-1"	59
OPS-PL-0200	Cast-In-Place Optional Pipe Size Sleeve	1.375-2.5	1-1/4"-2"	59
OPS-PL-0300	Cast-In-Place Optional Pipe Size Sleeve	2.625-3.5	2"-3"	59
OPS-PL40-0300	4x3 PVC Closet Flange Sleeve	3.5	3"	47, 56, 59
OPS-PL-0400	Cast-In-Place Optional Pipe Size Sleeve	4.125-4.5	3"-4"	59
OPS-PL-0600	Cast-In-Place Optional Pipe Size Sleeve	5.125-6.625	5"-6"	59
OPS-MT-0100	Cast-In-Place Optional Pipe Size Sleeve	.625-1.5	1/2"-1"	59
OPS-MT-0200	Cast-In-Place Optional Pipe Size Sleeve	1.375-2.5	1-1/4"-2"	59
OPS-MT-0300	Cast-In-Place Optional Pipe Size Sleeve	2.625-3.5	2"-3"	59
OPS-MT-0400	Cast-In-Place Optional Pipe Size Sleeve	4.125-4.5	3"-4"	59
OPS-MT-0600	Cast-In-Place Optional Pipe Size Sleeve	5.125-6.625	5"-6"	59

Model #	Product Description	Pipe O.D.	Penetrant Pipe Size	Page(s)
CD-0125	Corrugated Deck Concrete Sleeve	1.53"	¼"-¾"	58
CD-0200	Corrugated Deck Concrete Sleeve	2.19"	¼"-1¼"	58
CD-0300	Corrugated Deck Concrete Sleeve	3.33"	1"-2"	58
CD-0400	Corrugated Deck Concrete Sleeve	4.28"	1¼"-3"	58
CD-0500	Corrugated Deck Concrete Sleeve	5.22"	2½"-4"	58
CD-0600	Corrugated Deck Concrete Sleeve	6.22"	3"-5"	58
CD-0800	Corrugated Deck Concrete Sleeve	8.21"	4"-6"	58
WD-0125	Wood Deck Concrete Sleeve	1.53"	¼"-¾"	59
WD-0200	Wood Deck Concrete Sleeve	2.19"	¼"-1 ¼"	59
WD-0300	Wood Deck Concrete Sleeve	3.33"	1"-2"	59
WD-0400	Wood Deck Concrete Sleeve	4.28"	1¼"-3"	59
WD-0500	Wood Deck Concrete Sleeve	5.22"	2½"-4"	59
WD-0600	Wood Deck Concrete Sleeve	6.22"	3"-5"	59
WD-0800	Wood Deck Concrete Sleeve	8.21"	4"-6"	59
CD-OPS-PL-0100	Corrugated Deck Optional Pipe Size Sleeve	N/A	½"-1"	58
CD-OPS-PL-0200	Corrugated Deck Optional Pipe Size Sleeve	N/A	1¼"-2"	58
CD-OPS-PL-0300	Corrugated Deck Optional Pipe Size Sleeve	N/A	2"-3"	58
CD-OPS-PL-0400	Corrugated Deck Optional Pipe Size Sleeve	N/A	3"-4"	58
CD-OPS-PL-0600	Corrugated Deck Optional Pipe Size Sleeve	N/A	5"-6"	58
CD-OPS-MT-0100	Corrugated Deck Optional Pipe Size Sleeve	N/A	½"-1"	58
CD-OPS-MT-0200	Corrugated Deck Optional Pipe Size Sleeve	N/A	1¼"-2"	58
CD-OPS-MT-0300	Corrugated Deck Optional Pipe Size Sleeve	N/A	2"-3"	58
CD-OPS-MT-0400	Corrugated Deck Optional Pipe Size Sleeve	N/A	3"-4"	58
CD-OPS-MT-0600	Corrugated Deck Optional Pipe Size Sleeve	N/A	5"-6"	58





**Caulking Guns**  
**Page 25**



Telescoping Firestop Sleeves  
Page 34



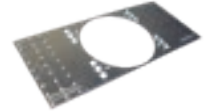
Non-Telescoping Firestop Sleeves  
Page 35



Telescoping Hollow Sleeves (Sleeve Only)  
Page 36



Non-Telescoping Hollow Sleeves (Sleeve Only)  
Page 37



Corrugated Metal Deck Plates  
Page 38



Sleeve Extensions  
Page 39



Water Modules  
Page 40



Water Dams  
Page 41



Tub Boxes  
Page 42



Aerator Adaptors  
Page 43



Closet Flange Sleeves  
(Closet Flange not included)  
Page 47



Shower Drain Sleeves  
(Shower Drain not included)  
Page 44



Cable & Line Set Sleeves  
Page 46



Cast Iron Drain Sleeves  
(Cast Iron Drain not included)  
Page 45



Safety Cap Tool  
Page 47



Wood/Flat Form Deck Sleeves  
Page 52, 53



Corrugated Metal Deck Sleeves  
Page 54, 55



Option Pipe Size Sleeves  
Page 59



Aerator Adapter Boxes  
Page 56



Closet Flange Sleeves  
(Closet Flange not included)  
Page 56



Shower Drain Sleeves  
(Shower Drain not included)  
Page 57



Floor Drain Kit  
(Floor Drain not included)  
Page 57



Tub Boxes  
Page 56



Slab and Wall Seals  
Page 60, 61



For more information and to  
find your nearest dealer visit  
[holdrite.com](http://holdrite.com)

Connect with us



Manufactured & Distributed by Reliance Worldwide Corporation.

