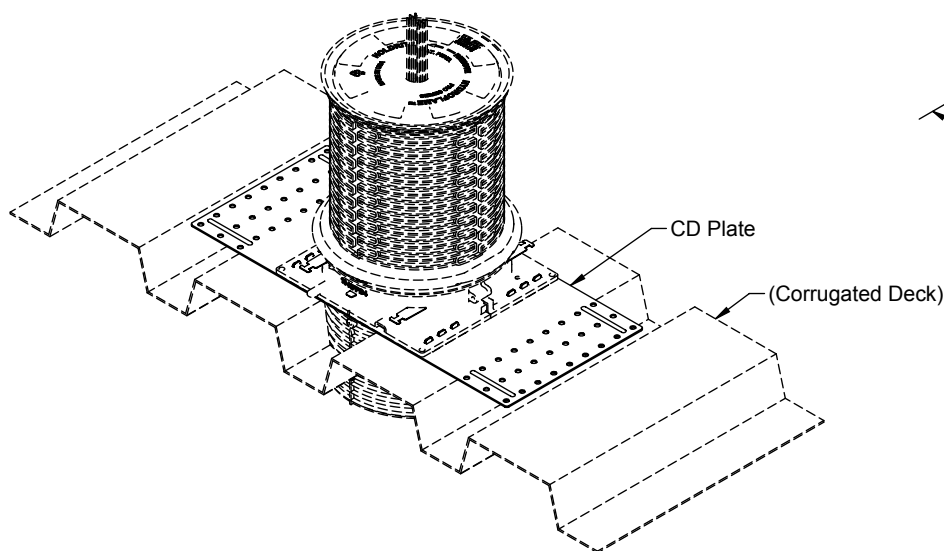
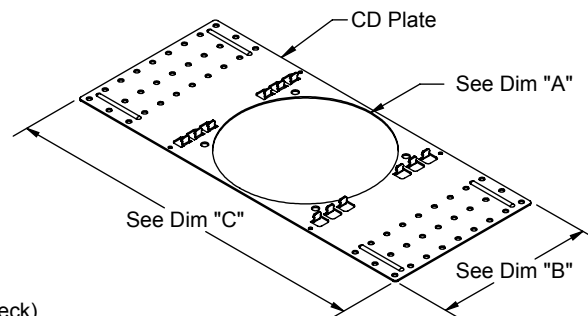


PRODUCT SPECIFICATION DRAWING

Hydroflame Sleeves Accessory - CD Plates



Shown with Corrugated Metal Deck Application
(All Sizes, 1", 2", 3", 4" & 6")



Dimension Chart				
Model	Dim "A"	Dim "B"	Dim "C"	Min. Deck Hole
HFPCD1	2-5/8"	3-3/4"	14"	2-7/8"
HFPCD2	3-3/4"	4"	14"	4"
HFPCD3	4-3/4"	5"	14"	5"
HFPCD4	5-3/4"	6"	14"	6"
HFPCD6	8-3/8"	8-7/8"	14"	8-5/8"

The **HOLDRITE® Hydroflame "Corrugated Metal Deck Plates"** transition cast-in-place firestop sleeving devices from use on a flat form deck into a sleeve for use on a corrugated metal form deck. Available for all Pro Series Sleeve sizes. Steel plate snaps onto the Base of the sleeve securely. (#8 screws can be added for increased strength)

Product Information:

- Material: 18GA, Galvanized CRS
- Patents Pending
- See Hydroflame Pro Series Installation Instructions, Best Practices documents and the latest UL Fire Resistive Directory file (R25101) for details.



THIS INFORMATION IS PROPRIETARY TO HOLDRITE AND IS SUBJECT TO CHANGE WITHOUT NOTICE. IT MAY NOT BE REPRODUCED IN PART OR WHOLE WITHOUT WRITTEN AUTHORIZATION.



800-321-0316 OR 760-744-6944 / FAX: 760-744-0507 / WWW.HOLDRITE.COM
spec_HFP Series, CD, pg6 of 12_RevA

Product Submittal	
Job Name:	
Date:	
Part Number:	Qty:
Architect / Owner:	
Contractor:	
Notes:	