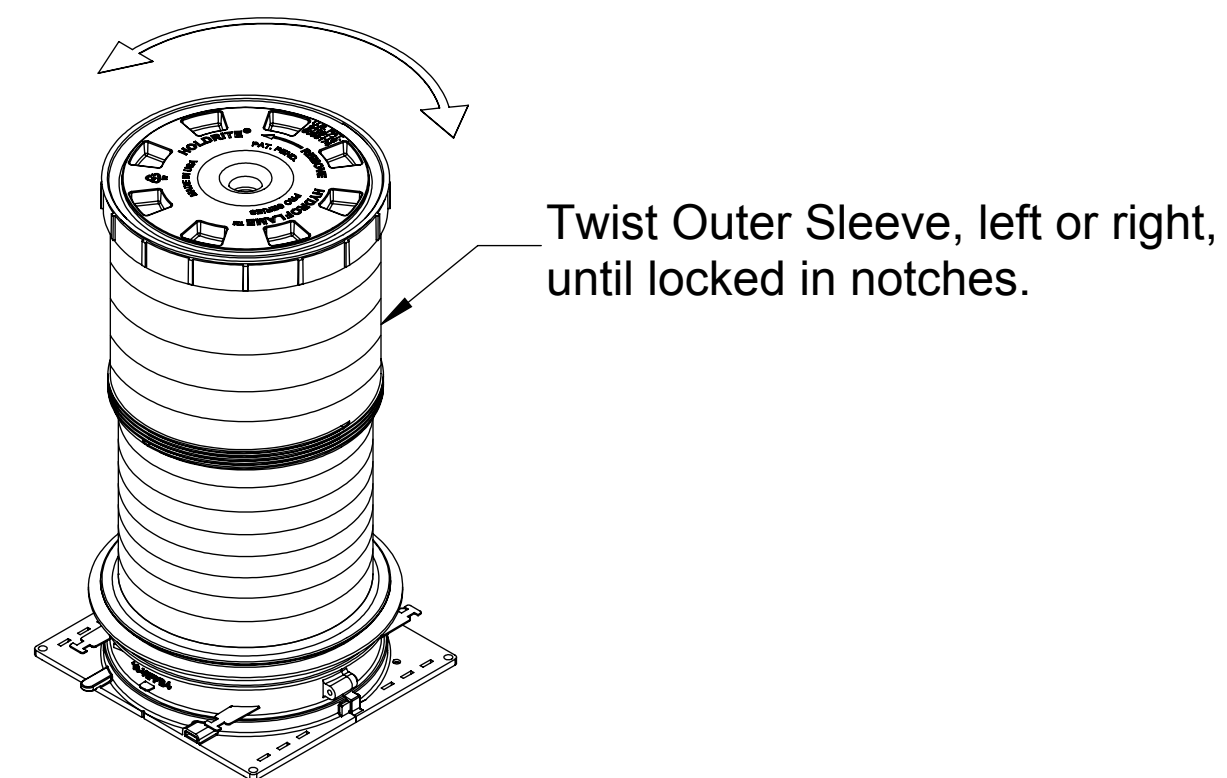
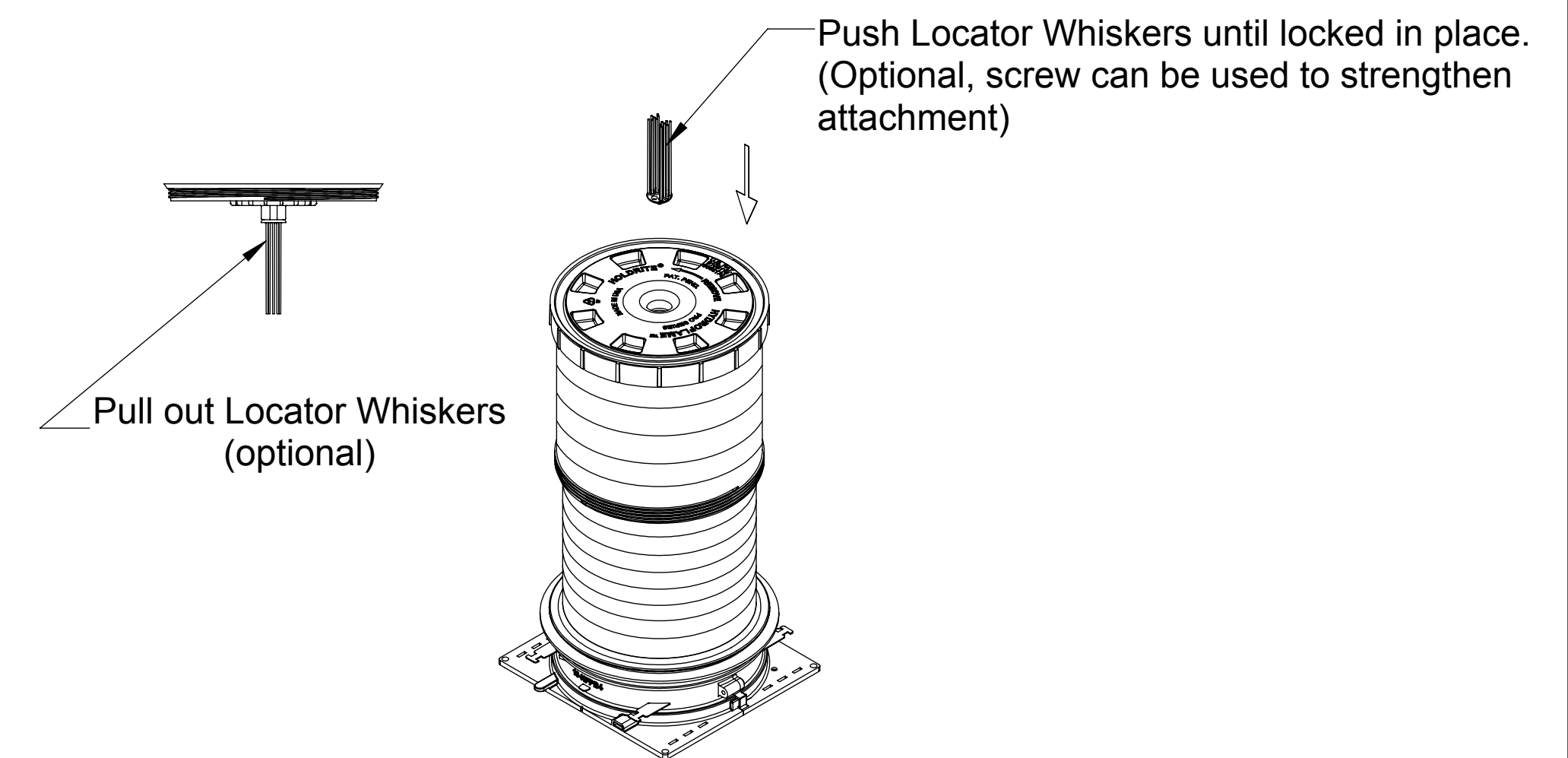


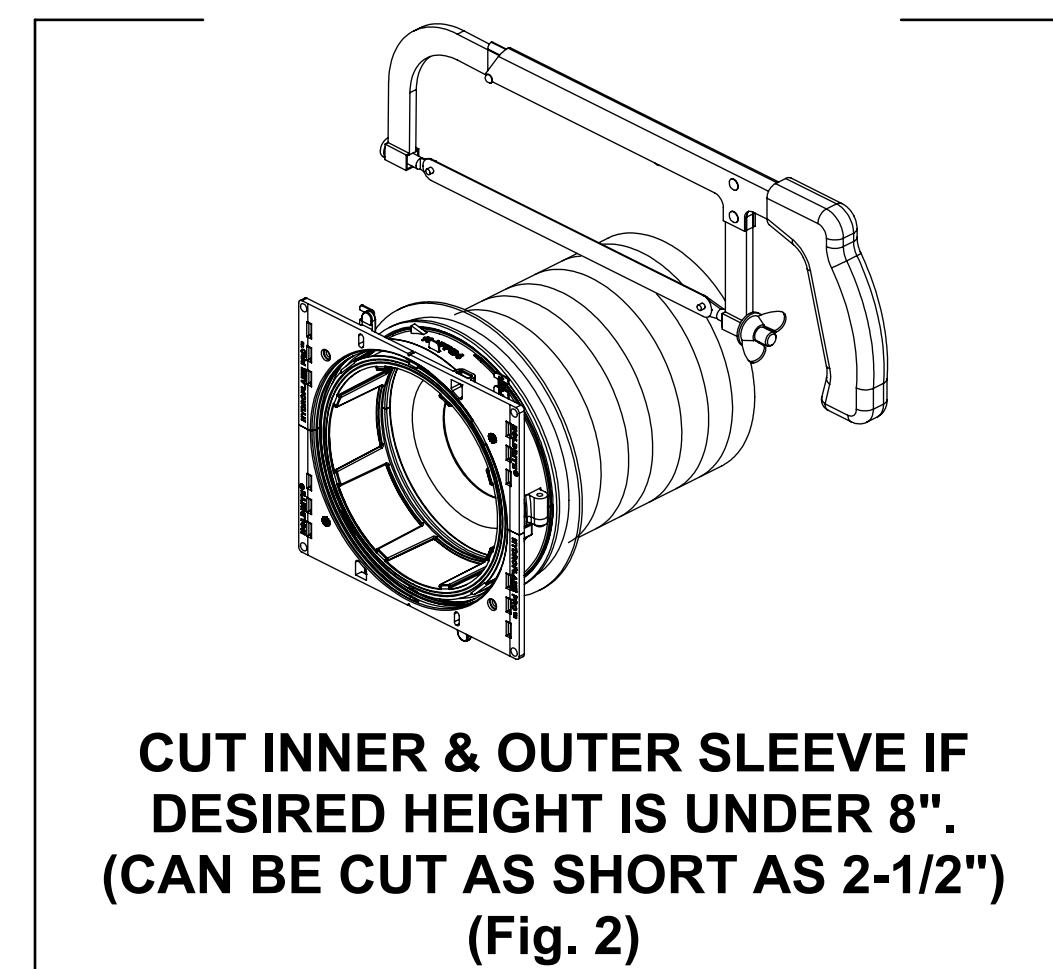
ADJUST TO DESIRED HEIGHT.
(Fig. 1)



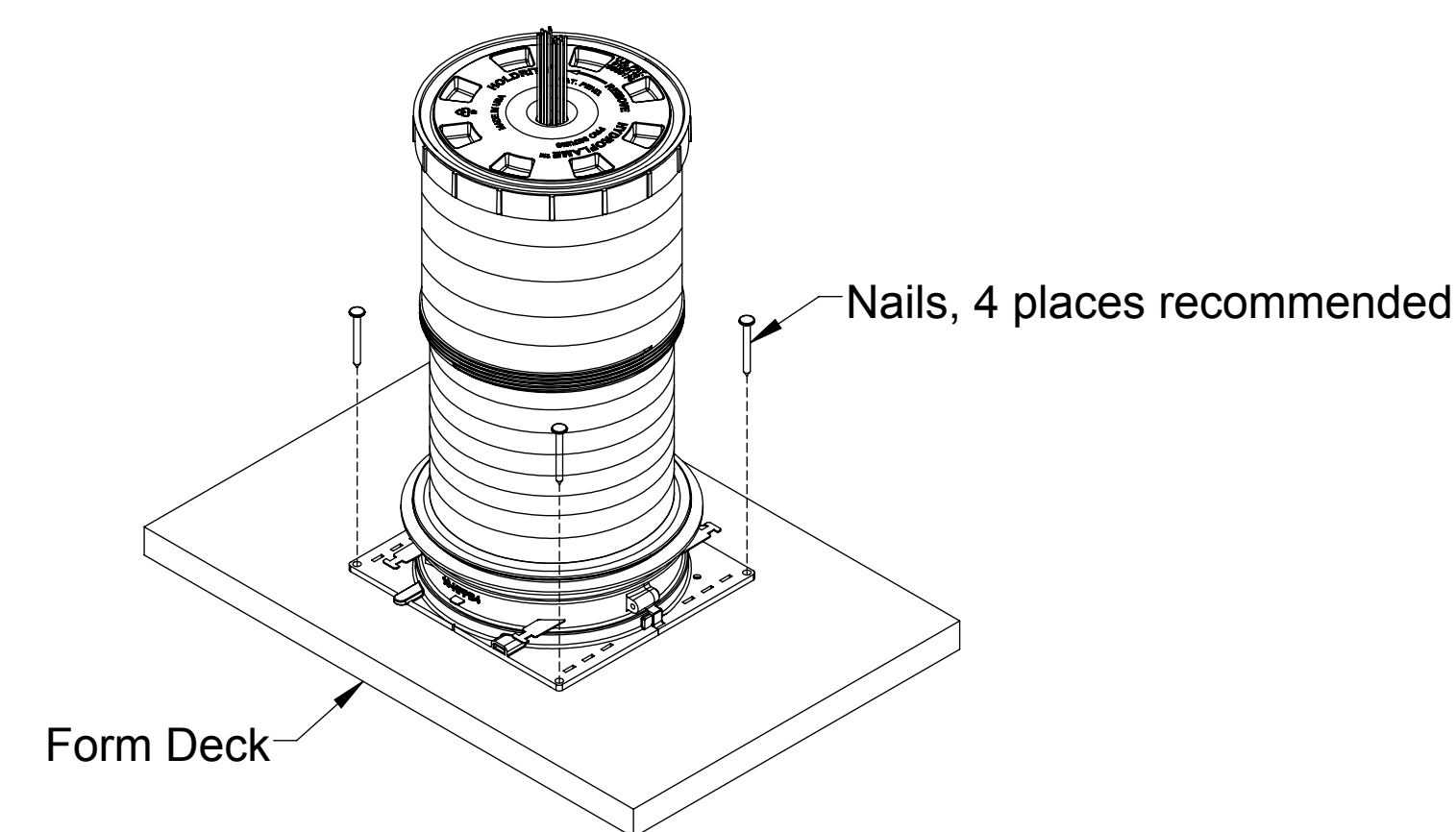
LOCK OUTER SLEEVE IN PLACE.
(Fig. 3)



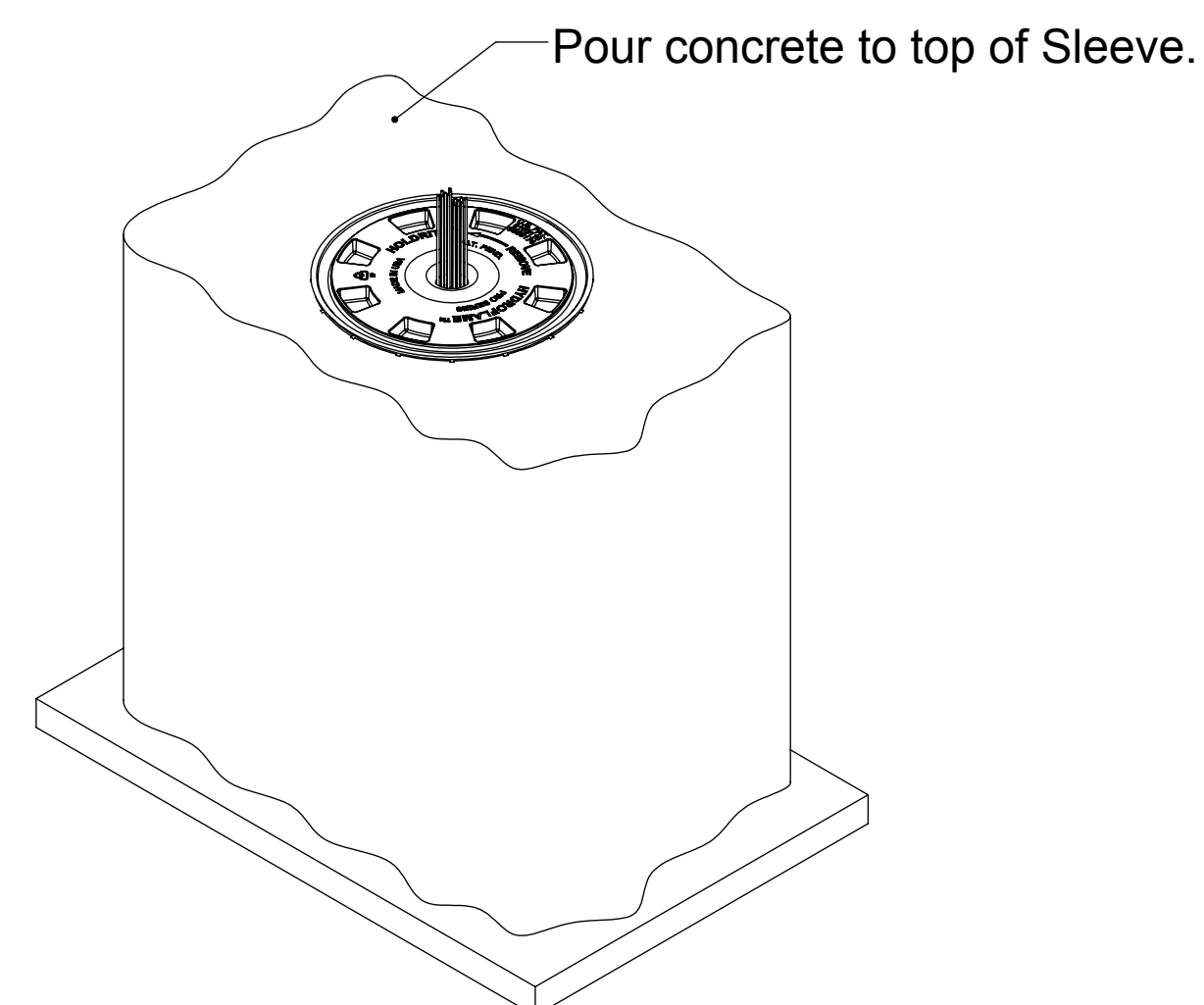
RE-INSTALL CAP & INSERT LOCATOR WHISKERS.
(Fig. 4)



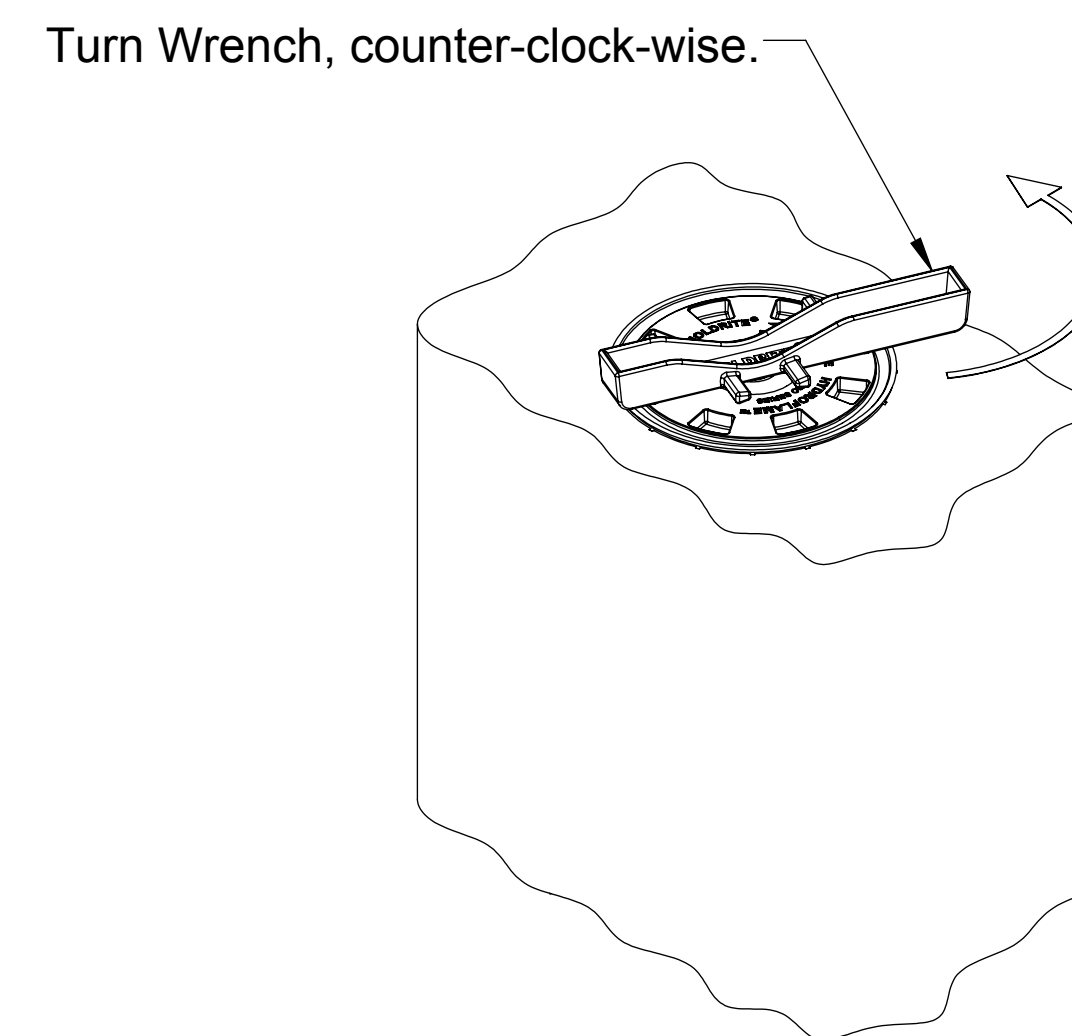
**CUT INNER & OUTER SLEEVE IF
DESIRED HEIGHT IS UNDER 8\"/>**



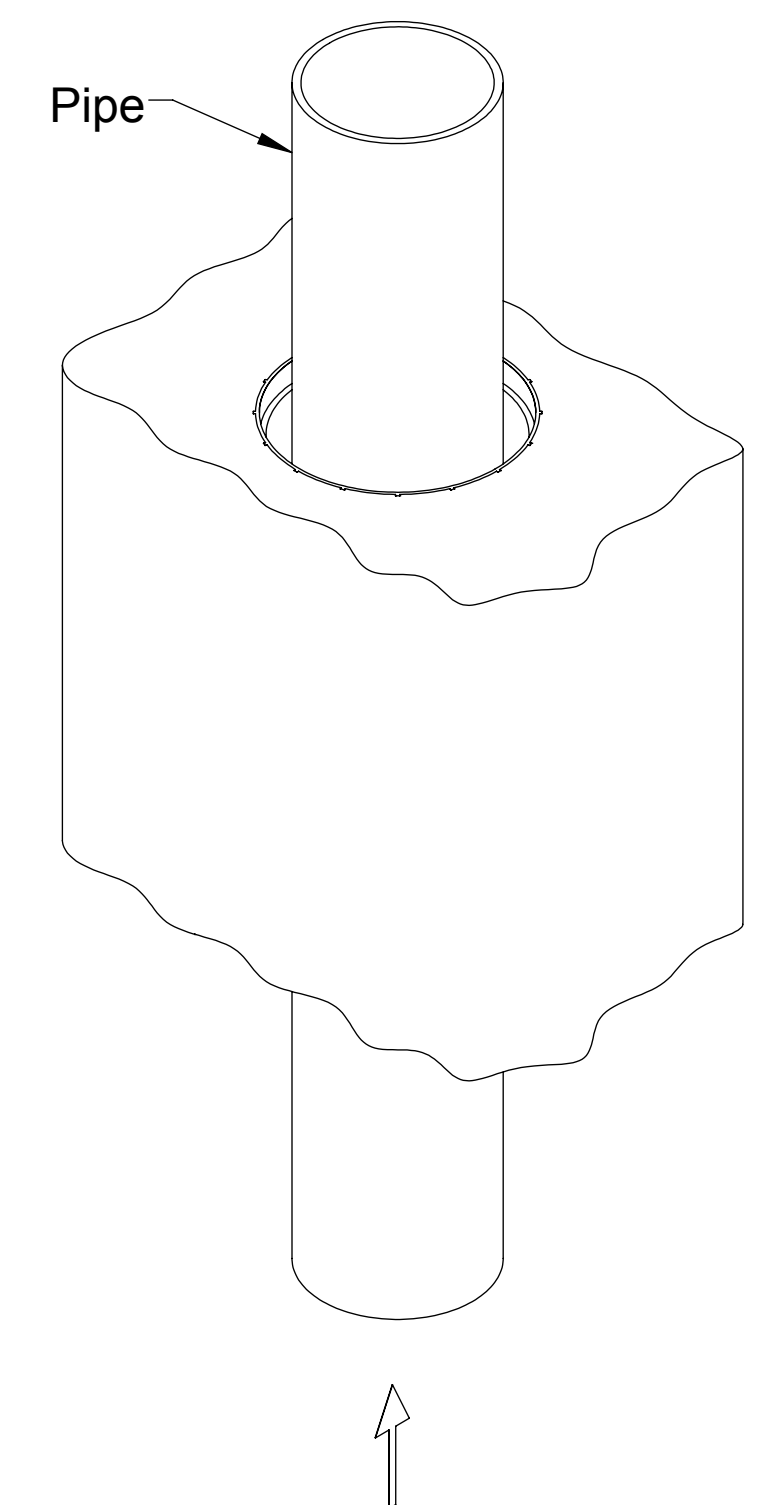
NAIL TO FORM DECK.
(Fig. 5)



POURED IN CONCRETE.
(Fig. 6)



**REMOVE CAP WITH HF WRENCH
OR BREAK-OUT WITH HAMMER.**
(Fig. 7)



INSTALL PIPE FROM BELOW.
(SOAPY WATER EASES PIPE INSERTION)
(Fig. 8)