



Advanced Heating
& Hot Water Systems

EVERLAST[®]

LIGHT DUTY COMMERCIAL

Stainless Steel Electric Water Heater

BUILT
TO LAST
LONGER

80, 100
& 115
Gallon Tanks

NO ANODE
RODS NEEDED
RESISTS
SCALE BUILD UP
LIGHT
WEIGHT



Industry Best Lifetime Warranty (with online registration)

EVERLAST®

Stainless Steel Electric Commercial Water Heater

The **Everlast Commercial Electric Water Heater** combines high quality stainless steel construction and energy efficient operation, providing long draws of hot water without consuming large amounts of energy. Durable components, low standby heat losses, high recovery rates, and the industry's strongest warranty make the Everlast Commercial Electric Water Heater an ideal choice for electric water heating needs.

THERMOSTAT AND HIGH LIMIT CONTROLS:

Commercial Temp: Min 120°F Max 181°F

HOT WATER CONNECTION:

Outlet connection on the top of the tank (with built in Heat Traps)

THE FINEST PROTECTION:

Laser welded through a concentrated heat source producing high quality, long lasting, 316L stainless steel tank construction (**lightweight**) - Superior corrosion resistance, eliminates the need for anode rods, protects against harsh water conditions for a lifetime of durability against leaks - Fantastic Limited Warranty

MINIMAL HEAT LOSS:

Heavy-duty insulation

INCOLOY & STAINLESS STEEL ELEMENTS:

Stainless steel screw plugs; Increases corrosion resistance for extended, longer element life



STANDARD FEATURES

- Stainless Steel Tank
- Heavy Duty Insulation
- Electrical Connection Box
- Limited LIFETIME Warranty for Light Commercial Unit (10 year warranty if not registered online)

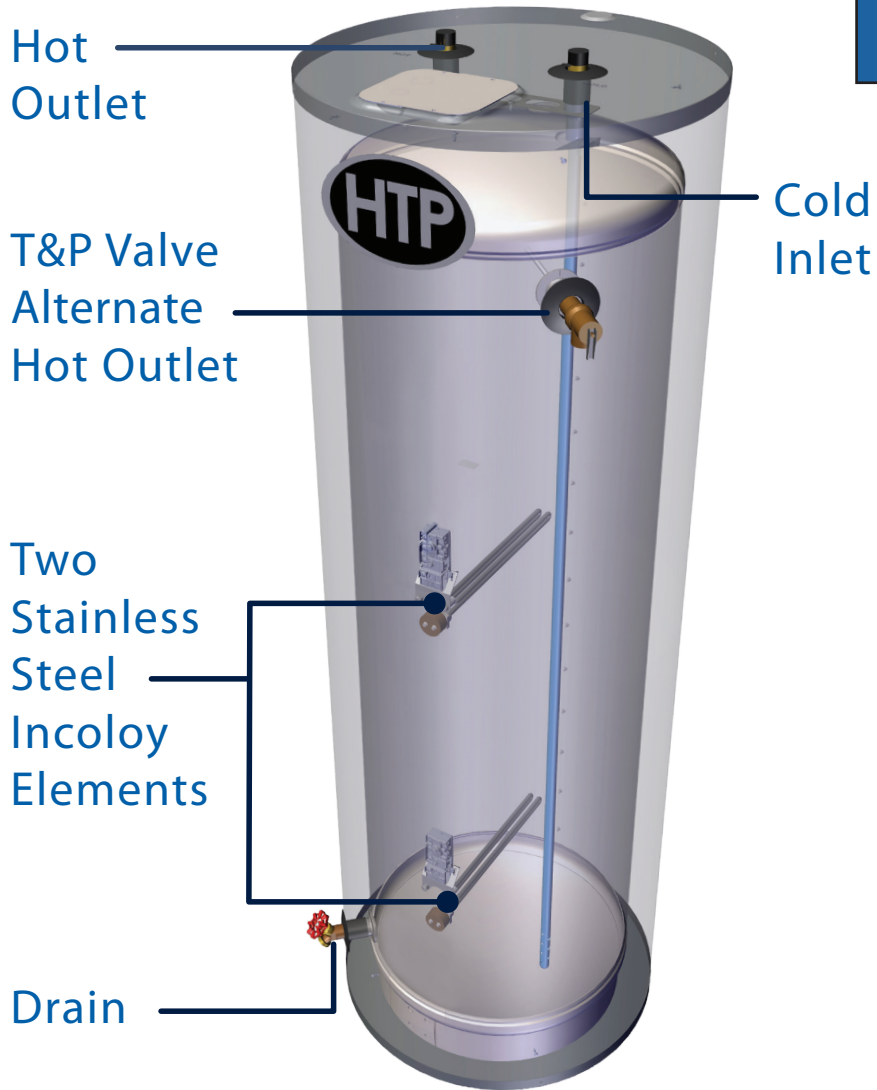
IN THE BOX

- T & P Relief Valve
- Installation Manual
- Brass Full Port Drain Valve

**NO ANODE
RODS NEEDED**
RESISTS
SCALE BUILD UP
**LIGHT
WEIGHT**

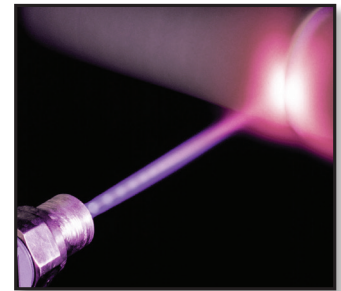


A Closer Look



The Inlet & Outlet have Built in Heat Traps, Keeping the Heat in the Tank for Greater Efficiency

316L Stainless Steel - Laser Welded Tank



Our Components are Made of Durable Materials:

Inlet and Outlet Nipples Constructed of Durable Brass

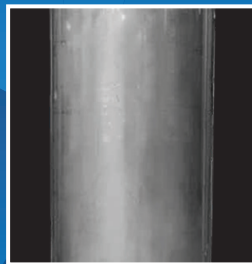
Stainless Steel Incoloy Elements

316 L Stainless Steel Tank Construction

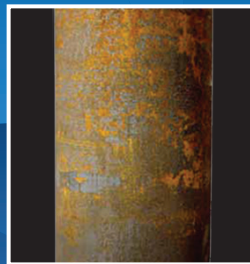
Made with High Grade 316L Stainless Steel Materials

The Advantages

Stainless Steel VS Glass-Lined



HTP's
Stainless Steel Tank
Lightweight



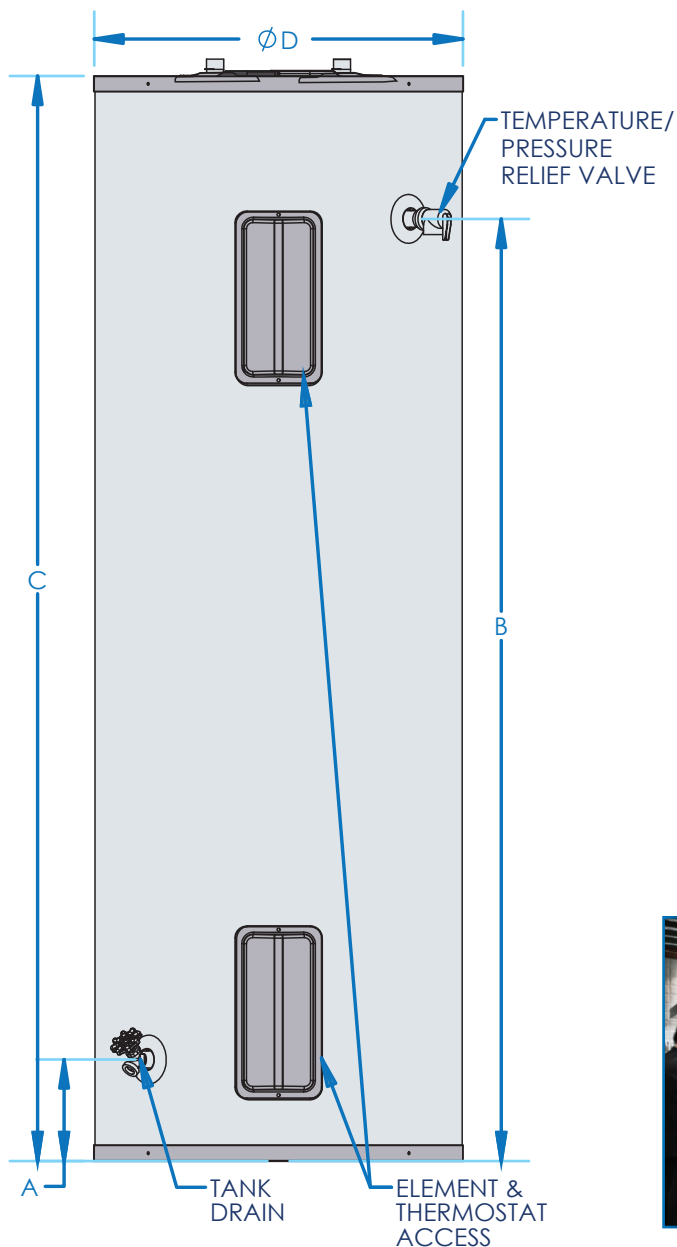
Top Competitor's
Glass-lined Tank
Very Heavy

Minimizes Scale Build Up
Prolongs Tank Life
No Need for Anode Rods
Lightweight Construction

NO Anode Rods Needed!

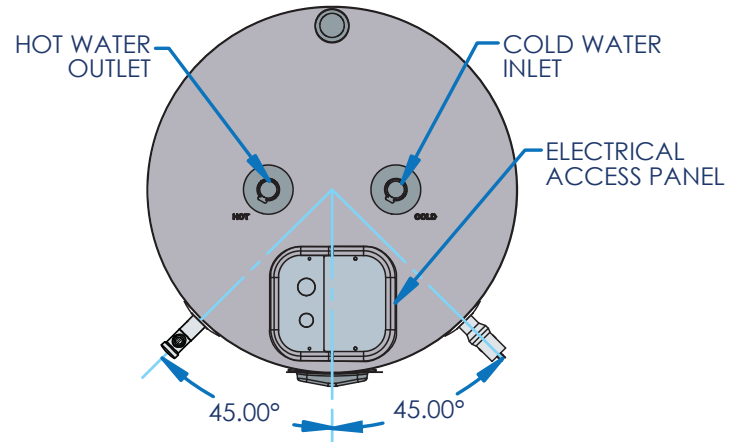
All coated tanks require anodes to delay the inevitable corrosion and tank failure. The average residential water heater lasts about 13 years. The Everlast stainless steel tank will outlast any coated steel tank in the market.





Specifications

The Inlet & Outlet have Built in Heat Traps, Keeping the Heat in the Tank for Greater Efficiency



Commercial



| SPECIFICATIONS AND DIMENSIONS | | | | | | | | WATER TEMPERATURE RATINGS | | |
|-------------------------------|------|-------|-------|-------|--------|----|-------------------|---------------------------|-------------------------|------------------|
| Models | Gal. | A | B | C | D | E | Hot / Cold Inlets | Minimum Delivered Temp. | Maximum Delivered Temp. | High Temp. Limit |
| EVC080C2X045 | 80 | 6.5" | 60" | 69" | 23.25" | 8" | 3/4" NPT | 120°F 48.8°C | 181°F 82.8°C | 200°F 93.3°C |
| EVC080C2X055 | | | | | | | | | | |
| EVC100C2X045 | 100 | 7.25" | 52" | 61" | 27" | | | | | |
| EVC100C2X055 | | | | | | | | | | |
| EVC115C2X045 | 115 | 7.25" | 60.25 | 70.5" | 27" | | | | | |
| EVC115C2X055 | | | | | | | | | | |

| Light Commercial Models | Wattage | Voltage | Safety Listing | First Hour Delivery | Recovery @ 90° F Rise | Thermal Efficiency | Shipping Weight |
|-------------------------|---------|---------|----------------|---------------------|-----------------------|--------------------|-----------------|
| EVC080C2X045 | 4500 | 240 | UL1453 | 84 Gallons | 20 Gallons | 98% | 151 lbs |
| EVC080C2X055 | 5500 | | | 89 Gallons | 25 Gallons | | |
| EVC100C2X045 | 4500 | 240 | | 87 Gallons | 20 Gallons | 98% | 206 lbs |
| EVC100C2X055 | 5500 | | | 92 Gallons | 25 Gallons | | |
| EVC115C2X045 | 4500 | 240 | | 105 Gallons | 20 Gallons | 98% | 224 lbs |
| EVC115C2X055 | 5500 | | | 110 Gallons | 25 Gallons | | |