



Advanced Heating
& Hot Water Systems

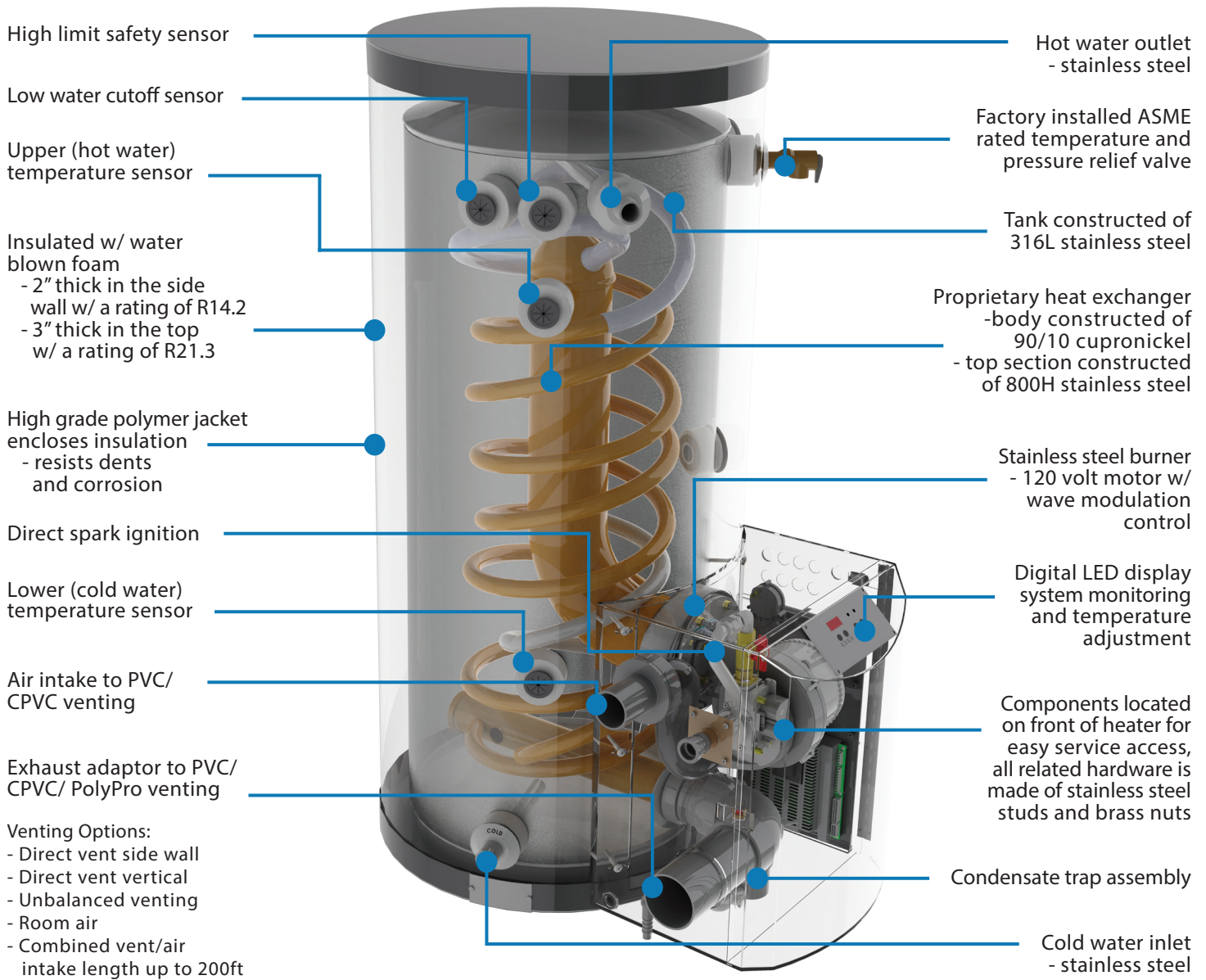
Phoenix

**316L Stainless Steel
Gas Fired Water Heater**



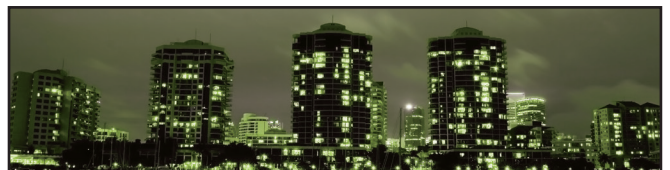
up to 96% Efficient Commercial Water Heater

SPECIFICATION GUIDE



MODEL	Input Modulation	First Hr. Rating	100°F Rise	T. Efficiency / UEF
PH100-55	35,000-100,000	169 GAL.	115	95% / .89
PH130-55	35,000-130,000	205 GAL.	148	94%
PH160-55	40,000- 160,000	245 GAL.	184	95%
PH199-55	40,000-199,000	295 GAL.	229	95%
PH100-80	35,000-100,000	189 GAL.	116	96% / .93
PH130-80	35,000-130,000	227 GAL.	150	95%
PH160-80	40,000-160,000	265 GAL.	184	96%
PH199-80	40,000-199,000	314 GAL.	229	95%
PH100-119	35,000-100,000	214 GAL.	117	96% / .90
PH130-119	35,000-130,000	257 GAL.	152	96%
PH160-119	40,000-160,000	295 GAL.	184	96%
PH199-119	40,000-199,000	335 GAL.	230	96%

Model	Input Modulation	First Hr. Rating	Thermal Efficiency
PH130-80S	35,000-130,000	227 GPH	N/A
PH199-80S	40,000-199,000	314 GPH	N/A
PH130-119S	35,000-130,000	257 GPH	N/A
PH199-119S	66,000-199,000	335 GPH	N/A
PH130-119SNHX	35,000-130,000	257 GPH	94%
PH199-119SNHX	66,000-199,000	335 GPH	95%
PH199-55SA	40,000- 199,000	295 GPH	95%



SUPERIOR STAINLESS STEEL CONSTRUCTION

Why Choose A Stainless Steel Tank?

HTP has produced more stainless steel tanks in North America since 1976, than any other company in the industry.



HTP'S UNIQUE HEAT EXCHANGER

- Durable Construction
- High Performance
- Excellent Heat Transfer Capabilities
- Self Cleaning: Eliminating Scale Build-up



316L STAINLESS STEEL TANK



Our Components are Made of Durable Materials:

Dip Tubes

Port Outlets

Heat Exchanger

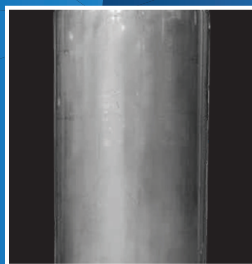
Tank Construction

Made with High Grade 316L and 800H Stainless Steel Materials.

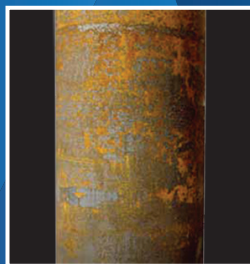


The Advantages

Stainless Steel vs. Glass-Lined



HTP's
119 GAL. Tank
405 LBS. (Ship. Weight)



Top Competitor's
119 GAL. Tank
555 LBS.

Eliminates Scale Build-up on HX
Prolongs Tank Life
No Need for Anode Rods
Light Weight Construction

Phoenix Water Heaters

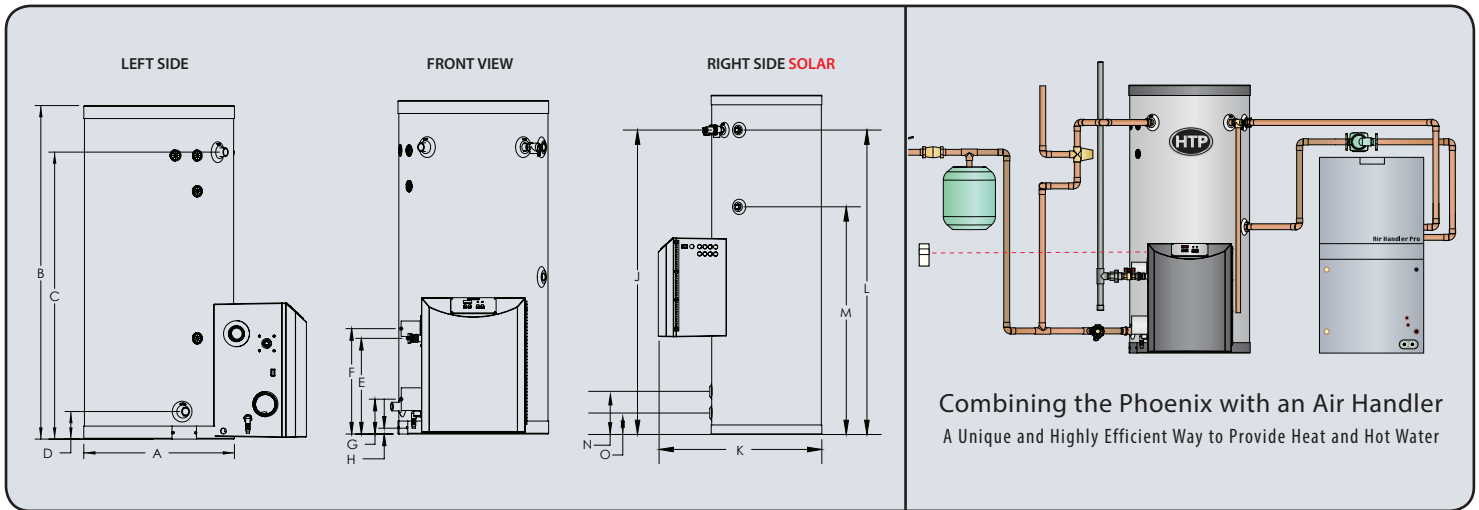
- UL/ULC listed
- exceed ASHRAE 90.1b-1992 efficiency requirements
- ANSI Z 21.10.3 certified
- comply w/ NOx emissions set forth in SCAQMD Rule 1146.2-1998
- factory assembled, test-fired, and adjusted for proper combustion parameters
- operate at altitudes up to 4,500 feet above sea level without additional parts or adjustments

Note: Due to variations by state in CSD-1 requirements, please consult with the factory for all controls required in your jurisdiction

NO Anode Rods Needed!
with HTP's 316 L
Stainless Steel Tanks

...Because They Are Built To Last!

DIMENSIONS & SPECIFICATIONS



PHOENIX WATER HEATER AND SANITIZER BOOSTER DIMENSIONS

	MODEL	GAL.	A	B	C	D	E	F	G	H	J	K	L	M		
	PH100-55/ PH130-55 PH160-55/ PH199-55	55	23"	52"	45"	5"	14-3/4"	16-1/4"	5-1/4"	1"	45"	34-1/4"	45"	27-1/2"		
	PH100-80/ PH130-80 PH160-80/ PH199-80	80	23"	72"	64"	5"	17"	18-1/2"	7-3/4"	3-1/4"	64"	34-1/4"	64"	29-3/4"		
	PH100-119/ PH130-119 PH160-119/ PH199-119	119	27"	74"	66-1/4"	7-1/2"	18-3/4"	21-1/2"	10-1/2"	5"	66-1/2"	38-1/2"	66-1/2"	31"		
	PH199-55SA	55	23"	52"	45"	5"	14-3/4"	16-1/4"	5-1/4"	1"	45"	34-1/4"	45"	27-1/2"		

PHOENIX SOLAR WATER HEATER DIMENSIONS

SRCC SYSTEM AVAILABLE	MODEL	GAL.	A	B	C	D	E	F	G	H	J	K	L	M	N	O
PH-80S	PH130-80S/ PH199-80S	80	23"	72"	65"	5-3/4"	36"	37-1/2"	27"	22-1/2"	64-3/4"	34"	64-3/4"	48-3/4"	9-3/4"	5-1/4"
PH-119S	PH130-199S/ PH199-119S	119	27"	74"	66"	7-1/4"	36-3/4"	38-1/4"	27-1/4"	23-1/4"	66-1/4"	38-1/4"	66-1/4"	49-1/4"	11-1/2"	7"

PHOENIX WATER HEATER AND SANITIZER BOOSTER SPECIFICATIONS

MODEL	BTU's	AIR INTAKE/ EXHAUST VENT	INLET/ OUTLET	AUXILIARY CONN.	GAS LINE CONN.	SYSTEM RELIEF PIPE	SHIPPING WEIGHT	MAX. TEMP LIMIT	T. EFFICIENCY / UEF
PH100-55	100,000	2"	1" NPT	1" FNPT	3/4"	3/4"	175 LBS	160 F	95% / .89
PH130-55	130,000	2"	1" NPT	1" FNPT	3/4"	3/4"	175 LBS	160 F	94%
PH160-55	160,000	3"	1" NPT	1" FNPT	3/4"	3/4"	175 LBS	160 F	95% /
PH199-55	199,000	3"	1" NPT	1" FNPT	3/4"	3/4"	175 LBS	160 F	95%
PH100-80	100,000	2"	1-1/2" NPT	1" FNPT	3/4"	3/4"	235 LBS	160 F	95% / .93
PH130-80	130,000	2"	1-1/2" NPT	1" FNPT	3/4"	3/4"	235 LBS	160 F	95%
PH160-80	160,000	3"	1-1/2" NPT	1" FNPT	3/4"	3/4"	235 LBS	160 F	96%
PH199-80	199,000	3"	1-1/2" NPT	1" FNPT	3/4"	3/4"	235 LBS	160 F	95%
PH100-119	100,000	2"	1-1/2" NPT	1" FNPT	3/4"	3/4"	405 LBS	160 F	96% / .90
PH130-119	130,000	2"	1-1/2" NPT	1" FNPT	3/4"	3/4"	405 LBS	160 F	96%
PH160-119	160,000	3"	1-1/2" NPT	1" FNPT	3/4"	3/4"	405 LBS	160 F	96%
PH199-119	199,000	3"	1-1/2" NPT	1" FNPT	3/4"	3/4"	405 LBS	160 F	96%
PH199-55SA	199,000	3"	1" NPT	1" FNPT	3/4"	3/4"	175 LBS	184 F	95%

PHOENIX SOLAR WATER HEATER SPECIFICATIONS

SRCC SYSTEM AVAILABLE	MODEL	BTUH	AIR INTAKE/ EXHAUST VENT	INLET/ OUTLET	AUXILIARY CONN.	GAS LINE CONN.	SYSTEM RELIEF PIPE	SHIPPING WEIGHT	MAX. TEMP LIMIT
PH-80S	PH130-80S PH130-119S	130,000	2"	1"NPT	1"	3/4"	3/4"	245 LBS	160 F
PH-119S	PH199-80S PH199-119S	199,000	3"	1"NPT	1"	3/4"	3/4"	415 LBS	160 F

Note: All units are compatible with natural gas or liquid propane, but must be specified upon placing an order.

STANDARD FEATURES

- Up to 96% Thermal Efficiency
- Modulating Burner
- 5:1 Turndown Ratio
- Vents in PVC, CPVC, Stainless Steel, ULC S636
- Limited Warranty
- 7 Year Residential
- 3 Year (5 Year Option Available) Commercial

WHAT'S IN THE BOX

- Intake PVC Tee w/ Screens
- Exhaust PVC Coupling w/ Screens
- Installation Manual
- Solar Addendum (Solar Models Only)
- LP Conversion Kit (Natural Gas Models Only)

OPTIONAL EQUIPMENT

- Outdoor Sensor
- 2", 3" PVC Concentric Vent Kit
- 3", 4" Stainless Steel Outside Termination Vent Kit
- Condensate Neutralizer
- PC Connection Cable w/ Software
- Sanitizer Booster Kit

ULTRA
Low NOx
Emissions

In accordance with our company policy of ongoing product improvement, HTP Inc. reserves the right to make changes without prior notice.

