

PLUMBING SOLUTIONS

- Replaces broken or damaged adjustable ring on closet flange



Installation Instructions

1. Remove the damaged closet flange ring.
2. Slide the protruding lip on the interior edge of the Repair Ring into the grooved channel of the flange body, lay the ring flat on the floor then rotate the ring until the closet bolt slots are in the desired position.
3. Using a screwdriver, bend the Repair Ring "claws" into the grooved channel of the closet flange body to clamp it in place.
4. Insert the toilet bolts in the closet bolt slots.
5. Fasten screws to the floor through the holes located on the ring and on the "claws". Re-install toilet.

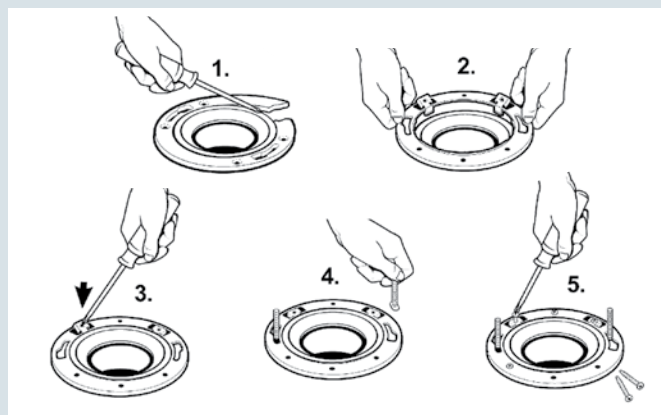
Stainless Steel Closet Flange Repair Ring

Features

- One-piece construction
- Replaces both metal and plastic closet flange rings with an inside diameter greater than 5"
- Grade 304-2B stainless steel

Benefits

- Stronger than two-piece repair rings
- Will not rust (paint coated flanges are susceptible to rust)
- Paint coating not required
- Adjustable for ease of installation



PART #	MATERIAL	DESC.	CTN. QTY.
Closet Flange Repair Ring			
133608	Stainless Steel	4" x 3"	15

Fits most 4" x 3" Closet Flanges with adjustable rings (metal or plastic)



Plumbing Products for
the Construction Industry
ipexamerica.com

Eastern U.S. Customers
Tel: (289) 881-0120
Toll Free: 1-800-463-9572
Fax: (905) 844-0826

Western U.S. Customers
Tel: (303) 373-1918
Toll Free: 1-888-461-5307
Fax: (303) 373-1923