



JAY R. SMITH MFG. CO.
MEMBER OF MORRIS GROUP INTERNATIONAL
POST OFFICE BOX 3237
MONTGOMERY, ALABAMA 36109-0237 (USA)
TEL: 334-277-8520 FAX: 334-272-7396 www.jrsmith.com



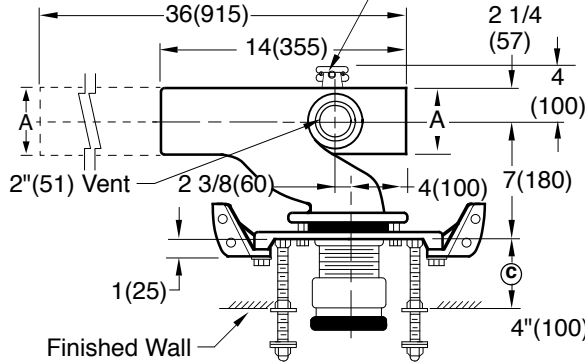
LOCATION

ADJUSTABLE FIXTURE SUPPORTS FOR SIPHON JET WATER CLOSETS SHALLOW ROUGH-IN TYPE

NO-HUB HORIZONTAL FITTINGS

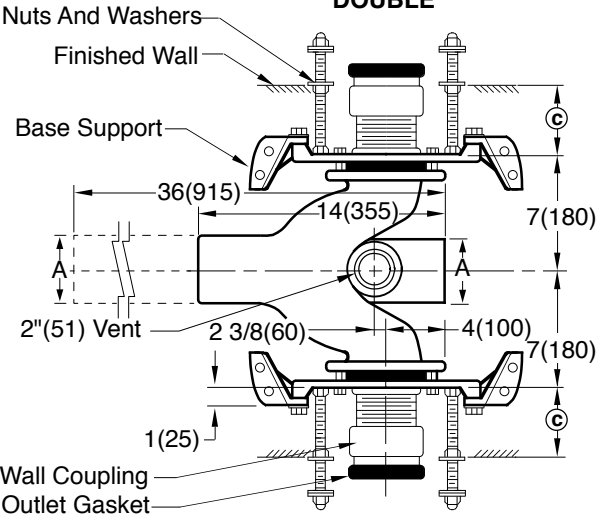
SINGLE

Rear Support Lug and -M51 Anchor
Foot Assembly Regularly Furnished.



**Fig. 0211RY
Top View**

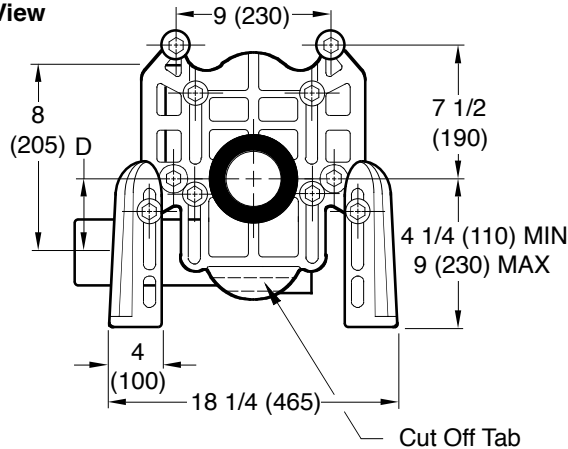
DOUBLE



**Fig. 0211DY
Top View**

NOTE: Base support must be
securely anchored to floor (with
four 1/2" (13) bolts provided by
contractor).

NOTE: Dimensions shown in
parentheses are in millimeters.



Front View

The water closet gasket regularly
furnished is made of molded
neoprene and designed to fit water
closet outlet dimensions and
configurations shown in ANSI
Standard A112.19.2M-1995, Figure
13B. If gasket is not found to be
compatible to fixture due to
nonconformance of said fixture to
ANSI A112.19.2M, then fixture
manufacturer shall be consulted for a
suitable gasket recommendation. Jay
R. Smith assumes no liability for
connections to fixtures which do not
conform to these standards.

- ☐ Fig. 0211LY NO-HUB Left Hand
- ☐ Fig. 0211RY NO-HUB Right Hand
- ☐ Fig. 0211DY NO-HUB Double
- ☐ Fig. 0221LY NO-HUB Left Hand Long Barrel
- ☐ Fig. 0221RY NO-HUB Right Hand Long Barrel
- ☐ Fig. 0221DY NO-HUB Double Long Barrel

© dimension = 4" (100) (regularly furnished)
consisting of nipple and Adjus-to-Wall
coupling permitting adjustment from 3" (76)
min. to 4" (100) max.

A SIZE	D	
	MIN	MAX
4 (100)	5/8 (16)	3 3/8 (86)

WEIGHT
POUNDS

VOLUME
CUBIC FEET

FIGURE NUMBER

0211Y, 0221Y

A 12-5-14 Added 0221Y

TBW CR

REV. DATE DESCRIPTION BY CKD. BY