

NPN Series



NPN-Universal & NPN-Exterior Premium Tankless Water Heaters

Navien
innovation
now in
non-condensing
tankless



NaviLink Wi-Fi remote control system...
available as an add-on accessory.



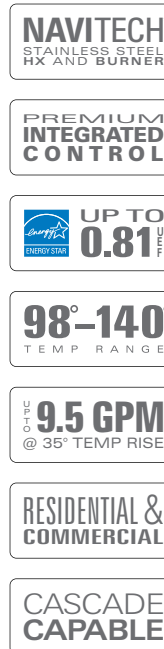
NON-CONDENSING TANKLESS REINVENTED

NPN NAVIEN PREMIUM NON-CONDENSING TANKLESS WATER HEATERS

No one has put more non-condensing ingenuity into tankless than Navien

The new Navien NPN series is the first and only non-condensing tankless water heater series that offers a durable stainless-steel heat exchanger and a patented stainless steel burner design, all with Navien's dedication to advanced engineering, elegant design and exceptional product quality and support.

- Patented NaviTech™ stainless steel heat exchanger and stainless steel burner with precision control flame technology for eco-friendly low NO_x emissions comparable to condensing burners
- 0.81 Uniform Energy Factor (UEF) for all models
- Choice of universal indoor/outdoor or outdoor only operation
- Strong residential and commercial warranties
- NaviVent™ concentric 3" x 5" venting
- Units available in either Natural Gas (NG) or Liquid Propane (LP) gas



NPN-Universal
Indoor/outdoor

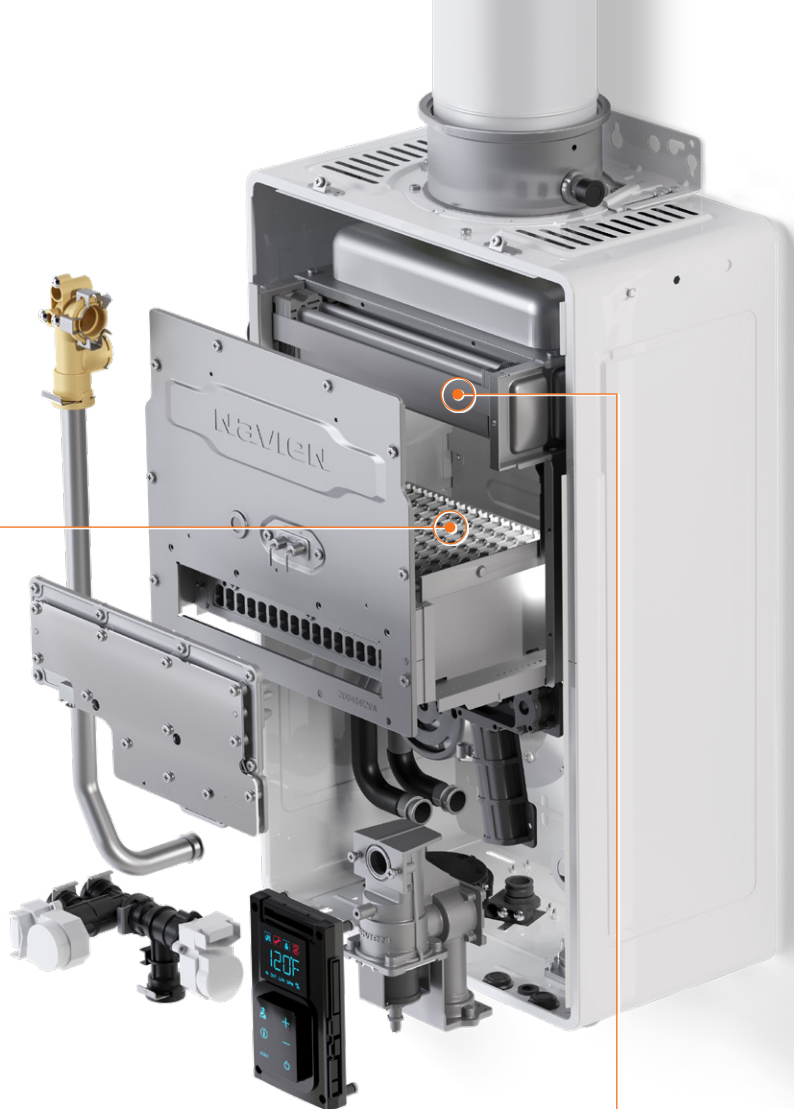
NaviTech™ PATENTED NON-CONDENSING STAINLESS STEEL TECHNOLOGY

Navien NPN stainless steel heat exchangers and burners give you unmatched performance and durability

N O N - C O N D E N S I N G T A N K L E S S R E I N V E N T E D



NPN-Exterior
Outdoor only



**Patented
NaviTech™
stainless steel burner**
with precision control
flame technology for eco-friendly
low NO_x emissions comparable
to condensing burners.



**Exclusive NaviTech™
stainless steel heat
exchanger.** NPN is the
first non-condensing unit
with a stainless steel heat exchanger. The corrosion
resistant heat exchanger is another innovation created
from Navien's industry leading NPE condensing tankless
stainless steel technology.

COMPARE OUR ADVANTAGES TO OTHER NON-CONDENSING TANKLESS

Flexible Navien NPN-U universal indoor or outdoor unit and **NPN-E** exterior dedicated outdoor unit. NPN-E outdoor models also feature remote control and built-in button controls for easy service.



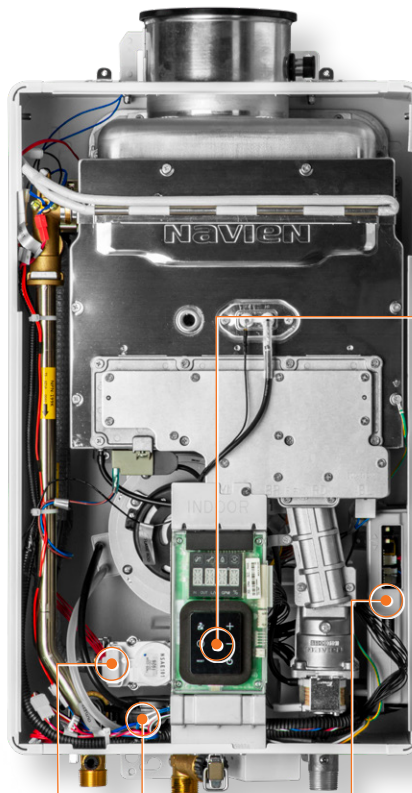
NPN-U universal indoor configuration.



NPN-U universal with vent cap for outdoor use.



NPN-E exterior outdoor use only.



• **NPN series integrated control panel** allows you to adjust water temperature, operation status and troubleshooting.



NPN-U

NPN-E

• **Circuitry with built-in recirculation control and software.**
No need to add separate controller saving installation time and money.



• **Built-in Air Pressure Sensor (APS)** monitors and maintains air/gas pressure ratio during operation. Also ensures consistent DHW output during partial air blockage.



• **Built-in Water Adjustment Valve (WAV) and Mixing Valve** controls flow to maintain setpoint and stabilizes temperature during flow changes.



N O N - C O N D E N S I N G T A N K L E S S R E I N V E N T E D



Approved for mobile/manufactured homes.

Navien NPN Series is the perfect domestic hot water system for eco-friendly tiny houses to larger high-tech homes.



Space saving and lighter weight design.

These sleek wall-hung units use much less space and are substantially lighter than traditional tank water heaters.



Low noise levels.

Installations in or near media rooms, recreation rooms or any living areas of the house are possible with the quiet running NPN water heaters.



Cascading capability.

For increased domestic hot water flow demand, the NPN can be cascaded with another NPN unit.



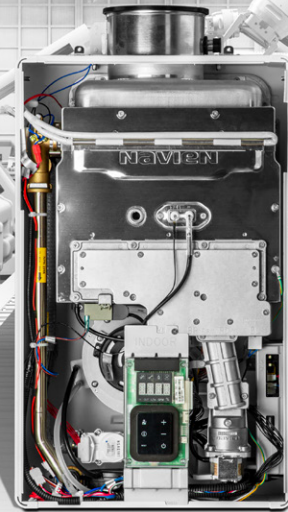
Pin-to-pin design.

Matches configuration of other tankless models for easy retrofit installation.



Low NO_x.

The NPN series non-condensing eco-friendly stainless steel burner emits very low NO_x levels, like our industry leading NPE series condensing tankless water heaters.



90%+ OF NPN IS
DESIGNED
AND BUILT BY NAVIENT

Navient is the only non-condensing tankless water heater manufacturer to design and produce stainless steel heat exchangers and high efficiency NaviTech™ burners. Instead of assembling parts from various suppliers, we engineer and produce 90% of the components in our NPN series units and use advanced robotics to assure manufacturing integrity.



NPN

WATER HEATER ACCESSORIES



**PeakFlow™
anti-scale system**
GXXX001725
**PeakFlow™
replacement media**
GXXX001726
**PeakFlow™
replacement media**
GXXX001327



**Outdoor
vent cap kit
(NPN-U only)**
30023991A



**Plumb easy
valve 3/4" with relief valve**
30009323A



**Pipe cover
NPN series**
30024017A



**Remote
controller
(optional for
NPN-U models)**
30022717A



**Recess box
(NPN-E only)**
30023550A
(Lock not included)



Cascade cable
GXXX000546
**External
pump wire**
GXXX001319



NaviLink™

Wi-Fi remote control

This optional accessory enables you to control temperatures remotely, access usage data and receive diagnostic notifications from your smart phone or tablet.



**NaviLink™
Wi-Fi control**
PBCM-AS-001



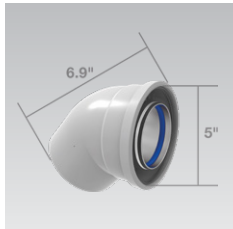
**H2Air™ kit
AHU optimizer**
PNBD-000001



**HotButton™
control kit**
PZZZ-00046
Wall plate
GXXX001427
Push button
GXXX001426



3" x 5" CONCENTRIC VENTING ACCESSORIES



Elbow
80-125 mm 45°
GXXX001894



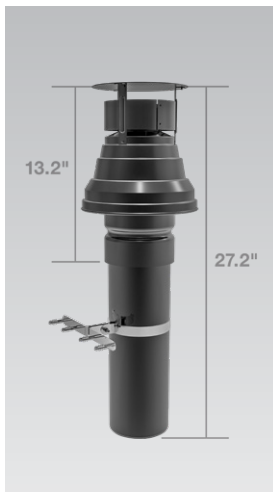
Elbow
80-125 mm 90°
GXXX001895



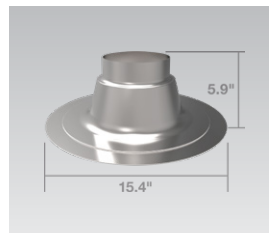
Condensate trap kit
GXXX001952



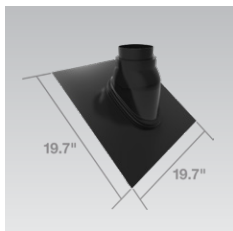
Metal wall strap
GXXX001902



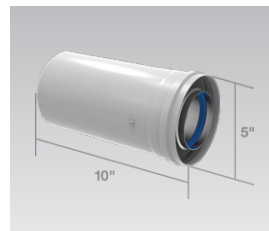
Concentric roof termination
13" (330mm)
GXXX001893



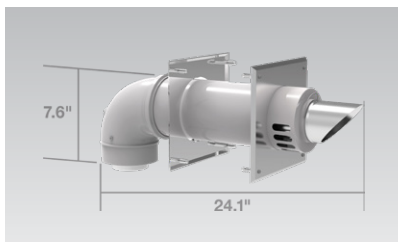
Flat roof flashing
GXXX001900



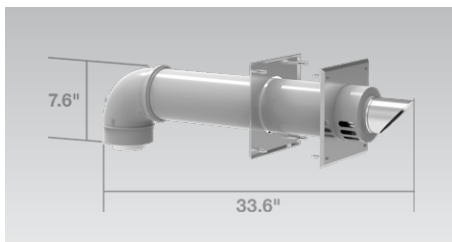
Adjustable roof flashing
GXXX001901



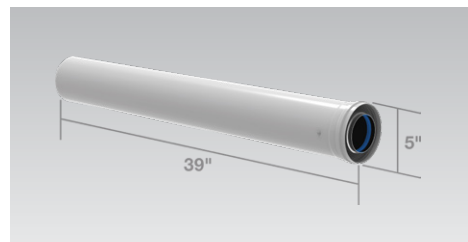
Vent pipe extension
10" (254mm)
GXXX001896



Sidewall termination kit
11.5" (292mm)
GXXX001891



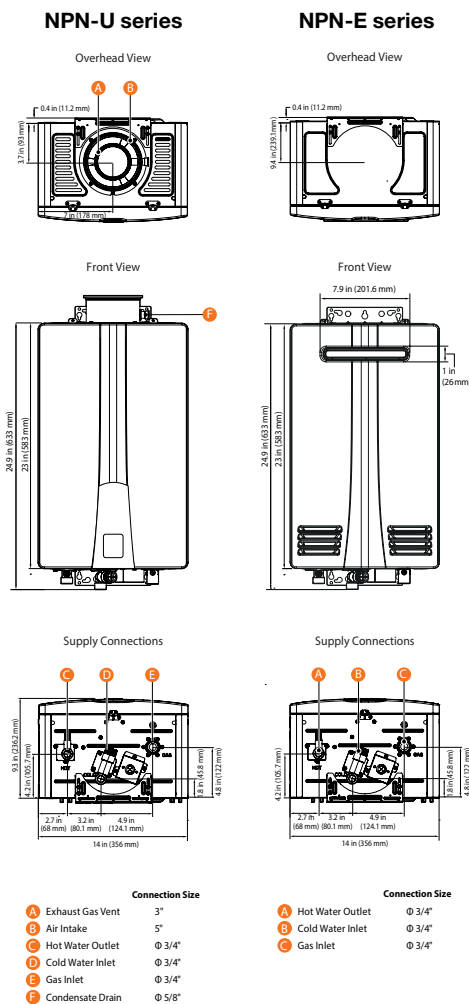
Sidewall termination kit
21" (533mm)
GXXX001892



Vent pipe extension
39" (991mm)
GXXX001897



Dimensions



Ratings & specifications

| Item | | NPN-Universal Model | | | NPN-Exterior Model | | |
|--|--------------------------|--|---------------------------|---------------------------|--|---------------------------|---------------------------|
| | | NPN-160U | NPN-180U | NPN-199U | NPN-160E | NPN-180E | NPN-199E |
| Heat capacity (input) natural gas/propane gas | | 10,700–160,000 (BTU/H) | 10,700–180,000 (BTU/H) | 10,700–199,900 (BTU/H) | 10,700–160,000 (BTU/H) | 10,700–180,000 (BTU/H) | 10,700–199,900 (BTU/H) |
| Uniform Energy Factor for NG & LP | | 0.81 UEF | | | | | |
| Flow rate (DHW) | 35°F (19°C) temp rise | 7.6 GPM (28.8 L/m) | 8.5 GPM (32.2 L/m) | 9.5 GPM (36.0 L/m) | 7.6 GPM (28.8 L/m) | 8.5 GPM (32.2 L/m) | 9.5 GPM (36.0 L/m) |
| | 45°F (25°C) temp rise | 5.8 GPM (22.3 L/m) | 6.6 GPM (25.0 L/m) | 7.4 GPM (28.0 L/m) | 5.8 GPM (22.3 L/m) | 6.6 GPM (25.0 L/m) | 7.4 GPM (28.0 L/m) |
| | 67°F (37°C) temp rise | 4.0 GPM (15.1 L/m) | 4.5 GPM (17.0 L/m) | 5.0 GPM (18.9 L/m) | 4.0 GPM (15.1 L/m) | 4.5 GPM (17.0 L/m) | 5.0 GPM (18.9 L/m) |
| Dimensions | | 14.0" W x 23.0" H x 9.3" D | | | | | |
| Weight | | 55.0 lbs. (25 kg) | 60.0 lbs. (27 kg) | 60.0 lbs. (27 kg) | 55.0 lbs. (25 kg) | 60.0 lbs. (27 kg) | 60.0 lbs. (27 kg) |
| Installation type | | Indoor or outdoor wall-hung (vent kit option for outdoor) | | | Only outdoor wall-hung | | |
| Venting type | | Concentric | | | No venting (outdoor installation only) | | |
| Ignition type | | Electronic ignition | | | | | |
| Water pressure | | 15–150 PSI | | | | | |
| Natural gas supply pressure (from source) | | 3.5" WC–10.5" WC | | | | | |
| Propane gas supply pressure (from source) | | 8" WC–13" WC | | | | | |
| Natural gas manifold pressure (min-max) | | 0.70" WC, 2.83" WC | 0.53" WC, 2.25" WC | 0.53" WC, 2.81" WC | 0.69" WC, 3.23" WC | 0.53" WC, 2.38" WC | 0.52" WC, 2.99" WC |
| Propane gas manifold pressure (min-max) | | 1.38" WC, 5.93" WC | 1.31" WC, 5.28" WC | 1.31" WC, 6.55" WC | 1.35" WC, 6.34" WC | 1.28" WC, 5.39" WC | 1.28" WC, 6.61" WC |
| Minimum flow rate | | 0.5 GPM (1.9L/m) | | | | | |
| Connection sizes | Cold water inlet | 3/4" NPT | | | | | |
| | Hot water outlet | | | | | | |
| | Gas inlet | | | | | | |
| Power supply | Main supply | 120V AC, 60 Hz | | | | | |
| | Normal | 90 W | 88 W | 120 W | 90 W | 88 W | 120 W |
| | Standby | 4 W | | | | | |
| | Anti-frost | 114 W | | | | | |
| | External pump | < 150 W, 1.5 A | | | | | |
| | Fuse | 5.0 A | | | | | |
| Materials | Casing | Cold rolled carbon steel | | | | | |
| | Heat exchanger | Stainless steel | | | | | |
| Safety devices | | Flame rod, APS, overheat protection, ignition operation detector, water temperature high limit switch, power surge fuse | | | | | |

Navien reserves the right to change specifications at any time without prior notice. Please refer to www.NavienInc.com to verify you have the most current information.



Warranty

| Application | Labor | Parts | Heat Exchanger |
|----------------------------------|---|--------|----------------|
| Residential | Standard | 1 year | 5 years |
| | Uncontrolled Recirculation ² | 1 year | 3 years |
| Commercial or Combi ¹ | Standard | 1 year | 5 years |
| | Uncontrolled Recirculation ² | 1 year | 3 years |

¹Combi refers to a combination potable water and space heating application. Water heaters cannot be used in space heating only applications.

²Uncontrolled-Recirculation: External pumps configured to circulate continuously through the water heater are subject to the uncontrolled recirculation warranty terms. An aquastat is the minimum pump control requirement for DHW or storage tank recirculation in order to maintain the full controlled recirculation warranty.

For complete details please refer to the full warranty at NavienInc.com.



We are @navieninc everywhere.

Follow us to find out the latest updates on Navien products, training, trade shows, contests, & more.

Navien Inc., 20 Goodyear, Irvine, CA 92618 800-519-8794 NavienInc.com



N O N - C O N D E N S I N G T A N K L E S S R E I N V E N T E D