

SUBMITTAL SHEET

JOB NAME	ITEM TAG
JOB LOCATION	PART NUMBER
CONTRACTOR	DATE
ENGINEER APPROVAL	DATE

SELF-DRAINING HOSE BIBB VACUUM BREAKER

T-557 and T-557C

Female inlet x male outlet garden hose thread connections permit easy connection to the valve and hose ends.

Full-perimeter atmospheric vent design assures consistent, positive backflow prevention in harsh, dirty conditions.

Durable forged brass construction withstands the elements and delivers years of protection and hassle-free operation.

Uni-directional flow. Automatic vacuum interruption prevents backsiphonage. Not for continuous-pressure operation such as sprinkler timers or irrigation applications.

Equipped with a break-away set screw for tamper-resistant installation onto the valve.

Available in plain (un-plated) brass or polished chrome-plated finishes.

- Certified by IAPMO to ASSE Standard 1011 - 2004
- Tested and certified in compliance to CSA Standard B64.2.2 - 2011
- UPC / IAPMO approved and in compliance with the National Plumbing Code of Canada
- End connections comply with ANSI / ASME B1.20.7
- Manufactured in an ISO accredited facility



Working Pressure, Non Shock (PSI)

Cold working pressure (CWP): 125 PSI

Saturated steam (WSP): Not suitable for steam service

Maximum service temperature: 180° F

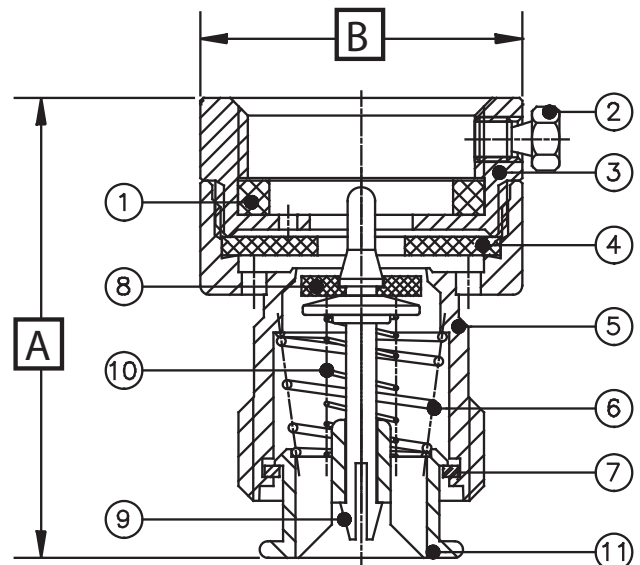


MATERIAL SPECIFICATION

PART	MATERIAL	SPECIFICATION
1 Inlet connection gasket	NBR (Nitrile) rubber	Commercial grade, SN-919F
2 Setscrew	Forged brass	ASTM B16 UNS C36000
3 Inlet body segment	Forged brass	ASTM B16 UNS C36000
4 Inlet seat gasket	NBR (Nitrile) rubber	Commercial grade, SN-919F
5 Outlet body segment	Forged brass	ASTM B16 UNS C36000
6 Piston leader spring	Stainless steel	AISI Grade 304
7 Piston leader retainer	Acetal copolymer resin	Commercial grade, POM M90
8 Piston seat	NBR (Nitrile) rubber	Commercial grade, SN-919F
9 Piston	Acetal copolymer resin	Commercial grade, POM M90
10 Piston spring	Stainless steel	AISI Grade 304
11 Piston leader	Acetal copolymer resin	Commercial grade, POM M90

DIMENSIONS

Size	A	B
3/4" FGHT x MGHT	1.97	1.38



**Pictured
Model T-557
FGHT x MGHT
Cut-away**