

## SUBMITTAL SHEET

JOB NAME	ITEM TAG
JOB LOCATION	PART NUMBER
CONTRACTOR	DATE
ENGINEER APPROVAL	DATE

## MULTI-TURN ANTI-SIPHON FREEZE-RESISTANT SILLCOCK

### TM-550 and TM-550P

Patented, rubber-coated handwheel is easy to operate with wet or gloved hands. The UV stabilized rubber coating resists sunlight cracking and weathering.

Oversized, angled mounting flange with screw slots covers enlarged, over-drilled sill holes, facilitates the correct downward drainage pitch and mounts more easily and securely than smaller flanges with notches.

Lockshield packing nut extends beyond the end of the stem, permitting handle removal, which prevents unauthorized operation.

All body segments are chrome-plated, providing better corrosion-resistance over competitor's un-plated versions.

Available in nominal sizes (inlet connection): 1/2" MNPT / 1/2" Sweat, 3/4" MNPT / 1/2" FNPT and 1/2" PEX.

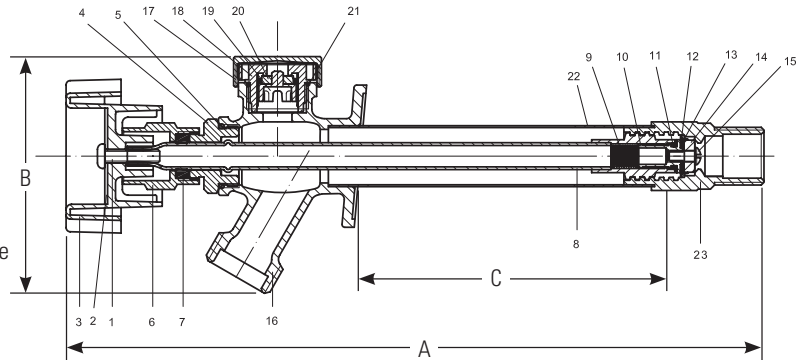
#### Working Pressure, Non Shock (PSI)

Cold working pressure (CWP): 125 PSI  
Saturated steam (WSP): Not Suitable for Steam Service

- A.S.S.E 1019 Certified
- End connections comply with the following specifications:
  - ANSI / ASME B1.20.1 (MNPT and FNPT)
  - ANSI / ASME B16.18 (CTS solder)
  - ASTM F1807 (PEX barb)
  - ANSI / ASME B1.20.7 (male garden hose outlet)



**Pictured  
TM-550**



#### MATERIAL SPECIFICATION

PART	MATERIAL	SPECIFICATION
1 Handle screw	Forged brass	UNS Alloy C26000
2 Identification disc	Aluminum	Commercial grade
3 Handwheel	Aluminum & TPR rubber	Commercial grade
4 Bonnet nut	Forged brass, chrome-plated	UNS Alloy C36000
5 Bonnet nut O-ring	NBR (Nitrile) rubber	Commercial grade
6 Packing nut	Forged brass	UNS Alloy C36000
7 Stem packing	NBR (Nitrile) rubber	Commercial grade
8 Stem	Forged brass	UNS Alloy C27000
9 Piston check spring	Stainless steel	AISI Grade 304
10 Piston check	Forged brass	UNS Alloy C36000
11 Piston check O-ring	EPDM rubber	Commercial grade
12 Piston check diaphragm	EPDM rubber	Commercial grade
13 Seat washer cup	Forged brass	UNS Alloy C26000
14 Seat washer	EPDM rubber	Commercial grade
15 Seat washer screw	Forged brass	UNS Alloy C26000
16 Body (exterior)	Brass, chrome plated	UNS Alloy C85700
17 Vacuum breaker cap	Forged brass, chrome-plated	UNS Alloy C36000
18 Vacuum breaker body	POM acetal resin	COPOLYMER 090
19 Vacuum breaker piston	POM acetal resin	COPOLYMER 090
20 Vacuum breaker seat washer	NBR (Nitrile) rubber	Commercial grade
21 Vacuum breaker O-ring	NBR (Nitrile) rubber	Commercial grade
22 Body tube (interior)	Forged brass, chrome-plated	UNS Alloy C27000
23 End adapter (interior)	Forged brass, chrome-plated	UNS Alloy C36000



**Pictured  
TM-550  
Cutaway view**

#### DIMENSIONS

	A (open)	B	C
Size			Nominal length
4"	9.88	3.40	4.00
6"	11.88	3.40	6.00
8"	13.88	3.40	8.00
10"	15.88	3.40	10.00
12"	17.88	3.40	12.00
14"	19.88	3.40	14.00

## SUBMITTAL SHEET

JOB NAME	ITEM TAG
JOB LOCATION	PART NUMBER
CONTRACTOR	DATE
ENGINEER APPROVAL	DATE

## LEAD-FREE MULTI-TURN ANTI-SIPHON FREEZE-RESISTANT SILLCOCK

### TM-550NL and TM-550PNL

Lead-free design is suitable for all no-lead potable water installations, in full compliance of all lead-free plumbing laws.

Patented, rubber-coated handwheel is easy to operate with wet or gloved hands. The UV stabilized rubber coating resists sunlight cracking and weathering.

Oversized, angled mounting flange with screw slots covers enlarged, over-drilled sill holes, facilitates the correct downward drainage pitch and mounts more easily and securely than smaller flanges with notches.

Lockshield packing nut extends beyond the end of the stem, permitting handle removal, which prevents unauthorized operation.

All body segments are chrome-plated, providing better corrosion-resistance over competitor's un-plated versions.

Available in nominal sizes (inlet connection): 3/4" MNPT / 1/2" FNPT, 1/2" FNPT / 1/2" sweat and 1/2" PEX.

#### Working Pressure, Non Shock (PSI)

Cold working pressure (CWP): 125 p.s.i.

Saturated steam (WSP): Not Suitable for Steam Service

- Third-party tested and certified in compliance with U.S. Federal Public Law 111-380 (National lead-free plumbing law).
- A.S.S.E 1019 Certified
- End connections comply with the following specifications:

ANSI / ASME B1.20.1 (MNPT and FNPT)

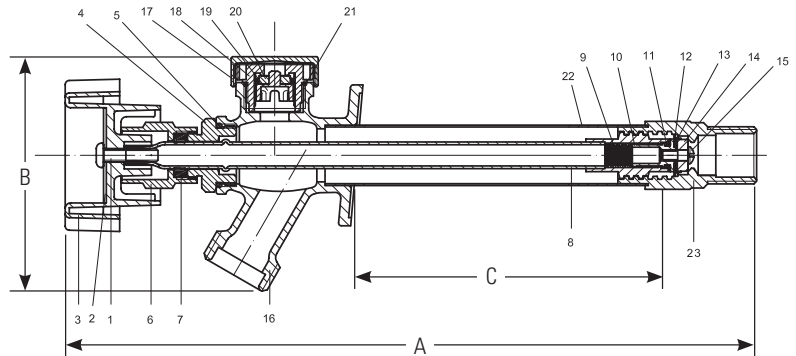
ANSI / ASME B16.18 (CTS solder)

ASTM F1807 (PEX barb)

ANSI / ASME B1.20.7 (male garden hose outlet)



**Pictured  
TM-550NL**



**Pictured  
TM-550NL  
Cutaway view**

#### MATERIAL SPECIFICATION

PART	MATERIAL	SPECIFICATION
1 Handle screw	Lead-free forged brass	UNS Alloy C26000
2 Identification disc	Aluminum	Commercial grade
3 Handwheel	Aluminum & TPR rubber	Commercial grade
4 Bonnet nut	Lead-free forged brass, chrome-plated	UNS Alloy C46400
5 Bonnet nut O-ring	NBR (Nitrile) rubber	Commercial grade
6 Packing nut	Forged brass	UNS Alloy C36000
7 Stem packing	NBR (Nitrile) rubber	Commercial grade
8 Stem	Lead-free forged brass	UNS Alloy C27000
9 Piston check spring	Stainless steel	AISI Grade 304
10 Piston check	Lead-free forged brass	UNS Alloy C46400
11 Piston check O-ring	EPDM rubber	Commercial grade
12 Piston check diaphragm	EPDM rubber	Commercial grade
13 Seat washer cup	Lead-free forged brass	UNS Alloy C26000
14 Seat washer	EPDM rubber	Commercial grade
15 Seat washer screw	Lead-free forged brass	UNS Alloy C26000
16 Body (exterior)	Lead-free brass, chrome plated	UNS Alloy C6802
17 Vacuum breaker cap	Forged brass, chrome-plated	UNS Alloy C36000
18 Vacuum breaker body	POM acetal resin	COPOLYMER 090
19 Vacuum breaker piston	POM acetal resin	COPOLYMER 090
20 Vacuum breaker seat washer	NBR (Nitrile) rubber	Commercial grade
21 Vacuum breaker O-ring	NBR (Nitrile) rubber	Commercial grade
22 Body tube (interior)	Lead-free forged brass, chrome-plated	UNS Alloy C27000
23 End adapter (interior)	Lead-free forged brass, chrome-plated	UNS Alloy C46400



#### DIMENSIONS

	A (open)	B	C
Size			Nominal length
4"	9.88	3.40	4.00
6"	11.88	3.40	6.00
8"	13.88	3.40	8.00
10"	15.88	3.40	10.00
12"	17.88	3.40	12.00
14"	19.88	3.40	14.00