

Vivez l'expérience

**MAAX®**

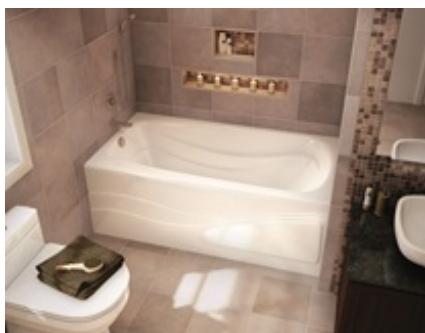
Enjoy the experience

## MAAX SUBMITTAL SPECIFICATIONS

# Tenderness 6636

**MODEL NUMBER 102203**

DIMENSIONS: 66" x 36" x 20" Acrylic



### STANDARD FEATURES

- Rectangular shape bathtub
- Alcove installation
- Armrest and textured floor
- End drain
- Integrated tiling flange
- Integrated skirt with access panel when equipped with system




### OPTIONS

- Water heater assembly (factory installed)
- Two 6-in. grab bars
- Metal trim kit for whirlpool and combined systems
- Flexible main hose 9 ft for air push control
- Metal trim kit for Air Push Control
- One chromatherapy light

### UNIQUE FEATURES

- None

### SYSTEMS

-  MAAX Professional Whirlpool
-  Aeroeffect **DOOR**
-  Combined Whirlpool/Aeroeffect

### SELECTION

Combine with MAAX's complete shower door offering visit [www.maax.com](http://www.maax.com)

### CERTIFICATIONS

Maax products adhere to one or more of the following certifications:



Project : .....  
Contractor : .....  
MAAX Representative : ..... Tel : .....  
Date : .....

[www.maax.com](http://www.maax.com)

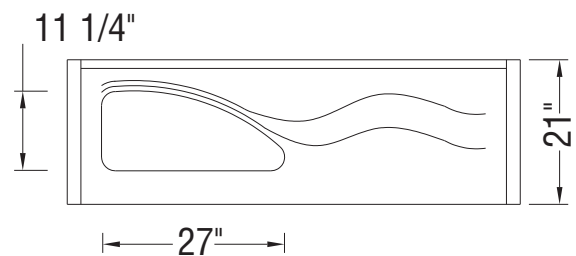
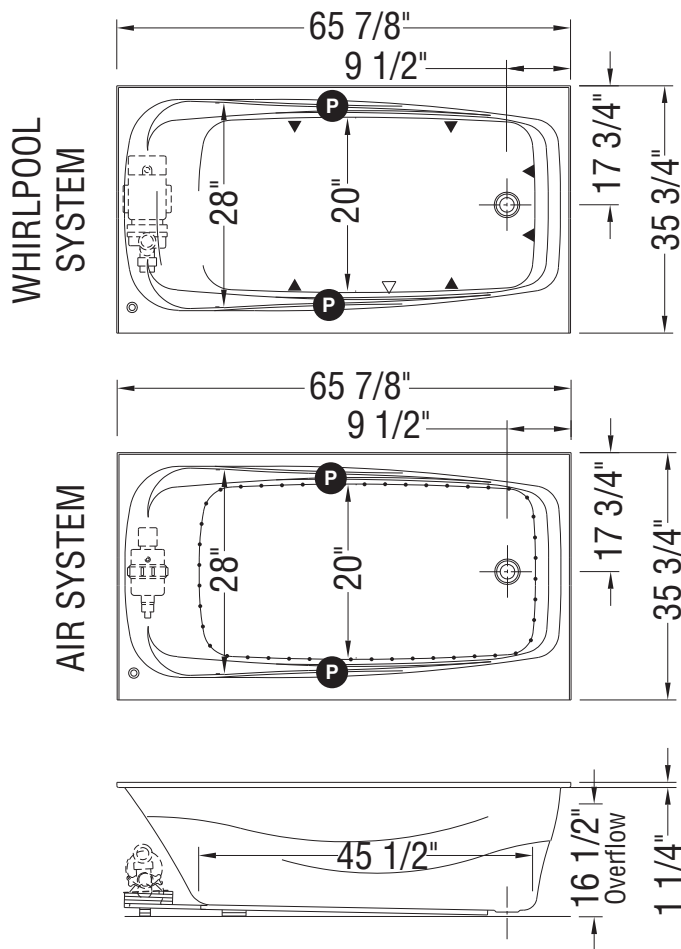
2017-11-09

## MAAX SUBMITTAL SPECIFICATIONS

# Tenderness 6636

MODEL NUMBER 102203

## TECHNICAL DRAWINGS



- P** : Indicates optional grab bar positioning
- ( **▲** ) : Indicates Whirlpool jets positioning
- ( **•** ) : Indicates airjets positioning
- ( **△** ) : Indicates suction positioning

**All dimensions are approximate. Structure measurements must be verified against the unit to ensure proper fit.**