

MAAX SUBMITTAL SPECIFICATIONS

Exhibit 6032 IFS AFR

MODEL NUMBER 105512

DIMENSIONS: 60" x 32" x 20" Acrylic



Project :
Contractor :
MAAX Representative : Tel :
Date :

www.maax.com

Vivez l'expérience
MAAX[®]
Enjoy the experience

STANDARD FEATURES

- Rectangular shape bathtub in alcove installation
- Available in Above-the-Floor Rough (AFR) or not
- Minimalist look with discreet armrests and textured floor
- Deck for faucet installation
- Integrated skirt with access panel when equipped with a system

OPTIONS

- Removable access panel
- One chromatherapy light
- Water heater assembly (factory installed)
- Metal trim kit for whirlpool and combined systems
- Metal trim kit for Air Push Control
- Cable-operated waste and overflow

UNIQUE FEATURES

- Tiling Flange
- Above-the-Floor Rough (AFR)

SYSTEMS

- MAAX Professional Whirlpool
- Aeroeffect **DOOR**
- Combined Whirlpool/Aeroeffect
- Chromatherapy **SELECTION**

Combine with MAAX's complete shower door offering visit

www.maax.com

CERTIFICATIONS

Maax products adhere to one or more of the following certifications:



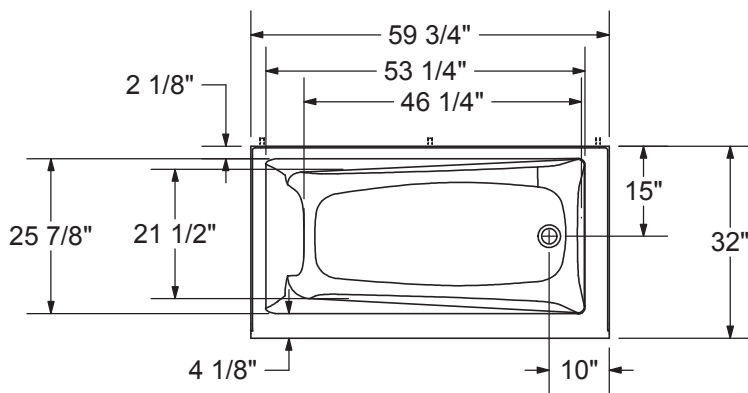
2017-11-09

MAAX SUBMITTAL SPECIFICATIONS

Exhibit 6032 IFS AFR

MODEL NUMBER 105512

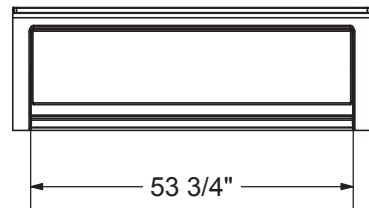
TECHNICAL DRAWINGS



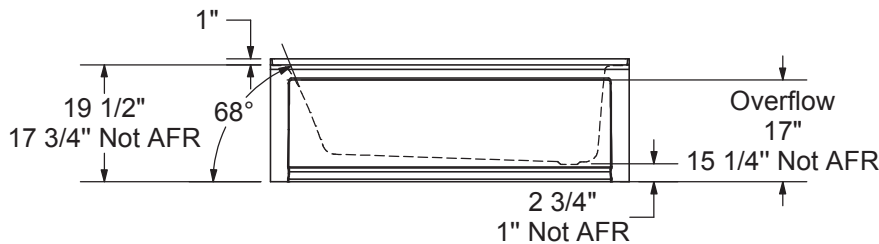
WITHOUT SYSTEM



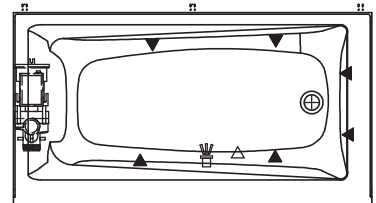
WITH SYSTEM



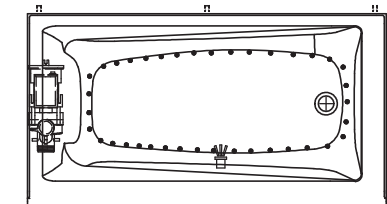
1" Single Integrated tiling
 flange (shown)



WHIRLPOOL SYSTEM



AIR SYSTEM



Wood support design may vary.
 Single Integrated tiling flange: 1" height x 1/4" thickness (shown)

All dimensions are approximate.
 Structure measurement must be verified against the unit to ensure proper fit.

- (▲) : Indicates whirlpool jets positioning
- (△) : Indicates suction positioning
- (●) : Indicates airjets positioning
- (☼) : Indicates chromatherapy light positioning