

# MAAX SUBMITTAL SPECIFICATIONS

## Exhibit 6042 IF

**MODEL NUMBER 106174**

DIMENSIONS: 60" x 42" x 19" Acrylic



Project : .....  
Contractor : .....  
MAAX Representative : ..... Tel : .....  
Date : .....

**www.maax.com**

Vivez l'expérience  
**MAAX®**  
Enjoy the experience

### STANDARD FEATURES

- Rectangular shape bathtub
- Drop-in or alcove installation with tiling flange
- Minimalist look with discreet armrests and textured floor
- End drain

### OPTIONS

- One chromotherapy light
- Water heater assembly (factory installed)
- Metal trim kit for whirlpool and combined systems
- Metal trim kit for Air Push Control
- Cable-operated waste and overflow
- Foam pillow with 2 suction pads

### UNIQUE FEATURES

- Tiling Flange

### SYSTEMS

- MAAX Professional Whirlpool
- Aeroeffect **DOOR**
- Combined Whirlpool/Aeroeffect
- Chromotherapy **SELECTION**

Combine with MAAX's complete shower door offering visit [www.maax.com](http://www.maax.com)

### CERTIFICATIONS

Maax products adhere to one or more of the following certifications:



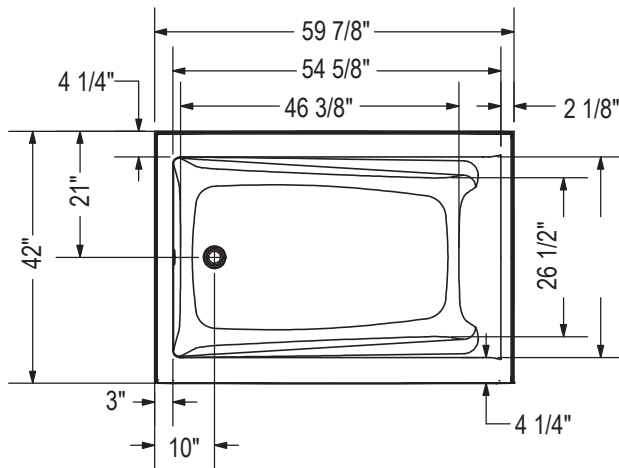
2017-11-09

## MAAX SUBMITTAL SPECIFICATIONS

# Exhibit 6042 IF

MODEL NUMBER 106174

## TECHNICAL DRAWINGS



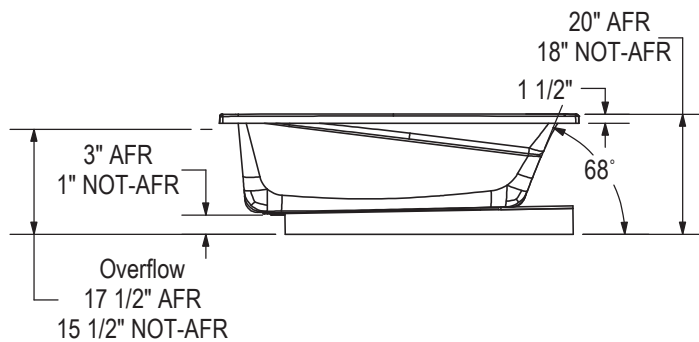
IFS Without System  
Single tiling flange



IFS With System  
(access panel)  
Single tiling flange



1" Single integrated tiling  
flange (not shown)  
Drop-in model (Shown)

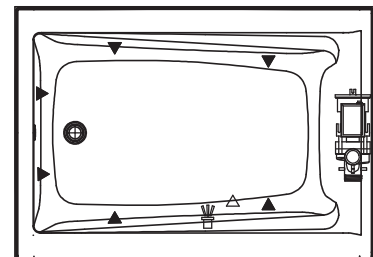


Technical drawing is universal for all  
Exhibit 6042 configurations.

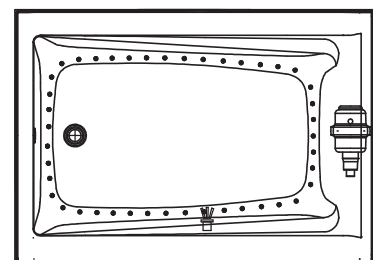
Wood support design may vary.  
Single Integrated tiling flange: 1" height x 1/4" thickness (not shown)

All dimensions are approximate.  
Structure measurement must be verified against the unit to ensure proper fit.

WHIRLPOOL SYSTEM



AIR SYSTEM



- ( ▲ ) : Indicates whirlpool jets positioning
- ( △ ) : Indicates suction positioning
- ( ● ) : Indicates airjets positioning
- ( ☐ ) : Indicates chromatherapy light positioning